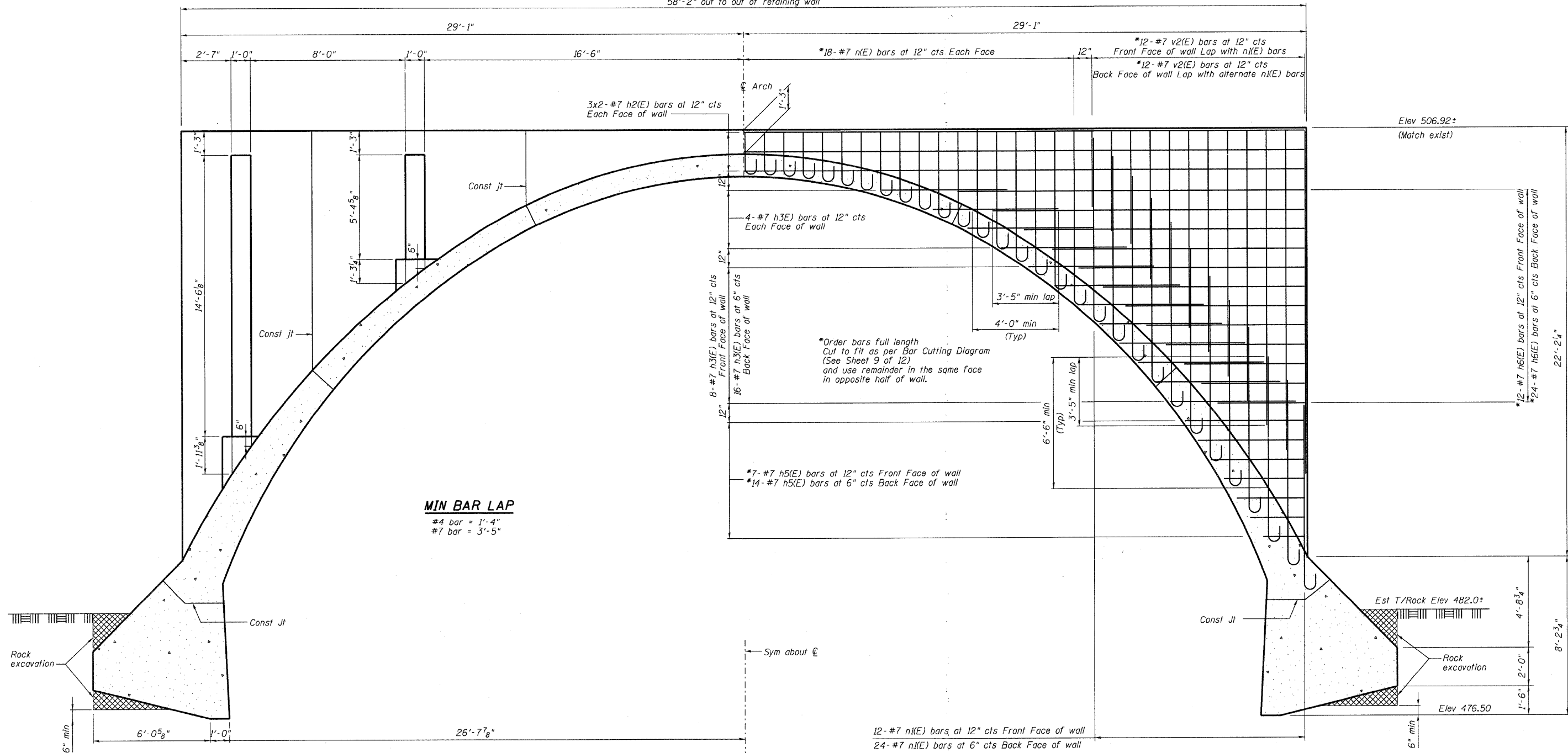


STATE OF ILLINOIS
DEPARTMENT OF TRANSPORTATION

58'-2" out to out of retaining wall



HALF SECTION LOOKING WEST

SECTION B-B

HALF SECTION LOOKING WEST

Showing reinforcement in retaining wall
(Vertical joints not shown for clarity)

CONCRETE ARCH DETAILS
FAP ROUTE 310 (US 67)
OVER LITTLE PIASA CREEK
SECTION 60-16-1-1B
MADISON COUNTY
STATION 229+95.92
STRUCTURE NUMBER 060-0061

DESIGNED -	BWP
CHECKED -	CWC
DRAWN -	R KING
CHECKED -	CWC

HOMER L. CHASTAIN & ASSOCIATES, LLP
CONSULTING ENGINEERS
DECATUR (217) 422-8544
CHICAGO (773) 714-0050
ROCKFORD (815) 489-0050
184-001397

SHEET NO. 7 OF 12 SHEETS	F.A.P. RTE.	SECTION	COUNTY	TOTAL SHEETS	SHEET NO.
	310	60-16-1-1B	MADISON	481	171
FAP ROUTE 310 (US 67)			CONTRACT NO. 76318		
FED. ROAD DIST. NO.		ILLINOIS FED. AID PROJECT			