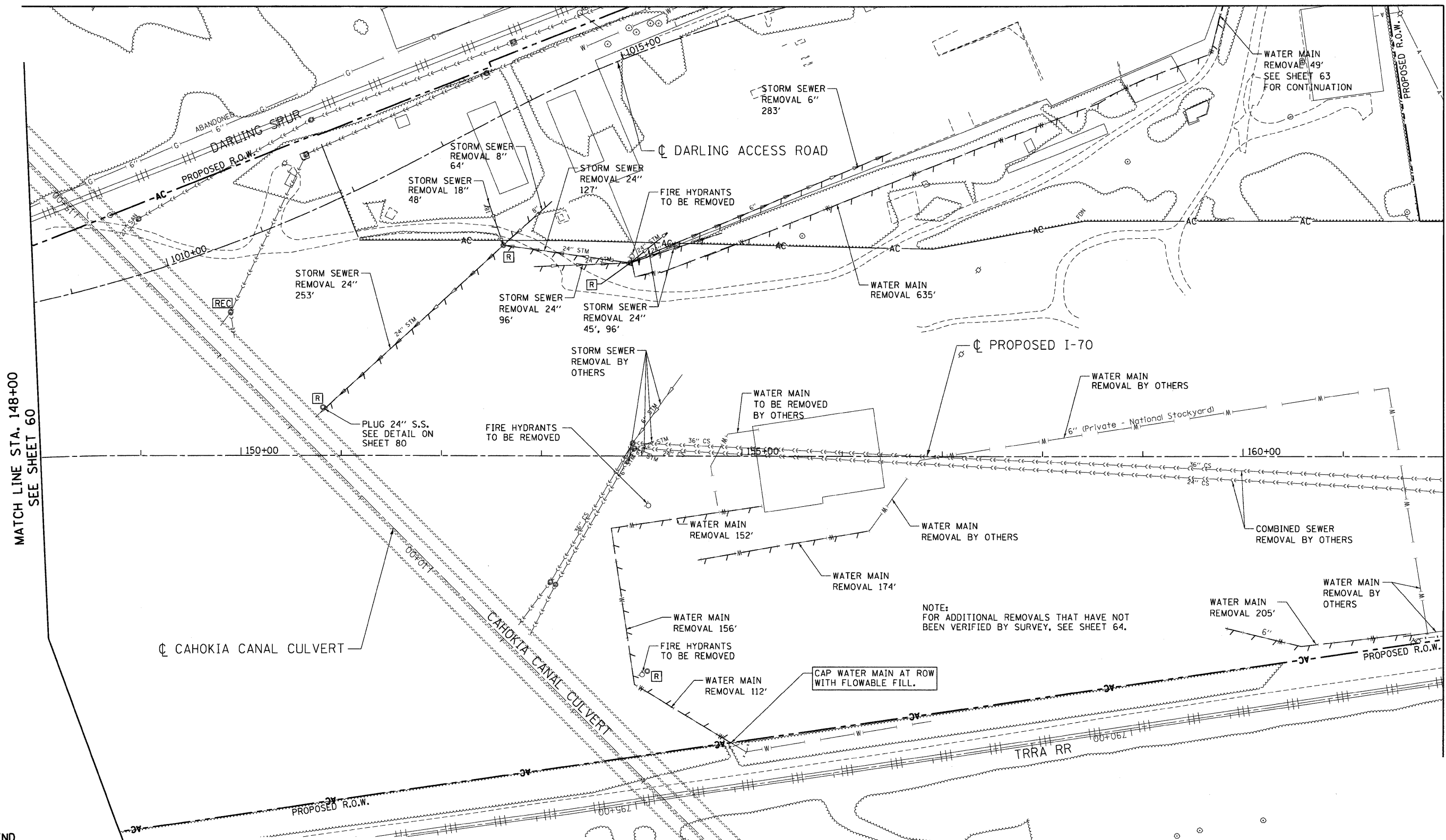
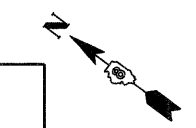


MATCH LINE "A"  
SEE SHEET 63



MATCH LINE STA. 148+00  
SEE SHEET 60

MATCH LINE STA. 162+00  
SEE SHEET 62

**LEGEND**

	EX. INLET		EX. COMBINED SEWER
	EX. CATCH BASIN		PIPE REMOVAL
	EX. MANHOLE		STRUCTURE TO BE REMOVED
	EX. STORM SEWER		MANHOLE STRUCTURE TO BE RECONSTRUCTED
	EX. SANITARY SEWER		
	EX. FIRE HYDRANT		

NOTE:  
FOR ADDITIONAL REMOVALS THAT HAVE NOT  
BEEN VERIFIED BY SURVEY, SEE SHEET 64.

FILE NAME = #FILE#	USER NAME = #USER#	DESIGNED - JB	REVISED -	<p align="center"><b>STATE OF ILLINOIS DEPARTMENT OF TRANSPORTATION</b></p> <p align="center">I-70 CONNECTION</p>	<p align="center"><b>PROPOSED I-70 EXISTING DRAINAGE &amp; UTILITIES</b></p> <p align="center">STA. 148 + 00 TO STA. 162 + 00</p>	F.A.P. RTE. 998	SECTION 82-2-1HVB	COUNTY ST. CLAIR	TOTAL SHEETS 285	SHEET NO. 61		
TENG & ASSOCIATES, INC. ENGINEERS/ARCHITECTS/PLANNERS CHICAGO, ILLINOIS	PLOT SCALE = #SCALE#	CHECKED - ACL	REVISED -			SCALE: 1"=50'	SHEET NO. OF SHEETS STA. TO STA.	FED. ROAD DIST. NO. [ILLINOIS] FED. AID PROJECT				
	PLOT DATE = #DATE#	DATE - 06/04/10	REVISED -									

\\\FS-2024\A\VAL\LD\TRANS\07\2282\20868-02\1\CIVIL\CD\99 ALL CONTRACTS\CD\99 SHEETS CONTRACT 05\JBC\05-SHT-DRAW\11-14860.DGN  
 \\\FS-2024\A\VAL\LD\TRANS\07\2282\20868-02\1\CIVIL\CD\99 ALL CONTRACTS\CD\99 SHEETS CONTRACT 05\JBC\05-SHT-DRAW\11-14860.DGN  
 \\\FS-2024\A\VAL\LD\TRANS\07\2282\20868-02\1\CIVIL\CD\99 ALL CONTRACTS\CD\99 SHEETS CONTRACT 05\JBC\05-SHT-DRAW\11-14860.DGN