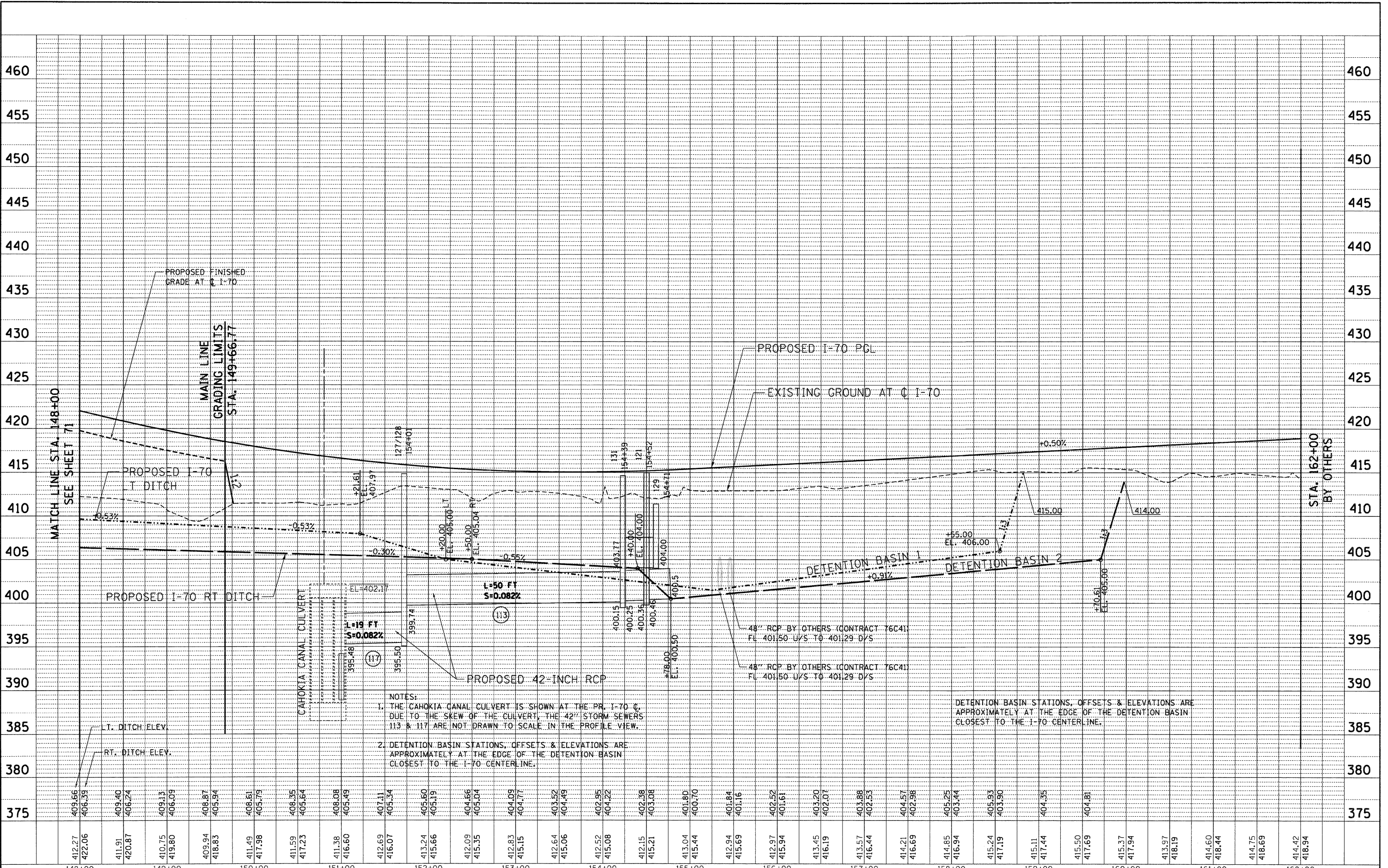


PLAN	SURVEYED	BY	DATE
	PLOTTED		
	CHECKED		
	ALIGNED		
	FILED		
	NO.		

PROFILE	SURVEYED	BY	DATE
	PLOTTED		
	CHECKED		
	GRADES		
	STRUCTURE		
	NO.		

6-23-2018, 14:54:41  
 BRN01010  
 C:\P\2014\PROJECTS\CONTRACT SHEETS\CONTRACT 65\DECENN-95-SHT-PROF2-16800.DGN



- NOTES:
1. THE CAHOKIA CANAL CULVERT IS SHOWN AT THE PR. I-70 C. DUE TO THE SKEW OF THE CULVERT, THE 42" STORM SEWERS 113 & 117 ARE NOT DRAWN TO SCALE IN THE PROFILE VIEW.
  2. DETENTION BASIN STATIONS, OFFSETS & ELEVATIONS ARE APPROXIMATELY AT THE EDGE OF THE DETENTION BASIN CLOSEST TO THE I-70 CENTERLINE.

DETENTION BASIN STATIONS, OFFSETS & ELEVATIONS ARE APPROXIMATELY AT THE EDGE OF THE DETENTION BASIN CLOSEST TO THE I-70 CENTERLINE.

FILE NAME =	USER NAME = #USER#	DESIGNED - JB	REVISED -	<b>STATE OF ILLINOIS</b> <b>DEPARTMENT OF TRANSPORTATION</b> I-70 CONNECTION SCALE: HORIZ. 1"=50' VERT. 1"=5' STA. TO STA.	<b>PROPOSED I-70</b> <b>DRAINAGE PROFILE</b> <b>STA. 148+00 TO STA. 162+00</b>	F.A.P. RTE. 998	SECTION 82-2-IHV8	COUNTY ST. CLAIR	TOTAL SHEETS 285	SHEET NO. 72	
#FILE#	PLOT SCALE = #SCALE#	DRAWN - JB	REVISED -			CONTRACT NO. 76C44		ILLINOIS FED. AID PROJECT			
	PLOT DATE = #DATE#	CHECKED - ACL	REVISED -								
		DATE - 06/04/10	REVISED -								

**TENG**  
 TENG & ASSOCIATES, INC.  
 ENGINEERS/ARCHITECTS/PLANNERS  
 CHICAGO, ILLINOIS