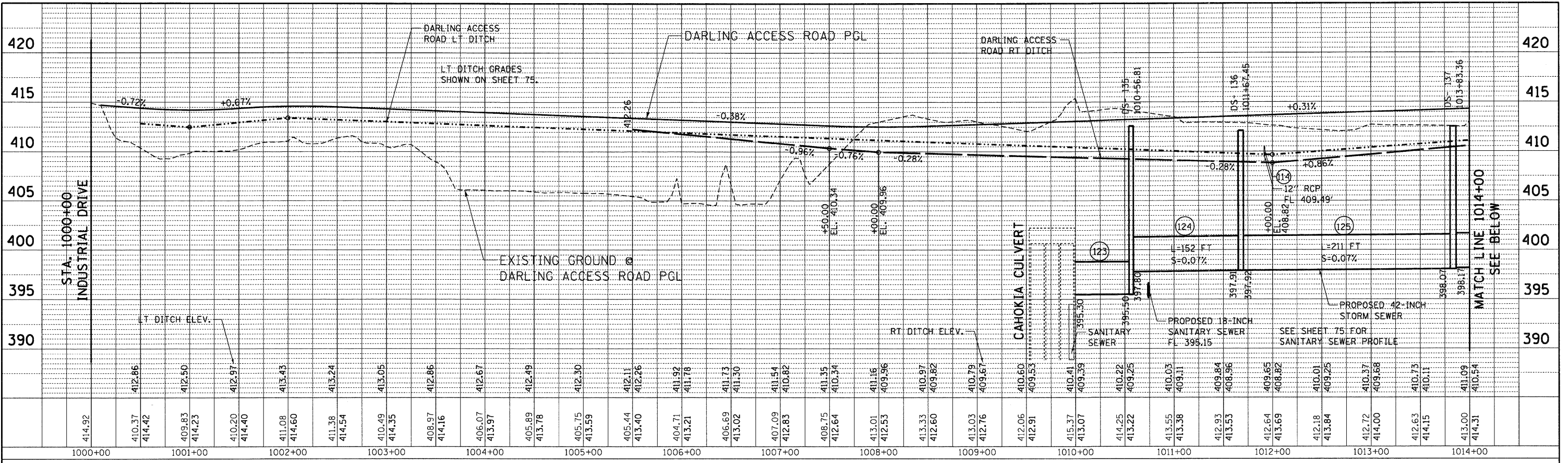
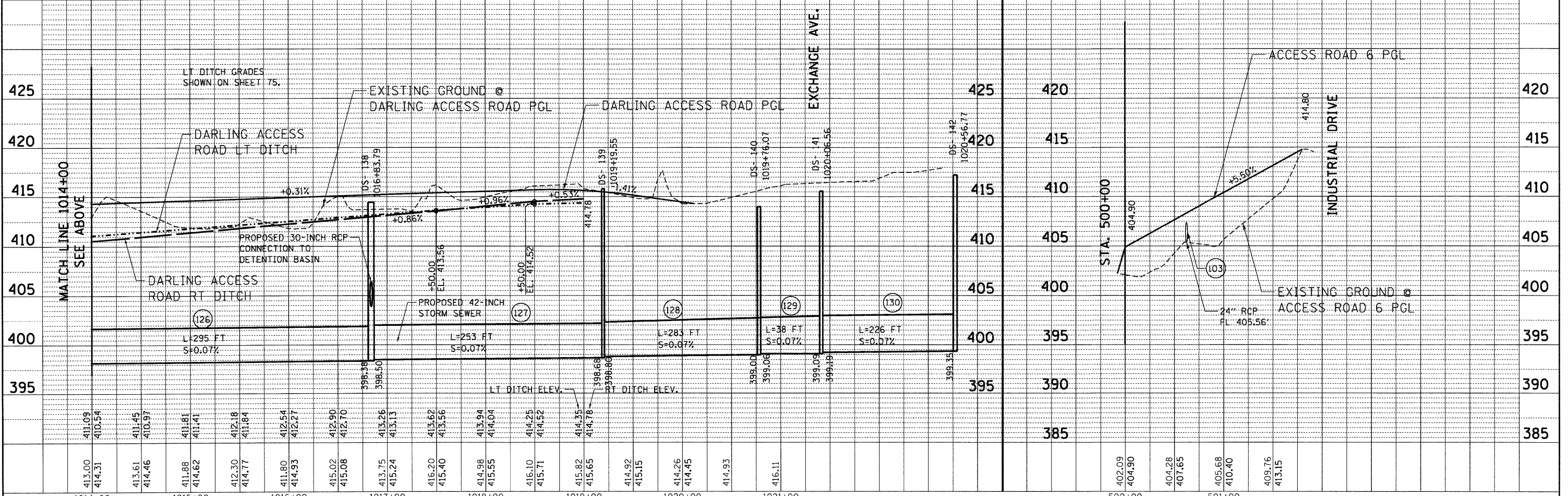


PLAN	SURVEYED	BY	DATE
	PLOTTED		
	GRADES CHECKED		
	ALIGNED		
	STRUCTURE NOTATIONS CHKO		
	NO.		
	NO.		
	NO.		



PROFILE	SURVEYED	BY	DATE
	PLOTTED		
	GRADES CHECKED		
	ALIGNED		
	STRUCTURE NOTATIONS CHKO		
	NO.		
	NO.		
	NO.		



FILE NAME =	USER NAME = #USER#	DESIGNED - JB	REVISED -	STATE OF ILLINOIS DEPARTMENT OF TRANSPORTATION I-70 CONNECTION				PROPOSED DARLING ACCESS ROAD & RR ACCESS ROAD 6 DRAINAGE PROFILE				F.A.P. RTE. 998	SECTION 82-R-1HVB	COUNTY ST. CLAIR	TOTAL SHEETS 285	SHEET NO. 74	
#FILE#		DRAWN - JB	REVISED -					STA. 1000+00 TO STA. 1021+50 & STA. 500+00 TO STA. 501+80				SCALE: HORIZ. 1"=50'	VERT. 1"=5'	STA. TO STA.	FED. ROAD DIST. NO.	ILLINOIS FED. AID PROJECT	CONTRACT NO. 76C44
		CHECKED - ACL	REVISED -														
		DATE - 06/04/10	REVISED -														

6-23-2010, 14:05:17
 BONDHILL
 N:\51604\WV\I.D. TRANS.07\2822\2866-88\1\CIVIL\CADD\98 ALL CONTRACTS\CONNSHEETS\CONTRACT 05\DRCONV\05 SUT-PROF2-5000.DGN

