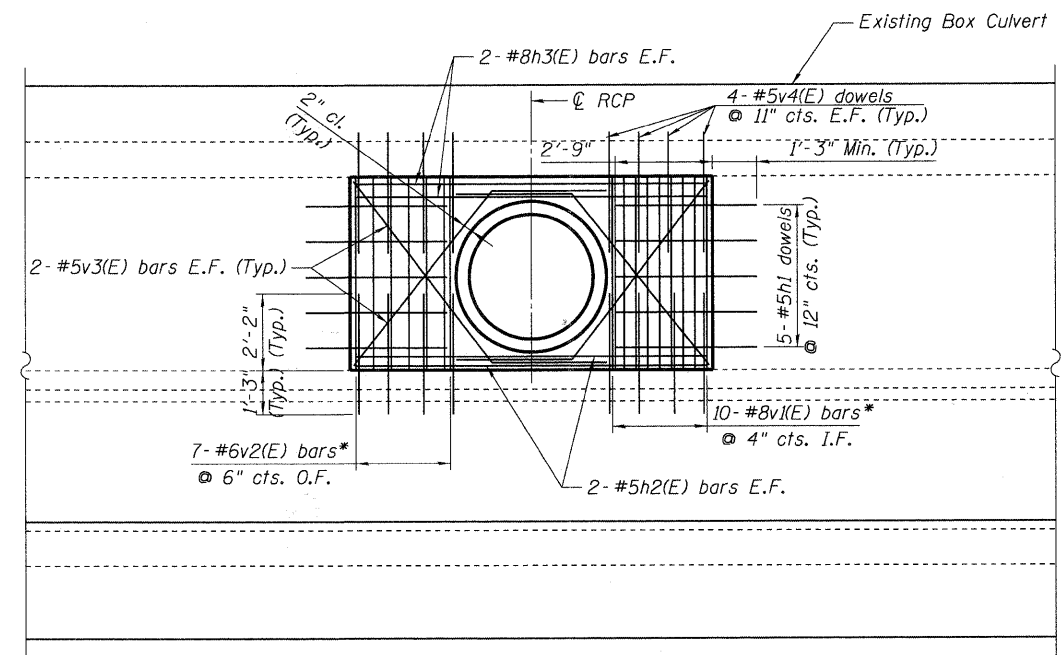


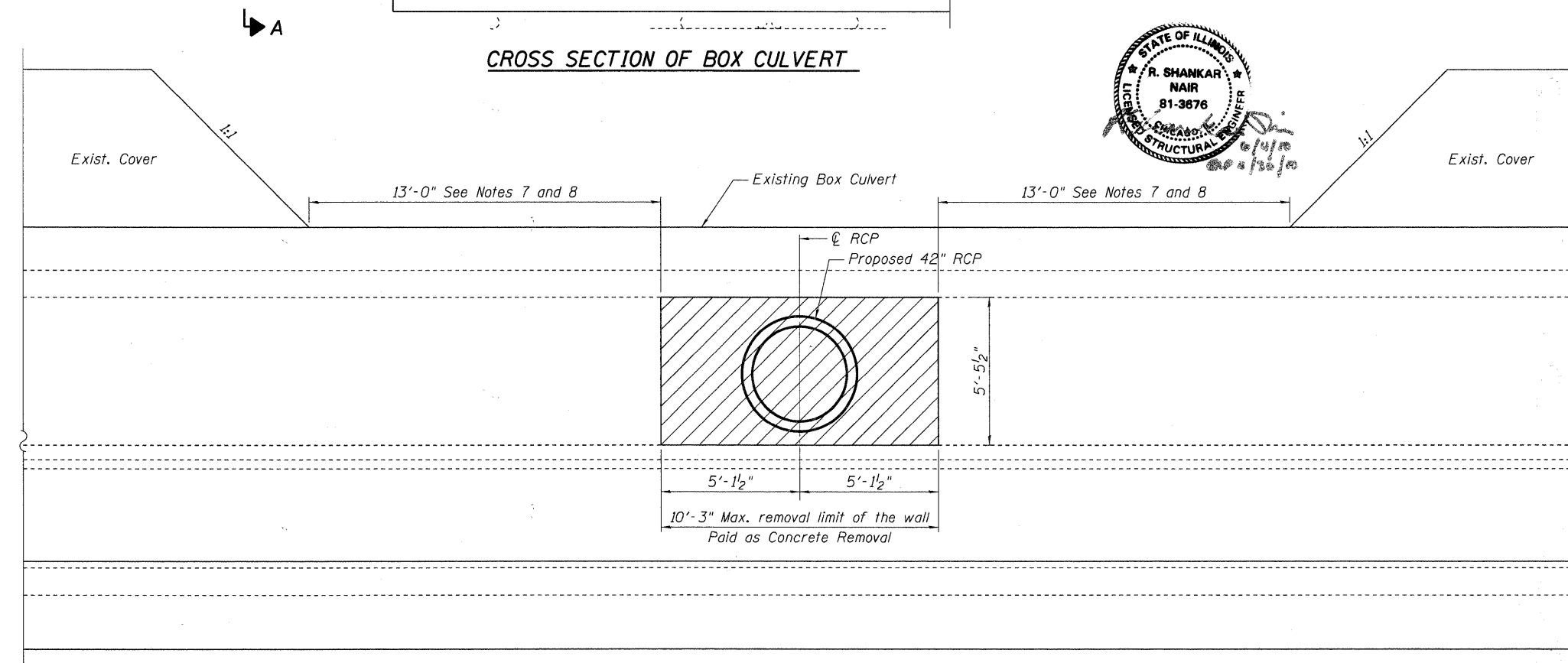
	Location 1	Location 2
I-70 Station	149+95	153+75
Offset	120' Left	263' Right
Invert Elevation	395.30	395.48
Elevation "A"	394.42	394.60

CROSS SECTION OF BOX CULVERT

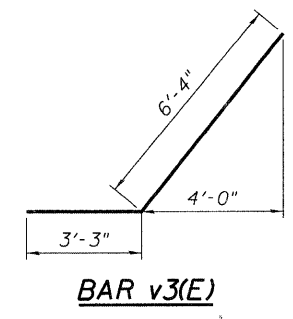
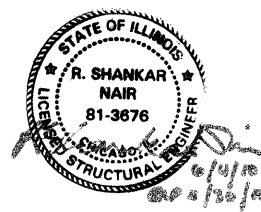


VIEW A-A - REINFORCEMENT DETAILS

* Bundle two bars together, adjacent to the RCP on each face of the wall.



VIEW A-A - REMOVAL LIMITS



BAR v3(E)

BAR LIST

At each location

Bar	No.	Size	Length	Shape
h1(E)	20	#5	4'-0"	—
h2(E)	4	#5	9'-11"	—
h3(E)	4	#8	9'-11"	—
v1(E)	20	#8	5'-2"	—
v2(E)	14	#6	5'-2"	—
v3(E)	8	#5	9'-7"	✓
v4(E)	32	#5	3'-5"	—

BILL OF MATERIAL

At each location

Item	Unit	Total
Concrete Removal	Cu. Yd.	2.6
Reinforcement Bars, Epoxy Coated	Pound	810
Concrete Structures	Cu. Yd.	1.9

NOTES:

1. Reinforcement bars shall conform to the requirements of ASTM A 706 Gr 60. See Special Provisions.
2. Existing reinforcement shall be cleaned and incorporated into the new construction. Cost included with Concrete Removal.
3. I.F., O.F. and E.F. indicates inside face, outside face and each face respectively.
4. Drill and epoxy grout bars in drilled holes according to section 584 of the IDOT Standard Specifications. Method and grout are subject to the approval of the engineer. The cost of drilling and grouting shall be included with Reinforcement Bars, Epoxy Coated.
5. Reinforcement bars designated (E) shall be epoxy coated.
6. Plan dimensions and details relative to existing plans are subject to nominal construction variations. The Contractor shall field verify existing dimensions and details affecting new construction and make necessary approved adjustments prior to construction or ordering of materials. Such variations shall not be cause for additional compensation for a change in scope of the work, however, the Contractor will be paid for the quantity actually furnished at the unit price bid for the work.
7. Excavation to the limits shown is included in the cost of Concrete Removal.
8. Following the construction work, the excavation shall be backfilled in accordance with Sections 205.05 and 205.06 of the Standard Specifications. Cost included with Concrete Structures.

STATE OF ILLINOIS
DEPARTMENT OF TRANSPORTATION

BOX CULVERT PIPE INLET

FILE NAME =
\$FILEL\$
TENG & ASSOCIATES, INC.
ENGINEERS/ARCHITECTS/PLANNERS
CHICAGO, ILLINOIS

USER NAME = \$USER\$
DESIGNED - KK
DRAWN - KK
CHECKED - TCU
DATE - 06/04/10

REVISED -
REVISED -
REVISED -
REVISED -

REVISIONS

SCALE: SHEET NO. OF STA. 134+22.00 TO STA.

F.A.P. RTE. 998 SECTION 82-2-1HVB COUNTY ST. CLAIR TOTAL SHEETS 285 SHEET NO. 78
SN 082-0318 (EB) & 0319 (WB) CONTRACT NO. 76C44
FED. ROAD DIST. NO. [ILLINOIS] FED. AID PROJECT

FILE NAME = \$FILEL\$

.\\0822018-CONN-95-001-BCDDN...0822018-CONN-99-001-BCDDN
 BONDHJJD \\\FS-904\VA\VAL\J.D-FRANS.87.2282-28968-901\STRUCT\CAD\B1 DESIGN\0822018\SHEET\0822018-CONN-95-001-SHT-BCDDN