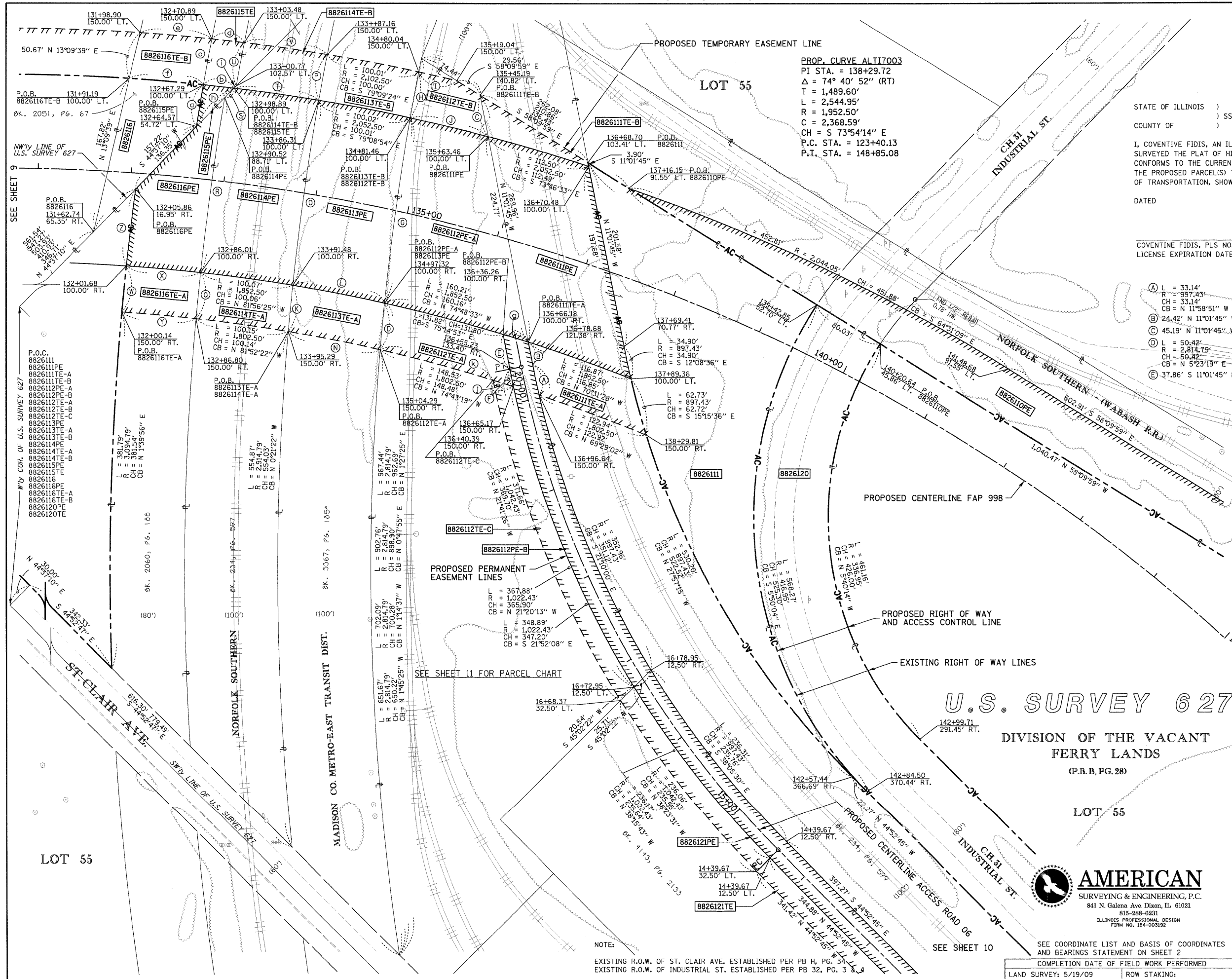


PART OF U.S. SURVEY 627, SECTION 1, T2N, R10W, OF THE 3RD PM, ST. CLAIR COUNTY, ILLINOIS



PROP. CURVE ALTI7003  
 PI STA. = 138+29.72  
 $\Delta = 74^\circ 40' 52''$  (RT)  
 L = 1,489.60'  
 T = 2,544.95'  
 R = 1,952.50'  
 C = 2,368.59'  
 CH = S 73°54'14" E  
 P.C. STA. = 123+40.13  
 P.T. STA. = 148+85.08



STATE OF ILLINOIS )  
 ) SS  
 COUNTY OF )

I, COVENTINE FIDIS, AN ILLINOIS PROFESSIONAL LAND SURVEYOR, STATE THAT I HAVE SURVEYED THE PLAT OF HIGHWAY SHOWN HEREON AND THAT THIS PROFESSIONAL SERVICE CONFORMS TO THE CURRENT ILLINOIS MINIMUM STANDARDS FOR A BOUNDARY SURVEY FOR THE PROPOSED PARCEL(S) TO BE ACQUIRED BY THE STATE OF ILLINOIS, DEPARTMENT OF TRANSPORTATION, SHOWN HEREON.

DATED \_\_\_\_\_  
 COVENTINE FIDIS, PLS NO. 35-2159  
 LICENSE EXPIRATION DATE: 11/30/2010



- (A) L = 33.14'  
R = 997.43'  
CH = 33.14'  
CB = N 11°58'51" W
- (B) 24.42' N 11°01'45" W
- (C) 45.19' N 11°01'45" W
- (D) L = 50.42'  
R = 2,814.79'  
CH = 50.42'  
CB = N 5°23'19" E
- (E) 37.86' S 11°01'45" E
- (F) L = 18.99'  
R = 1,022.43'  
CH = 18.99'  
CB = S 11°33'40" E
- (G) L = 200.67'  
R = 2,814.79'  
CH = 200.63'  
CB = N 7°56'39" E
- (H) L = 50.02'  
R = 2,814.79'  
CH = 50.02'  
CB = N 5°33'45" E
- (I) L = 42.00'  
R = 1,852.50'  
CH = 42.00'  
CB = N 77°13'18" E
- (J) L = 86.20'  
R = 2,052.50'  
CH = 86.20'  
CB = N 76°32'57" W
- (K) L = 50.13'  
R = 2,914.79'  
CH = 50.13'  
CB = N 5°35'25" E
- (L) L = 100.42'  
R = 1,852.50'  
CH = 100.41'  
CB = N 78°50'23" W
- (M) L = 100.63'  
R = 1,802.50'  
CH = 100.61'  
CB = N 78°40'54" W
- (N) L = 200.11'  
R = 2,914.79'  
CH = 200.07'  
CB = N 8°02'58" E
- (O) L = 50.01'  
R = 2,914.79'  
CH = 50.01'  
CB = N 10°30'28" E
- (P) L = 50.01'  
R = 2,914.79'  
CH = 50.01'  
CB = N 10°30'28" E
- (Q) L = 50.01'  
R = 3,014.79'  
CH = 77.51'  
CB = N 8°40'24" E
- (R) L = 188.80'  
R = 3,014.79'  
CH = 188.76'  
CB = N 7°56'33" E
- (S) 14.30' N 44°37'10" W
- (T) L = 91.90'  
R = 2,052.50'  
CH = 91.89'  
CB = S 81°49'38" E
- (U) L = 3.25' S 44°37'10" W
- (V) L = 22.88'  
R = 1,802.50'  
CH = 22.88'  
CB = S 72°43'30" E
- (W) L = 125.65'  
R = 1,802.50'  
CH = 125.62'  
CB = S 75°05'08" E
- (X) L = 80.02'  
R = 1,852.50'  
CH = 80.01'  
CB = N 84°43'30" W
- (Y) L = 80.01'  
R = 1,802.50'  
CH = 80.00'  
CB = N 84°44'09" W
- (Z) L = 83.15'  
R = 3,094.79'  
CH = 83.15'  
CB = N 6°53'44" E
- (AA) L = 45.37'  
R = 3,039.79'  
CH = 45.37'  
CB = N 9°29'38" E
- (AB) L = 33.22'  
R = 2,052.50'  
CH = 33.22'  
CB = S 83°34'25" E
- (AC) L = 35.10'  
R = 3,039.79'  
CH = 35.10'  
CB = N 10°23'38" E
- (AD) L = 77.51'  
R = 2,102.50'  
CH = 77.51'  
CB = N 8°45'59'16" E
- (AE) L = 79.99'  
R = 2,052.50'  
CH = 79.99'  
CB = N 85°09'13" W
- (AF) L = 28.38'  
R = 1,852.50'  
CH = 28.38'  
CB = S 72°46'14" E
- (AG) L = 57.65' S 44°37'10" W
- (AH) L = 22.88'  
R = 1,802.50'  
CH = 22.88'  
CB = S 72°43'30" E
- (AI) L = 125.65'  
R = 1,802.50'  
CH = 125.62'  
CB = S 75°05'08" E

U.S. SURVEY 627  
 DIVISION OF THE VACANT  
 FERRY LANDS  
 (P.B.B, PG. 28)

LOT 55

**AMERICAN**  
 SURVEYING & ENGINEERING, P.C.  
 841 N. Galena Ave. Dixon, IL 61021  
 815-288-8231  
 ILLINOIS PROFESSIONAL DESIGN  
 FIRM NO. 184-003192

ILLINOIS DEPARTMENT OF TRANSPORTATION PLAT OF HIGHWAYS				
FAP ROUTE 998 SECTION 82-2-1HVB ST. CLAIR COUNTY JOB NO. R-98-026-08				
STATION 131+00 TO STATION 145+00				
SCALE: 1" = 50'				
SHEET 10 OF				
ILLINOIS DEPARTMENT OF TRANSPORTATION DIVISION OF HIGHWAYS/REGION 5/DISTRICT 8 1102 EASTPORT PLAZA DRIVE COLLINGSVILLE, ILLINOIS 62234-6198				
F.A. RTE.	SECTION	COUNTY	TOTAL SHEETS	SHEET NO.
			285	95
CONTRACT NO. 76C44				
FED. ROAD DIST. NO. ILLINOIS FED. AID PROJECT				