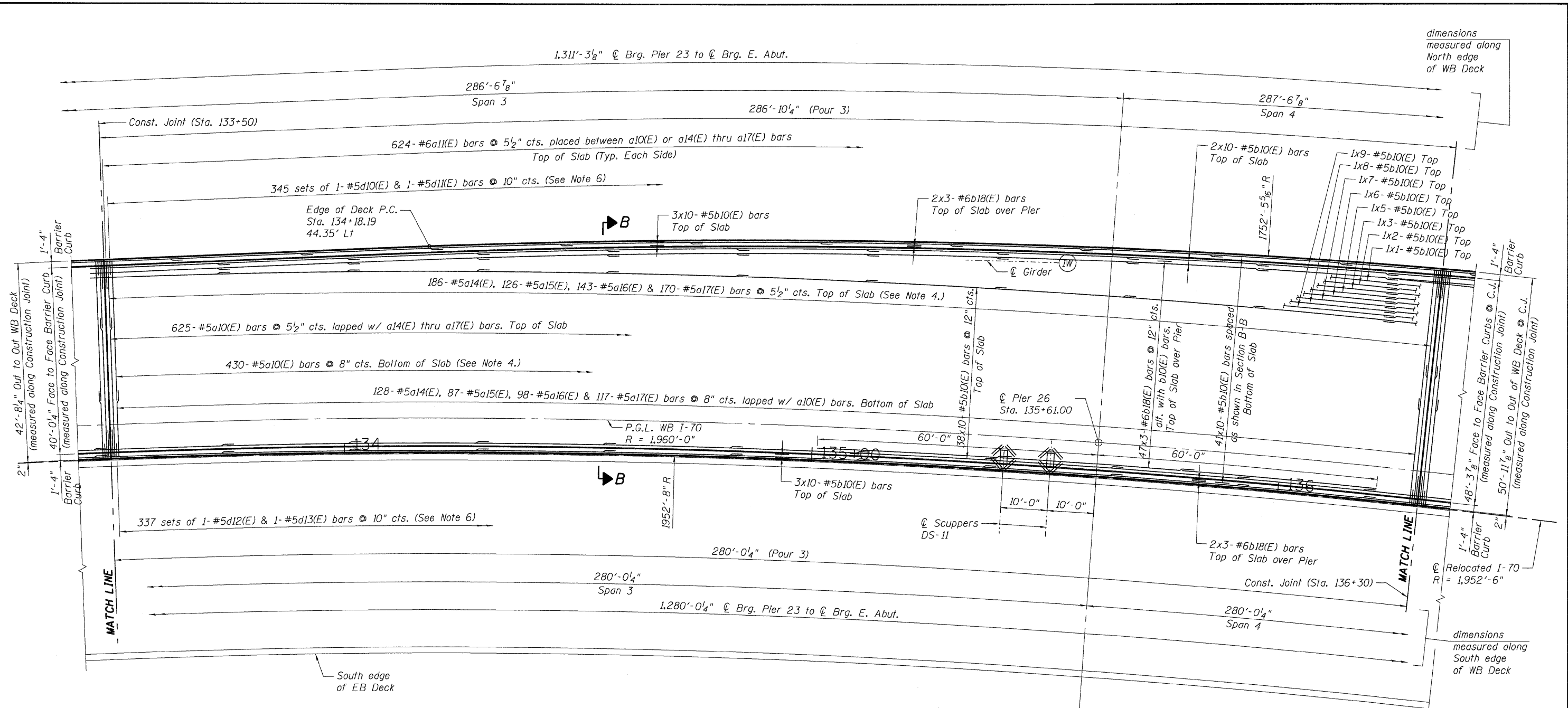


0820318-CONN-05-001-SULDON... 0820318-CONN-05-002-SULDON... 0820318-CONN-05-003-SHT-SULDON...
 6-03-2010, 10:42:09
 BONDHUJO \\FS-084\AM VALL\JD-TRANS.97\2202.20866-001\STRUCT\CAD\01 DESIGN\0820318\SHEET 0820318-CONN-05-003-SHT-SULDON



DECK PLAN - WB I-70 POUR 3



NOTE:
See Sht. S-29 for notes.

FILE NAME =	USER NAME = #USER#	DESIGNED - JLR	REVISED -	STATE OF ILLINOIS DEPARTMENT OF TRANSPORTATION I-70 CONNECTION OVER NS, TRRA, MCT AND INDUSTRIAL DR.	DECK PLAN WB I-70 3 OF 5		F.A.P. RTE.	SECTION	COUNTY	TOTAL SHEETS	SHEET NO.
#FILE#	PLOT SCALE = #SCALE#	DRAWN - FD	REVISED -				998	82-2-IHVB	ST. CLAIR	285	141
TENG & ASSOCIATES, INC. ENGINEERS/ARCHITECTS/PLANNERS CHICAGO, ILLINOIS	PLOT DATE = #DATE#	CHECKED - TCU	REVISED -		SCALE:	SHEET NO. S-31 OF S-111	STA. 134+22.00 TO STA.	SN 082-0318 (EB) & 0319 (WB) CONTRACT NO. 76C44		FED. ROAD DIST. NO. ILLINOIS FED. AID PROJECT	
		DATE - 06/04/10	REVISED -								