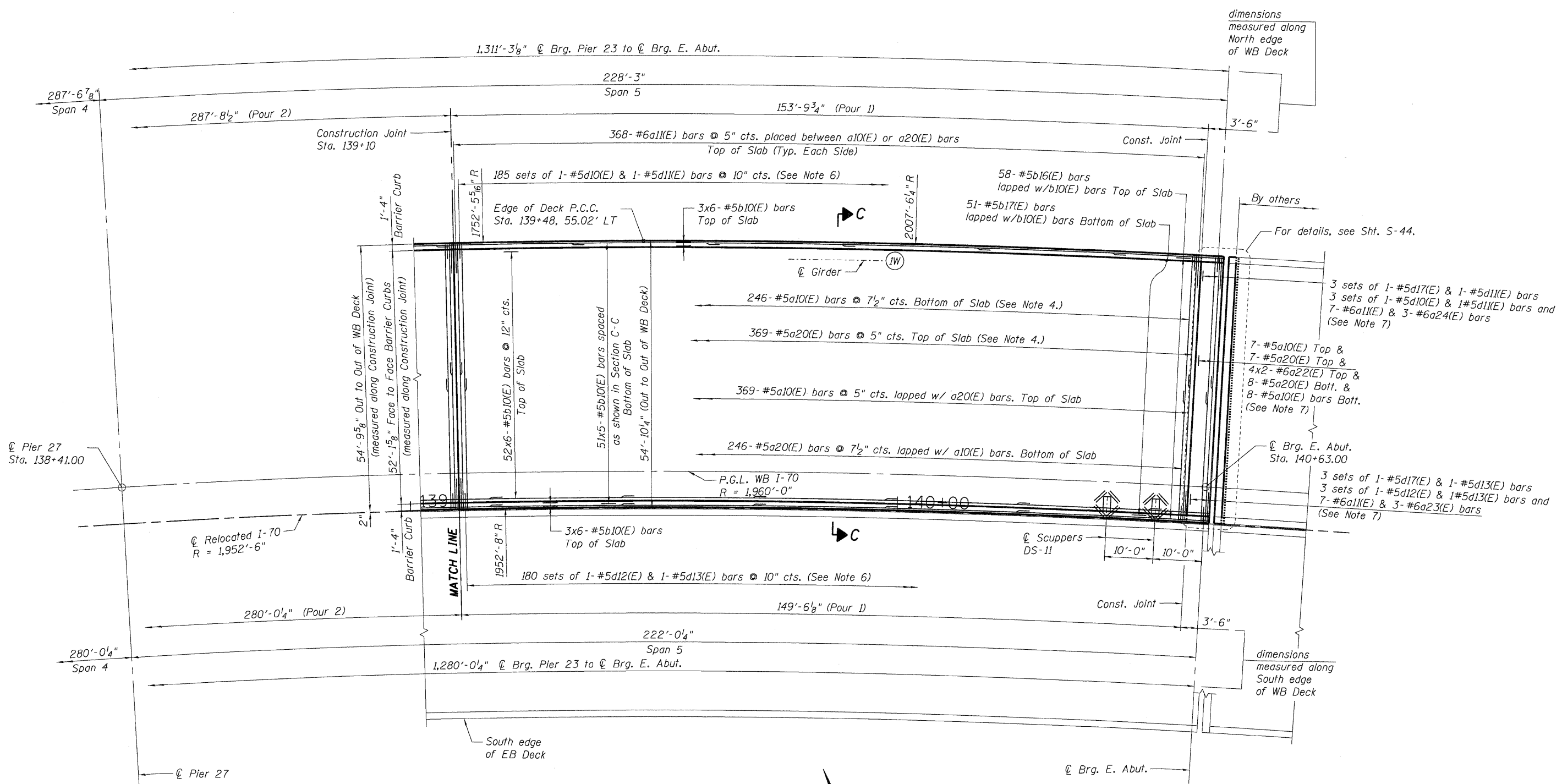


\\0820318-CONN-95-001-SUDDN...0820318-CONN-95-002-SUDDN...0820318-ALIGNMENT\3DCN...0820318-CONN-95-010-SHT-SUDDN
 BONDHJJD \VFS\0044\AMV\ALLT.D-TRANS_07\2202\208668-001\STRUCT\CAD\01_DESIGN\0820318-CONN-05-005-SHT-SUDDN



DECK PLAN - WB I-70 POUR 1

NOTE:
See Sht. S-29 for notes.

FILE NAME =	USER NAME = #USER#	DESIGNED - JLR	REVISED -	STATE OF ILLINOIS DEPARTMENT OF TRANSPORTATION		DECK PLAN WB I-70 5 OF 5		F.A.P. RTE.	SECTION	COUNTY	TOTAL SHEETS	SHEET NO.
#FILE#	PLOT SCALE = #SCALE#	DRAWN - FD	REVISED -					998	82-2-1HVB	ST. CLAIR	285	143
TENG TENG & ASSOCIATES, INC. ENGINEERS/ARCHITECTS/PLANNERS CHICAGO, ILLINOIS	PLOT DATE = #DATE#	CHECKED - TCU	REVISED -	I-70 CONNECTION OVER NS, TRRA, MCT AND INDUSTRIAL DR.		SCALE:	SHEET NO. S-33 OF S-111	STA. 134+22.00 TO STA.	SN 082-0318 (EB) & 0319 (WB)	CONTRACT NO. 76C44		
								FED. ROAD DIST. NO.	ILLINOIS FED. AID PROJECT			