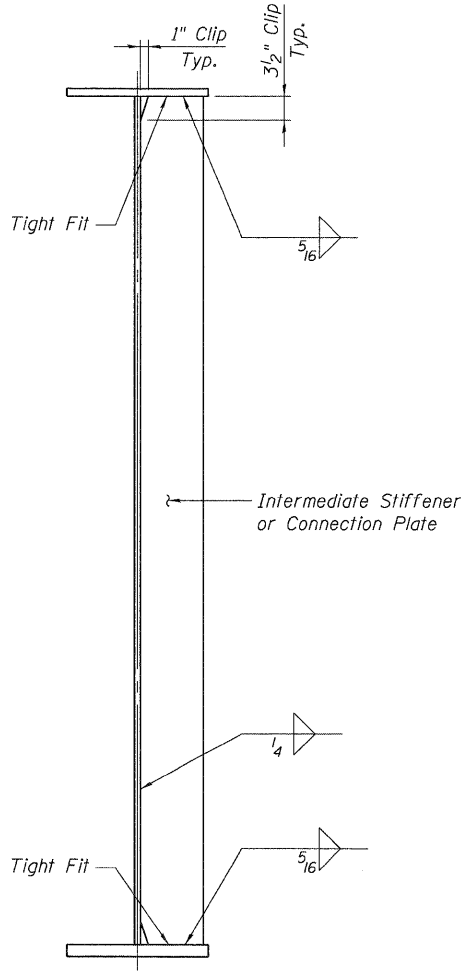
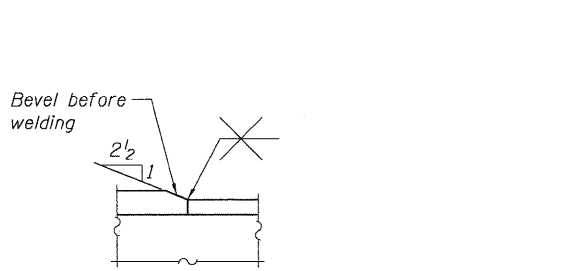


BEARING STIFFENER DETAIL AT PIERS 24 THRU 27

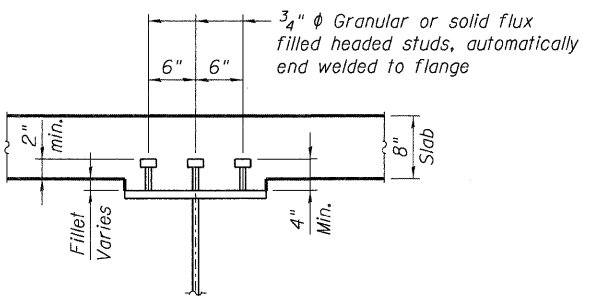
BEARING STIFFENER DETAIL AT EAST ABUTMENT AND PIER 23



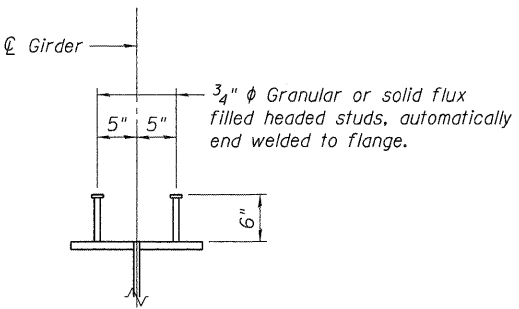
INTERMEDIATE STIFFENER AND CONNECTION @ DETAIL



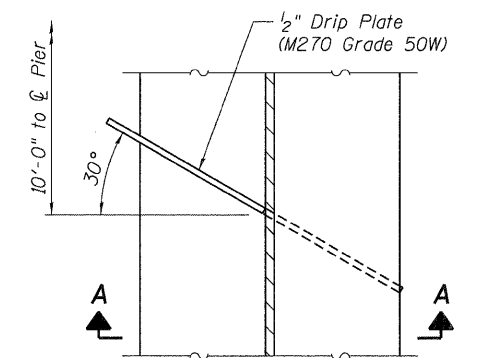
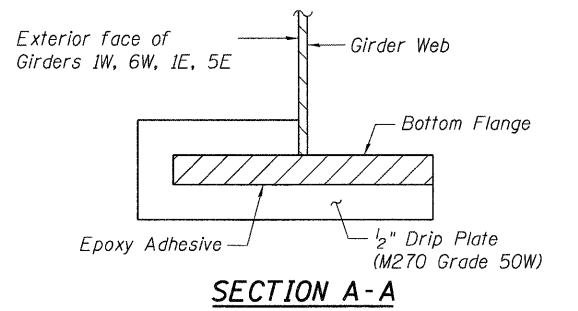
DETAIL 1



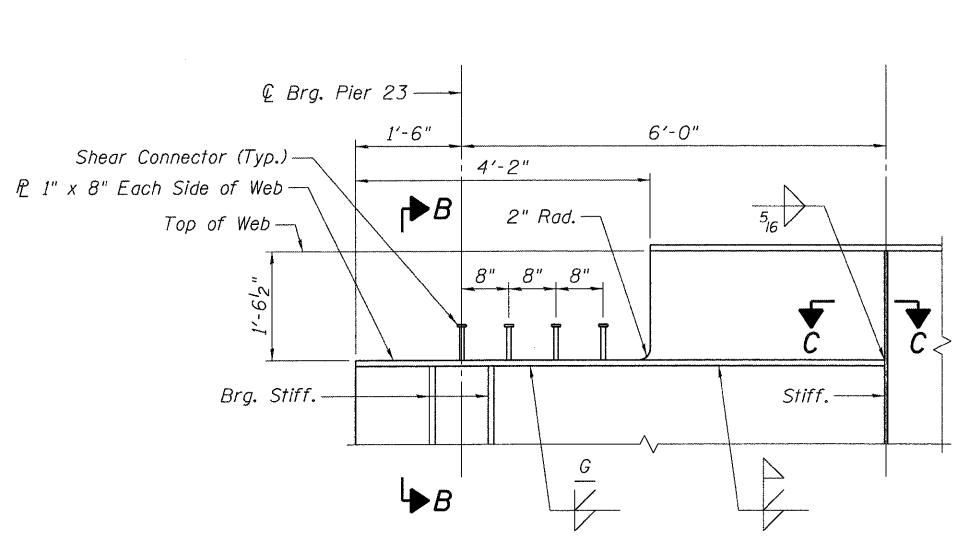
SHEAR STUD CONNECTOR



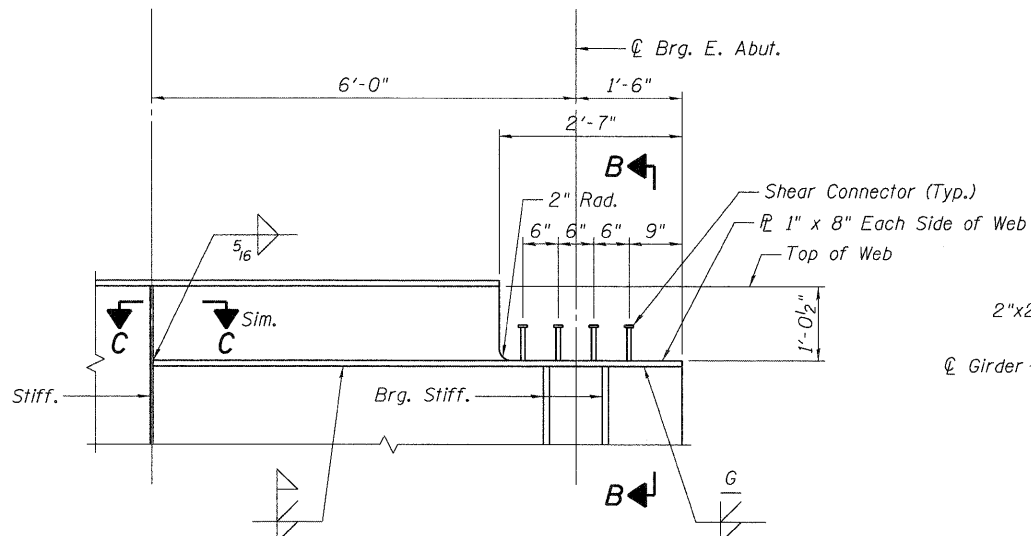
SECTION B-B



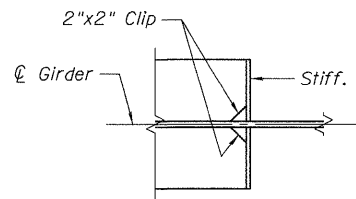
PLAN - DRIP PLATE



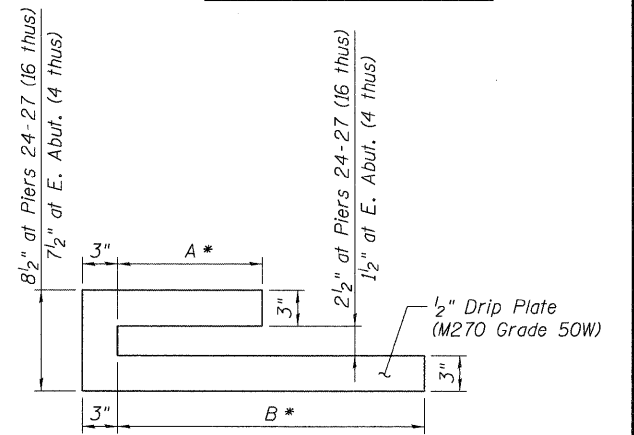
DETAIL 2



DETAIL 3



SECTION C-C



PLAN - DRIP PLATE

* Adjust A and B to fit girder bottom flange.

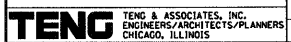
20 thus, cost included with Furnishing and Erecting Structural Steel

Drip Plate Note:
Drip plates shall be installed on suitably prepared surfaces after shop priming, using a two component epoxy suitable for structural steel under prolonged exposure. Plates shall be painted with the paint specified for structural steel.

NOTE:
See Sht. S-67 for notes.

FILE NAME = #FILE#		USER NAME = #USER#		DESIGNED - JLR	REVISED -	STATE OF ILLINOIS DEPARTMENT OF TRANSPORTATION I-70 CONNECTION OVER NS, TRRA, MCT AND INDUSTRIAL DR.			STEEL DETAILS 5 OF 6			F.A.P. RTE.	SECTION	COUNTY	TOTAL SHEETS	SHEET NO.
PLOT SCALE = #SCALE#		PLOT DATE = #DATE#		DRAWN - MDB	REVISED -							998	82-2-1HBV	ST. CLAIR	285	181
CHECKED - TCU		DATE - 06/04/10		REVISI	REVISED -							SN 082-0318 (EB) & 0319 (WB)		CONTRACT NO. 76C44		
DATE				REVISI	REVISED -							FED. ROAD DIST. NO.		ILLINOIS FED. AID PROJECT		

\\F5-0244\MM\VALT\1D-TRANS_07\2202_2006-081\STRUCT\CAD\01_DESIGN\0820318\SHEET_0820318-05-005-SHT-GD.DGN
 \\F5-0244\MM\VALT\1D-TRANS_07\2202_2006-081\STRUCT\CAD\01_DESIGN\0820318\SHEET_0820318-05-001-GD.DGN
 \\F5-0244\MM\VALT\1D-TRANS_07\2202_2006-081\STRUCT\CAD\01_DESIGN\0820318\SHEET_0820318-05-001-SHT-GD.DGN
 \\F5-0244\MM\VALT\1D-TRANS_07\2202_2006-081\STRUCT\CAD\01_DESIGN\0820318\SHEET_0820318-05-001-GD.DGN



TENGE & ASSOCIATES, INC.
ENGINEERS/ARCHITECTS/PLANNERS
CHICAGO, ILLINOIS