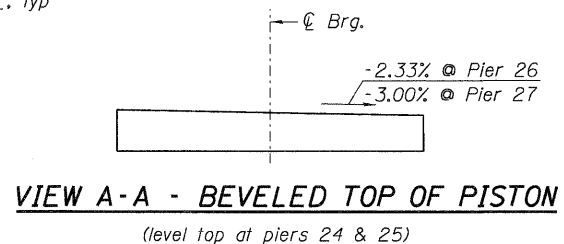


**FIXED POT BEARING**  
(Piers 24 - 27)

\*\*  $1\frac{1}{4}$ "  $\phi$  x 15" Anchor bolts  
 $2\frac{3}{4}$ " x  $2\frac{3}{4}$ " x  $\frac{5}{16}$ " PL Washer under nut.  
 $1\frac{3}{4}$ "  $\phi$  holes in bottom bearing PL, typ



**DIMENSIONS (IN)**

Dimension	Piers 24 & 25	Pier 26	Pier 27
D	$23\frac{7}{8}$	$23\frac{7}{8}$	24
Tb	$2\frac{3}{4}$	$2\frac{3}{4}$	$2\frac{3}{4}$
Th	$11\frac{3}{4}$	12	$12\frac{3}{16}$
a	$6\frac{1}{2}$	$6\frac{1}{2}$	$6\frac{1}{2}$
b	9	9	9
c	$15\frac{1}{2}$	$15\frac{1}{2}$	$15\frac{1}{2}$
d	17	17	17

**DESIGN DATA**

Data	Pier 24	Pier 25	Pier 26	Pier 27
Service Vertical Design Load (kips)	825	835	900	945
Factored Horizontal Design Load (kips)	270	240	280	240
Factored Design Rotation (rad)	0.02	0.02	0.02	0.02

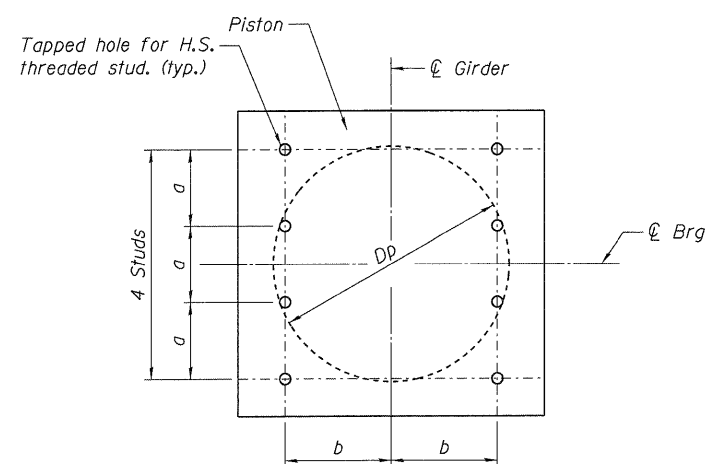
**BILL OF MATERIAL**

Item	Unit	Total
High Load Multi-Rotation Bearings, Fixed - 900K	Each	33
* High Load Multi-Rotation Bearings, Fixed - 1000K	Each	11
Anchor Bolts, $1\frac{1}{4}$ " $\phi$	Each	264

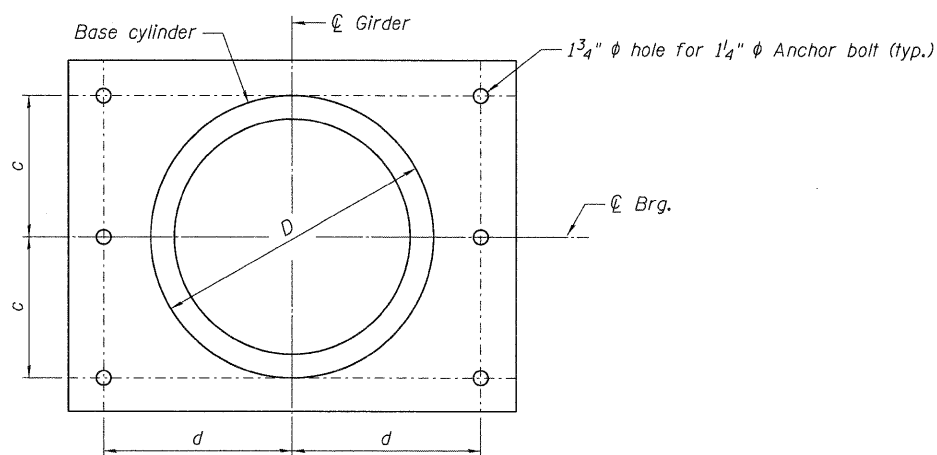
\* High Load Multi-Rotation Bearings, Fixed - 1000K at Pier 27.

**NOTES:**

- The structural steel plates of the bearing assembly shall conform to the requirements of AASHTO M 270 Grade 50W.
- Two  $\frac{1}{8}$  in. adjusting shims shall be provided for each bearing in addition to all other plates or shims and placed as shown on bearing details.
- H.S. bolts in bearing assembly shall be galvanized according to AASHTO M298 Class 50.
- If base cylinder is recessed into the bottom bearing plate, the thickness of the bottom plate shall be Tb plus the depth of the recess.



**TOP  $\phi$  - PISTON PLAN**



**BOTTOM BEARING  $\phi$  AND  
BASE CYLINDER PLAN**

\P0820318-CONN-05-001-BR.DGN, \P0820318-CONN-99-001-BR.DGN, \P0820318-CONN-01-STRUCT.LCAD, \P0820318-DESIGN-0820318\KSHEET, \P0820318-CONN-05-002-SHT-BR.DGN, \P0820318-CONN-05-001-BR.DGN, \P0820318-CONN-99-001-BR.DGN, \P0820318-CONN-01-STRUCT.LCAD, \P0820318-DESIGN-0820318\KSHEET, \P0820318-CONN-05-002-SHT-BR.DGN, \P0820318-CONN-05-001-BR.DGN, \P0820318-CONN-99-001-BR.DGN, \P0820318-CONN-01-STRUCT.LCAD, \P0820318-DESIGN-0820318\KSHEET, \P0820318-CONN-05-002-SHT-BR.DGN, \P0820318-CONN-05-001-BR.DGN, \P0820318-CONN-99-001-BR.DGN, \P0820318-CONN-01-STRUCT.LCAD, \P0820318-DESIGN-0820318\KSHEET, \P0820318-CONN-05-002-SHT-BR.DGN

FILE NAME = #FILE#	USER NAME = #USER#	DESIGNED - KK	REVISED -
TENG & ASSOCIATES, INC. ENGINEERS/ARCHITECTS/PLANNERS CHICAGO, ILLINOIS	PLOT SCALE = #SCALE#	DRAWN - KK	REVISED -
	PLOT DATE = #DATE#	CHECKED - TCJ	REVISED -
		DATE - 06/04/10	REVISED -

STATE OF ILLINOIS  
DEPARTMENT OF TRANSPORTATION  
I-70 CONNECTION OVER  
NS, TRRA, MCT AND INDUSTRIAL DR.

**BEARING DETAILS**  
**2 OF 2**

SCALE: SHEET NO. S-74 OF S-111 STA. 134+22.00 TO STA.

F.A.P. RTE.	SECTION	COUNTY	TOTAL SHEETS	SHEET NO.
998	82-2-IHVB	ST. CLAIR	285	184
SN 082-0318 (EB) & 0319 (WB)		CONTRACT NO. 76C44		
FED. ROAD DIST. NO.		ILLINOIS FED. AID PROJECT		