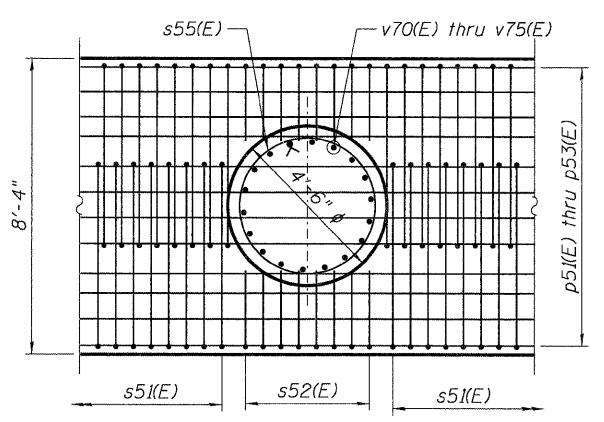
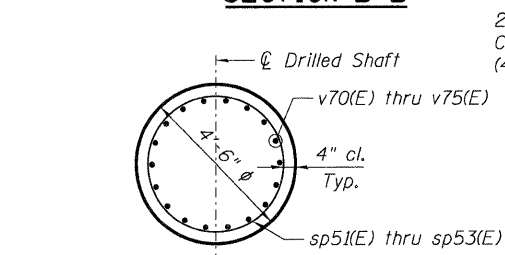


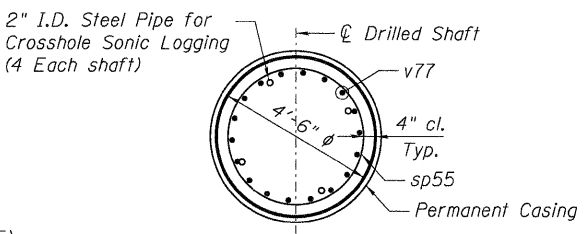
SECTION B-B



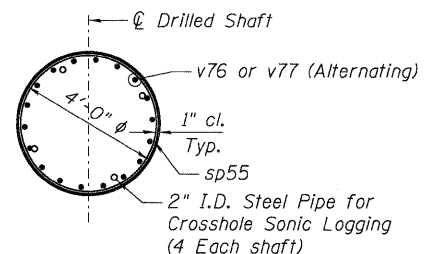
SECTION C-C



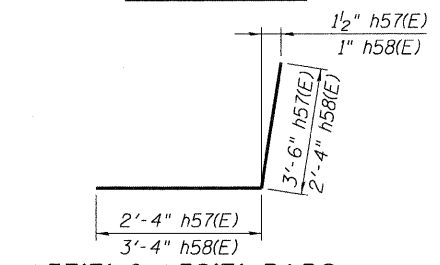
SECTION D-D



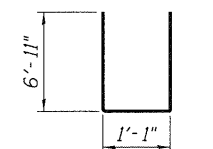
SECTION E-E



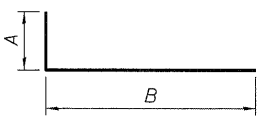
SECTION F-F



h57(E) & h58(E) BARS

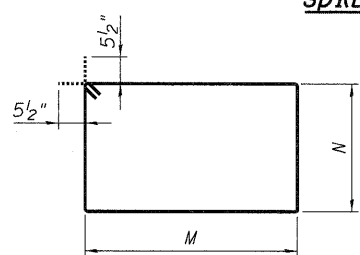


n51(E) BAR



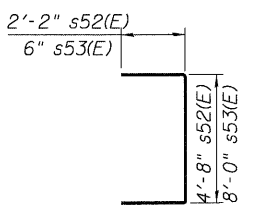
p51(E), p52(E), p57(E) p59(E) & p65(E)

Bar	A	B
p51(E)	1'-6"	43'-4"
p52(E)	1'-6"	37'-7"
p57(E)	1'-7"	48'-11"
p59(E)	1'-7"	26'-2"
p65(E)	1'-4"	24'-2"

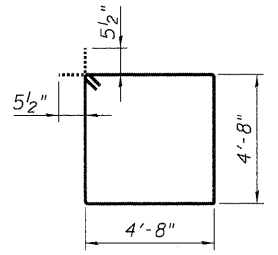


s51(E), s56(E) & s57(E) BARS

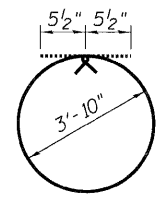
Bar	M	N
s51(E)	5'-3"	4'-8"
s56(E)	5'-3"	6'-7"
s57(E)	5'-3"	6'-3"



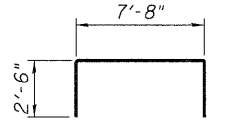
s52(E) & s53(E) BARS



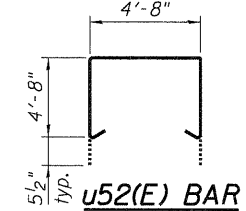
s54(E) BAR



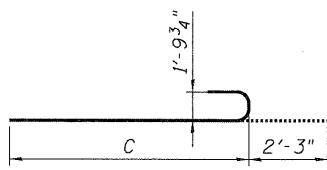
s55(E) BAR



u51(E) BAR

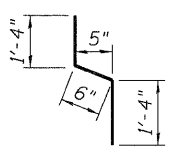


u52(E) BAR

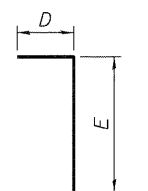


v70(E) thru v75(E) BARS

Bar	C
v70(E)	20'-8"
v71(E)	18'-8"
v72(E)	19'-2"
v73(E)	17'-2"
v74(E)	17'-8"
v75(E)	15'-8"

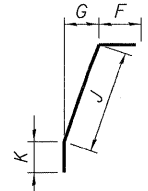


v54(E) BAR



v51(E), v66(E) & v67(E) BARS

Bar	D	E
v51(E)	1'-11"	1'-10"
v66(E)	10"	4'-0"
v67(E)	8"	4'-0"



v68(E) & v69(E) BARS

Bar	F	G	J	K
v68(E)	10"	3"	1'-6"	2'-7"
v69(E)	8"	1"	6"	3'-6"

BILL OF MATERIAL

Item	Unit	Total
Concrete Structures	Cu. Yd.	331.5
Reinforcement Bars	Pound	119,150
Reinforcement Bars, Epoxy Coated	Pound	61,530
Bar Splicer	Each	97
Permanent Casing	Foot	672
Drilled Shaft in Soil	Cu. Yd.	396
Drilled Shaft in Rock	Cu. Yd.	6
Concrete Sealer	Sq. Ft.	1727
Mechanical Splicers	Each	216
Crosshole Sonic Logging	Each	1

BAR LIST

Bar	No.	Size	Length	Shape
h51(E)	10	#6	22'-10"	
h52(E)	10	#6	29'-1"	
h53(E)	58	#5	30'-0"	
h54(E)	2	#5	14'-10"	
h55(E)	2	#5	27'-5"	
h56(E)	18	#5	16'-3"	
h57(E)	11	#5	5'-10"	
h58(E)	11	#5	5'-8"	
h59(E)	22	#5	24'-3"	
n51(E)	33	#6	14'-11"	
p51(E)	12	#9	44'-10"	
p52(E)	12	#9	39'-1"	
p53(E)	12	#9	28'-1"	
p54(E)	28	#6	25'-3"	
p55(E)	28	#6	19'-8"	
p56(E)	14	#6	25'-7"	
p57(E)	16	#9	50'-6"	
p58(E)	16	#9	44'-0"	
p59(E)	16	#9	27'-9"	
60(E)	27	#5	10'-10"	
p61(E)	9	#5	7'-11"	
p62(E)	27	#5	11'-6"	
p63(E)	9	#5	7'-2"	
p64(E)	2	#5	19'-10"	
p65(E)	12	#8	25'-6"	
p66(E)	14	#6	24'-2"	
s51(E)	282	#5	20'-9"	
s52(E)	80	#5	9'-0"	
s53(E)	40	#5	9'-0"	
s54(E)	19	#5	19'-7"	
s55(E)	78	#5	13'-0"	
s56(E)	24	#5	24'-7"	
s57(E)	12	#5	23'-11"	
sp51(E)	1	#5	18'-8"	
sp52(E)	2	#5	17'-2"	
sp53(E)	3	#5	15'-8"	
sp54	6	#5	35'-0"	
sp55	6	#5	78'-11"	
u51(E)	74	#5	12'-8"	
u52(E)	4	#5	14'-11"	
v51(E)	97	#5	3'-9"	
v52(E)	128	#7	13'-2"	
v53(E)	128	#7	14'-8"	
v54(E)	97	#4	3'-2"	
v55(E)	66	#6	8'-11"	
v66(E)	25	#5	4'-10"	
v67(E)	6	#5	4'-8"	
v68(E)	25	#5	4'-11"	
v69(E)	6	#5	4'-8"	
v70(E)	9	#14	22'-11"	
v71(E)	9	#14	20'-11"	
v72(E)	18	#14	21'-5"	
v73(E)	18	#14	19'-5"	
v74(E)	27	#14	19'-11"	
v75(E)	27	#14	17'-11"	
v76	54	#14	57'-0"	
v77	162	#14	58'-11"	

* Height of the spiral (not length) is provided in the Bar List.

NOTES:

1. Work this sheet with Shts. S-75, S-76 & S-77.
2. The cost of steel pipes, pipe caps, and couplers for crosshole sonic logging shall be included in Drilled Shaft in Soil and Drilled Shaft in Rock.
3. v(E) bars in the column/drilled shaft shall be placed as shown to provide space for p(E) bars in cap.
4. Quantities and reinforcement detailing shown are based on the top of shaft and estimated top of rock elevations shown and may change based on the actual elevations encountered at each shaft.
5. Concrete Sealer shall be applied to all exposed abutment areas including the bearing seats and steps, front face of backwall, top 1 ft. of the abutment face, north side of the backwall, and north and south face of abutment.
6. The exposed end of v51(E) bars are to be protected. The unused half of the abutment bar splicers to be incorporated into the approach slab are to be stored by the Contractor at a location as directed by the Engineer.

FILE NAME = ... USER NAME = #USER# ... DESIGNED - KK ... REVISIONS ... DATE - 06/04/10 ...