

LEGEND

① 12" SS REPAIR CLAMP, 25" LENGTH

NOTES

1 BOLTS & NUTS SHALL BE 304 SS PER ASTM A193 AND A194

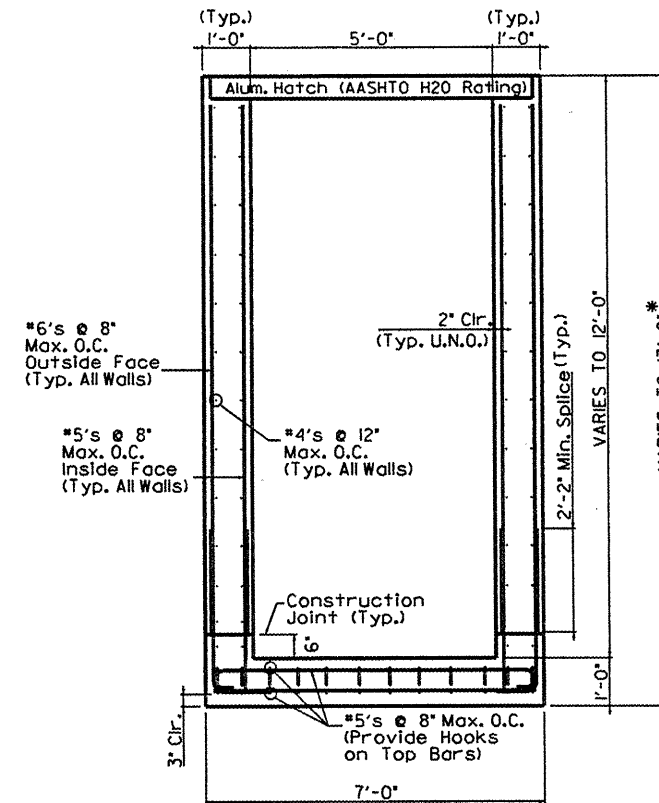
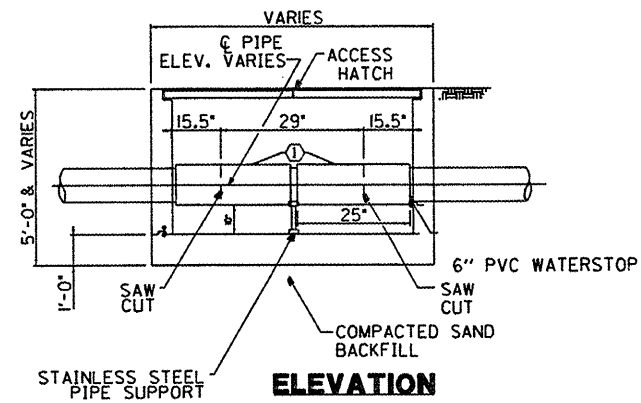
NOTES

REINFORCEMENT BARS SHALL BE ACCORDING TO SECTION 508 AND ARTICLE 1006.10 AND SHALL CONFORM TO ASTM A706, GRADE 60.

CONCRETE STRUCTURES SHALL BE ACCORDING TO SECTION 503 AND THE CLASS SHALL BE SI.

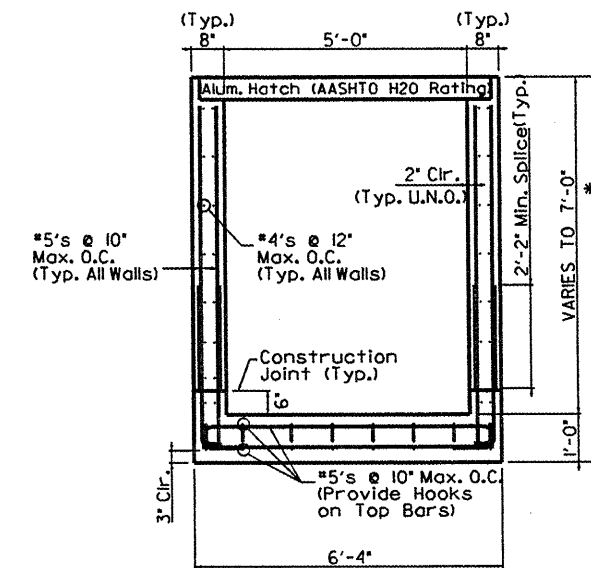
COMPACTED SAND BACKFILL SHALL BE ACCORDING TO SECTION 207.

REPAIR CLAMP AND PIPE SUPPORTS SHALL BE INCLUDED IN THE PAY ITEM CLEANOUT VAULT.



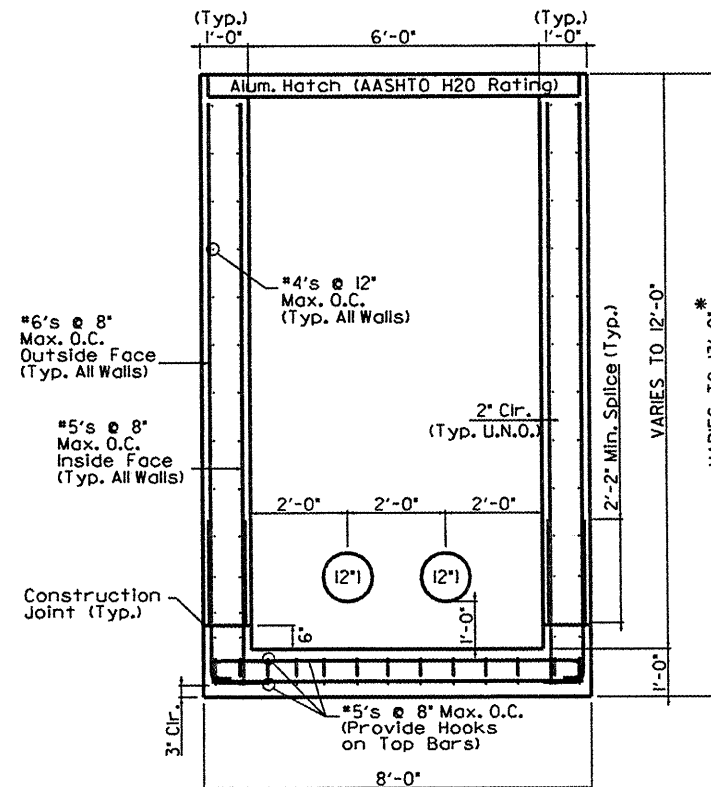
SHORT WALL ELEVATION

* MAXIMUM INSTALLATION DEPTH LIMITED TO 13'-0" FOR DESIGN REINFORCEMENT SHOWN. CONTACT STRUCTURAL ENGINEER FOR PROPOSED INSTALLATION DEPTHS GREATER THAN 13'-0".



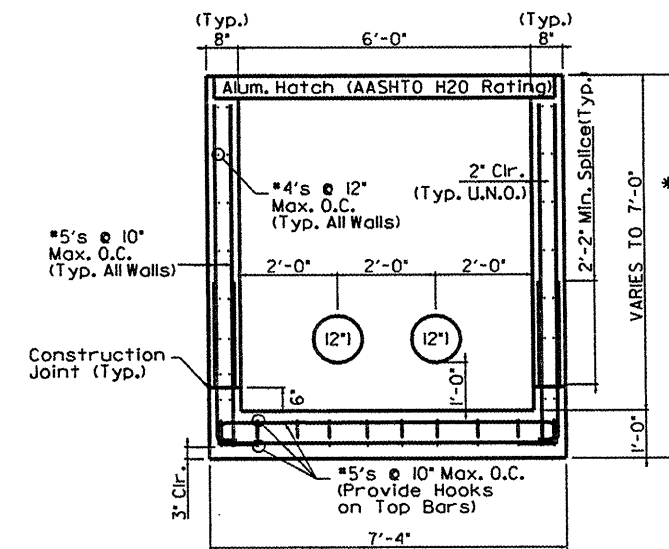
SHORT WALL ELEVATION

* MAXIMUM INSTALLATION DEPTH LIMITED TO 8'-0" FOR DESIGN REINFORCEMENT SHOWN.



LONG WALL ELEVATION

* MAXIMUM INSTALLATION DEPTH LIMITED TO 13'-0" FOR DESIGN REINFORCEMENT SHOWN. CONTACT STRUCTURAL ENGINEER FOR PROPOSED INSTALLATION DEPTHS GREATER THAN 13'-0".



LONG WALL ELEVATION

* MAXIMUM INSTALLATION DEPTH LIMITED TO 8'-0" FOR DESIGN REINFORCEMENT SHOWN.

FILE NAME *	USER NAME * #USER#	DESIGNED - EJC	REVISED -
#FILE#		DRAWN - WPM	REVISED -
	PLOT SCALE * #SCALE#	CHECKED - EEA	REVISED -
	PLOT DATE * #DATE#	DATE - 05/06/10	REVISED -

STATE OF ILLINOIS
 DEPARTMENT OF TRANSPORTATION

VAULT DETAILS
CLEANOUT INSTALLATION 25TH STREET

F.A. RTE.	SECTION	COUNTY	TOTAL SHEETS	SHEET NO.
VARIOUS/DIST 8 DEEP WELLS 200-2		ST. CLAIR	20	17
ILLINOIS FED. AID PROJECT			CONTRACT NO. 76062	

SCALE: NTS SHEET NO. 17 OF SHEETS STA. TO STA.