

STATE OF ILLINOIS  
DEPARTMENT OF TRANSPORTATION  
DIVISION OF HIGHWAYS

**PROPOSED  
HIGHWAY PLANS**

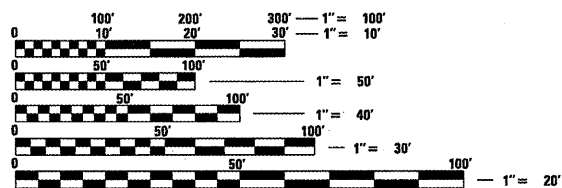
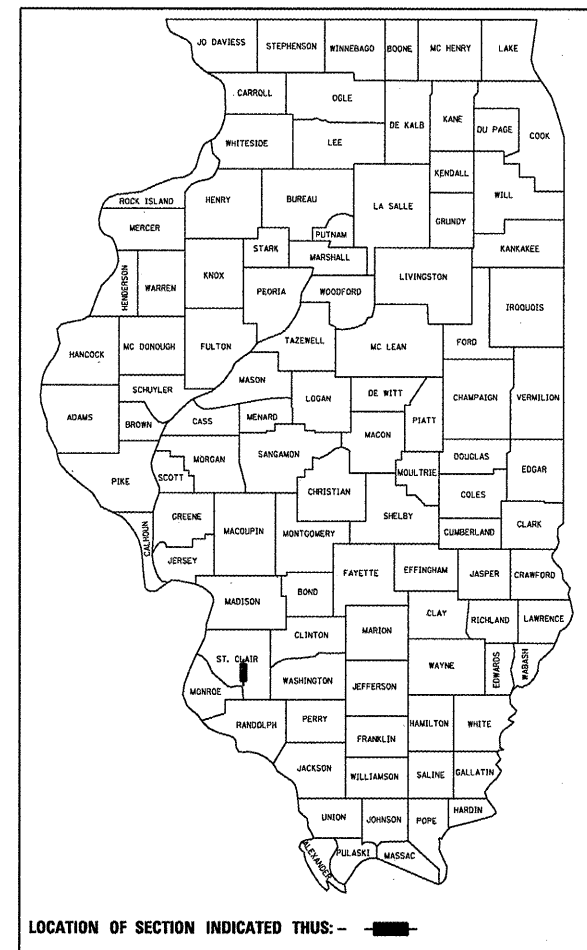
FAP ROUTE 103 (IL 13/15)  
SECTION 27-4  
PATCHING & RESURFACING  
ST. CLAIR COUNTY  
C-98-081-10

F.A.P. RTE.	SECTION	COUNTY	TOTAL SHEETS	SHEET NO.
103	271-4	ST. CLAIR	24	1
FED. ROAD DIST. NO.	ILLINOIS	CONTRACT NO. 76D97		

**INDEX OF SHEETS**

1. COVER SHEET
2. GENERAL NOTES, ADT, STANDARDS, COMMITMENTS
3. SUMMARY OF QUANTITIES
4. SCHEDULES
- 5.-6. TYPICAL SECTIONS
- 7.-13. PLAN SHEETS
- 14.- 20. PAVEMENT MARKING PLANS
21. PAVEMENT JOINT DETAIL
22. PAVEMENT MARKING DETAILS
- 23.-24. TRAFFIC SIGNAL MODERNIZATION

D-98-063-10

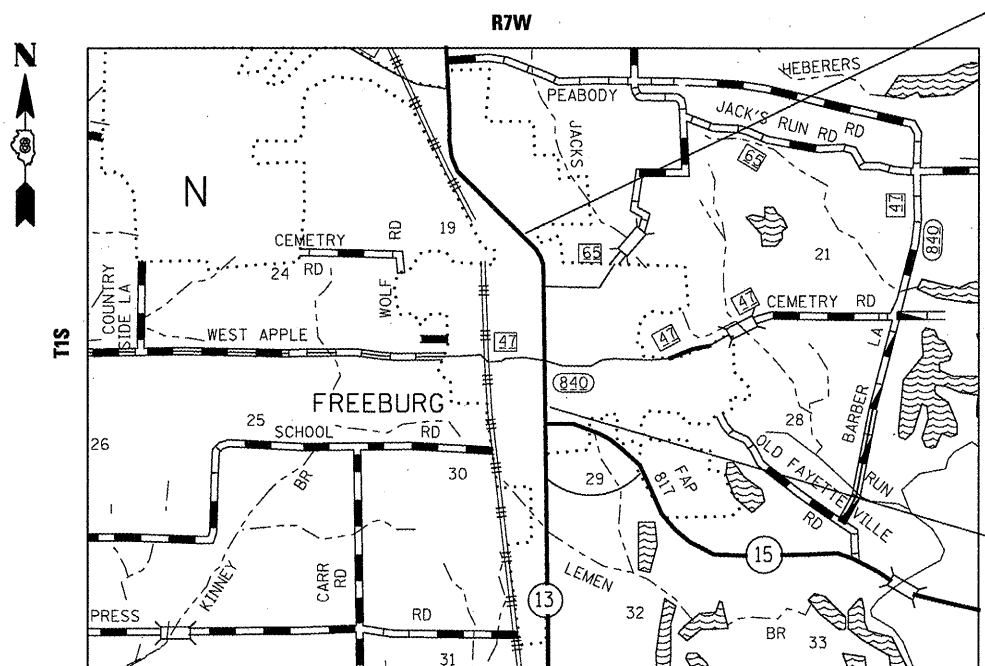


FULL SIZE PLANS HAVE BEEN PREPARED USING STANDARD ENGINEERING SCALES. REDUCED SIZED PLANS WILL NOT CONFORM TO STANDARD SCALES. IN MAKING MEASUREMENTS ON REDUCED PLANS, THE ABOVE SCALES MAY BE USED.

J.U.L.I.E.  
JOINT UTILITY LOCATION INFORMATION FOR EXCAVATION  
1-800-892-0123  
OR 811

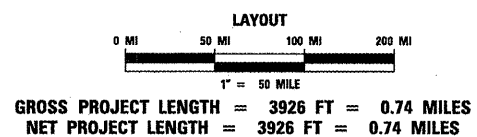
PROJECT ENGINEER: PATTI LEBEAU (618)346-3179  
SQUAD LEADER: CHERYL KEPLAR (618)346-3186

CONTRACT NO. 76D97



BEGIN PROJECT  
STA. 364 + 10  
(WOODS MANOR)  
LAT. = 38.431269  
LONG. = -89.909050

END PROJECT  
STA. 403 + 36  
(LINCOLN CT.)  
LAT. = 38.420963  
LONG. = -89.909064



STATE OF ILLINOIS  
DEPARTMENT OF TRANSPORTATION  
DIVISION OF HIGHWAYS

SUBMITTED May 7 2010  
Mark C. Jamel  
DEPUTY DIRECTOR OF HIGHWAYS, REGION 5 ENGINEER

June 05 2010  
Scott E. Stitt, P.E.  
Acting ENGINEER OF DESIGN AND ENVIRONMENT

June 25 2010  
Christine M. Reed  
DIRECTOR OF HIGHWAYS, CHIEF ENGINEER

PRINTED BY THE AUTHORITY  
OF THE STATE OF ILLINOIS