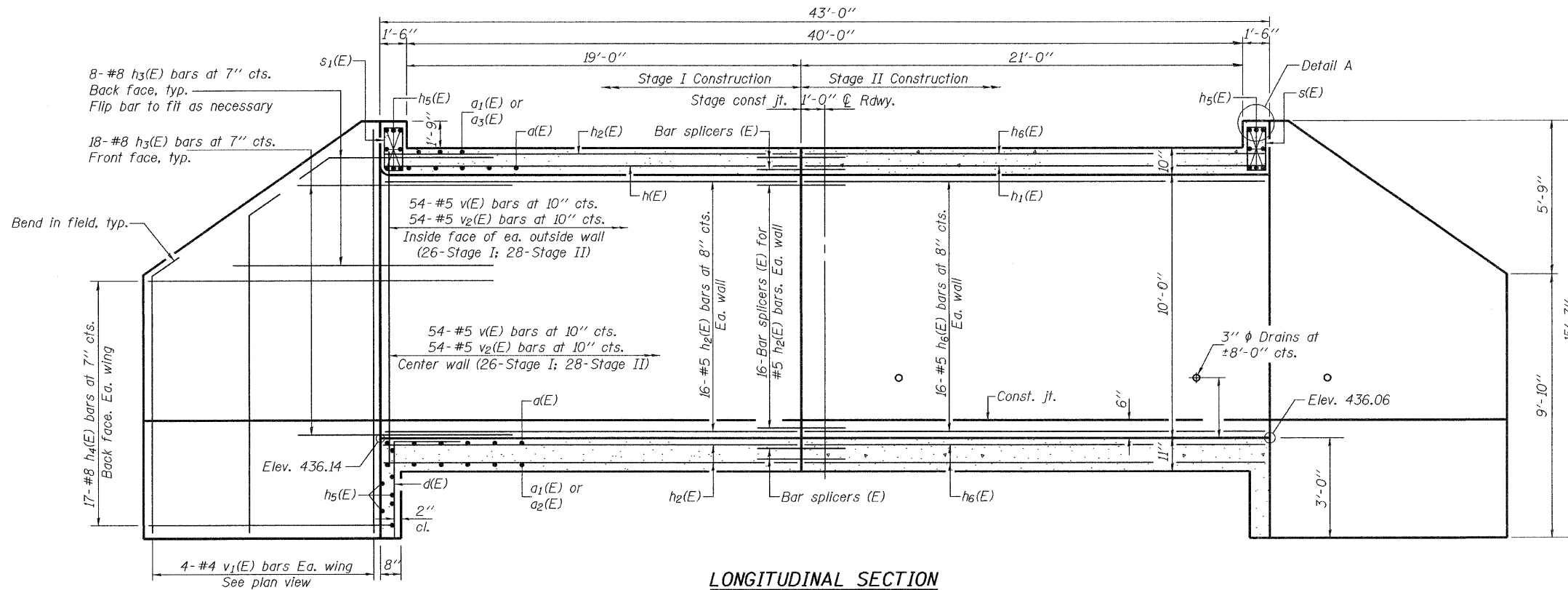
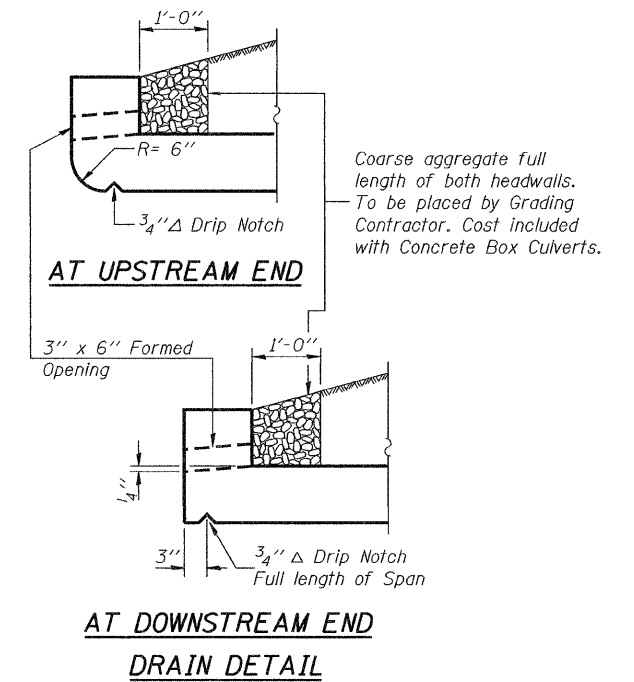


STATE OF ILLINOIS
DEPARTMENT OF TRANSPORTATION



LONGITUDINAL SECTION

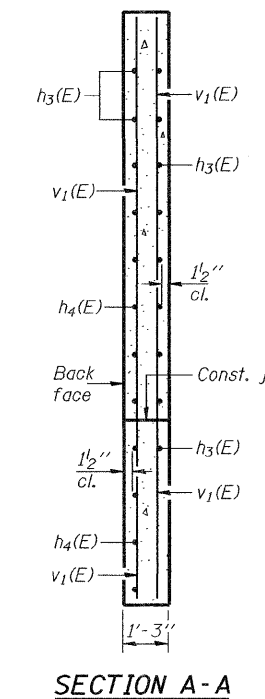


MIN. BAR LAP
#5 bars = 3'-3"

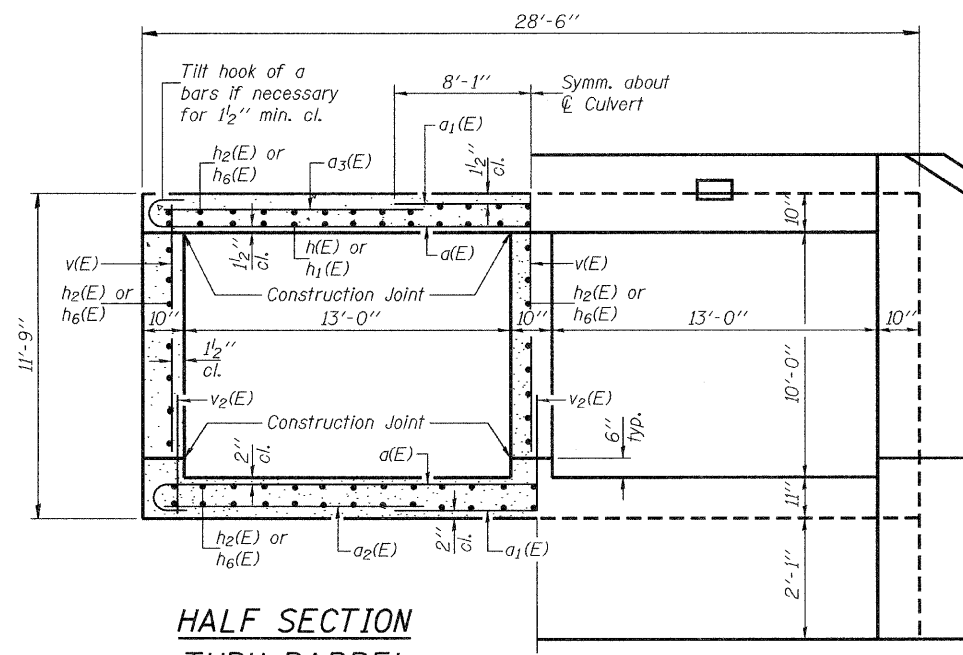
BILL OF MATERIAL

Bar	No.	Size	Length	Shape
a(E)	168	#7	29'-10"	U
a1(E)	168	#7	16'-2"	U
a2(E)	46	#4	8'-7"	U
a3(E)	58	#5	9'-3"	U
d(E)	58	#4	4'-6"	L
h(E)	39	#6	20'-3"	U
h1(E)	39	#6	22'-3"	U
h2(E)	135	#5	20'-3"	U
h3(E)	104	#8	10'-0"	U
h4(E)	68	#8	17'-0"	U
h5(E)	22	#6	28'-3"	U
h6(E)	135	#5	22'-3"	U
s(E)	29	#4	7'-11"	L
s1(E)	29	#4	7'-9"	L
v(E)	166	#5	10'-0"	U
v1(E)	16	#5	15'-4"	U
v2(E)	162	#5	4'-8"	U
Concrete Box Culverts		Cu. Yd.	163.1	
Reinforcement Bars, Epoxy Coated		Lbs.	35150	

CULVERT DETAILS
STRUCTURE NO. 073-2007

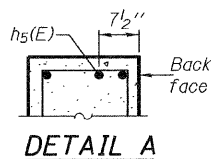


SECTION A-A

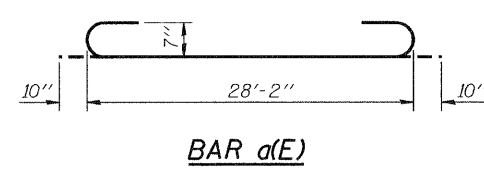


HALF SECTION THRU BARREL

HALF END ELEVATION

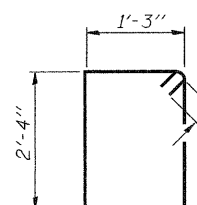


DETAIL A

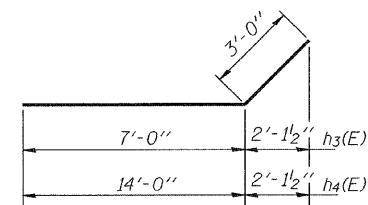


BAR a(E)

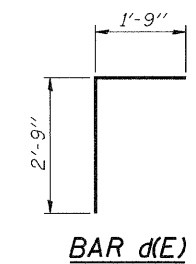
Note: Space middle h5(E) bar to miss drilled anchor bolts, typ. ea. headwall.



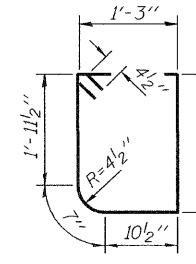
BAR s(E)



BARS h3(E) & h4(E)



BAR d(E)



BAR s1(E)

DESIGNED	Jay D. Edwards
CHECKED	Michael D. Rolape
DRAWN	h.t. duong
CHECKED	JDE/MDR

EXAMINED	Thomas J. Damagala	June 14, 2010
PASSED	Ralph E. Anderson	

SHEET NO. 7	F.A.P. RTE.	SECTION	COUNTY	TOTAL SHEETS	SHEET NO.
	841	108B-1	PERRY	27	25
9 SHEETS	CONTRACT NO. 78059				
FED. ROAD DIST. NO. _ ILLINOIS FED. AID PROJECT					