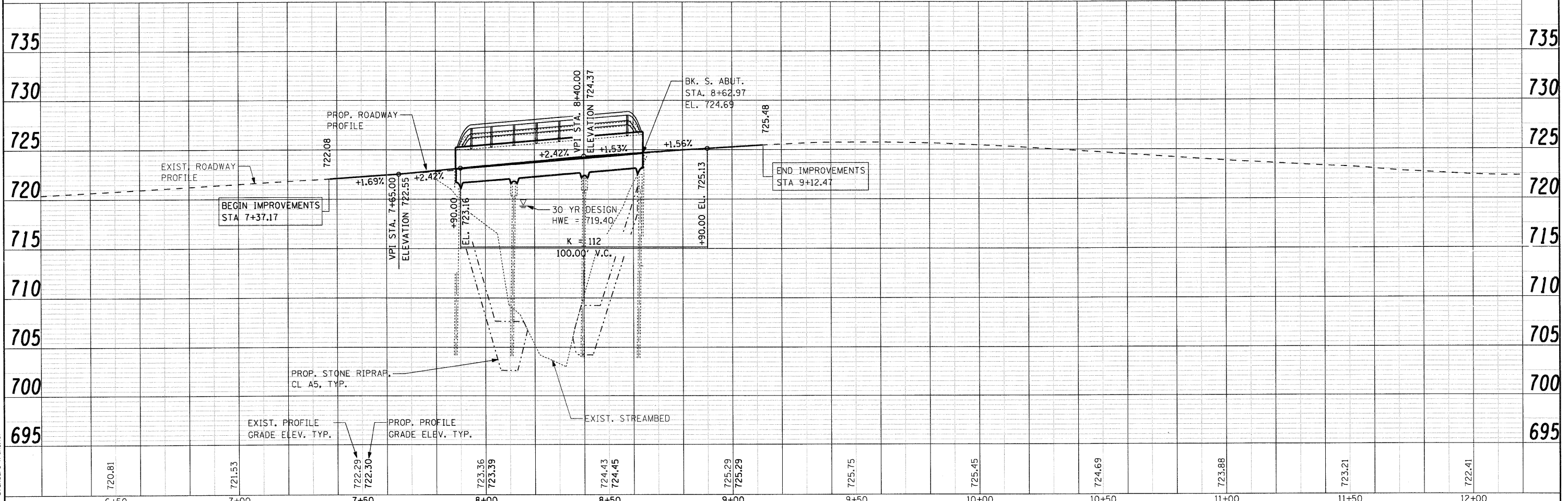
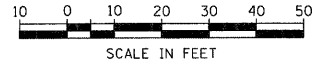
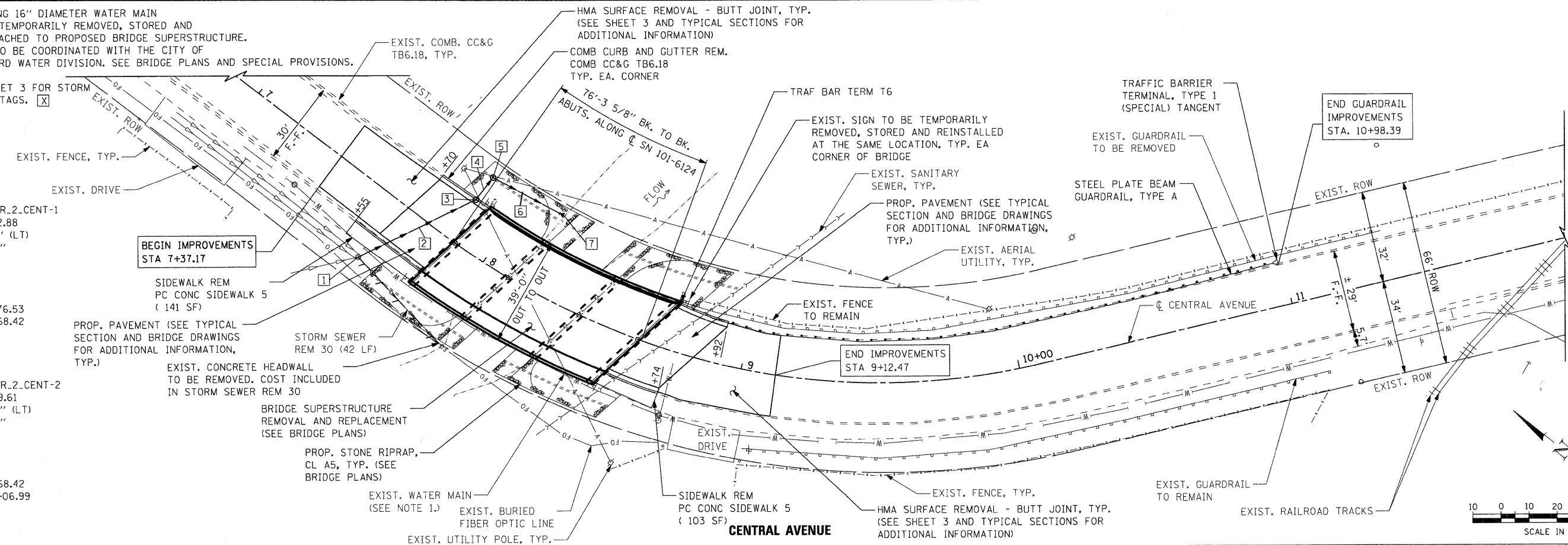


NOTE 1. EXISTING 16" DIAMETER WATER MAIN TO BE TEMPORARILY REMOVED, STORED AND RE-ATTACHED TO PROPOSED BRIDGE SUPERSTRUCTURE. WORK TO BE COORDINATED WITH THE CITY OF ROCKFORD WATER DIVISION. SEE BRIDGE PLANS AND SPECIAL PROVISIONS.

NOTE 2. SEE SHEET 3 FOR STORM SEWER TAGS. [X]

PROP. CURVE PR.2.CENT-1
 PI STA. = 8+22.88
 $\Delta = 18^\circ 32' 19''$ (LT)
 $D = 20^\circ 10' 28''$
 $R = 284.00'$
 $T = 46.35'$
 $L = 91.89'$
 $E = 3.76'$
 P.C. STA = 7+76.53
 P.T. STA = 8+68.42

PROP. CURVE PR.2.CENT-2
 PI STA. = 9+39.61
 $\Delta = 32^\circ 24' 14''$ (LT)
 $D = 23^\circ 23' 10''$
 $R = 245.00'$
 $T = 71.19'$
 $L = 138.56'$
 $E = 10.13'$
 P.C. STA = 8+68.42
 P.T. STA = 10+06.99



COMPANY NAME: SEC Group, Inc.
 PROJECT CONTACT: Robert C. Davis
 CLIENT: City of Rockford
 DATE PLOTTED: 1/26/2010 10:59 PM
 FILE NAME: 090026-pnp01-PDR.dgn
 PLOT DRIVER: pdf.plt
 STANDARD: trans.tbl

SEC Group, Inc.
 An HR Green Company
 420 N. Front Street
 Rockford, IL 61102-1130
 T 815.398.7779 F 815.398.1781
 www.secgroupinc.com
 1800 W. 19th Street, New Lenox, IL, Chicago

USER NAME = whood	DESIGNED - KMA	REVISED -
FILE NAME = 090026-pnp01-PDR.dgn	DRAWN - WJH	REVISED -
PLOT SCALE = 1"=20'	CHECKED - TH	REVISED -
PLOT DATE = 1/26/2010	DATE - 1/26/10	REVISED -

CITY OF ROCKFORD

**CENTRAL AVENUE OVER THE SOUTH BRANCH OF KENT CREEK
 PROPOSED PLAN AND PROFILE**

SCALE: 1"=20' SHEET NO. 1 OF 1 SHEETS STA. 6+50 TO STA. 12+00

F.A.U. RTE. 5102	SECTION 09-00557-00-BR	COUNTY Winnebago	TOTAL SHEETS 18	SHEET NO. 5
FED. ROAD DIST. NO. 2 ILLINOIS FED. AID PROJECT			CONTRACT NO. 85508	