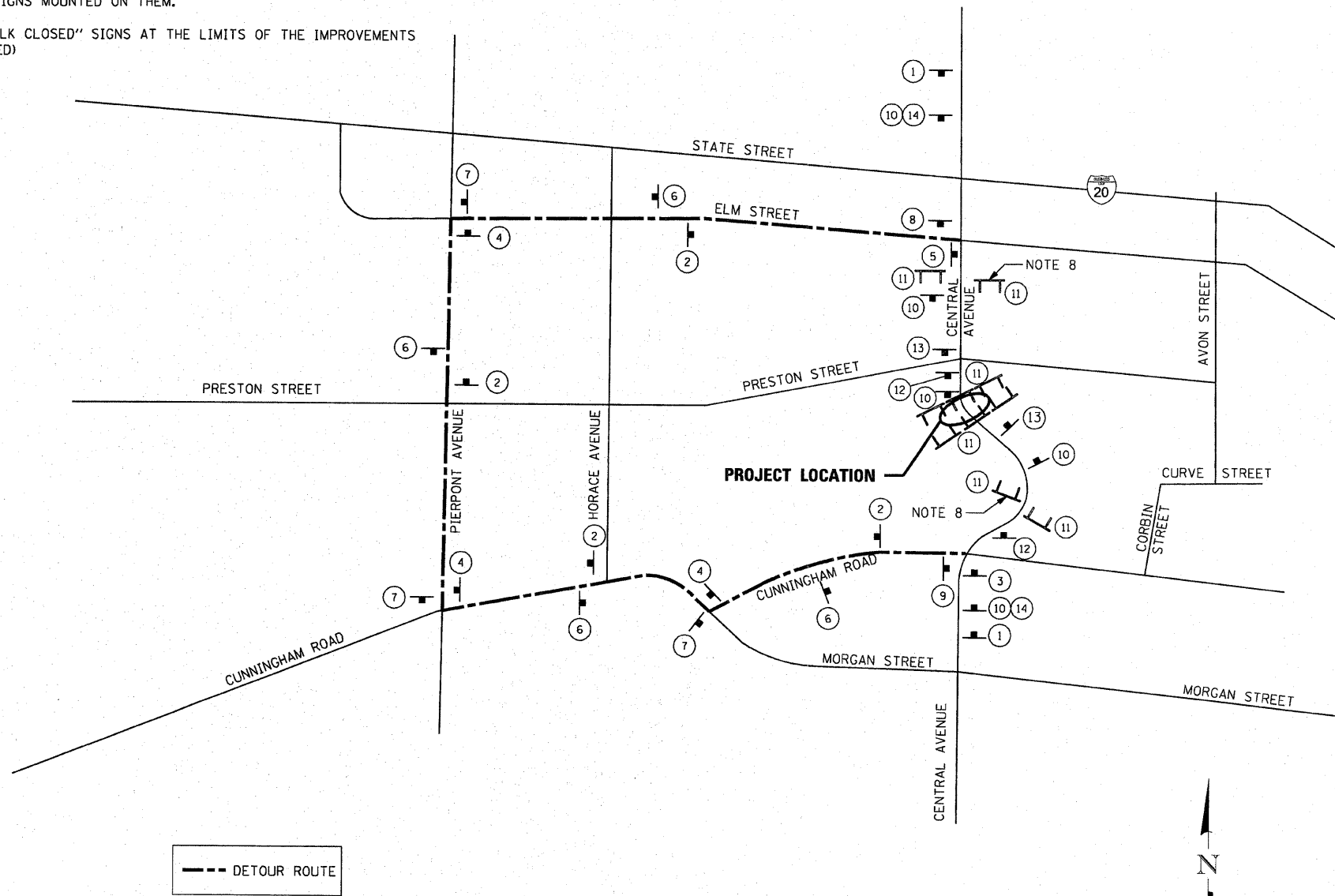


**ROAD CLOSURE GENERAL NOTES:**

1. THE CONTRACTOR WILL BE ALLOWED TO CLOSE CENTRAL AVENUE TO THRU TRAFFIC BETWEEN STATE STREET AND CUNNINGHAM ROAD IN ACCORDANCE WITH THE SPECIAL PROVISIONS.
2. THE DETOUR ROUTE SHALL BE POSTED PRIOR TO CLOSING THE ROAD.
3. ALL TRAFFIC CONTROL WORK ASSOCIATED WITH THE ROAD CLOSURE, SIGNING, TEMPORARY FENCING AND BARRICADING SHALL BE INCLUDED IN THE PAY ITEM FOR 'TRAFFIC CONTROL AND PROTECTION'.
4. THE CONTRATOR SHALL GIVE THE ENGINEER, THE CITY, IDOT, AND THE WINNEBAGO COUNTY HIGHWAY DEPARTMENT A 72 HOUR NOTICE PRIOR TO PLACING THE ADVANCE NOTICE SIGNS.
5. ADVANCE NOTICE SIGNS, (12), SHALL BE PLACED TWO WEEKS PRIOR TO CLOSING THE ROADWAY.
6. ALL SIGNS SHALL CONFORM TO SPACING REQUIREMENTS SET FORTH IN THE 'MANUAL ON UNIFORM TRAFFIC CONTROL DEVICES FOR STREETS AND HIGHWAYS'.
7. THE CONTRACTOR SHALL MAINTAIN ACCESS TO ADJACENT DRIVEWAYS IN ACCORDANCE WITH THE SPECIAL PROVISIONS.
8. PROVIDE PAIR OF STAGGERED TYPE 3 BARRICADES, (11), IN ACCORDANCE WITH HIGHWAY STANDARD BLR 22. EACH BARRICADE SHALL HAVE "ROAD CLOSED TO THRU TRAFFIC" SIGNS MOUNTED ON THEM.
9. PROVIDE "SIDEWALK CLOSED" SIGNS AT THE LIMITS OF THE IMPROVEMENTS (2 SIGNS REQUIRED)

**SIGN LEGEND**

- 1. W20-2 (48"x48") WITH STREET SIGN AND FLASHING AMBER LIGHT
- 2. M4-9 (30"x21") WITH STREET SIGN AND DIRECTION OF TRAFFIC
- 3. M4-9L (30"x24") WITH STREET SIGN AND DIRECTION OF TRAFFIC
- 4. M4-9R (30"x24") WITH STREET SIGN AND DIRECTION OF TRAFFIC
- 5. M4-8a (24"x18") WITH STREET SIGN AND INFORMATION SIGN
- 6. M4-9 (30"x24") WITH STREET SIGN AND DIRECTION OF TRAFFIC
- 7. M4-9L (30"x24") WITH STREET SIGN AND DIRECTION OF TRAFFIC
- 8. M4-9R (30"x24") WITH STREET SIGN AND DIRECTION OF TRAFFIC
- 9. M4-8a (24"x18") WITH STREET SIGN AND INFORMATION SIGN
- 10. W20-3 (48"x48") WITH FLASHING AMBER LIGHT
- 11. R11-2 (48"x30") WITH 2 FLASHING AMBER LIGHTS
- 12. INFO (48"x30")
- 13. W20-3 (48"x48") WITH FLASHING AMBER LIGHT
- 14. .. MILES DISTANCE SIGN



**PROPOSED DETOUR ROUTE**  
(CENTRAL AVENUE - BRIDGE RE-CONSTRUCTION)

COMPANY NAME: Smith, G. Davis  
 PROJECT CONTACT: City of Rockford  
 CLIENT: 2/3/2010 12:30:55 PM  
 DATE PLOTTED: 09/02/06 01:11:09  
 FILE NAME: pdf.dwg  
 PLOT DRIVER: STANDARD-TRANS.TBL

**SEC Group, Inc.**  
 25141 Green Company  
 420 N. First Street,  
 Moline, IL 61201-2130  
 1.815.305.1779 F. 815.305.1791  
 www.secgroup.com  
 Microsoft, Oracle, AutoCAD, etc. are trademarks of their respective owners.

USER NAME = whoad	DESIGNED - KMA	REVISED -
FILE NAME = 090206-D.tr.dgn	DRAWN - WJH	REVISED -
PLOT SCALE = 1"=20'	CHECKED - TH	REVISED -
PLOT DATE = 2/3/2010	DATE - 2/3/10	REVISED -

**CITY OF ROCKFORD**

**CENTRAL AVENUE OVER THE SOUTH BRANCH OF KENT CREEK  
 TEMPORARY DETOUR PLAN**

SCALE: 1"=20' SHEET NO. 1 OF SHEETS STA. TO STA.

F.A.U. RTE.	SECTION	COUNTY	TOTAL SHEETS	SHEET NO.
5102	09-00557-00-BR	Winnebago	18	6
FED. ROAD DIST. NO. 2 [ILLINOIS] FED. AID PROJECT			CONTRACT NO. 85508	