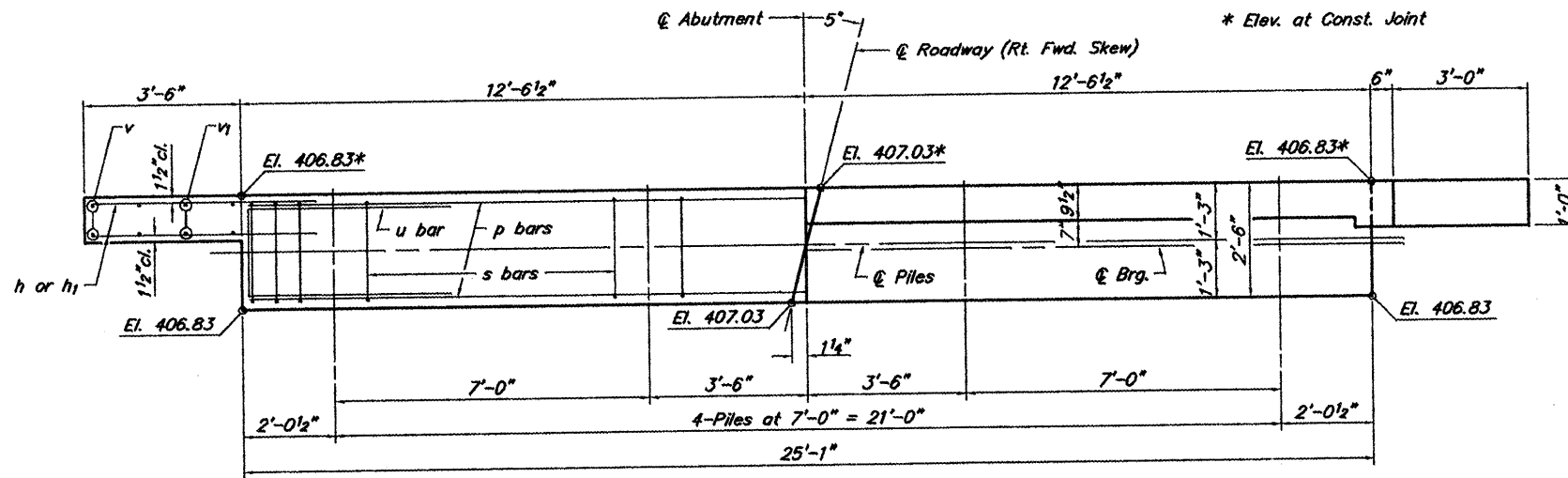
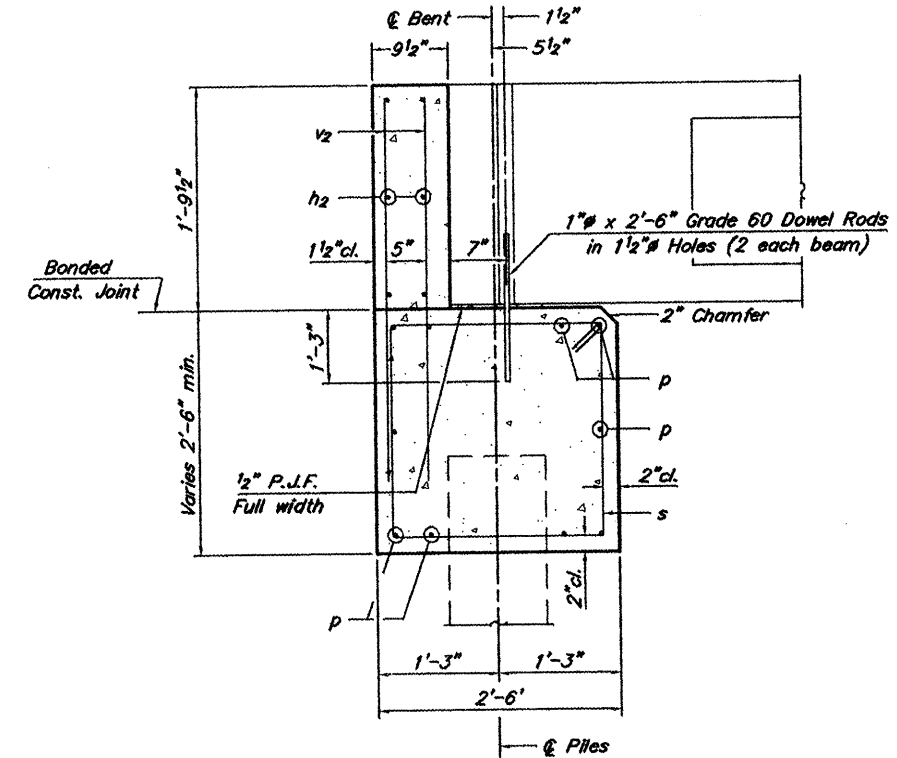


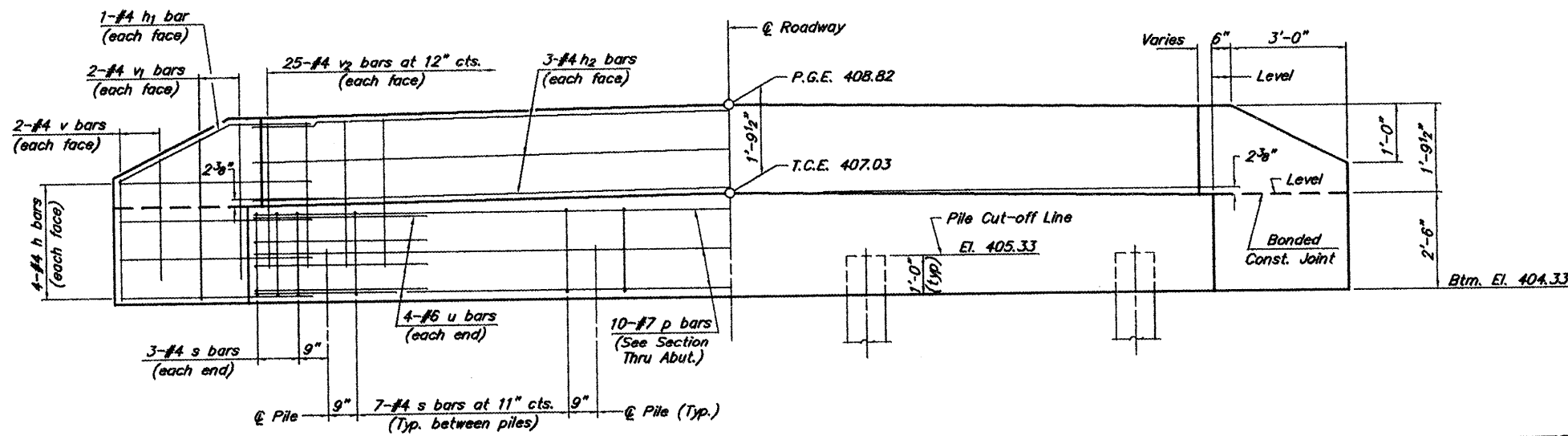
ROUTE	SECTION	COUNTY	TOTAL SHEETS	SHEET NO
TR 112	09-01162-00-BR	ALEXANDER	10	6
PROJECT NO. BROS-0003(099)		CONTRACT NO. 99424		



PLAN



SECTION THRU ABUT.
(At Right Angles)



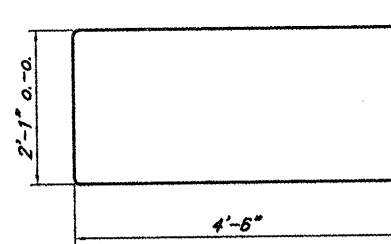
ELEVATION

NOTES

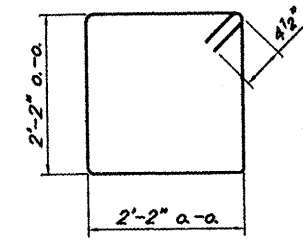
- The Backwall and the portion of the Wingwalls above the bonded construction joint shall be cast against the in-place beam.
- Reinforcement bars shall conform to A.A.S.H.T.O. M-31, M-42 or M-53, Grade 60.

DESIGN STRESSES

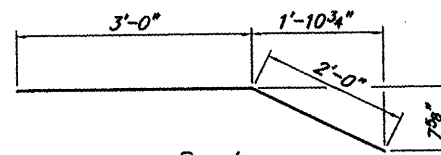
$f_c = 3,500 \text{ psi}$
 $f_y = 60,000 \text{ psi}$



Bar u



Bar s



Bar h1

BILL OF MATERIAL
FOR ONE ABUTMENT

Bar	No.	Size	Length	Shape
h	16	#4	5'-0"	—
h1	4	#4	5'-0"	—
h2	6	#4	24'-9"	—
p	10	#7	24'-9"	—
s	27	#4	9'-5"	□
u	8	#6	11'-1"	□
v	8	#4	3'-2"	—
v1	8	#4	3'-10"	—
v2	50	#4	3'-5"	—
Concrete Structures			8.4	Cu. Yds.
Reinforcement Bars			1,126	Lbs.

ABUTMENT
TOWNSHIP ROUTE 112 (WHITNEY HOLLOW ROAD)
COOPER CREEK
SECTION 09-01162-00-BR
ALEXANDER COUNTY
STRUCTURE NO. 002-3108