

SUMMARY OF QUANTITIES			URBAN TOTAL QUANTITIES	CONSTRUCTION TYPE CODE					URBAN TOTAL QUANTITIES	SUMMARY OF QUANTITIES			URBAN TOTAL QUANTITIES	CONSTRUCTION TYPE CODE				
CODE NO	ITEM	UNIT		0004 10% STATE 90% FED WILL CO	0004 10% STATE 90% FED KENDALL CO	0021 80% FED 13.3% STATE 6.7% TOWNSHIP	0021 100% TOWNSHIP	0004 10% STATE 90% FED		0004 10% STATE 90% FED	0021 80% FED 13.3% STATE 6.7% TOWNSHIP	0021 100% TOWNSHIP		0004 10% STATE 90% FED	0004 10% STATE 90% FED	0021 80% FED 13.3% STATE 6.7% TOWNSHIP	0021 100% TOWNSHIP	
44201831	CLASS D PATCHES, TYPE III, 15 INCH	SO YD	120	84	36			*	66900200	NON-SPECIAL WASTE DISPOSAL	CU YD	1170	819	351				
44201833	CLASS D PATCHES, TYPE IV, 15 INCH	SO YD	100	70	30			*	66900530	SOIL DISPOSAL ANALYSIS	EACH	2	1	1	1			
48203029	HOT-MIX ASPHALT SHOULDERS, 8"	SO YD	864	604.8	259.2			*	66901001	REGULATED SUBSTANCES PRE-CONSTRUCTION PLAN	LSUM	1	0.7	0.3				
54261615	CONCRETE END SECTION, STANDARD 542001, 15", 1:6	EACH	2	2				*	66901003	REGULATED SUBSTANCES FINAL CONSTRUCTION REPORT	LSUM	1	0.7	0.3				
54261624	CONCRETE END SECTION, STANDARD 542001, 24", 1:6	EACH	2	1	1			*	66901006	REGULATED SUBSTANCES MONITORING	CAL DA	12	8	4				
542A0220	PIPE CULVERTS, CLASS A, TYPE 1 15"	FOOT	40	40					67000400	ENGINEER'S FIELD OFFICE, TYPE A	CAL MO	12	8	4				
542A0229	PIPE CULVERTS, CLASS A, TYPE 1 24"	FOOT	55	38.5	16.5				67100100	MOBILIZATION	L SUM	1	0.7	0.3				
60100060	CONCRETE HEADWALLS FOR PIPE DRAINS	EACH	2	1	1				70103815	TRAFFIC CONTROL SURVEILLANCE	CAL DA	20	14	6				
60108100	PIPE UNDERDRAINS 4" (SPECIAL)	FOOT	186	130.2	55.8				70300100	SHORT TERM PAVEMENT MARKING	FOOT	1455	1018.5	436.5				
60108204	PIPE UNDERDRAINS, TYPE 2, 4"	FOOT	3991	2793.7	1197.3				70300150	SHORT TERM PAVEMENT MARKING REMOVAL	SO FT	545	399.5	145.5				
* 63000001	STEEL PLATE BEAM GUARDRAIL, TYPE A, 6 FOOT POSTS	FOOT	797.5	558.3	239.2				70300210	TEMPORARY PAVEMENT MARKING LETTERS AND SYMBOLS	SO FT	101.7	71.2	30.5				
* 63000370	LONG-SPAN GUARDRAIL OVER CULVERT, 25 FT SPAN	FOOT	50	35	15				70300220	TEMPORARY PAVEMENT MARKING - LINE 4"	FOOT	7999	5599.3	2399.7				
* 63100167	TRAFFIC BARRIER TERMINAL, TYPE 1 (SPECIAL) TANGENT	EACH	4	3	1				70300240	TEMPORARY PAVEMENT MARKING - LINE 6"	FOOT	371	259.7	111.3				
									70300260	TEMPORARY PAVEMENT MARKING - LINE 12"	FOOT	106	74.2	31.8				

REVISOR SHEET 7/16/2021

* SPECIALTY ITEM REV-SEP

FILE NAME =	USER NAME = rdhjp	DESIGNED -	REVISED -
pw:\planroom\dtd\111\mof.gov\PI\DOT\Documents\DOT\0\files\District\Projects\P140313\CADD\Design\P140313-sh		DRAWN -	REVISED -
		CHECKED -	REVISED -
		DATE -	REVISED -

STATE OF ILLINOIS
DEPARTMENT OF TRANSPORTATION

ILL 126 AT COUNTY LINE RD.
SUMMARY OF QUANTITIES

SCALE: SHEET NO. 2 OF 5 SHEETS STA. TO STA.

F.A.U. RTE.	SECTION	COUNTY	TOTAL SHEETS	SHEET NO.
379	119CH&TS	WILL/KENDALL	61	5
CONTRACT NO. 62G10				
FED. ROAD DIST. NO. 1 ILLINOIS FED. AID PROJECT				

* SPECIALTY ITEM

SUMMARY OF QUANTITIES			URBAN TOTAL QUANTITIES	CONSTRUCTION TYPE CODE				URBAN TOTAL QUANTITIES	SUMMARY OF QUANTITIES			URBAN TOTAL QUANTITIES	CONSTRUCTION TYPE CODE			
CODE NO	ITEM	UNIT		0004 10% STATE 90% FED WILL CO	0004 10% STATE 90% FED KENDALL CO	0021 80% FED 13.3% STATE 6.7% TOWNSHIP	0021 100% TOWNSHIP		CODE NO	ITEM	UNIT		0004 10% STATE 90% FED	0004 10% STATE 90% FED	0021 80% FED 13.3% STATE 6.7% TOWNSHIP	0021 100% TOWNSHIP
70300280	TEMPORARY PAVEMENT MARKING - LINE 24"	FOOT	74	51.8	22.2			* 78100100	RAISED REFLECTIVE PAVEMENT MARKER	EACH	88	62	26			
70300904	PAVEMENT MARKING TAPE, TYPE IV 4"	FOOT	7846	5492.2	2353.8			* 78200011	BARRIER WALL REFLECTORS, TYPE C	EACH	200	140	60			
70400100	TEMPORARY CONCRETE BARRIER	FOOT	1250	875	375			78300200	RAISED REFLECTIVE PAVEMENT MARKER	EACH	88	62	26			
70400200	RELOCATE TEMPORARY CONCRETE BARRIER	FOOT	1250	875	375				REMOVAL							
70600241	IMPACT ATTENUATORS, TEMPORARY (NON-REDIRECTIVE, NARROW), TEST LEVEL 2	EACH	1	1				* 81028200	UNDERGROUND CONDUIT, GALVANIZED STEEL, 2" DIA.	FOOT	633			633		
70600342	IMPACT ATTENUATORS, RELOCATE (NON-REDIRECTIVE, NARROW), TEST LEVEL 2	EACH	1	1				* 81028220	UNDERGROUND CONDUIT, GALVANIZED STEEL, 3" DIA.	FOOT	169			169		
* 72000100	SIGN PANEL - TYPE 1	SO FT	72.6	45.2	19.4	8		* 81028240	UNDERGROUND CONDUIT, GALVANIZED STEEL, 4" DIA.	FOOT	239			239		
* 72800100	TELESCOPING STEEL SIGN SUPPORT	FOOT	90	63	27			* 81400100	HANDHOLE	EACH	1			1		
* 72000200	SIGN PANEL - TYPE 2	SO FT	21			21		* 81400200	HEAVY-DUTY HANDHOLE	EACH	5			5		
72501000	TERMINAL MARKER - DIRECT APPLIED	EACH	4	3	1			* 81400300	DOUBLE HANDHOLE	EACH	1			1		
* 78000100	THERMOPLASTIC PAVEMENT MARKING - LETTERS AND SYMBOLS	SO FT	101.7	71.2	30.5			* 87301225	ELECTRIC CABLE IN CONDUIT, SIGNAL NO. 14 3C	FOOT	256			256		
* 78000200	THERMOPLASTIC PAVEMENT MARKING - LINE 4"	FOOT	7999	5599.3	2399.7			* 87301245	ELECTRIC CABLE IN CONDUIT, SIGNAL NO. 14 5C	FOOT	1281			1281		
* 78000400	THERMOPLASTIC PAVEMENT MARKING - LINE 6"	FOOT	371	259.7	111.3			* 87301255	ELECTRIC CABLE IN CONDUIT, SIGNAL NO. 14 7C	FOOT	465			465		
* 78000600	THERMOPLASTIC PAVEMENT MARKING - LINE 12"	FOOT	106	74.2	31.8											
* 78000650	THERMOPLASTIC PAVEMENT MARKING - LINE 24"	FOOT	74	51.8	22.2											

REVISOR: [Signature] REVISED SHEET 7/16/2021

* SPECIALTY ITEM REV-SEP

FILE NAME =	USER NAME = rdhjp	DESIGNED -	REVISED -
pw:\planroom\dtd\111\mof.gov\PI\DOT\Documents\DOT\01\files\ofstr\ct\NProjects\P140313\CADD\as\Des\gn\P140313-sh		DRAWN -	REVISED -
PLOT SCALE = 100.0000' / 1in		CHECKED -	REVISED -
PLOT DATE = 5/10/2021		DATE -	REVISED -

STATE OF ILLINOIS
DEPARTMENT OF TRANSPORTATION

ILL 126 AT COUNTY LINE RD.
SUMMARY OF QUANTITIES

SCALE:	SHEET NO. 3 OF 5 SHEETS	STA.	TO STA.	F.A.U. RTE. 379	SECTION 119CH&TS	COUNTY WILL/KENDALL	TOTAL SHEETS 61	SHEET NO. 6	CONTRACT NO. 62G10
--------	-------------------------	------	---------	-----------------	------------------	---------------------	-----------------	-------------	--------------------

FED. ROAD DIST. NO. 1 ILLINOIS FED. AID PROJECT

* SPECIALTY ITEM

SUMMARY OF QUANTITIES			CONSTRUCTION TYPE CODE					SUMMARY OF QUANTITIES			CONSTRUCTION TYPE CODE				
CODE NO	ITEM	UNIT	URBAN TOTAL QUANTITIES	0004 10% STATE 90% FED WILL CO	0004 10% STATE 90% FED KENDALL CO	0021 80% FED 13.3% STATE 6.7% TOWNSHIP	0021 100% TOWNSHIP	CODE NO	ITEM	UNIT	URBAN TOTAL QUANTITIES	0004 10% STATE 90% FED	0004 10% STATE 90% FED	0021 80% FED 13.3% STATE 6.7% TOWNSHIP	0021 100% TOWNSHIP
* X1400107	FULL-ACTUATED CONTROLLER AND TYPE SUPER P CABINET	EACH	1			1									
* X1400150	SERVICE INSTALLATION, GROUND MOUNTED, METERED	EACH	1			1									
* X1400201	RADAR VEHICLE DETECTION SYSTEM, SINGLE APPROACH, STOP BAR	EACH	1			1									
X4021000	TEMPORARY ACCESS (PRIVATE ENTRANCE)	EACH	1	1											
X7010216	TRAFFIC CONTROL AND PROTECTION, (SPECIAL)	L SUM	1	0.7	0.3										
X7030005	TEMPORARY PAVEMENT MARKING REMOVAL	SO FT	3208	2245.6	962.4										
X7040125	PINNING TEMPORARY CONCRETE BARRIER	EACH	636	445	191										
* X8620200	UNINTERRUPTABLE POWER SUPPLY, SPECIAL	EACH	1			1									
Z0013798	CONSTRUCTION LAYOUT	L SUM	1	0.7	0.3										
Z0030850	TEMPORARY INFORMATION SIGNING	SO FT	77.1	54	23.1										
Z0073510	TEMPORARY TRAFFIC SIGNAL TIMING	EACH	3	2	1										

REVISED SHEET 7/16/2021

* SPECIALTY ITEM REV-SEP

FILE NAME =	USER NAME = rthjp	DESIGNED -	REVISOR -
pw:\planroom\dtd\illinois\gov\PI\DOT\Documents\DOT\Ofices\District\Projects\PI\40313\CADD\as\Design\PI\40313-s... DRAWN -		CHECKED -	REVISIONS -
PLOT SCALE = 100.0000' / 1" =		DATE -	
PLOT DATE = 5/10/2021			

**STATE OF ILLINOIS
DEPARTMENT OF TRANSPORTATION**

**ILL 126 AT COUNTY LINE RD.
SUMMARY OF QUANTITIES**

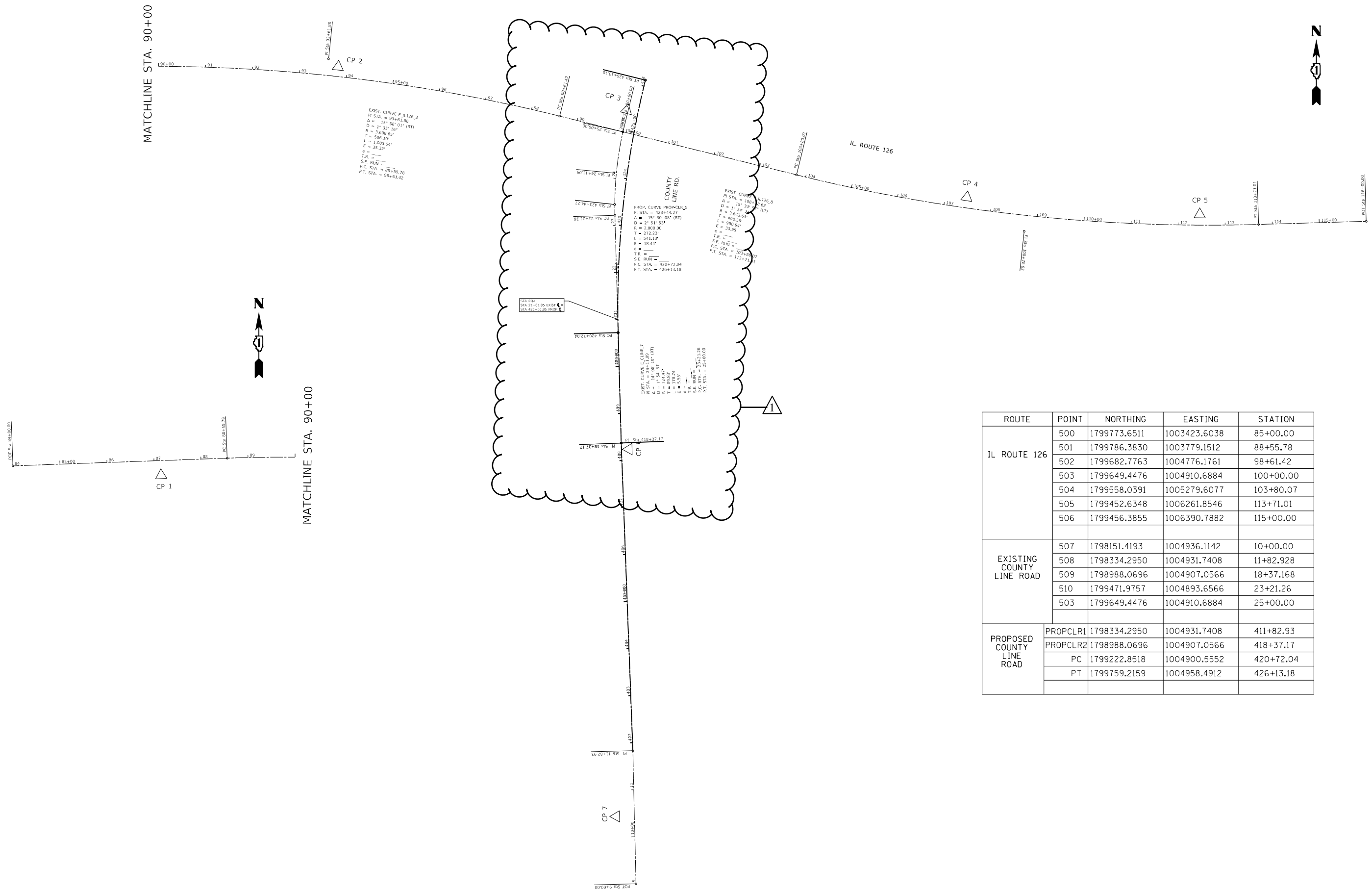
SCALE: SHEET NO. 5 OF 5 SHEETS STA. TO STA.

F.A.U. RTE.	SECTION	COUNTY	TOTAL SHEETS	SHEET NO.
379	119CH&TS	WILL/KENDALL	61	8
CONTRACT NO. 62G10			REV-SEP	

FED. ROAD DIST. NO. 1 | ILLINOIS | FED. AID PROJECT

* SPECIALTY ITEM

MODEL: Default
 FILE: \\hills.illinois.gov\pwworkspace\dot\office\dot\dot\Projects\140313\140313-sht-cover.dgn



ROUTE	POINT	NORTHING	EASTING	STATION
IL ROUTE 126	500	1799773.6511	1003423.6038	85+00.00
	501	1799786.3830	1003779.1512	88+55.78
	502	1799682.7763	1004776.1761	98+61.42
	503	1799649.4476	1004910.6884	100+00.00
	504	1799558.0391	1005279.6077	103+80.07
	505	1799452.6348	1006261.8546	113+71.01
				115+00.00
EXISTING COUNTY LINE ROAD	507	1798151.4193	1004936.1142	10+00.00
	508	1798334.2950	1004931.7408	11+82.928
	509	1798988.0696	1004907.0566	18+37.168
	510	1799471.9757	1004893.6566	23+21.26
	503	1799649.4476	1004910.6884	25+00.00
PROPOSED COUNTY LINE ROAD	PROPCLR1	1798334.2950	1004931.7408	411+82.93
	PROPCLR2	1798988.0696	1004907.0566	418+37.17
	PC	1799222.8518	1004900.5552	420+72.04
	PT	1799759.2159	1004958.4912	426+13.18

1 REVISED SHEET 7/16/2021

USER NAME = rothjp	DESIGNED -	REVISED -
	DRAWN -	REVISED -
PLOT SCALE = 200.0000' / in.	CHECKED -	REVISED -
PLOT DATE = 7/16/2021	DATE -	REVISED -

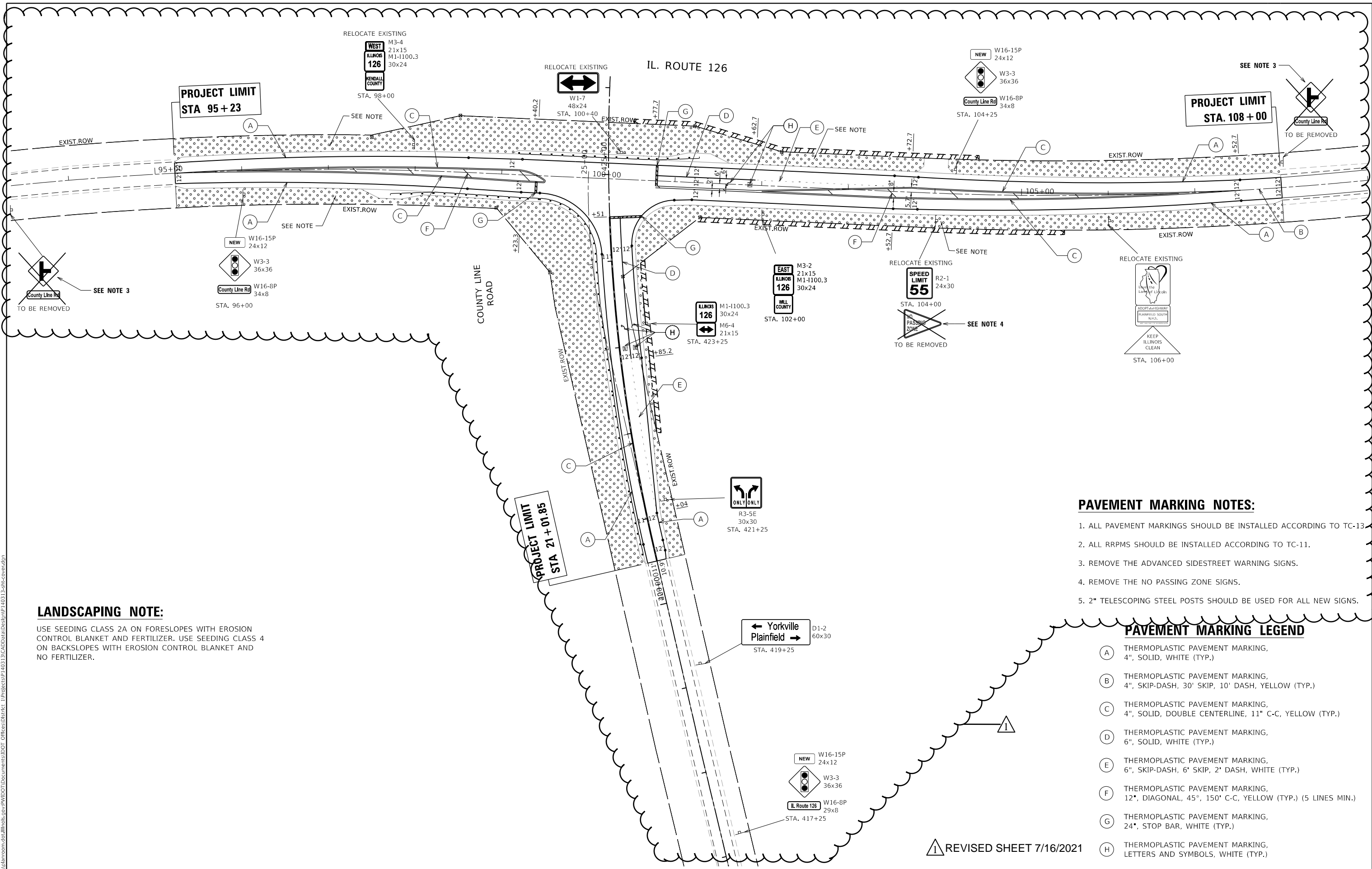
**STATE OF ILLINOIS
 DEPARTMENT OF TRANSPORTATION**

**ALIGNMENT, TIES AND BENCHMARKS
 IL ROUTE 126 AT COUNTY LINE ROAD**

SCALE: 1"=50' SHEET OF SHEETS STA. TO STA.

F.A.U. RTE.	SECTION	COUNTY	TOTAL SHEETS	SHEET NO.
0379	119CH&TS	WILL/KENDALL	61	13
CONTRACT NO. 62G10				
ILLINOIS FED. AID PROJECT				

MODEL: Default
 FILE: W:\shtcov\p140313-sht-cover.dgn
 PROJECT: P140313-CH&TS
 OFFICE: DISTRICT 1
 USER: rothjp



LANDSCAPING NOTE:
 USE SEEDING CLASS 2A ON FORESLOPES WITH EROSION CONTROL BLANKET AND FERTILIZER. USE SEEDING CLASS 4 ON BACKSLOPES WITH EROSION CONTROL BLANKET AND NO FERTILIZER.

- PAVEMENT MARKING NOTES:**
- ALL PAVEMENT MARKINGS SHOULD BE INSTALLED ACCORDING TO TC-13.
 - ALL RPPMS SHOULD BE INSTALLED ACCORDING TO TC-11.
 - REMOVE THE ADVANCED SIDESTREET WARNING SIGNS.
 - REMOVE THE NO PASSING ZONE SIGNS.
 - 2" TELESCOPING STEEL POSTS SHOULD BE USED FOR ALL NEW SIGNS.

- PAVEMENT MARKING LEGEND**
- A THERMOPLASTIC PAVEMENT MARKING, 4", SOLID, WHITE (TYP.)
 - B THERMOPLASTIC PAVEMENT MARKING, 4", SKIP-DASH, 30' SKIP, 10' DASH, YELLOW (TYP.)
 - C THERMOPLASTIC PAVEMENT MARKING, 4", SOLID, DOUBLE CENTERLINE, 11" C-C, YELLOW (TYP.)
 - D THERMOPLASTIC PAVEMENT MARKING, 6", SOLID, WHITE (TYP.)
 - E THERMOPLASTIC PAVEMENT MARKING, 6", SKIP-DASH, 6' SKIP, 2' DASH, WHITE (TYP.)
 - F THERMOPLASTIC PAVEMENT MARKING, 12", DIAGONAL, 45°, 150' C-C, YELLOW (TYP.) (5 LINES MIN.)
 - G THERMOPLASTIC PAVEMENT MARKING, 24", STOP BAR, WHITE (TYP.)
 - H THERMOPLASTIC PAVEMENT MARKING, LETTERS AND SYMBOLS, WHITE (TYP.)

USER NAME = rothjp	DESIGNED -	REVISED -
	DRAWN -	REVISED -
PLOT SCALE = 100,0000' / in.	CHECKED -	REVISED -
PLOT DATE = 7/15/2021	DATE -	REVISED -

**STATE OF ILLINOIS
 DEPARTMENT OF TRANSPORTATION**

PAVEMENT MARKING & LANDSCAPING PLAN		
IL. ROUTE 126 AT COUNTY LINE ROAD		
SCALE: 1"=50'	SHEET OF SHEETS	STA. TO STA.

F.A.U. RTE. 0379	SECTION 119CH&TS	COUNTY WILL/KENDALL	TOTAL SHEETS 61	SHEET NO. 29
			CONTRACT NO. 62G10	
		ILLINOIS FED. AID PROJECT		