

07-30-2021 LETTING ITEM 017

STATE OF ILLINOIS
DEPARTMENT OF TRANSPORTATION

F.A.I. RTE.	SECTION	COUNTY	TOTAL SHEETS	SHEET NO.
80	(81-1WS)M-4	ROCK ISLAND	16	1
		ILLINOIS	CONTRACT NO. 64M00	

FOR INDEX OF SHEETS, SEE SHEET NO. 2
FOR LIST OF ILLINOIS DOT HIGHWAY STANDARDS, SEE SHEET NO. 2

PROPOSED HIGHWAY PLANS

FAI ROUTE 80 (I-80)
SECTION (81-1WS)M-4
PROJECT NHPP-XR2K(107)
REPLACEMENT OF WB I-80 SCALE AND
PAVEMENT PATCHING AT EB AND WB RAMPS
ROCK ISLAND COUNTY

THE UPCHURCH GROUP, INC.
STANLEY J. FEARDAY, P.E.
LICENSE EXPIRES 11-30-2021

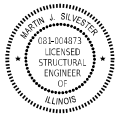


Stanley J. Fearday
DATE: APRIL 15, 2021

SIGNATURE AND SEAL
APPLY TO DRAWINGS
1-9

EXPIRATION DATE: 11-30-2021

THE UPCHURCH GROUP, INC.
MARTIN J. SILVESTER, P.E. S.E.
LICENSE EXPIRES 11-30-2022

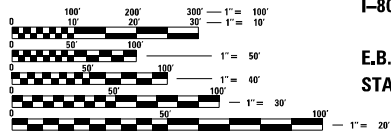


Martin J. Silvester
DATE: APRIL 15, 2021

SIGNATURE AND SEAL
APPLY TO DRAWINGS
10-16

EXPIRATION DATE: 11-30-2022

HAMPTON TOWNSHIP SECTION (11,14)



FULL SIZE PLANS HAVE BEEN PREPARED USING STANDARD ENGINEERING SCALES. REDUCED SIZED PLANS WILL NOT CONFORM TO STANDARD SCALES. IN MAKING MEASUREMENTS ON REDUCED PLANS, THE ABOVE SCALES MAY BE USED.

J.U.L.I.E.
JOINT UTILITY LOCATION INFORMATION FOR EXCAVATORS
1-800-892-0123
OR 811

PROJECT ENGINEER: ANDREW LEE
PROJECT MANAGER: JOEL VIYEGBE (815)-284-5506
EMAIL: Joel.Viyegbe@illinois.gov
CONTRACT NO. 64M00

W.B. IMPROVEMENT BEGINS
STA. 108 + 85

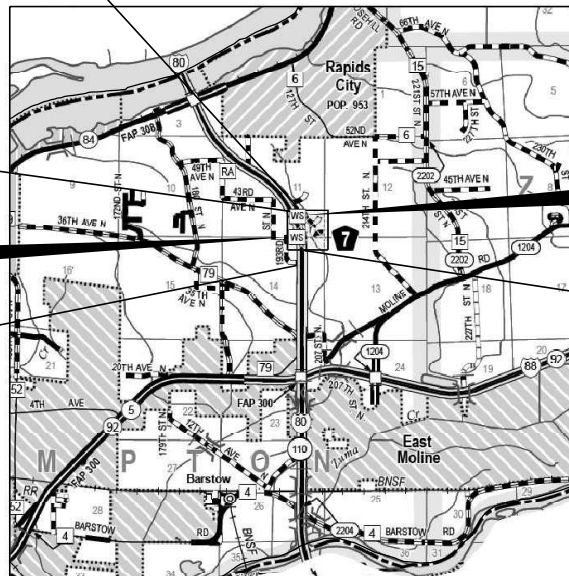
E.B. IMPROVEMENT BEGINS
STA. 130 + 36

PROJECT LOCATION
I-80 E.B. WEIGH STATION

E.B. IMPROVEMENT ENDS
STA. 164 + 52

C-92-020-17

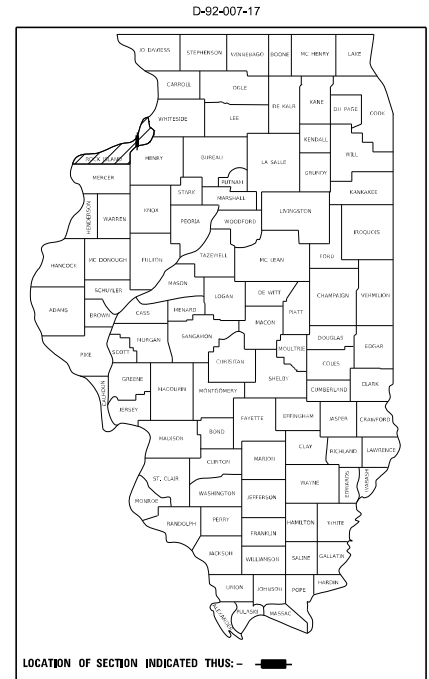
R 1 E



PROJECT LOCATION
I-80 W.B. WEIGH STATION

W.B. IMPROVEMENT ENDS
STA. 153 + 44

E.B. GROSS LENGTH = 3,416 FT. = 0.647 MILE
E.B. NET LENGTH = 3,416 FT. = 0.647 MILE
W.B. GROSS LENGTH = 4,459 FT. = 0.845 MILE
W.B. NET LENGTH = 4,459 FT. = 0.845 MILE



STATE OF ILLINOIS
DEPARTMENT OF TRANSPORTATION

SUBMITTED 04-29, 2021

James Lee REGIONAL ENGINEER

June 25, 2021

Joel Viyegbe ENGINEER OF DESIGN AND ENVIRONMENT

June 25, 2021

James Lee DIRECTOR OF HIGHWAYS PROJECT IMPLEMENTATION

PRINTED BY THE AUTHORITY
OF THE STATE OF ILLINOIS

CODE NO.	ITEM	UNIT	TOTAL QUANTITY	URBAN	
				CONSTRUCTION CODE	CONSTRUCTION CODE
				90% FED 10% STATE I-80 WB WEIGH STATION	90% FED 10% STATE I-80 EB WEIGH STATION
30300001	AGGREGATE SUBGRADE IMPROVEMENT	CU YD	110	52	58
42400200	PORTLAND CEMENT CONCRETE SIDEWALK 5 INCH	SQ FT	685	685	
44000600	SIDEWALK REMOVAL	SQ FT	685	685	
44200050	WELDED WIRE REINFORCEMENT	SQ YD	3499	1719	1780
44200970	CLASS B PATCHES, TYPE II, 10 INCH	SQ YD	341	28	313
44200974	CLASS B PATCHES, TYPE III, 10 INCH	SQ YD	327	181	146
44200976	CLASS B PATCHES, TYPE IV, 10 INCH	SQ YD	3172	1538	1634
44201294	CLASS B PATCH - EXPANSION JOINT	FOOT	170	100	70
44201299	DOWEL BARS 1 1/2"	EACH	2128	840	1288
44213200	SAW CUTS	FOOT	10128	4389	5739
44213204	TIE BARS 3/4"	EACH	838	420	418
50101500	REMOVAL OF EXISTING SUPERSTRUCTURES	EACH	1	1	
50102400	CONCRETE REMOVAL	CU YD	16.5	16.5	
50300225	CONCRETE STRUCTURES	CU YD	17.1	17.1	

* SPECIALTY ITEM

The Upchurch Group
architects engineers surveyors

USER NAME = 56237
DESIGNED - SJF
DRAWN - SAE
CHECKED - MJS
DATE -
PLOT SCALE = 2,0000 1" = 100'
PLOT DATE = 1/30/2021

REVISOR -
REVISION -
REVISOR -
REVISION -

**STATE OF ILLINOIS
DEPARTMENT OF TRANSPORTATION**

**SUMMARY OF QUANTITIES
I-80 EB & WB WEIGH STATIONS**

F.A.I. SITE:	SECTION	COUNTY	TOTAL SHEETS	SHEET NO.
80	(81-1W5)M-4	ROCK ISLAND	16	3
ILLINOIS FED. AID PROJECT			CONTRACT NO. 64M00	

SCALE: SHEET OF SHEETS STA. TO STA.

CODE NO.	ITEM	UNIT	TOTAL QUANTITY	URBAN	
				CONSTRUCTION CODE	CONSTRUCTION CODE
				90% FED 10% STATE I-80 WB WEIGH STATION	90% FED 10% STATE I-80 EB WEIGH STATION
50300300	PROTECTIVE COAT	SQ YD	233	233	
50500405	FURNISHING AND ERECTING STRUCTURAL STEEL	POUND	1930	1930	
50800205	REINFORCEMENT BARS, EPOXY COATED	POUND	2110	2110	
58600101	GRANULAR BACKFILL FOR STRUCTURES	CU YD	26	26	
59000200	EPOXY CRACK INJECTION	FOOT	12	12	
60255500	MANHOLES TO BE ADJUSTED	EACH	1	1	
67000400	ENGINEER'S FIELD OFFICE, TYPE A	CAL MO	3	3	
67100100	MOBILIZATION	L SUM	1	0.5	0.5
* 78009004	MODIFIED URETHANE PAVEMENT MARKING - LINE 4"	FOOT	22290	11290	11000
X4403300	CONCRETE MEDIAN REMOVAL	SQ FT	566	566	
X6020084	MANHOLE, SPECIAL	EACH	1	1	
X6060714	CONCRETE MEDIAN (SPECIAL)	SQ FT	566	566	
X7010216	TRAFFIC CONTROL AND PROTECTION, (SPECIAL)	L SUM	1	0.5	0.5
* X7830070	GROOVING FOR RECESSED PAVEMENT MARKING 5"	FOOT	22290	11290	11000

* SPECIALTY ITEM

The Upchurch Group
 architects engineers surveyors
 175 North 18th Street
 Lincoln, NE 68503
 Phone: 402.478.1811
 Fax: 402.478.1812
 www.upchurchgroup.com

USER NAME = 58237
 DESIGNED - SJF
 DRAWN - SAE
 CHECKED - MJS
 DATE -
 PLOT SCALE = 2,0000" = 1'-0"
 PLOT DATE = 1/27/2021

DESIGNED - SJF
 DRAWN - SAE
 CHECKED - MJS
 DATE -

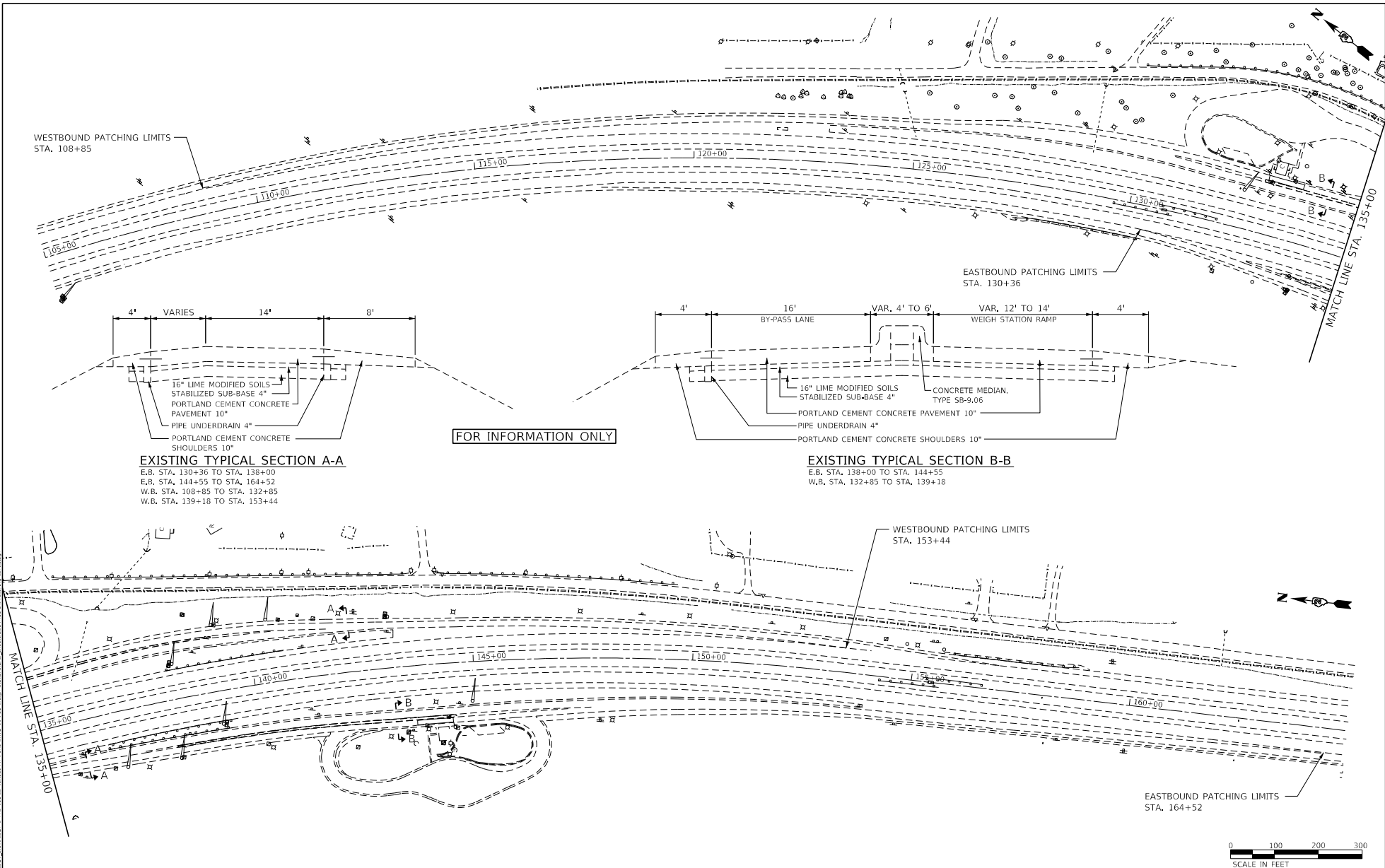
REVISED -
 REVISED -
 REVISED -
 REVISED -

**STATE OF ILLINOIS
 DEPARTMENT OF TRANSPORTATION**

**SUMMARY OF QUANTITIES
 I-80 EB & WB WEIGH STATIONS**

SCALE: SHEET OF SHEETS STA. TO STA.

F.A.I. SITE	SECTION	COUNTY	TOTAL SHEETS	SHEET NO.
80	(81-1W5)M-4	ROCK ISLAND	16	4
ILLINOIS FED. AID PROJECT			CONTRACT NO. 64M00	



EXISTING TYPICAL SECTION A-A
 E.B. STA. 130+36 TO STA. 138+00
 E.R. STA. 144+55 TO STA. 164+52
 W.B. STA. 108+85 TO STA. 132+85
 W.B. STA. 139+18 TO STA. 153+44

EXISTING TYPICAL SECTION B-B
 E.B. STA. 138+00 TO STA. 144+55
 W.B. STA. 132+85 TO STA. 139+18

FOR INFORMATION ONLY



The Upchurch Group
 architects engineers surveyors
 172 North 118 Street
 Moline, IL 61708
 309.793.7500
 www.upchurchgroup.com

USER NAME = 54236	DESIGNED - SJF	REVISED -
ARCHITECTS = SAE	DRAWN - SAE	REVISED -
ENGINEERS = MJS	CHECKED - MJS	REVISED -
DATE = 4/30/2021	DATE -	REVISED -

STATE OF ILLINOIS
DEPARTMENT OF TRANSPORTATION

EXHIBIT OF PATCHING LIMITS

SCALE: 200,0000' / SHEET OF SHEETS STA. TO STA.

F.A.D. SITE	SECTION	COUNTY	TOTAL SHEETS	SHEET NO.
80	(81-1W5)M-4	ROCK ISLAND	16	8
CONTRACT NO. 64M00				
ILLINOIS FED. AID PROJECT				

LOADING HS20-44

No future wearing surface allowed

DESIGN SPECIFICATIONS

2002 AASHTO w/ all applicable Interims

Illinois Department of Transportation Bridge Manual, January 2012

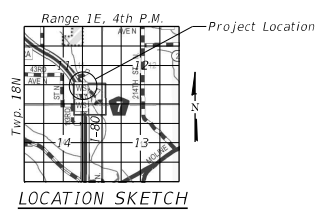
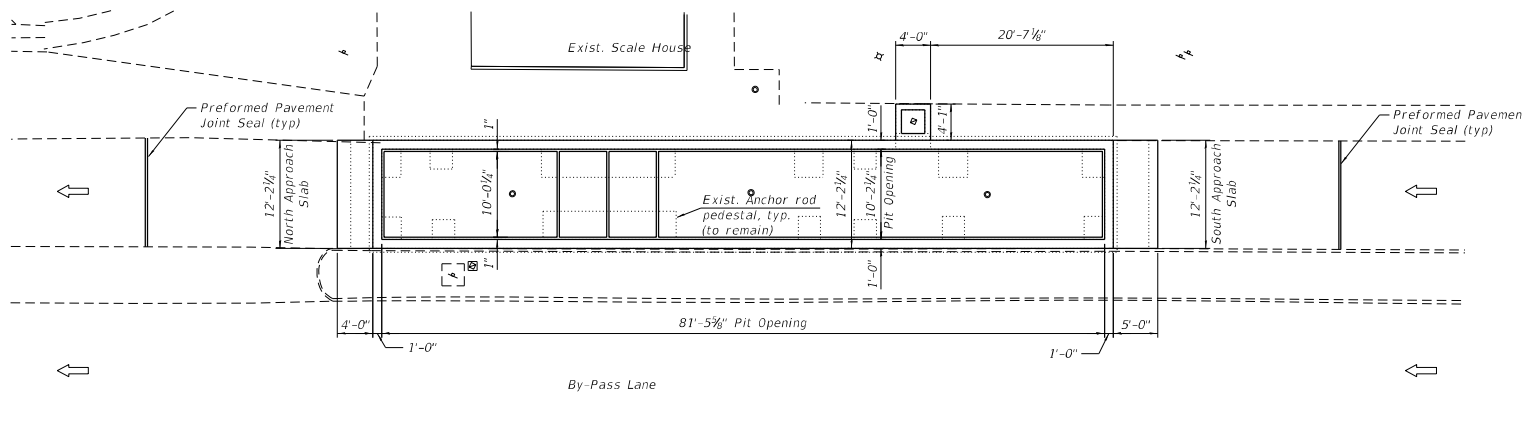
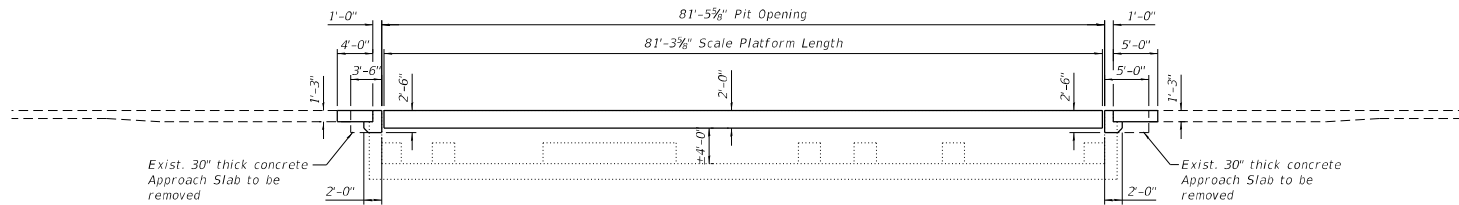
DESIGN STRESSES

FIELD UNITS (New Construction)

$f'_c = 4,000$ psi
 $f_y = 50,000$ psi (Structural Steel)
 $f_y = 60,000$ (Reinforcement)

FIELD UNITS (Existing Construction)

$f'_c = 4,000$ psi (footings and walls)
 $f'_c = 5,000$ psi (stairs and slabs)



Signed *M. J. Silvester*
 MARTIN J. SILVESTER, S.E. IL. LIC. NO. 081-004873
 EXPIRES 11-30-2022
 Date 04/14/2021

STATE OF ILLINOIS
DEPARTMENT OF TRANSPORTATION

GENERAL PLAN AND ELEVATION
I-80 WB WEIGH STATION

SHEET 8-1 OF 5 SHEETS

GENERAL PLAN AND ELEVATION
I-80 WESTBOUND WEIGH STATION
FAI 80
ROCK ISLAND COUNTY

The Upchurch Group
 architects engineers surveyors
 122 North 10th Street
 Peoria, IL 61603
 Phone: 309.244.1177
 Fax: 309.244.1177
 www.upchurchgroup.com

USER NAME	DESIGNED	REVISIONS
SIF	SIF	-
MJS	MJS	-
SAE	SAE	-
SIF	SIF	-

DESIGNED	REVISIONS
SIF	-
MJS	-
SAE	-
SIF	-

F.A.I. SITE	SECTION	COUNTY	TOTAL SHEETS	SHEET NO.
80	(B1-IWSIM-1)	ROCK ISLAND	16	10

CONTRACT NO.	CONTRACT NO.
64M00	64M00

INDEX OF SHEETS

- S-1 General Plan and Elevation
- S-2 General Notes, Index of Sheets and Total BOM
- S-3 Removal Details
- S-4 Repair details (Sheet 1 of 2)
- S-5 Repair details (Sheet 2 of 2)

GENERAL NOTES

1. All structural steel shall conform to AASHTO Classification M-270 Gr. 36, unless otherwise noted. All structural steel coping angles shall be galvanized after fabrication according to Article 520.03 of the Standard Specifications.
2. Plan dimensions and details relative to existing plans are subject to routine variations. The Contractor shall field verify existing dimensions and details affecting new construction and make necessary approved adjustments prior to construction or ordering of materials. Such variations shall not be cause for additional compensation for a change in scope of the work, however, the Contractor will be paid for the quantity actually furnished based upon the unit price bid for the work.
3. Reinforcement bars designated (E) shall be epoxy coated.
4. The existing structural steel coating contains lead. The Contractor shall take appropriate precautions to deal with the presence of lead on this project.
5. The cost of any structure excavation shall be included with Concrete Removal.
6. No field welding is permitted except as specified in the contract documents.
7. Prior to installation of the new scale components a Protective Coat shall be applied to all interior concrete surfaces of the pit.

**TOTAL BILL OF MATERIAL
WESTBOUND WEIGH STATION**

ITEM	UNIT	TOTAL
Removal of Existing Superstructures	Each	1
Concrete Removal	Cu Yd	16.5
Concrete Structures	Cu Yd	17.1
Protective Coat	Sq Yd	233
Furnishing and Erecting Structural Steel	Pound	1930
Reinforcement Bars, Epoxy Coated	Pound	2110
Granular Backfill for Structures	Cu Yd	26
Epoxy Crack Injection	Foot	12
Approach Slab Removal and Replacement	Sq Yd	12
Structural Repair of Concrete (Depth Equal to or Less Than 5 Inches)	Sq Ft	28.3
Furnishing and Installing Static Scale Components	L Sum	1

SCOPE OF WORK

1. Remove existing concrete deck platform, the steel beam support structure and the weight scales.
2. Remove and replace 2'-6" depth of the north and south approach pit backwalls.
3. Remove and replace the top 2'-0" of the east and west pit walls.
4. Remove and replace the lintel above the access on the east wall.
5. Remove and replace a portion of the north and south approach slabs.
6. Install new concrete deck platform, steel beam support structure and the new scale components.

MODEL: D:\p\p\11_1850_Weigh_Station\CAD_Sheets\Drawings\11-1850-Weigh-Station.dwg
 FILE NAME: 11-1850_Weigh_Station\CAD_Sheets\Drawings\11-1850-Weigh-Station.dwg
 4/19/2021 12:47:04 PM

The Upchurch Group
 architects engineers surveyors
 122 North 18th Street
 Normal, IL 61708
 Phone: 309.253.1111
 Fax: 309.253.1112
 www.upchurchgroup.com

USER NAME	DESIGNED - SIF	REVISION
architects	CHECKED - MJS	REVISION
engineers	DRAWN - SAE	REVISION
surveyors	CHECKED - SIF	REVISION
PLOT SCALE		
PLOT DATE		

**STATE OF ILLINOIS
DEPARTMENT OF TRANSPORTATION**

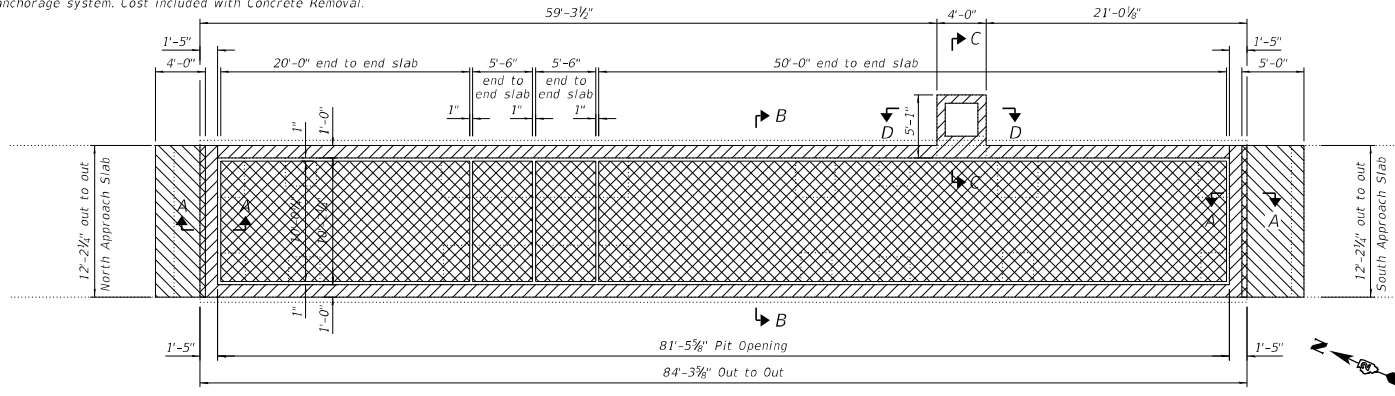
**GENERAL NOTES, INDEX OF SHEETS AND TOTAL BOM
I-80 WB WEIGH STATION**

SHEET S-2 OF 5 SHEETS

F.A.D. SITE	SECTION	COUNTY	TOTAL SHEETS	SHEET NO.
80	(B)-IWSM-1	ROCK ISLAND	16	11
CONTRACT NO. 64M00				
ILLINOIS FED. AID PROJECT				

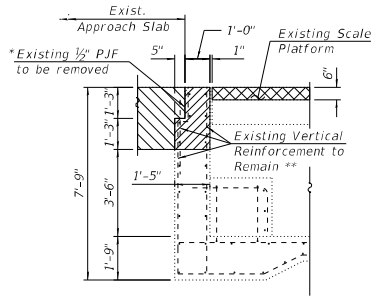
NOTES:

1. Dimensions shown have been taken from historical design drawings, field measurements, and survey data and may not represent "as built" conditions. The Contractor must verify all dimensions in the field. Variations in the field dimensions shall not be cause for additional compensation for change in scope of the work, however, the Contractor will be paid for the quantity actually furnished at the unit price bid for the work.
2. The Contractor shall field verify exact location of all existing utilities prior to construction and take precautions not to damage existing utilities during excavations, construction or other underground work. Any such damage shall be repaired by the Contractor at no additional cost.
3. Existing reinforcement shall be cleaned and incorporated into the new construction. Any reinforcement bars that are damaged during concrete removal shall be replaced with an approved bar splicer or anchorage system. Cost included with Concrete Removal.



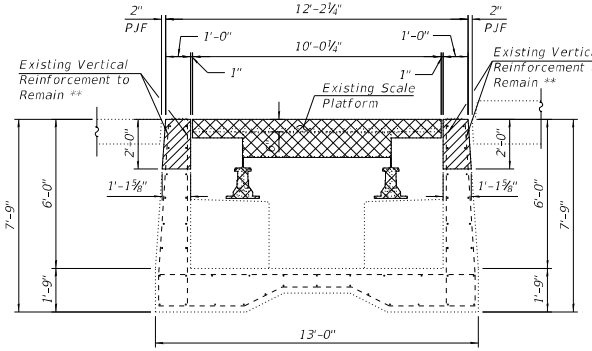
PLAN

* Cost of removal of PJF included in Concrete Removal



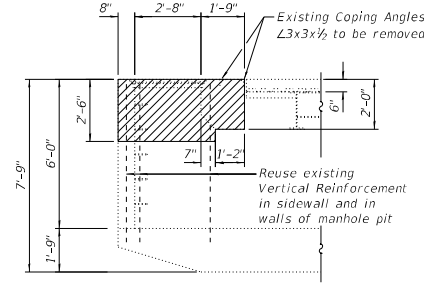
SECTION A-A

** #5 bars @ 12" cts outside face
** #5 bars @ 12" cts inside face

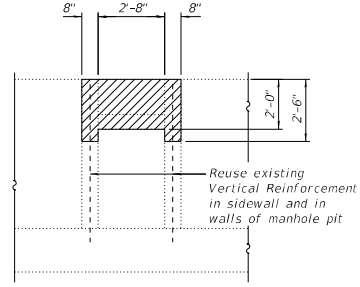


SECTION B-B

** #5 bars @ 12" cts outside face
** #5 bars @ 24" cts inside face



SECTION C-C



VIEW D-D

BILL OF MATERIAL

ITEM	UNIT	QUANTITY
Removal of Exist. Superstructures	Each	1
Concrete Removal	Cu Yd	16.5
Approach Slab Removal & Replacement	Sq Yd	12

LEGEND

- Removal of Exist. Superstructures
- Concrete Removal
- Approach Slab Removal & Replacement

MODEL: Def:Rpt
 FILE NAME: P:\C\Illinois\DOT\2021\180_Weigh Station\CAD_Sheets\2021\180-Weigh Station\180-Weigh Station-4-Removal.dgn
 Produced by: JTB
 Date: 4/19/2021
 Scale: 1/8"=1'-0"
 User: jtb
 Title: 180-Weigh Station-4-Removal.dgn
 4/19/2021 12:48:09 PM

The Upchurch Group
 architects engineers surveyors
 121 North 1st Street
 Chicago, IL 60602
 Phone: 312.467.1111
 Fax: 312.467.1112
 www.upchurchgroup.com

USER NAME	DESIGNED	CHECKED	DRAWN	CHECKED
- SIF	- SIF	- MJS	- SAE	- SIF
-	-	-	-	-
-	-	-	-	-
-	-	-	-	-

**STATE OF ILLINOIS
 DEPARTMENT OF TRANSPORTATION**

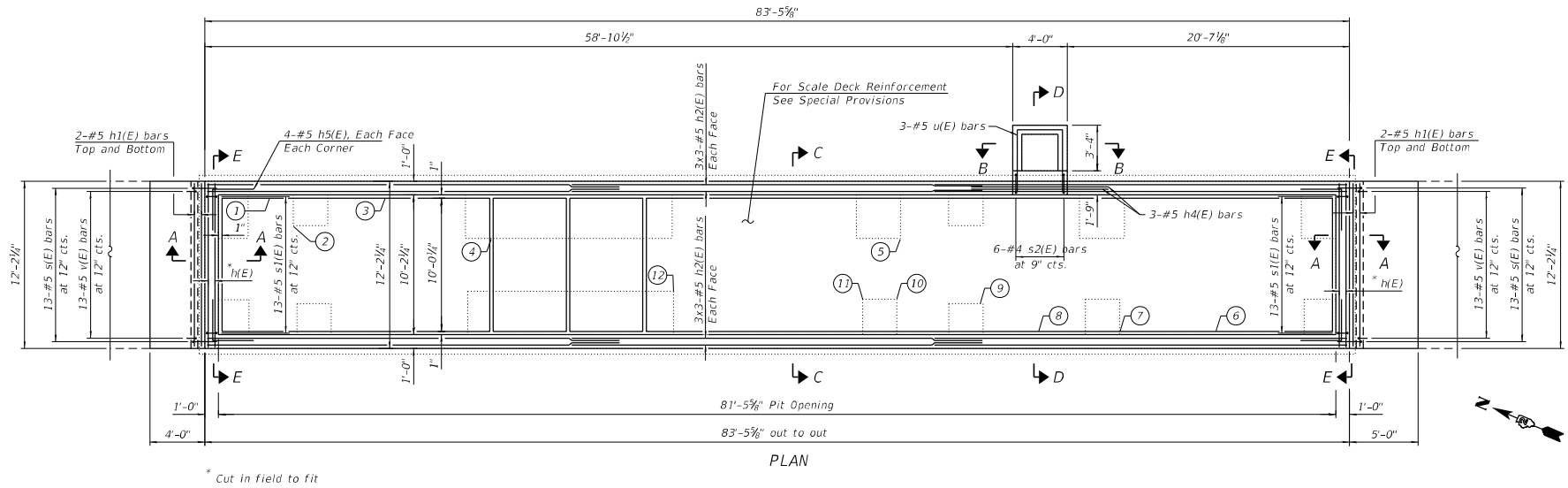
**REMOVAL DETAILS
 I-80 WB WEIGH STATION**

SHEET S-3 OF 5 SHEETS

F.A.B. SITE	SECTION	COUNTY	TOTAL SHEETS	SHEET NO.
80	(B1-IWSIM-1)	ROCK ISLAND	16	12
CONTRACT NO. 64M00				
ILLINOIS FED. AID PROJECT				

NOTES:

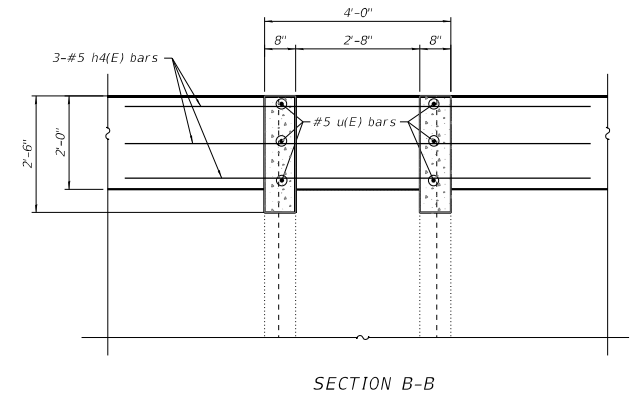
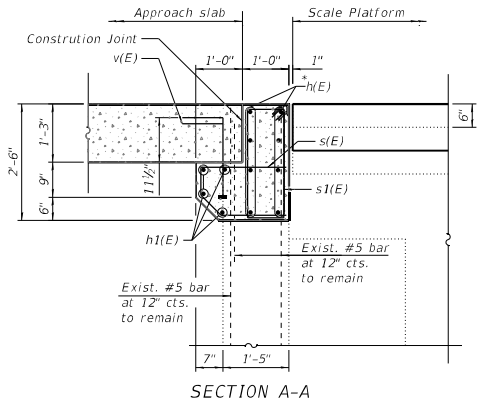
- For Sections C-C, D-D and E-E, bar diagrams, minimum bar laps, and Bill of Material, see Sheet S-5.
- Bars indicated thus 2x3-#5 etc. indicates 2 lines of bars with 3 lengths per line.



* Cut in field to fit

SCHEDULE OF CONCRETE REPAIR - WEST BOUND SCALE PIT			
Tag Number	Structural Repair of Concrete (Depth Equal to or Less Than 5 Inches)	Epoxy Crack Injection	Comments
	Sq Ft	Foot	
1	4		2' x 2'
2	1		1' x 1'
3	6		2' x 3'
4	2.25		1.5' x 1.5'
5	3		6" x 2' Each Face
6	3		1.5' x 2'
7	2		2' x 1.5'
8	6		1.5' x 4'
9	1		1' x 1'
10		4	
11		4	
12		4	
Totals	28.25	12	

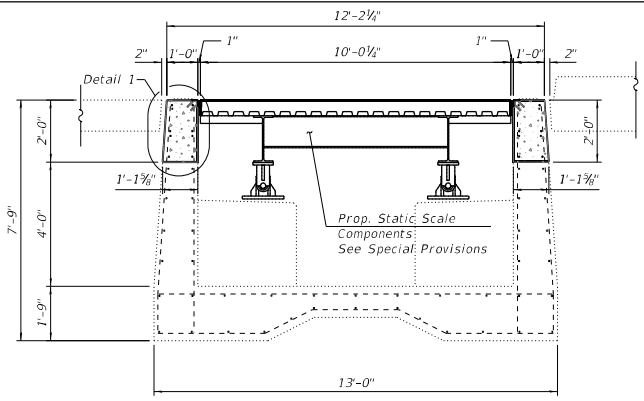
Note: Pit walls should be inspected for additional repairs required after removal of existing superstructure.



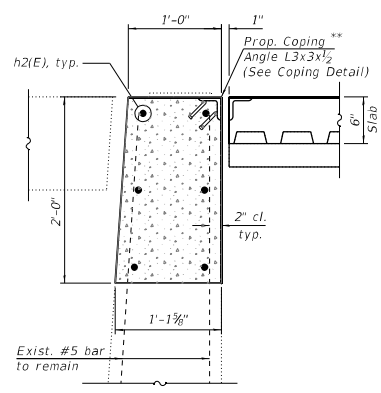
MODEL: Default
 FILE NAME: I:\C:\Bill_IDO_MSTRIDDOT_2_PFB_194022_variable PH 1 and BWO 11 I-80 Weigh Station\CAD_Sheets\Drawings-notes-4-Phg1plan.dwg
 4/19/2021 12:49:08 PM

The Upchurch Group architects engineers surveyors 123 North 10th Street Suite 200 Minneapolis, MN 55403 Tel: 612.339.1111 Fax: 612.339.1112 www.upchurchgroup.com	USER NAME: _____ DESIGNED: SIF CHECKED: MJS DRAWN: SAE CHECKED: SIF	REVISED: _____ REVISED: _____ REVISED: _____ REVISED: _____	STATE OF ILLINOIS DEPARTMENT OF TRANSPORTATION	REPAIR DETAILS (SHEET 1 OF 2) I-80 WB WEIGH STATION SHEET S-4 OF 5 SHEETS	F.A.A. SITE: 80 SECTION: (B1-IWSIM-1) COUNTY: ROCK ISLAND TOTAL SHEETS: 16 SHEET NO.: 13 CONTRACT NO. 64M00
	ILLINOIS FED. AID PROJECT				

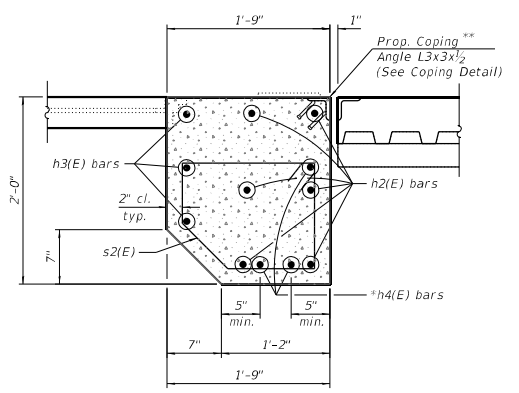
MODEL: Default
 FILE NAME: I:\C:\Bill_IDO_MSTRIDDOT_2_PFB_194022_variable PH 1 and BWO 11 I-80 Weigh Station\CAD_Sheets\Drawings\Notes-Schedule.dwg
 Produced by: archibald
 Project No: 194022
 Date: 11/19/2021
 User: archibald
 4/19/2021 12:50:26 PM



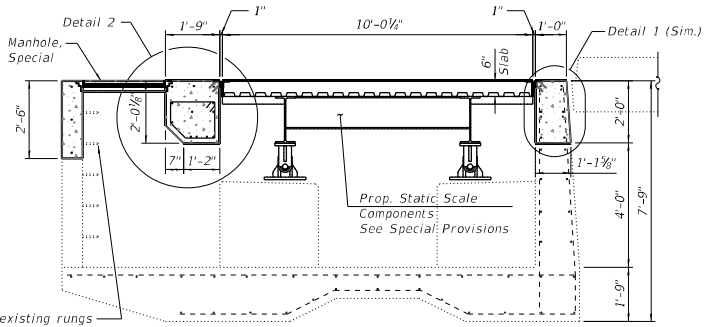
SECTION C-C



DETAIL 1

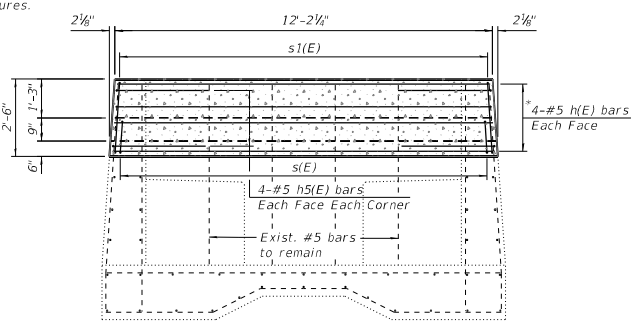


DETAIL 2



SECTION D-D

Top existing rungs shall be removed and reinstalled. Cost included with Concrete Structures.

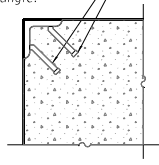


SECTION E-E

Coping not shown for clarity

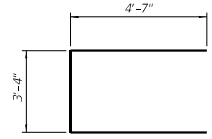
* Cut in field to fit

3/4" ϕ x 6" at 12" cts. (alternate). Granular or solid Flux filled headed studs conforming to Article 1006.32 of the Standard Specifications, automatically end welded to angle. Use 45° miter at corner intersection of angle.

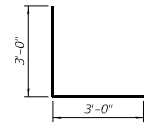


COPING DETAIL

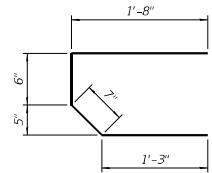
** Steel Coping shall be paid for as Furnishing and Erecting Structural Steel



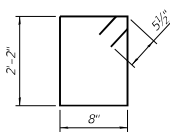
BAR u(E)



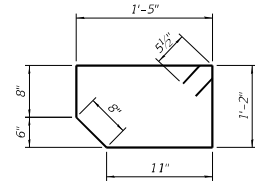
BAR h5(E)



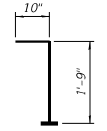
BAR s(E)



BAR s1(E)



BAR s2(E)



BAR v(E) (Headed)

BILL OF MATERIALS

Bar	No.	Size	Length	Shape
h(E)	16	#5	12'-2"	—
h1(E)	8	#5	11'-10"	—
h2(E)	36	#5	30'-1"	—
h3(E)	3	#5	3'-8"	—
h4(E)	3	#5	10'-0"	—
h5(E)	32	#5	6'-0"	L
s(E)	26	#5	4'-0"	—
s1(E)	26	#5	6'-7"	—
s2(E)	6	#5	5'-9"	—
u(E)	3	#5	12'-6"	—
v(E)	26	#5	2'-7"	—
Concrete Structures			Cu. Yd.	17.1
Furnishing and Erecting Structural Steel			Pound	1930
Reinforcement Bars, Epoxy Coated			Pound	2110

Note: Headed Bars shall conform to ASTM A970 with threaded attachment - Class HA, and reinforcement bars conforming to ASTM A706. Cost included with Reinforcement Bars, Epoxy Coated.

MINIMUM BAR LAP

#5 = 3'-6"

The Upchurch Group
 architects engineers surveyors
 122 North 1st Street
 Rock Island, IL 61201
 Phone: 309.399.1111
 Fax: 309.399.1117
 Email: upchurchgroup@upchurchgroup.com

USER NAME	DESIGNED	REVISIONS
—	— SIF	—
—	— MJS	—
—	— SAE	—
—	— SIF	—

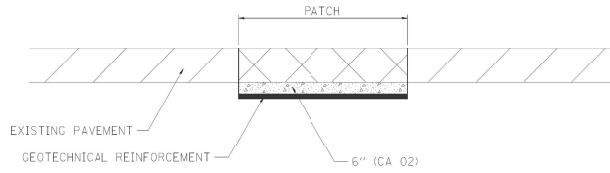
**STATE OF ILLINOIS
 DEPARTMENT OF TRANSPORTATION**

**REPAIR DETAILS (SHEET 2 OF 2)
 I-80 WB WEIGH STATION**

SHEET 8-6 OF 5 SHEETS

F.A.B. SITE	SECTION	COUNTY	TOTAL SHEETS	SHEET NO.
80	(B1-IWSIM-1)	ROCK ISLAND	16	14
			CONTRACT NO. 64M00	
			ILLINOIS FED. AID PROJECT	

SUBGRADE REPLACEMENT



NOTES:
 THE CA 02 SHALL BE COMPACTED IN A MANNER APPROVED BY THE ENGINEER, IF THE MOISTURE CONTENT OF THE MATERIAL IS SUCH THAT COMPACTION SATISFACTORY TO THE ENGINEER CANNOT BE OBTAINED, SUFFICIENT WATER SHALL BE ADDED SO THAT SATISFACTORY COMPACTION CAN BE OBTAINED.
 THE CA 02 SHALL BE PAID FOR AT THE CONTRACT UNIT PRICE PER CU YD FOR AGGREGATE SUBGRADE IMPROVEMENT WHICH SHALL ALSO INCLUDE ALL EARTH EXCAVATION.
 THE GEO TECHNICAL REINFORCEMENT WILL BE PAID FOR AT THE CONTRACT UNIT PRICE PER 50 YD FOR GEO TECHNICAL REINFORCEMENT.
 ALL DIMENSIONS ARE IN INCHES UNLESS OTHERWISE NOTED.

PLOT DATE = 4/17/2018

REVISED - 3-13-13	REGION 2 / DISTRICT 2 STANDARD	F.A. RTE.	SECTION	COUNTY	TOTAL SHEETS	SHEET NO.
REVISED -						
REVISED -						
REVISED -	SCALE: 1/2" = 1' ±	SHEET NO.	OF	SHEETS	STA.	TO STA.
						FED. ROAD DIST. NO. ILLINOIS FED. AID PROJECT
						CONTRACT NO.

SUBGRADE REPLACEMENT 97.4

MODEL: D:\work\111001\111001.dwg
 FILE: 111001.dwg
 USER: JIMMIE
 DATE: 4/17/2018 11:40:00 AM
 PLOT: 4/17/2018 11:40:00 AM
 PLOT SCALE: 1/2" = 1' ±
 PLOT DATE: 4/17/2018

The Upchurch Group
 architects engineers surveyors
 125 North 18th Street
 Moline, IL 61704
 Phone: 309.344.1111
 Fax: 309.344.1112
 www.upchurchgroup.com

USER NAME = 56237
 DESIGNED - SJF
 DRAWN - SAE
 CHECKED - MJS
 DATE -
 PLOT SCALE = 2.0000' / 1" ±
 PLOT DATE = 4/28/2013

REVISED -
 REVISED -
 REVISED -
 REVISED -

**STATE OF ILLINOIS
 DEPARTMENT OF TRANSPORTATION**

REGION 2 / DISTRICT 2 STANDARD

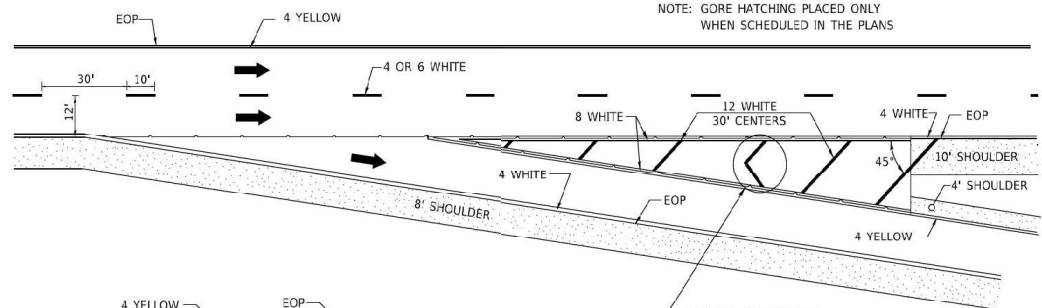
F.A. RTE.	SECTION	COUNTY	TOTAL SHEETS	SHEET NO.
80	(81-1W5)M-4	ROCK ISLAND	16	13
			CONTRACT NO. 64M00	
		ILLINOIS	FED. AID PROJECT	

SCALE: SHEET OF SHEETS STA. TO STA.

PAINTING DETAILS

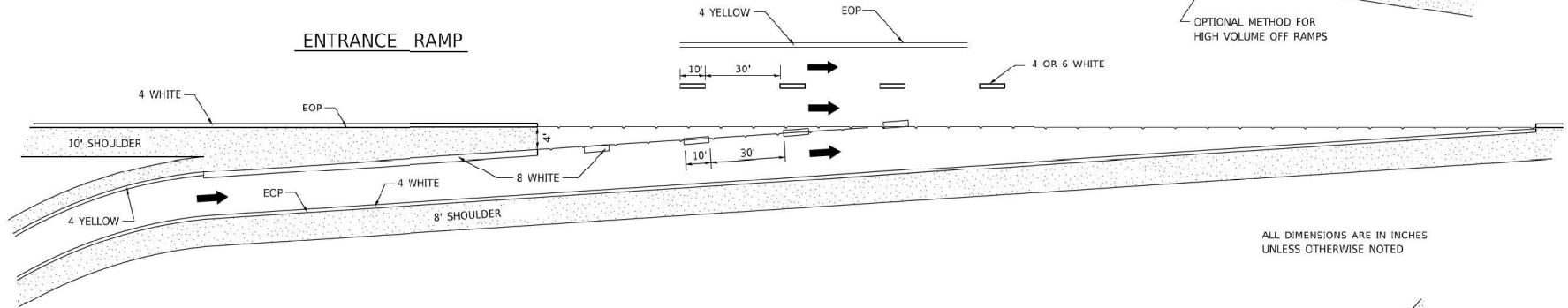
CENTERLINE SKIP DASH PAVEMENT MARKING WIDTH SHALL BE 4" WHEN THE POSTED SPEED LIMIT IS UNDER 40 MPH AND 6" WHEN THE POSTED SPEED LIMIT IS 40 MPH AND OVER.

EXIT RAMP



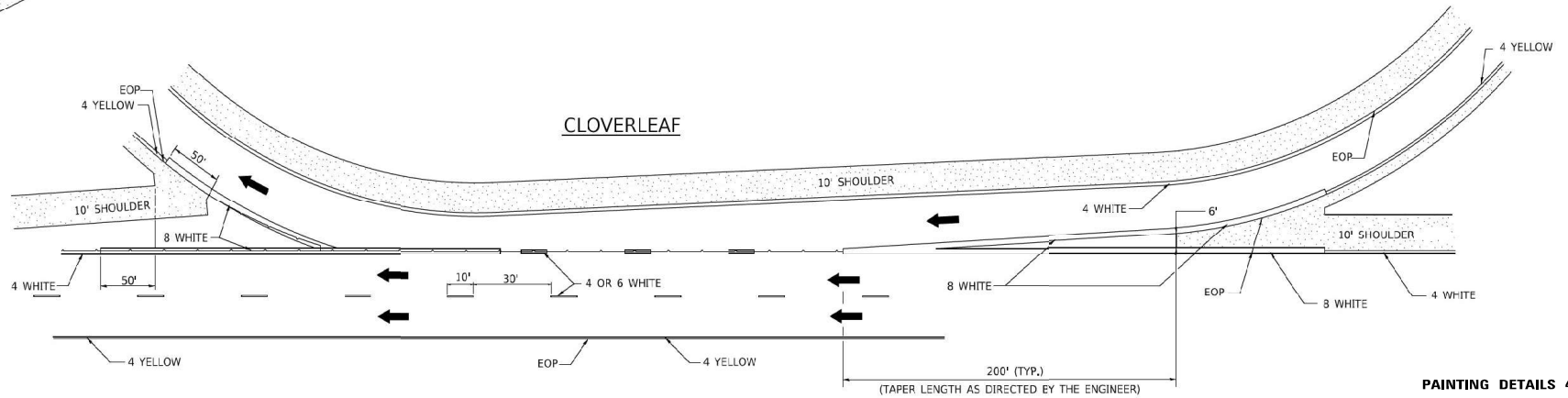
NOTE: GORE HATCHING PLACED ONLY WHEN SCHEDULED IN THE PLANS

ENTRANCE RAMP



ALL DIMENSIONS ARE IN INCHES UNLESS OTHERWISE NOTED.

CLOVERLEAF



PAINTING DETAILS 44.1

The Upchurch Group
architects engineers surveyors
125 North 18th Street
Peoria, Illinois 61603
Phone: 309.696.4444
Fax: 309.696.4444
www.upchurchgroup.com

USER NAME = 5k237	DESIGNED - SJF	REVISED -
DRAWN - SAE	REVISOR -	
CHECKED - MJS	REVISOR -	
DATE - 1/28/2013	REVISOR -	

**STATE OF ILLINOIS
DEPARTMENT OF TRANSPORTATION**

REGION 2 / DISTRICT 2 STANDARD

SCALE: SHEET OF SHEETS STA. TO STA.

F.A.L. SITE: 80	SECTION: (81-1W5)M-4	COUNTY: ROCK ISLAND	TOTAL SHEETS: 16	SHEET NO.: 16
CONTRACT NO. 64M00				
ILLINOIS FED. AID PROJECT				

MODEL: D:\work\64M00\64M00.dwg, USER: JHOD, DATE: 1/28/2013, TIME: 10:40:00, PLOT SCALE: 1/8"=1'-0", PLOT DATE: 1/28/2013, PLOT TIME: 10:40:00