

07-30-2021 LETTING ITEM 031

STATE OF ILLINOIS  
DEPARTMENT OF TRANSPORTATION

F.A.P. RT.#	SECTION	COUNTY	TOTAL SHEETS	SHEET NO.
546	[(104B)BR]BJR	WARREN	29	1
		ILLINOIS	CONTRACT NO. 68F71	

INDEX OF SHEETS

1. COVER SHEET
2. GENERAL NOTES
- 3-5. SUMMARY OF QUANTITIES
6. TYPICAL SECTIONS
7. LINE DIAGRAM
8. SCHEDULES OF QUANTITIES
- 9-24. BRIDGE REPAIR PLANS
25. EROSION CONTROL DETAIL
- 26-27. GUARDRAIL REPLACEMENT DETAIL
- 28-29. DISTRICT STANDARD

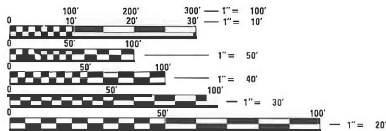
HIGHWAY STANDARDS

000001-08	701001-02
001001-02	701006-05
001006	701011-04
420001-09	701106-02
630301-09	701301-04
631006-08	
631032-09	
701201-05	
701321-18	
701901-08	
704001-08	

FUNCTIONAL CLASSIFICATION

MINOR ARTERIAL  
2019 ADT: 1150

PV: 86.95% SU: 5.22% MU: 7.83%



FULL SIZE PLANS HAVE BEEN PREPARED USING STANDARD ENGINEERING SCALES. REDUCED SIZED PLANS WILL NOT CONFORM TO STANDARD SCALES. IN MAKING MEASUREMENTS ON REDUCED PLANS, THE ABOVE SCALES MAY BE USED.

J.U.L.I.E.  
JOINT UTILITY LOCATION INFORMATION FOR EXCAVATORS  
1-800-892-0123  
OR 811

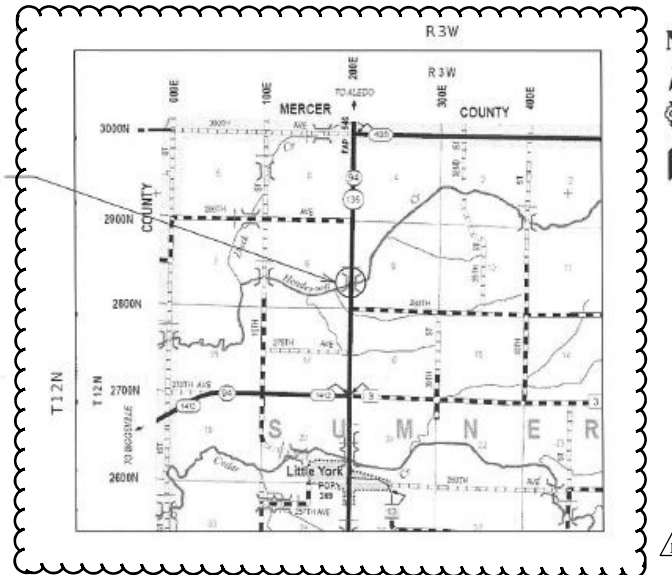
PROJECT ENGINEER: NICOLE FAYANT (309)671-3454  
PROJECT MANAGER: TRAVIS WALLENFANG/ARLENE OTERO-FEBUS (309)671-3474  
CATALOG NO. 036073-00D  
CONTRACT NO. 68F71

PROPOSED  
HIGHWAY PLANS

FAP ROUTE 546 (IL 94/IL135)  
SECTION [(104B)BR]BJR  
PROJECT STP-GF9F(470)  
BRIDGE JOINT REPLACE/REPAIR  
WARREN COUNTY

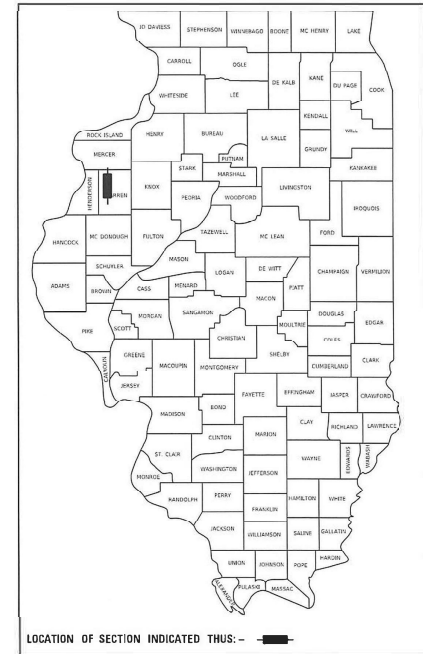
C-94-094-20

SN 094-0016  
IL 94 /IL 135 OVER  
HENDERSON CREEK  
STA 99 + 05.91 TO  
STA 102 + 03.06



GROSS LENGTH = 760 FT. = 0.15 MILE  
NET LENGTH = 760 FT. = 0.15 MILE

D-94-062-20



DESCRIPTION OF WORK:

THIS PROJECT CONSISTS OF BRIDGE JOINT REPLACE/REPAIR, BEARING REPLACEMENT AND STRUCTURAL REPAIRS TO THE CONCRETE SUBSTRUCTURE AT SN 094-0016 CARRYING IL 94/ IL 135 OVER HENDERSON CREEK, 2 MILES NORTH OF LITTLE YORK.

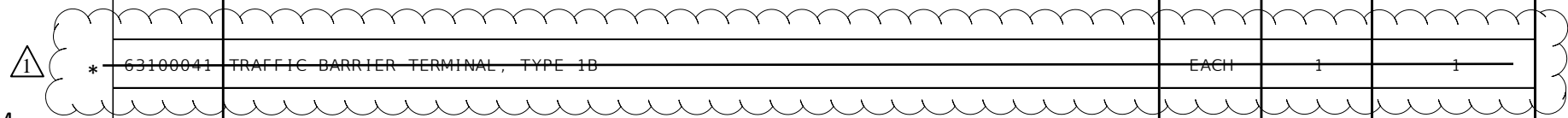
STATE OF ILLINOIS  
DEPARTMENT OF TRANSPORTATION

SUBMITTED May 07 20 21  
Kenneth A. Barnett P.E. REGIONAL ENGINEER  
June 25, 2021  
Joe E. A. Elk  
June 25, 2021  
James J. Quinn  
DIRECTOR OF HIGHWAYS PROJECT IMPLEMENTATION

PRINTED BY THE AUTHORITY  
OF THE STATE OF ILLINOIS

CODE NO.	ITEM	UNIT	TOTAL QUANTITY	CONSTR. CODE	
				80% FEDERAL 20% STATE	
				BRIDGE	
				0047	094-0016
28100225	STONE RIPRAP, CLASS B3	TON	20	20	
50102400	CONCRETE REMOVAL	CU YD	14.6	14.6	
50300255	CONCRETE SUPERSTRUCTURE	CU YD	14.5	14.5	
50500405	FURNISHING AND ERECTING STRUCTURAL STEEL	POUND	2750	2750	
50800205	REINFORCEMENT BARS, EPOXY COATED	POUND	2760	2760	
50800515	BAR SPLICERS	EACH	48	48	
52000110	PREFORMED JOINT STRIP SEAL	FOOT	102	102	
52100010	ELASTOMERIC BEARING ASSEMBLY, TYPE I	EACH	16	16	
52100520	ANCHOR BOLTS, 1"	EACH	32	32	
59000200	EPOXY CRACK INJECTION	FOOT	70	70	
59300100	CONTROLLED LOW-STRENGTH MATERIAL	CU YD	11	11	
* 63000001	STEEL PLATE BEAM GUARDRAIL, TYPE A, 6 FOOT POSTS	FOOT	475	475	
* 63100041	TRAFFIC BARRIER TERMINAL, TYPE 1B	EACH	1	1	

\*= SPECIALTY ITEM



MODEL: Default  
 FILE NAME: p:\pub\barcom.dwt  
 ILLINOIS DOT Documents\DOT Offices\District 4\Projects\DA\_68F71\CADD\Drawings\Sheets\DA\_68F71-sht-500.dwg

USER NAME = OTEROFEBUSA	DESIGNED -	REVISED -
	DRAWN -	REVISED -
PLOT SCALE = 100.0000' / in.	CHECKED -	REVISED -
PLOT DATE = 5/6/2021	DATE -	REVISED -

**STATE OF ILLINOIS  
DEPARTMENT OF TRANSPORTATION**

**SUMMARY OF QUANTITIES**

SCALE: SHEET 1 OF 3 SHEETS STA. TO STA.

F.A.P. RTE.	SECTION	COUNTY	TOTAL SHEETS	SHEET NO.
546	[(104B)BR]BR	WARREN	29	3
ILLINOIS FED. AID PROJECT			CONTRACT NO. 68F71	

CODE NO.	ITEM	UNIT	TOTAL QUANTITY	CONSTR. CODE	
				80% FEDERAL 20% STATE	
				BRIDGE	
				0047	094-0016
* 63100085	TRAFFIC BARRIER TERMINAL, TYPE 6	EACH	2	2	
* 63100089	TRAFFIC BARRIER TERMINAL, TYPE 6B	EACH	2	2	
* 63100167	TRAFFIC BARRIER TERMINAL, TYPE 1 (SPECIAL) TANGENT	EACH	4	4	
63200310	GUARDRAIL REMOVAL	FOOT	712.5	712.5	
67100100	MOBILIZATION	L SUM	1	1	
70100405	TRAFFIC CONTROL AND PROTECTION, STANDARD 701321	EACH	1	1	
70100450	TRAFFIC CONTROL AND PROTECTION, STANDARD 701201	L SUM	1	1	
70106500	TEMPORARY BRIDGE TRAFFIC SIGNALS	EACH	1	1	
70106700	TEMPORARY RUMBLE STRIPS	EACH	6	6	
70107005	PAVEMENT MARKING BLACKOUT TAPE, 5"	FOOT	2078	2078	
70107025	CHANGEABLE MESSAGE SIGN	CAL DA	14	14	
70300150	SHORT TERM PAVEMENT MARKING REMOVAL	SQ FT	866	866	
70400100	TEMPORARY CONCRETE BARRIER	FOOT	550	550	
70400200	RELOCATE TEMPORARY CONCRETE BARRIER	FOOT	550	550	

\* = SPECIALTY ITEM

MODEL: Default  
 FILE NAME: p:\pub\barcom.dwg  
 ILLINOIS STATE HIGHWAY DEPARTMENT  
 PROJECTS\DOT OFFICES\District 4\Projects\DA\_68F71\CADD\Drawings\Drawings\DA\_68F71-Sub-500.dwg

USER NAME = OTEROFEBUSA	DESIGNED -	REVISED -
PLOT SCALE = 100.0000' / in.	DRAWN -	REVISED -
PLOT DATE = 5/6/2021	CHECKED -	REVISED -
	DATE -	REVISED -

**STATE OF ILLINOIS  
DEPARTMENT OF TRANSPORTATION**

**SUMMARY OF QUANTITIES**

SCALE: SHEET 2 OF 3 SHEETS STA. TO STA.

F.A.P. RTE.	SECTION	COUNTY	TOTAL SHEETS	SHEET NO.
546	[(104B)BR]BR	WARREN	29	4
			CONTRACT NO. 68F71	
ILLINOIS FED. AID PROJECT				

TRAFFIC CONTROL & PROTECTION								
LOCATION	TC&P STANDARD 701201	TC&P STANDARD 701321	TEMPORARY CONCRETE BARRIER	RELOCATE TEMP CONC BARRIER	IMPACT ATTN TEMP NRD TL3	IMPACT ATTENUATOR REL NRD TL3	TEMP BR TRAFFIC SIGNALS	TEMP RUMBLE STRIPS
	L SUM	EACH	FOOT	FOOT	EACH	EACH	EACH	EACH
IL 94 / IL 135	1	1	550	550	2	2	1	6

MOBILIZATION	
LOCATION	L SUM
JOBSITE	1

CHANGEABLE MESSAGE SIGN	
LOCATION	CAL DAYS
JOBSITE	14

\*TWO SIGNS @ 7 DAYS EACH

GUARDRAIL SCHEDULE													
LOCATION	SIDE	LENGTH	LENGTH OF NEED	GUARDRAIL REM	TBT TYP 6	TBT TYP 6B	SPBG TYPE A, 6 FT POSTS	TBT TYPE 1 (SPL) TANGENT	GUARDRAIL AGG EROSION CONTROL	GUARDRAIL REFLECTORS, TYPE A	TERMINAL MARKER DIRECT APPLIED	LINEAR DELINEATOR PANELS 4 INCH	
		RT/LT	FOOT	FOOT	FOOT	EACH	EACH	FOOT	EACH	TON	EACH	EACH	EACH
STA 97+24 TO STA 98+87	LT	162.5	82	137.5		1	87.5	1	35	2	1	2	
STA 96+74 TO STA 98+87	RT	212.5	137	212.5		1	137.5	1	45	3	1	3	
STA 102+22 TO STA 103+84	RT	162.5	87.5	137.5	1		87.5	1	34.9	2	1	2	
STA 102+22 TO STA 104+47	LT	225.0	116	225.0	1		162.5	1	47.6	3	1	3	
TOTAL				712.5	2	2	475	4	163	10	4	10	



PAVEMENT MARKING SCHEDULE						
LOCATION	DESCRIPTION	LENGTH	BLACKOUT TAPE 5"	SHORT TERM PVMT MARKING REMOVAL	PAINT PVMT MARK 4"	
		FOOT	FOOT	SQ FT	WHITE FOOT	YELLOW FOOT
STA 96+01.7 TO STA 98+86.7	CL NO PASING ZONE	285	355	148		356
STA 98+86.7 TO STA 105+07.3	CENTERLINE	621	155	65		155
STA 96+49.8 TO STA 104+47.3	EDGE LINE (LT)	798	798	333	798	
STA 96+61.7 TO STA 104+30.2	EDGE LINE (RT)	769	769	320	769	
TOTAL			2078	866		2078

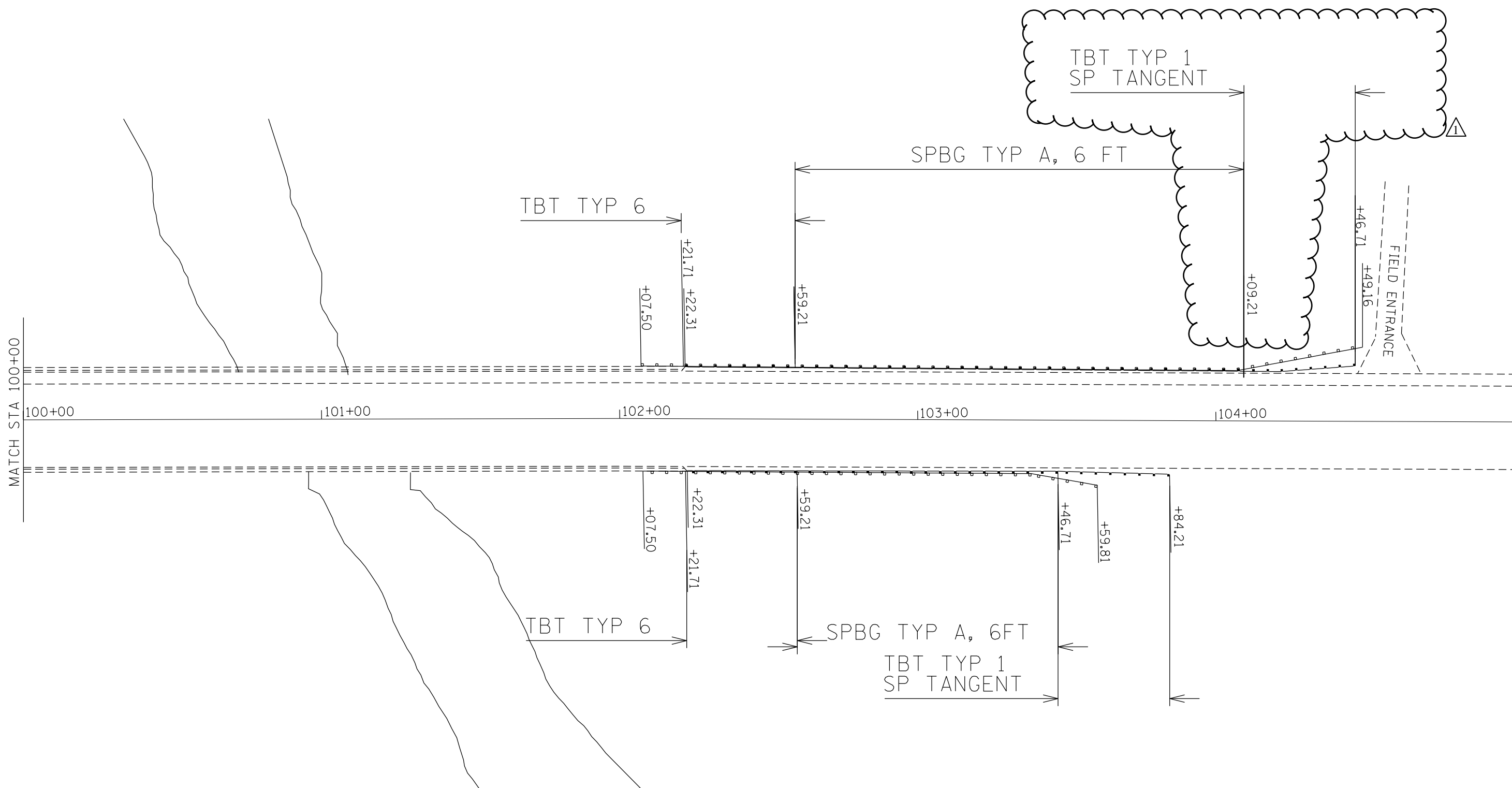
EROSION CONTROL			
LOCATION	AREA	STONE RIPRAP CL B3	FLOWABLE FILL
	SQ FT	TON	CU YD
NORTH ABUTMENT WEST	150	6	11
NORTH ABUTMENT WEST	188	7	
NORTH ABUTMENT EAST	188	7	
TOTAL		525	20

REVISED SHEET 7/12/2021

MODEL: Default  
FILE: \\nas101.pw.state.il.us\pub\rooms\dat\illinois\pwr\DOT\Documents\DOT\_Offices\Director\_of\Projects\IL\_68F71\CADD\Drawings\CAD\Sheets\DA\_68F71\_sht\_schedule.dgn

USER NAME = wallenfangt	DESIGNED -	REVISED -	<b>STATE OF ILLINOIS DEPARTMENT OF TRANSPORTATION</b>	<b>SCHEDULES OF QUANTITIES</b>		F.A.P. RTE.	SECTION	COUNTY	TOTAL SHEETS	SHEET NO.
PLOT SCALE = 100.0000' / in.	DRAWN -	REVISED -				546	[(104B)BR]BR	WARREN	29	8
PLOT DATE = 7/12/2021	CHECKED -	REVISED -		SCALE:		SHEET 1 OF 1 SHEETS		CONTRACT NO. 68F71		ILLINOIS FED. AID PROJECT
	DATE -	REVISED -				STA. TO STA.				

MODEL: Default  
 FILE: \\nrcs-pub\pub\rooms\dat\illinois\pwr\DOT\Documents\DOT\_Offices\District\_4\Projects\ID4\_68F71\CADD\Drawings\ID4\_68F71-guardrail.dgn



REVISOR'S MARK: REVISED SHEET 7/12/2021

USER NAME = wallenfangt	DESIGNED -	REVISED -
	DRAWN -	REVISED -
PLOT SCALE = 20.0000 ' / in.	CHECKED -	REVISED -
PLOT DATE = 7/12/2021	DATE -	REVISED -

**STATE OF ILLINOIS  
 DEPARTMENT OF TRANSPORTATION**

**GUARDRAIL REPLACEMENT DETAIL**

SCALE: SHEET 2 OF 2 SHEETS STA. TO STA.

F.A.P. RTE.	SECTION	COUNTY	TOTAL SHEETS	SHEET NO.
546	[[104B]BR]BJR	WARREN	29	27
CONTRACT NO. 68F71				
ILLINOIS FED. AID PROJECT				