

STATE OF ILLINOIS
DEPARTMENT OF TRANSPORTATION
DIVISION OF HIGHWAYS

PROPOSED
HIGHWAY PLANS

IDOT /IHPA STATEWIDE
DAVID DAVIS ST HISTORIC SITE
SIDEWALK IMPROVEMENTS
MCLEAN COUNTY
C-30-004-09

F.A. RTE.	SECTION	COUNTY	TOTAL SHEETS	SHEET NO.
		MCLEAN	7	1
FED. ROAD DIST. NO.	ILLINOIS	CONTRACT NO. 46027		

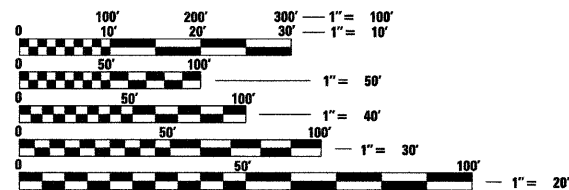
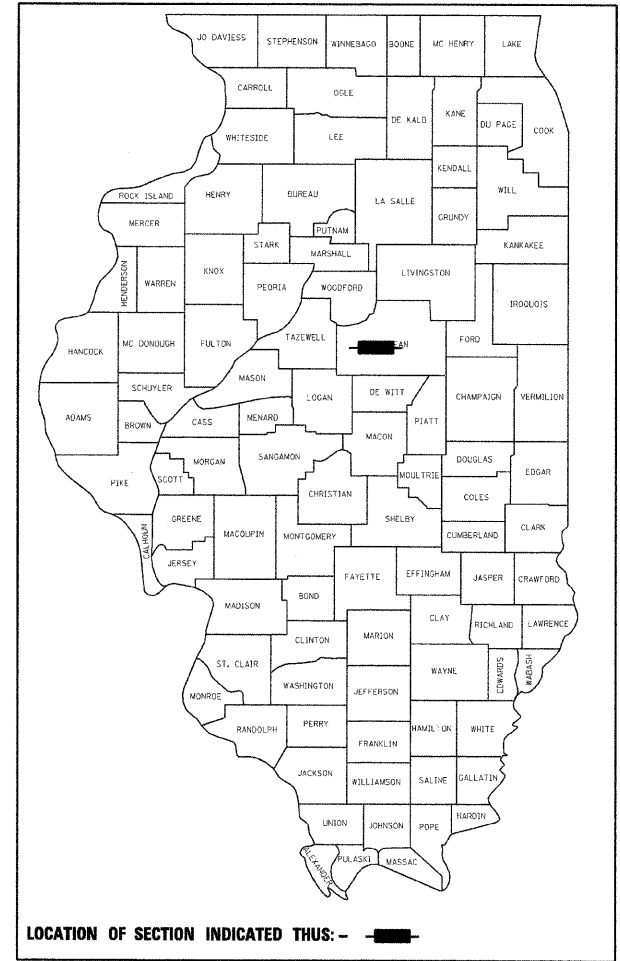
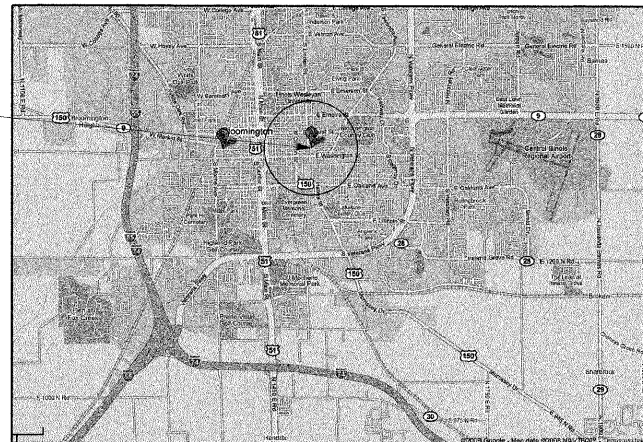
INDEX OF SHEETS

SHEET NO.	SHEET TITLE
1	COVER SHEET
2	SUMMARY & SCHEDULE OF QUANTITIES, STANDARDS, AND GENERAL NOTES
3	DEMOLITION PLAN
4	PROPOSED LAYOUT
5	DETAILS
6	GATE, FENCE, AND SIDEWALK DETAILS
7	ELECTRICAL DETAILS

LEGEND

-----	EXISTING FENCE
⊞	EXISTING TELEPHONE SPLICE BOX
⊞	EXISTING POWER POLE
⊞	EXISTING LIGHT POLE
○	EXISTING WATER VALVE
⊞	EXISTING FIRE HYDRANT
⊞	EXISTING GUY WIRE
⊞	EXISTING SIGN
⊞	EXISTING MAILBOX
⊞	EXISTING MANHOLE
○	EXISTING CATCH BASIN
⊞	EXISTING INLET
⊞	EXISTING DECIDUOUS TREE

PROPOSED IMPROVEMENTS

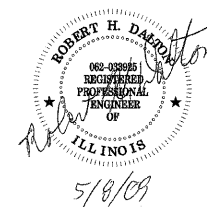


FULL SIZE PLANS HAVE BEEN PREPARED USING STANDARD ENGINEERING SCALES. REDUCED SIZED PLANS WILL NOT CONFORM TO STANDARD SCALES. IN MAKING MEASUREMENTS ON REDUCED PLANS, THE ABOVE SCALES MAY BE USED.

J.U.L.I.E.
 JOINT UTILITY LOCATION INFORMATION FOR EXCAVATION
 1-800-892-0123
 OR 811

PROJECT ENGINEER
PROJECT MANAGER

CONTRACT NO. 46027



STATE OF ILLINOIS
DEPARTMENT OF TRANSPORTATION
DIVISION OF HIGHWAYS

SUBMITTED June 26, 20 09
Eric E. Hain
 DEPUTY DIRECTOR OF HIGHWAYS, REGION ENGINEER

June 26, 20 09
Charles J. Ingersoll
 ENGINEER OF DESIGN AND ENVIRONMENT

June 26, 20 09
Christine M. Reed
 DIRECTOR OF HIGHWAYS, CHIEF ENGINEER

PRINTED BY THE AUTHORITY
OF THE STATE OF ILLINOIS

100% STATE

SUMMARY OF QUANTITIES		UNITS	TOTAL
CODE #	PAY ITEM		
35101600	AGGREGATE BASE COURSE, TYPE B 4"	SQ YD	313.9
35800100	PREPARATION OF BASE PAVEMENT,	SQ YD	267
42300300	PORTLAND CEMENT CONCRETE DRIVEWAY 7 INCH	SQ YD	65.6
42400200	PORTLAND CEMENT CONCRETE SIDEWALK, 5 INCH	SQ FT	1193.8
42400500	PORTLAND CEMENT CONCRETE SIDEWALK, SPECIAL	SQ FT	878
42400800	DETECTABLE WARNINGS	SQ FT	46
44000200	DRIVEWAY PAVEMENT REMOVAL	SQ YD	73.0
44000600	SIDEWALK REMOVAL	SQ FT	258.3
44004700	SIDEWALK REMOVAL (SPECIAL)	SQ FT	928.6
542A0213	PIPE CULVERTS, CLASS A, TYPE 1 8"	FOOT	2
60602800	CONCRETE GUTTER, TYPE B	FOOT	92.9
67100100	MOBILIZATION	L SUM	1
70102620	TRAFFIC CONTROL AND PROTECTION, STANDARD 701501	L SUM	1
78001130	PAINT PAVEMENT MARKING - LINE 6"	FOOT	155.4
B2013466	T-MALUS GOLD RAIN (GOLD RAIN CRABAPPLE), 6" HEIGHT, CLUMP FORM, BALLED AND BURLAPPED	EACH	3
X0324938	LIMESTONE REPLACEMENT	SQ FT	37.3
XX000882	WOOD FENCE	FOOT	41.1
XX001758	WOOD FENCE REMOVAL	FOOT	73.7
XX002063	LIGHTING SYSTEM COMPLETE	L SUM	1
XX003121	TRENCH DRAIN, SPECIAL	FOOT	15.5
XX003181	GATES COMPLETE (SET OF 2)	EACH	1
XX003461	EARTHWORK EXCAVATION, SPECIAL	L SUM	1
X0301446	GATE, SPECIAL	EACH	1
B1012300	CONDUIT IN TRENCH, 1" DIA., PVC	FOOT	88
B1900200	TRENCH AND BACKFILL FOR ELECTRICAL WORK	FOOT	70

LIST OF STANDARDS

- 424001-05 CURB RAMPS FOR SIDEWALKS
- 606201-02 CONCRETE GUTTER, TYPE B
- 701501-05 URBAN LANE CLOSURE 2L 2W - UNDIVIDED
- 701901-01 TRAFFIC CONTROL DEVICES

GENERAL NOTES

- ALL ELEVATIONS ARE REFERENCED TO ELEVATIONS ESTABLISHED BY VASCONCELLES ENGINEERING CORP.
- WHERE SECTION OR SUBSECTION MONUMENTS ARE ENCOUNTERED, THE ENGINEER SHALL BE NOTIFIED BEFORE SUCH MONUMENTS ARE REMOVED. THE CONTRACTOR SHALL PROTECT AND CAREFULLY PRESERVE ALL PROPERTY MARKERS AND MONUMENTS UNTIL THE OWNER AND AUTHORIZED SURVEYOR OR AGENT HAS WITNESSED OR OTHERWISE REFERENCED THEIR LOCATION. IF THE ENGINEER DECIDES TO HAVE THE CONTRACTOR RESET THE MONUMENT, THIS WORK WILL BE PAID FOR IN ACCORDANCE WITH ARTICLE 109.04.
- THE CONTRACTOR SHALL CONTACT J.U.L.I.E. PRIOR TO ANY EXCAVATION TO HAVE ALL PUBLIC AND PRIVATE UTILITIES LOCATED.
- THE CONTRACTOR SHALL BE RESPONSIBLE FOR PROTECTING UTILITY PROPERTY FROM CONSTRUCTION OPERATIONS AS OUTLINED IN ARTICLE 107.26 OF THE STANDARD SPECIFICATIONS. THE J.U.L.I.E. NUMBER IS (800) 892-0123. A MINIMUM OF 48 HOURS ADVANCE NOTICE IS REQUIRED. SEE SPECIAL PROVISIONS FOR STATUS OF UTILITIES, WITH UTILITY COMPANIES LISTED.
- ANY REFERENCE TO THE STANDARDS THROUGHOUT THE PLANS SHALL BE INTERPRETED TO BE THE LATEST STANDARDS OF THE DEPARTMENT AS INCLUDED IN THE PLANS.
- ALL DETAILS IN THE PLANS SHALL GOVERN CONSTRUCTION OF THIS PROJECT, AND IN CASE OF CONFLICT WITH ANY STANDARD DRAWINGS INCLUDED, THE SAID DETAILS SHALL TAKE PRECEDENCE AND GOVERN.

MOBILIZATION	
LOCATION	QUANTITY (LSUM)
ENTIRE PROJECT	1 LSUM
TOTAL =	1 LSUM

PAVING SCHEDULE

LOCATION	PC CONC PAVEMENT 7"	PC CONC SIDEWALK 5"	AGG BASE CSE B 4"	DETECTABLE WARNINGS	PC CONC SIDEWALK SPC	PC CONC GUTTER TYP B	PREP OF BASE	LIMESTONE REPLACEMENT
	(SQ YD)	(SQ FT)	(SQ YD)	(SQ FT)	(SQ FT)	(FOOT)	(SQ YD)	(SQ FT)
DAVID DAVIS HOUSE								
100+59.89, 33.83' LT TO 100+85.43, 58.64' LT	65.6		65.6					
100+85.37, 9.31' LT TO 100+90.37, 9.26' LT				10				
100+85.37, 9.31' LT TO 100+90.38, 15.26' LT		30.0	3.3					
100+85.38, 18.81' LT TO 100+97.46, 78.11' LT		496.0	55.1					
100+93.87, 9.26' LT TO 101+86.78, 10.24' LT			18.1			92.9		
100+93.89, 10.98' LT TO 102+26.28, 24.93' LT		667.8	74.2					
101+85.66, 8.62' RT TO 102+55.92, 28.49' LT							267	
102+22.08, 22.22' LT TO 102+27.37, 23.24' LT				10				
102+52.06 TO 102+54.06				13				
102+54.06 TO 103+89.14			97.6		878			
103+89.14 TO 103.91.14				13				
104+03.16, 6.24' RT TO 104+06.92, 5.98' LT								37.3
TOTAL =	65.6	1193.8	313.9	46	878	92.9	267	37.3

REMOVAL ITEMS

LOCATION (STATION TO STATION)	SIDEWALK REMOVAL	SIDEWALK REMOVAL (SPECIAL)	DRIVEWAY REMOVAL	WOOD FENCE REMOVAL
	(SQ FT)	(SQ FT)	(SQ YD)	(FOOT)
DAVID DAVIS HOUSE				
100+59.89, 33.83' LT TO 100+93.14, 33.91' LT			73.0	
100+73.42, 17.81' LT TO 101+05.17, 17.98' LT				31.8
100+85.78, 42.78, LT TO 100+97.34, 78.16' LT	258.3			
100+89.85, 63.64' LT TO 100+98.07, 63.89' LT				8.2
100+98.07, 63.89' LT TO 100+98.14, 78.32' LT				14.4
102+02.78, 18.31' LT TO 102+07.79, 18.44' LT				10.3
102+07.79, 18.44' LT TO 102+08.10, 32.69' LT				5.0
102+54.07 TO 103+91.18		891.3		
104+03.16 TO 104+06.92		37.3		
TOTAL =	258.3	928.6	73.0	73.7

MISCELLANEOUS ITEMS

LOCATION (STATION TO STATION)	GATES COMPLETE (SET OF 2)	PIPE CULVERTS 8"	LIGHTING UNIT COMPLETE	TRENCH DRAIN SPECIAL	WOOD FENCE	EARTH EXCAVATION SPECIAL	TRAFFIC CONT&PROT 701501	PAINT PVT MK LINE 6"	T-MALUS GOLD RAIN 6'	GATE SPECIAL
	(EACH)	(FOOT)	(EACH)	(FOOT)	(FOOT)	(L SUM)	(L SUM)	(FOOT)	(EACH)	(EACH)
DAVID DAVIS HOUSE										
ENTIRE PROJECT						1	1			
100+73.42, 17.81' LT TO 100+79.20, 17.76' LT					5.7					
100+79.20, 17.76' LT TO 100+84.95, 17.79' LT					5.8					
100+84.43, 16.31' LT TO 100+93.88, 10.24' LT				15.5						
100+84.94, 17.82' LT TO 100+90.94, 17.90' LT	1									
100+85.33, 11.56' LT			1							
100+90.95, 17.90' LT TO 100+97.23, 18.02' LT					6.3					
100+91.93, 16.16' LT TO 100+94.62, 17.53' LT		2								
100+91.95, 19.42' LT			1							
100+91.95, 31.15' LT			1							
100+91.95, 42.90' LT			1							
100+97.23, 18.02' LT TO 101+05.17, 17.98' LT					8.0					
100+98.55, 54.67' LT			1							
100+98.55, 66.41' LT			1							
101+02.98, 53.16' LT									1	
101+03.02, 64.50' LT									1	
101+03.07, 74.43' LT									1	
102+02.78, 18.31' LT TO 102+07.79, 18.44' LT					5.0					
102+07.79, 18.44' LT TO 102+07.97, 26.70' LT					10.3					
102+08.01, 28.69' LT TO 102+08.10, 32.69' LT										1
102+22.08, 22.22' LT TO 102+54.06, 3.25' LT								155.4		
TOTAL =	1	2	6	15.5	41.1	1	1	155.4	3	1

FILE NAME =	USER NAME = #USER#	DESIGNED - T.T.P.	REVISED -
#FILEL#		DRAWN - S.D.K.	REVISED -
	PLOT SCALE = #SCALE#	CHECKED - R.H.D.	REVISED -
	PLOT DATE = #DATE#	DATE - 2/24/09	REVISED -

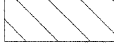
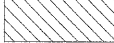

STATE OF ILLINOIS DEPARTMENT OF TRANSPORTATION

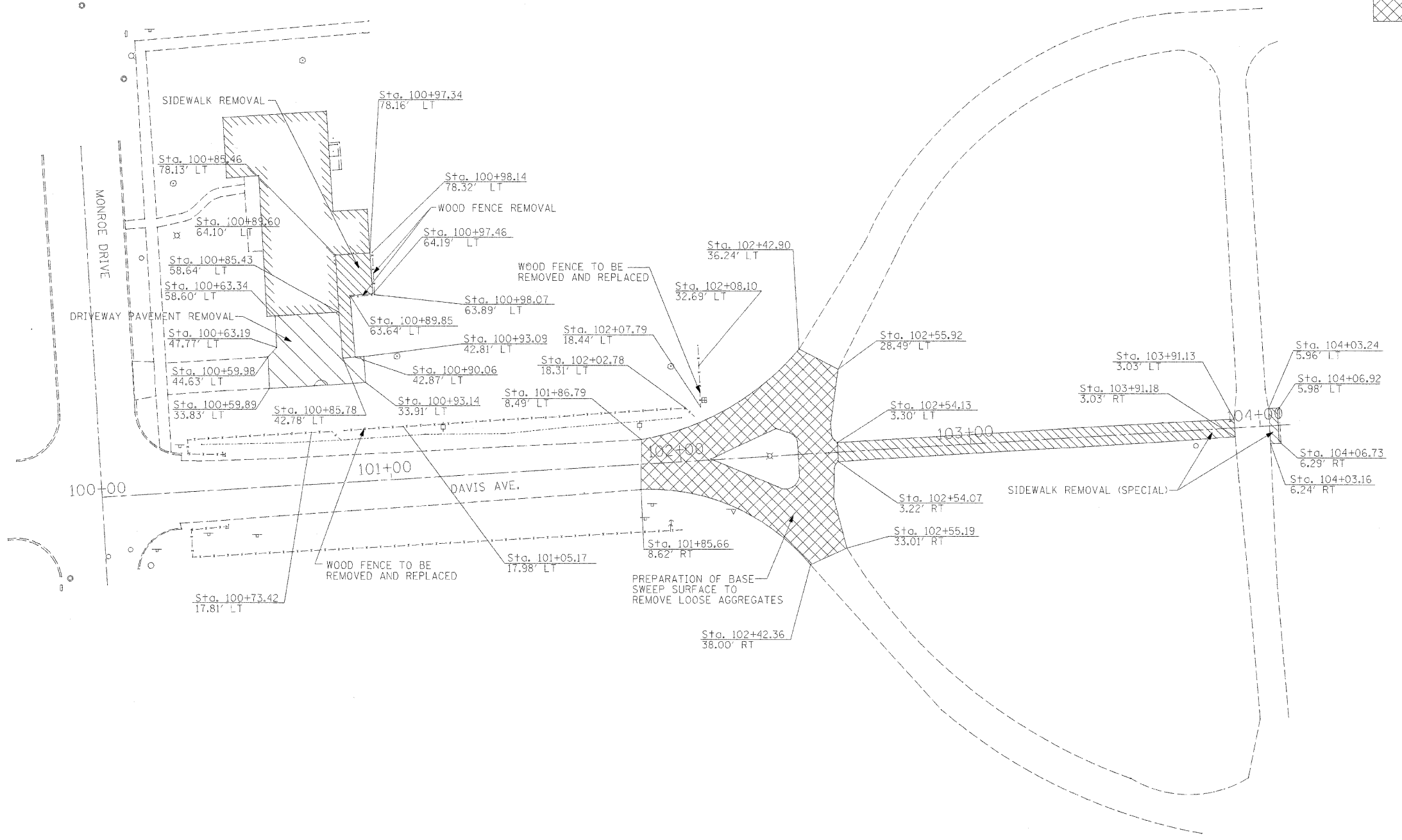
SUMMARY & SCHEDULE OF QUANTITIES, STANDARDS, & GENERAL NOTES

DAVID DAVIS STATE HISTORIC SITE

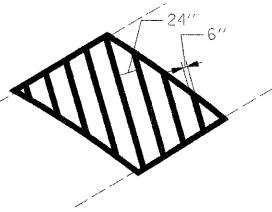
F.A. RTE.	SECTION	COUNTY	TOTAL SHEETS	SHEET NO.
		MCLEAN	7	2
SCALE:		SHEET NO. 2 OF 7 SHEETS		STA. TO STA.
FED. ROAD DIST. NO.		ILLINOIS FED. AID PROJECT		CONTRACT NO. 46027



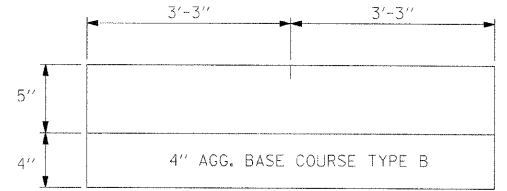
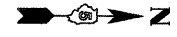
-  DRIVEWAY PAVEMENT REMOVAL
-  SIDEWALK REMOVAL
-  SWEEP SURFACE TO REMOVE LOOSE AGGREGATES



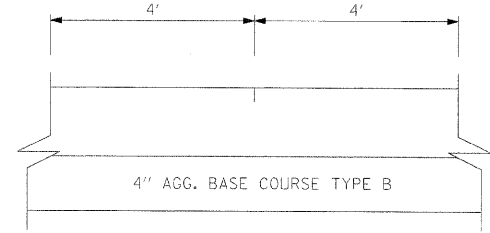
FILE NAME = #FILEL#	USER NAME = #USER#	DESIGNED - R.H.D	REVISED -	STATE OF ILLINOIS DEPARTMENT OF TRANSPORTATION	DEMOLITION PLAN DAVID DAVIS STATE HISTORIC SITE			F.A. RTE.	SECTION	COUNTY	TOTAL SHEETS	SHEET NO.
	PLOT SCALE = #SCALE#	DRAWN - J.H.F.	REVISED -		SCALE: 1" = 20'	SHEET NO. 3 OF 7 SHEETS	STA.	TO STA.	MCLEAN	7	3	
	PLOT DATE = #DATE#	CHECKED - T.T.P.	REVISED -		CONTRACT NO. 46027			FED. ROAD DIST. NO. ILLINOIS FED. AID PROJECT				
		DATE - 2/2/09	REVISED -									



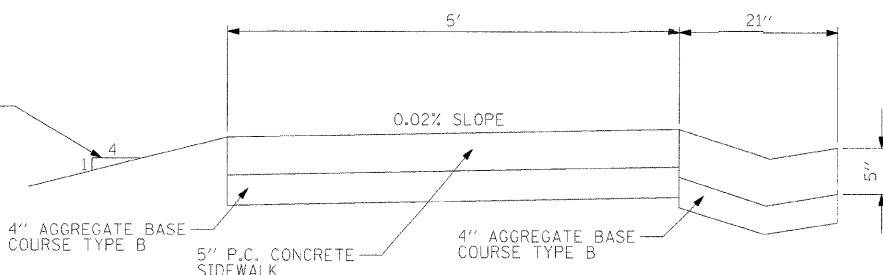
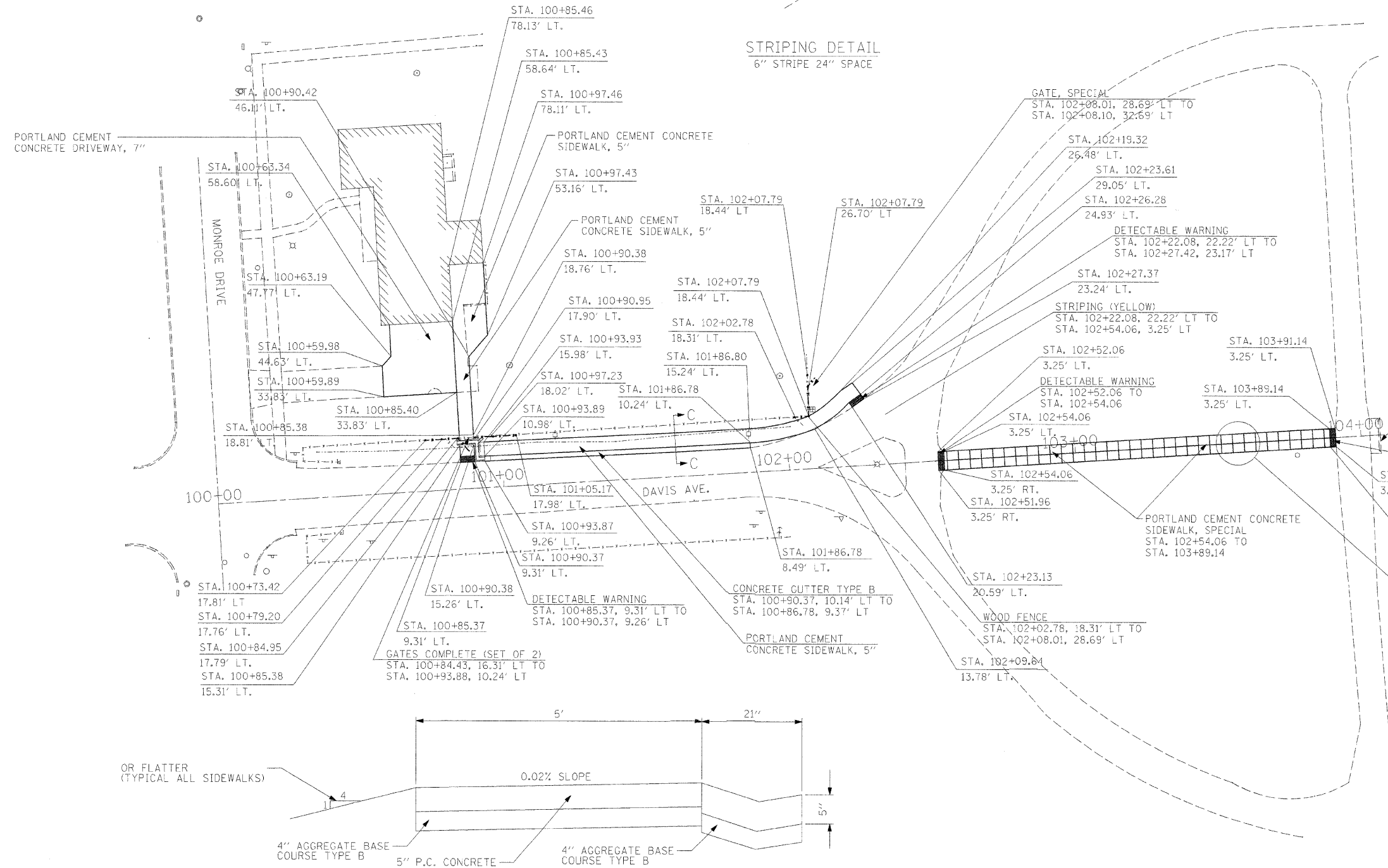
STRIPING DETAIL
6" STRIPE 24" SPACE



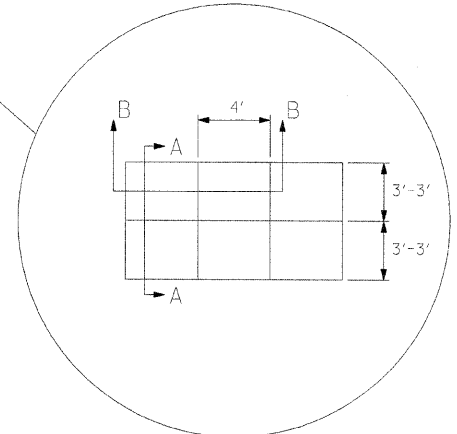
SECTION "A-A"
NOT TO SCALE



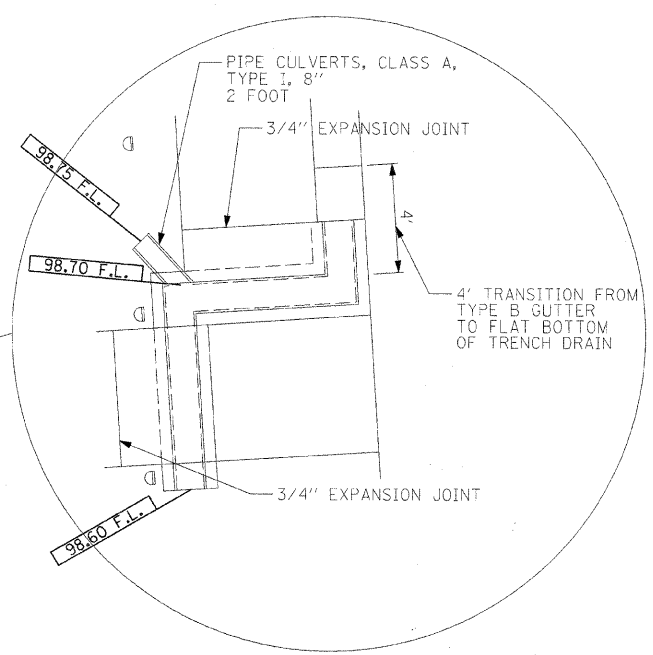
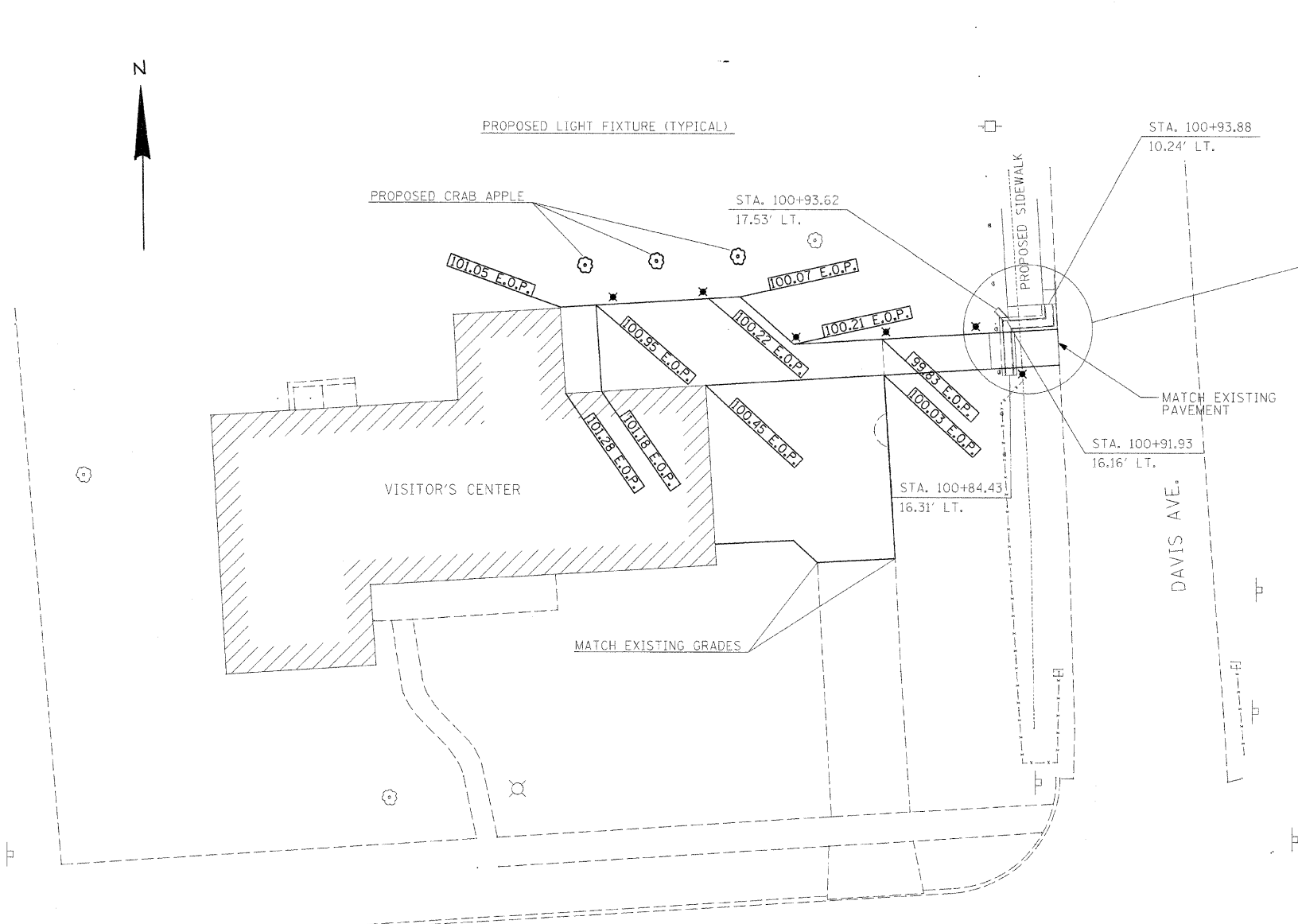
SECTION "B-B"
NOT TO SCALE



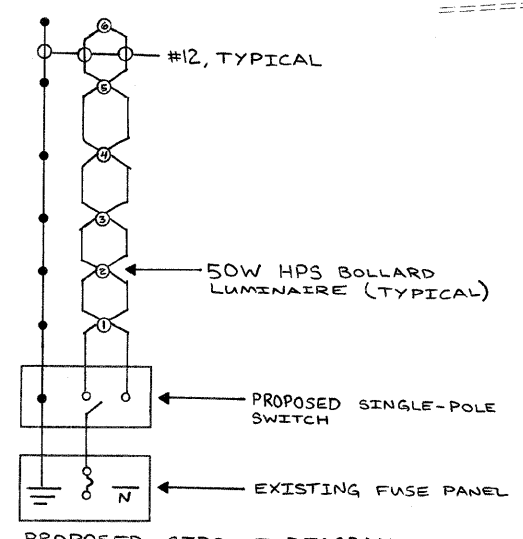
SECTION "C-C"
NOT TO SCALE



FILE NAME = #FILE#	USER NAME = #USER#	DESIGNED - R.H.D	REVISED -	STATE OF ILLINOIS DEPARTMENT OF TRANSPORTATION	PROPOSED LAYOUT DAVID DAVIS STATE HISTORIC SITE			F.A. RTE.	SECTION	COUNTY	TOTAL SHEETS	SHEET NO.	
		DRAWN - J.H.F.	REVISED -		SCALE: 1" = 20'	SHEET NO. 4 OF 7 SHEETS	STA.	TO STA.	FED. ROAD DIST. NO.	ILLINOIS FED. AID PROJECT	MCLEAN	7	4
		CHECKED - T.T.P.	REVISED -										
		DATE - 2/24/09	REVISED -										
											CONTRACT NO. 46027		

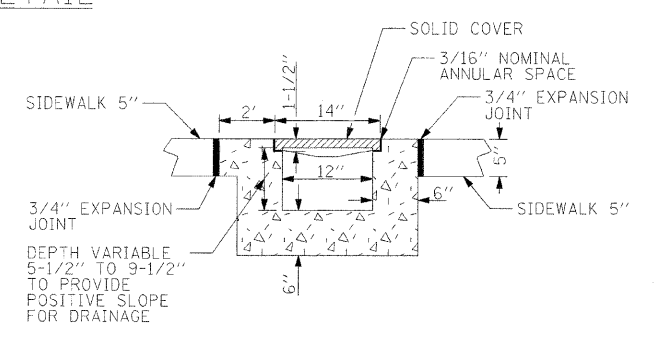


NOTE:
STATIONING IS WITH RESPECT TO DAVIS AVE. SEE SHEET 4.

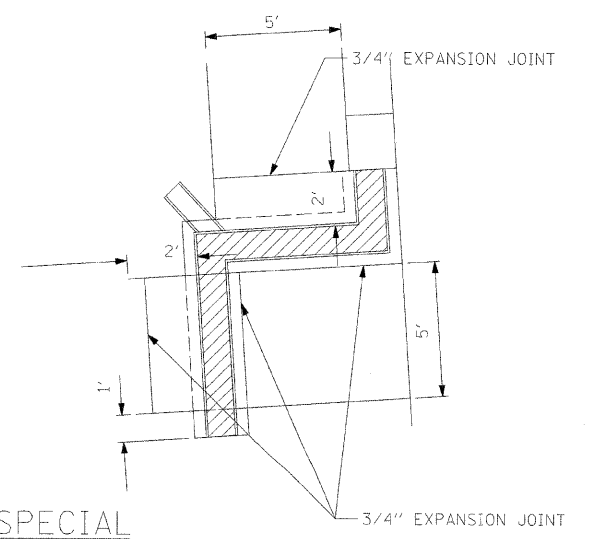


PROPOSED CIRCUIT DIAGRAM

VISITOR'S CENTER DETAIL
1" = 10'



TRENCH DRAIN, SPECIAL
NOT TO SCALE



FILE NAME = #FILE#	USER NAME = #USER#	DESIGNED - R.H.D.	REVISED -
		DRAWN - J.H.F.	REVISED -
		CHECKED - T.T.P.	REVISED -
		DATE - 2/24/09	REVISED -

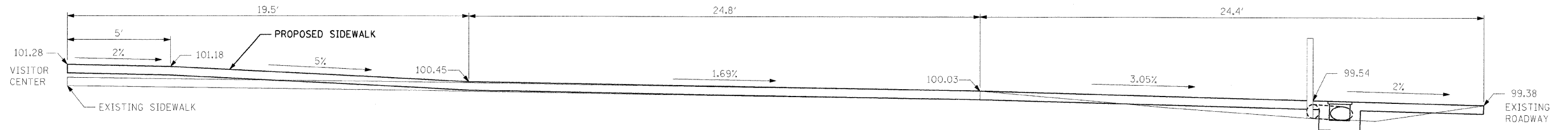
**STATE OF ILLINOIS
DEPARTMENT OF TRANSPORTATION**

**DETAILS
DAVID DAVIS STATE HISTORIC SITE**

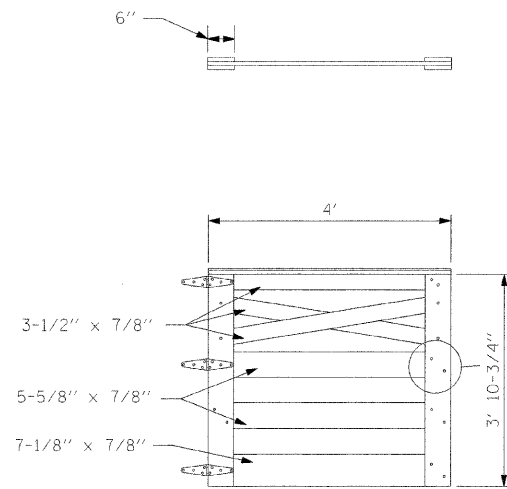
SCALE: 1" = 20' SHEET NO. 5 OF 7 SHEETS STA. TO STA.

F.A. RTE.	SECTION	COUNTY	TOTAL SHEETS	SHEET NO.
		MCLEAN	7	5
FED. ROAD DIST. NO.		ILLINOIS FED. AID PROJECT		CONTRACT NO. 46027

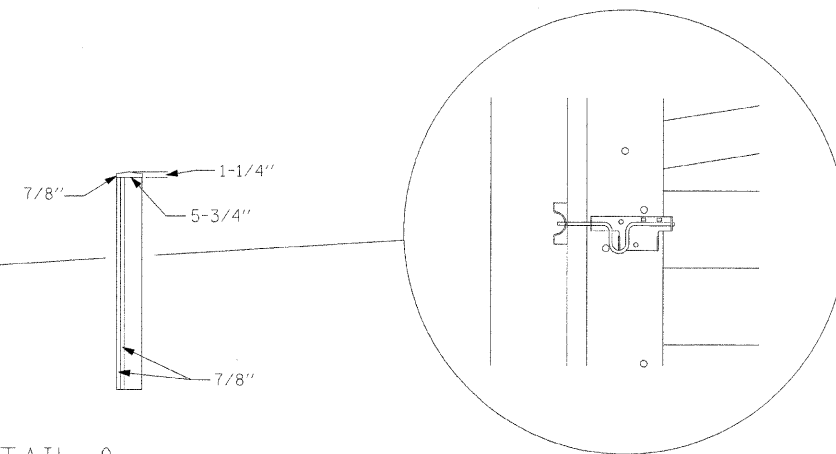
JOB NO. 250-061-L VASCONCELLES ENGINEERING CORP. DESIGN FIRM REGISTRATION NUMBER 184-002107



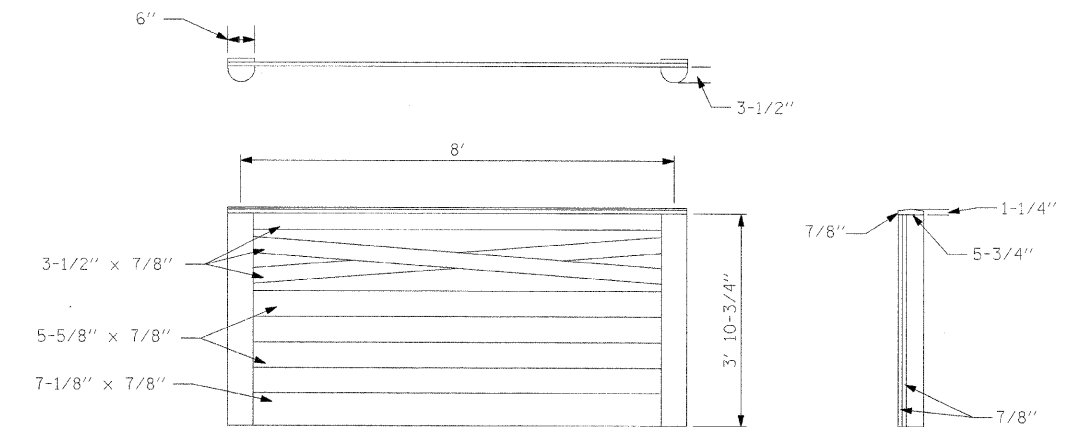
PROPOSED SIDEWALK PROFILE (SOUTH EDGE)
NOT TO SCALE



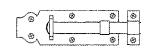
EXISTING GATE DETAIL &
GATE SPECIAL
NOT TO SCALE



GATE LATCH DETAIL
NOT TO SCALE
ON OTHER SIDE OF GATE



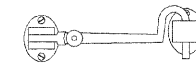
EXISTING FENCE DETAIL
NOT TO SCALE



GATE LATCH DETAIL
NOT TO SCALE
WHITTINGTON COLLECTION IRON
SLIDING BOLT, SIGNATURE HARDWARE
OR APPROVED EQUAL



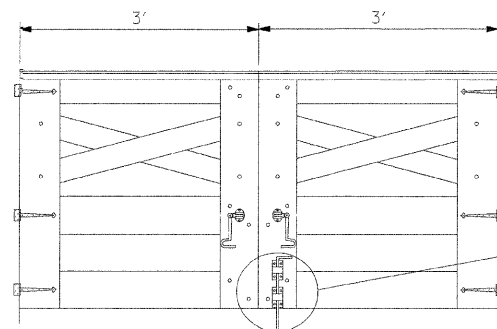
GATE HINGE DETAIL
NOT TO SCALE
ACORN MANUFACTURING 9" HEART
SHAPE STRAP HINGE, SIGNATURE
HARDWARE OR APPROVED EQUAL



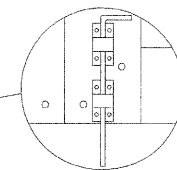
HOOK LATCH DETAIL
NOT TO SCALE
TO HOLD GATES IN THE OPEN POSITION
WHITTINGTON COLLECTION SOLID
BRONZE CABIN DOOR HOOK LATCH,
SIGNATURE HARDWARE OR APPROVED EQUAL

* NOTE WHITTINGTON COLLECTION IRON SLIDING BOLT SIGNATURE SERIES HARDWARE IS MOUNTED ON THE TOP AND BOTTOM OF THE VISITOR CENTER SIDE OF GATE. SEE SITE PERSONEL FOR LOCATIONS.

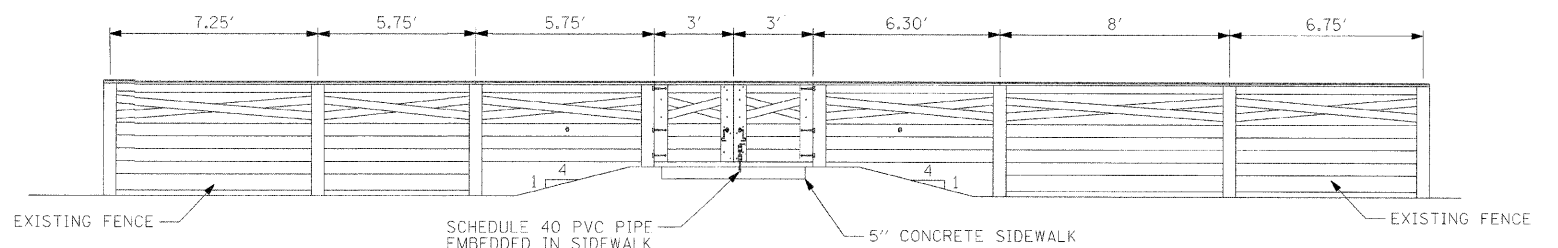
* NOTE WHITTINGTON COLLECTION SOLID BRONZE CABIN DOOR HOOK LATCH SIGNATURE SERIES HARDWARE IS MOUNTED ON THE MIDDLE OF GATES COMPLETE (SET OF 2) ON THE VISITOR CENTER SIDE. SEE SITE PERSONEL FOR LOCATIONS.



GATES COMPLETE (SET OF 2)
NOT TO SCALE

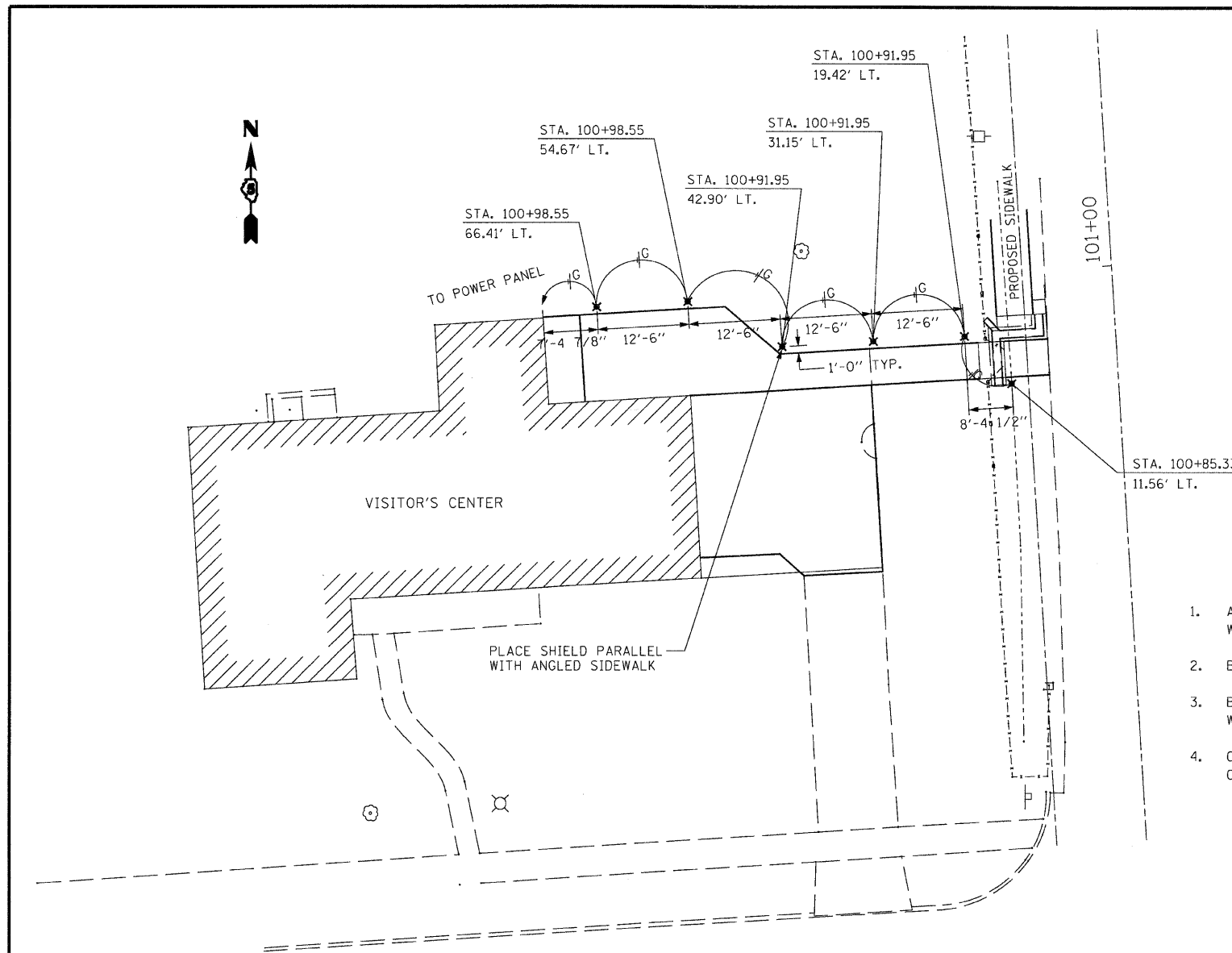


CANE BOLT/DROP ROD BOLT DETAIL
NOT TO SCALE
WHITTINGTON COLLECTION IRON
SURFACE BOLT, SIGNATURE HARDWARE
OR APPROVED EQUAL

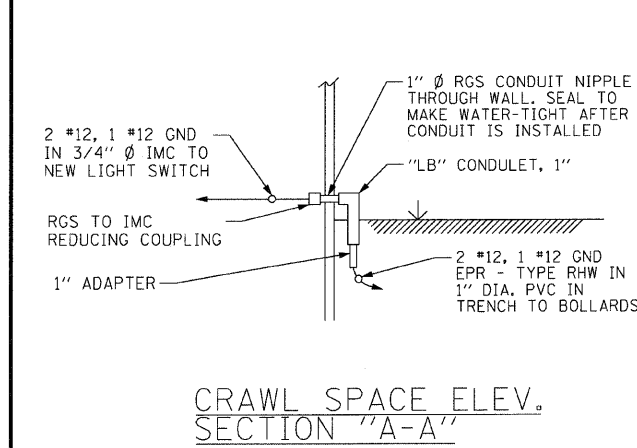


PROPOSED FENCE DETAIL (VIEW FROM DAVIS AVE)
NOT TO SCALE

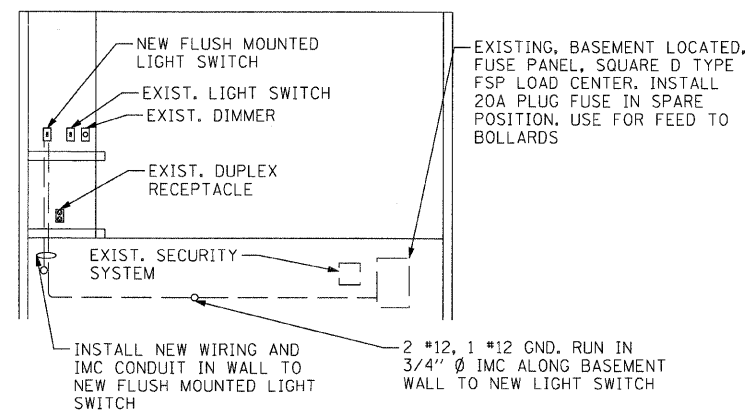
FILE NAME = #FILEL#	USER NAME = #USER#	DESIGNED - R.H.D.	REVISED -	STATE OF ILLINOIS DEPARTMENT OF TRANSPORTATION	GATE, FENCE, AND SIDEWALK DETAILS DAVID DAVIS STATE HISTORIC SITE			F.A. RTE.	SECTION	COUNTY	TOTAL SHEETS	SHEET NO.
		DRAWN - J.H.F.	REVISED -		SCALE: 1" = 20'	SHEET NO. 6 OF 7 SHEETS	STA.	TO STA.	MCLEAN	7	6	
		CHECKED - T.T.P.	REVISED -		CONTRACT NO. 46027							
		DATE - 2/2/09	REVISED -		ILLINOIS FED. AID PROJECT							



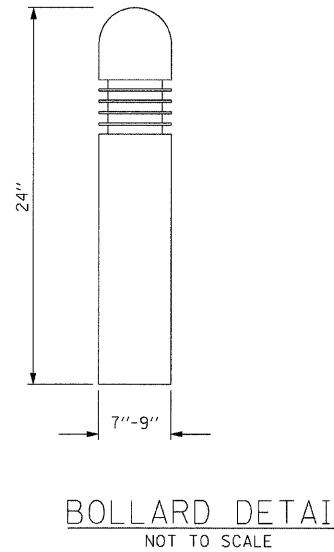
VISITOR'S CENTER DETAIL
1" = 10'



CRAWL SPACE ELEV. SECTION "A-A"

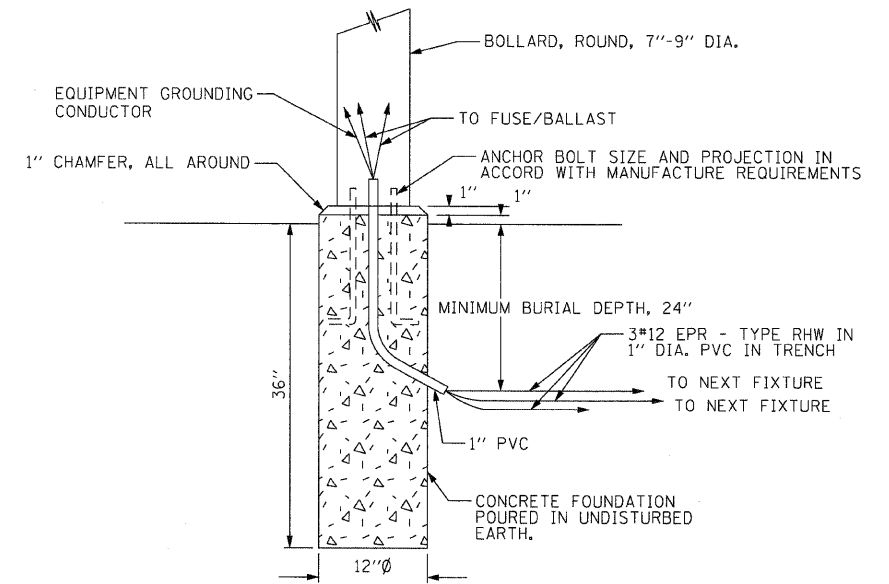


ELEV. VIEW SOUTH WALL OF MAIN ENTRY



ELECTRICAL NOTES:

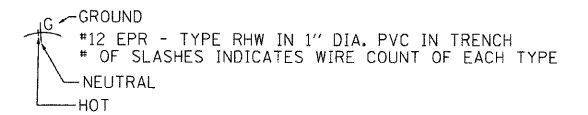
1. ALL ELECTRICAL WORK TO COMPLY WITH THE NEC 2008.
2. BOLLARDS TO OPERATE @ 120VAC, 1Ø, 3W.
3. BOLLARDS TO USE 50W HPS LAMPS PROVIDED WITH FIXTURE BY CONTRACTOR.
4. CONTRACTOR SHALL FIELD VERIFY EXISTING CONDITIONS.



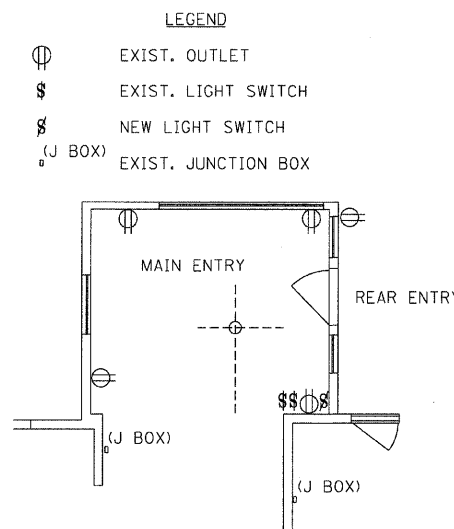
LIGHTING BOLLARD INSTALLATION - TYPICAL
NOT TO SCALE

LEGEND

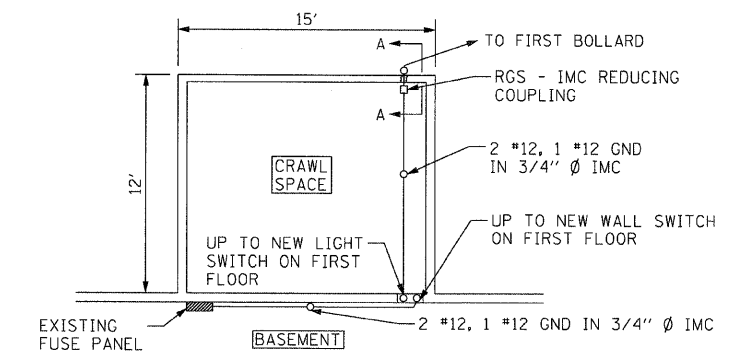
- BOLLARD WITH 50W HPS LUMINAIRE



NOTE: PROVIDE 180° HOUSE SIDE SHIELD FOR ALL BOLLARDS. WHERE MANUFACTURER SHIELDS ARE UNAVAILABLE PROVIDE PAINTED BLACK LAMP CLASS COVER WITH HEAT RESISTANT PAINT.



PLAN VIEW MAIN ENTRY



PLAN VIEW CRAWL SPACE/ BASEMENT

FILE NAME =	USER NAME = #USER#	DESIGNED - R.H.D	REVISED -	STATE OF ILLINOIS DEPARTMENT OF TRANSPORTATION	LIGHT DETAILS DAVID DAVIS STATE HISTORIC SITE			F.A. RTE.	SECTION	COUNTY	TOTAL SHEETS	SHEET NO.	
#FILE#		DRAWN - J.H.F.	REVISED -		SCALE: 1" = 20'	SHEET NO. 7 OF 7 SHEETS	STA.	TO STA.	ILLINOIS	FED. AID PROJECT	MCLEAN	7	7
		CHECKED - T.T.P.	REVISED -										
		DATE - 2/2/09	REVISED -										