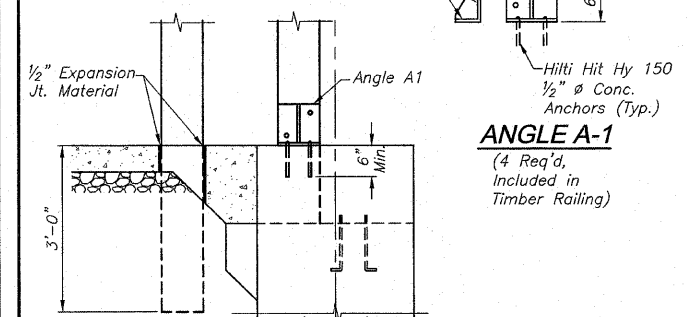
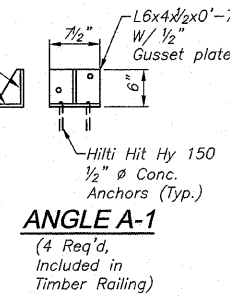


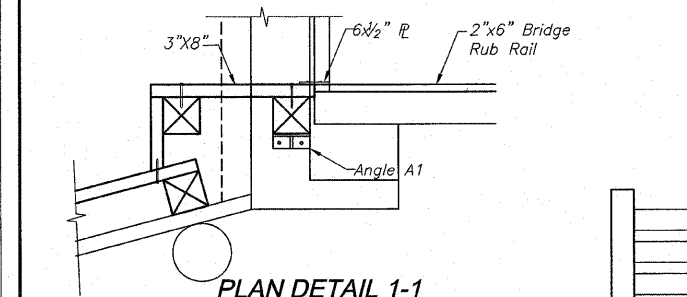
SECTION A-A



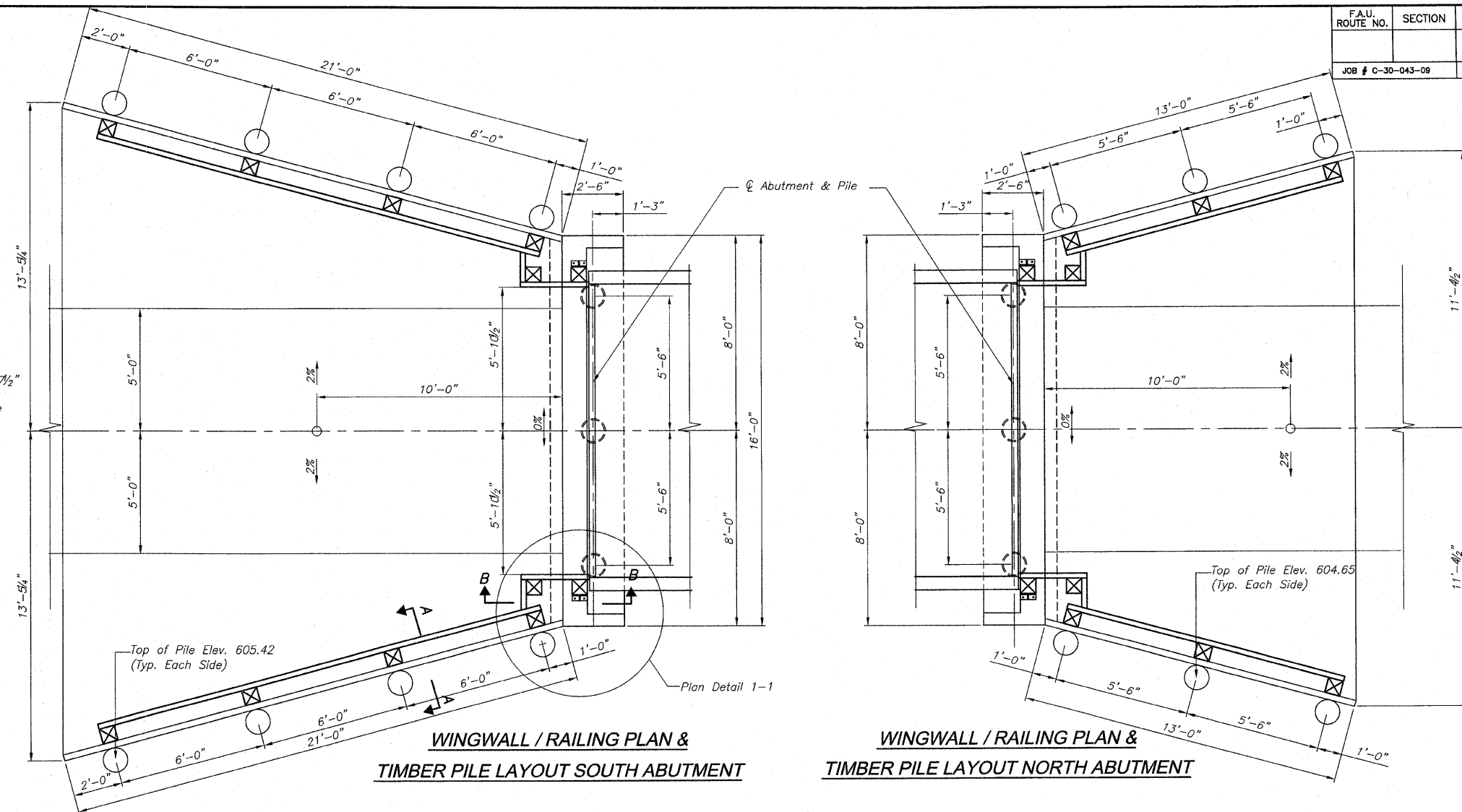
SECTION B-B



ANGLE A-1



PLAN DETAIL 1-1



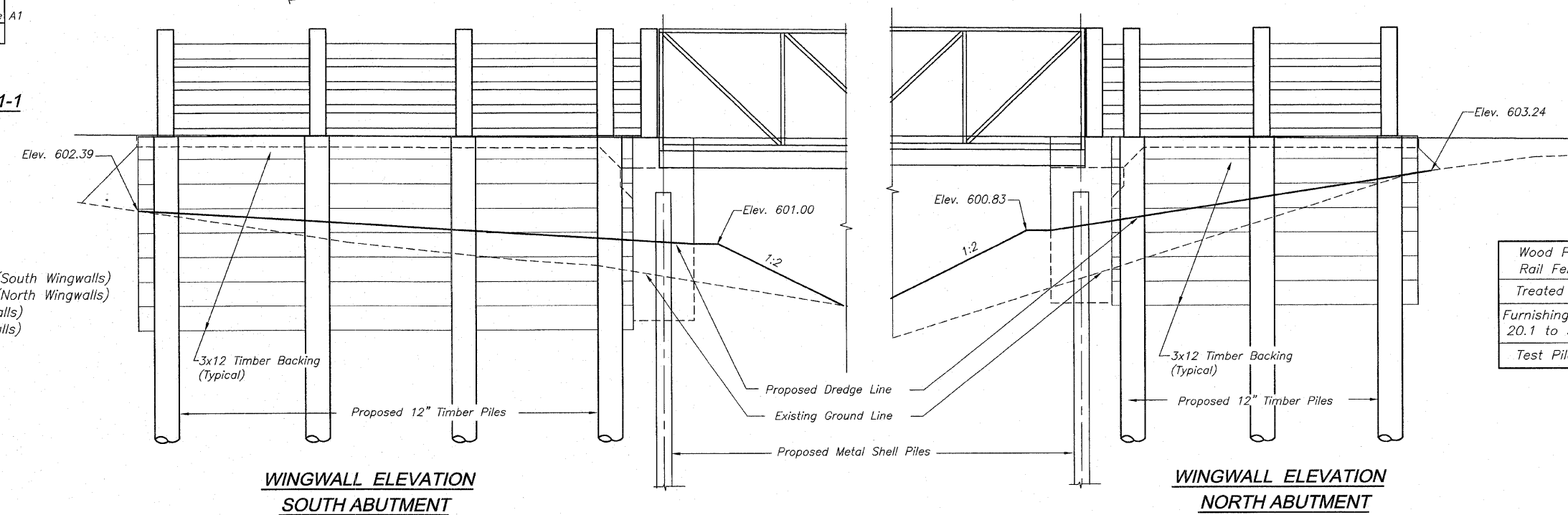
WINGWALL / RAILING PLAN & TIMBER PILE LAYOUT SOUTH ABUTMENT

WINGWALL / RAILING PLAN & TIMBER PILE LAYOUT NORTH ABUTMENT

PILE DATA

WINGWALLS:
 Type.....Timber 12" dia.
 Capacity.....24 Tons
 No. Req'd.....7 + 1 Test Pile (South Wingwalls)
 No. Req'd.....5 + 1 Test Pile (North Wingwalls)
 Est. Length.....25' (South Wingwalls)
 Est. Length.....25' (North Wingwalls)

DESIGNED	MHM
CHECKED	JBF
DRAWN	MHM
CHECKED	JBF



WINGWALL ELEVATION SOUTH ABUTMENT

WINGWALL ELEVATION NORTH ABUTMENT

BILL OF MATERIAL
For Two Wingwalls

Wood Post and Rail Fence	Foot	78
Treated Timber	F.B.M	486
Furnishing Treated Pile 20.1 to 38 Feet	Foot	300
Test Pile Timber	Each	2

WINGWALL DETAILS

GRAND ILLINOIS TRAIL
 CARROLL COUNTY
 STATION 150+77.75