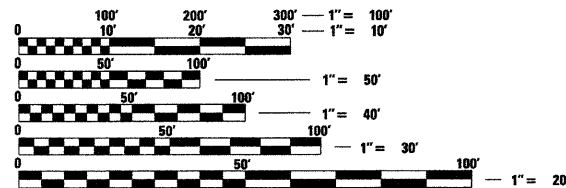
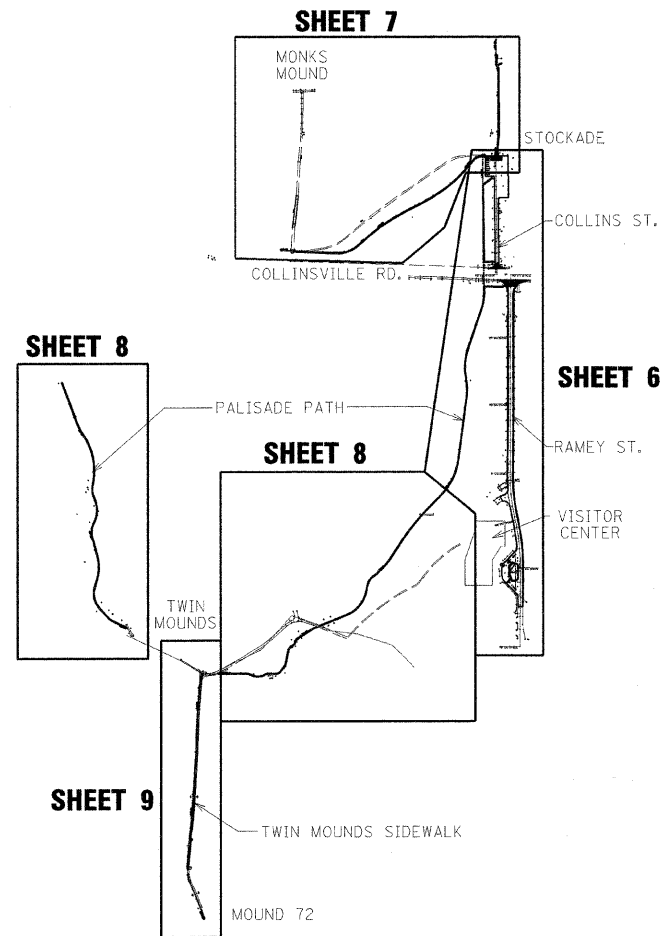


FOR INDEX OF SHEETS, SEE SHEET NO. 2

PLAN SHEET ARRANGEMENT



FULL SIZE PLANS HAVE BEEN PREPARED USING STANDARD ENGINEERING SCALES. REDUCED SIZED PLANS WILL NOT CONFORM TO STANDARD SCALES. IN MAKING MEASUREMENTS ON REDUCED PLANS, THE ABOVE SCALES MAY BE USED.

J.U.L.I.E.
JOINT UTILITY LOCATION INFORMATION FOR EXCAVATION
1-800-892-0123
OR 811

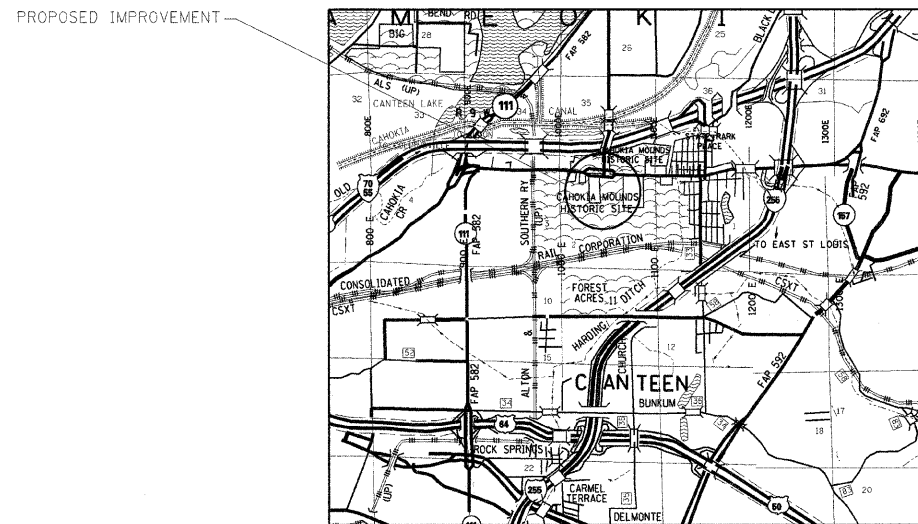
**PROJECT ENGINEER
PROJECT MANAGER**

CONTRACT NO. 46060

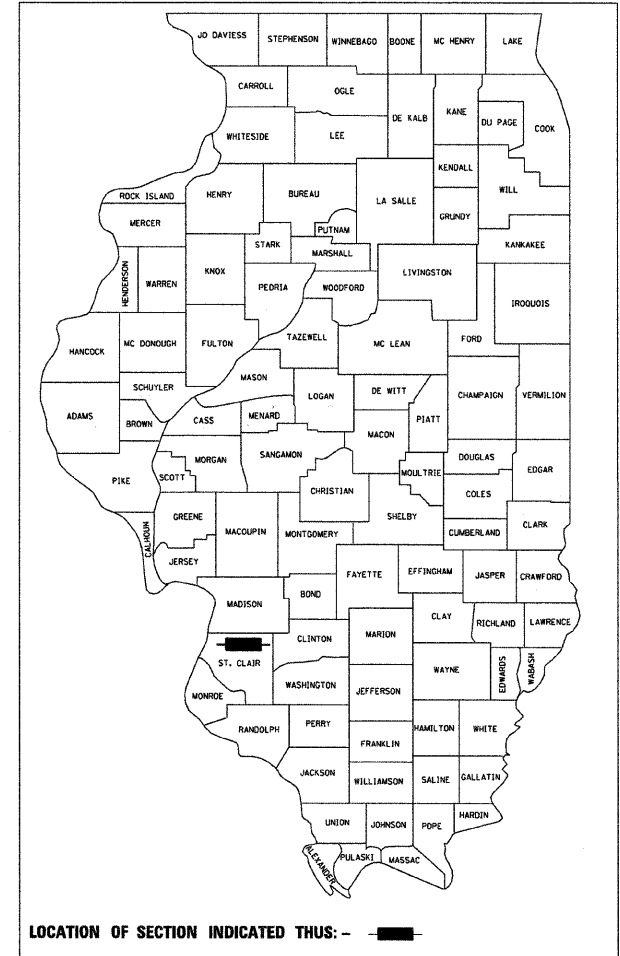
**STATE OF ILLINOIS
DEPARTMENT OF TRANSPORTATION
DIVISION OF HIGHWAYS**

**PROPOSED
HIGHWAY PLANS**

**IDOT / IHPA STATEWIDE
CAHOKIA MOUNDS ST HIST SITE
PARKING AND SIDEWALK IMPROVEMENTS
ST. CLAIR COUNTY
C-30-046-09**



F.A. RTE.	SECTION	COUNTY	TOTAL SHEETS	SHEET NO.
		ST. CLAIR	12	1
FED. ROAD DIST. NO.	ILLINOIS	CONTRACT NO. 46060		



LOCATION OF SECTION INDICATED THIS: —

STATE OF ILLINOIS
DEPARTMENT OF TRANSPORTATION
DIVISION OF HIGHWAYS

SUBMITTED June 26, 2009
Eric E. Horn
DEPUTY DIRECTOR OF HIGHWAYS, REGION ENGINEER

June 26, 2009
Charles J. Invernizzi
ENGINEER OF DESIGN AND ENVIRONMENT

June 26, 2009
Christine M. Reed
DIRECTOR OF HIGHWAYS, CHIEF ENGINEER

**PRINTED BY THE AUTHORITY
OF THE STATE OF ILLINOIS**