

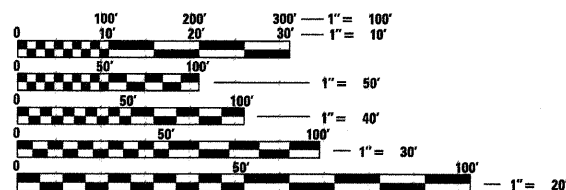
F.A. RTE.	SECTION	COUNTY	TOTAL SHEETS	SHEET NO.
		MADISON	13	1
FED. ROAD DIST. NO.	ILLINOIS	CONTRACT NO. 46061		

INDEX OF SHEETS

SHEET NO.	SHEET TITLE
1	COVER SHEET
2	SUMMARY/SCHEDULE OF QUANTITIES
3	TYPICAL SECTIONS, STANDARDS, SCHEDULES & GENERAL DETAILS
4	PROPOSED LAYOUT
5	DETAILS
6	EROSION CONTROL PLANS
7	SITE LIGHTING PLAN AND NOTES
8	SITE LIGHTING NOTES AND DETAILS
9-13	PROPOSED CROSS SECTIONS

LEGEND

	PROPOSED PARKING LOT
	EXISTING FENCE
	EXISTING LIGHT POLE
	EXISTING WARNING SIGN
	EXISTING POWER POLE
	EXISTING HANDHOLE
	EXISTING DOUBLE HANDHOLE
	EXISTING GUY WIRE
	EXISTING SIGN
	EXISTING FLARED END SECTION
	EXISTING MANHOLE
	EXISTING CATCH BASIN
	EXISTING INLET
	EXISTING DECIDUOUS TREE



FULL SIZE PLANS HAVE BEEN PREPARED USING STANDARD ENGINEERING SCALES. REDUCED SIZED PLANS WILL NOT CONFORM TO STANDARD SCALES. IN MAKING MEASUREMENTS ON REDUCED PLANS, THE ABOVE SCALES MAY BE USED.

J.U.L.I.E.
JOINT UTILITY LOCATION INFORMATION FOR EXCAVATION
1-800-892-0123
OR 811

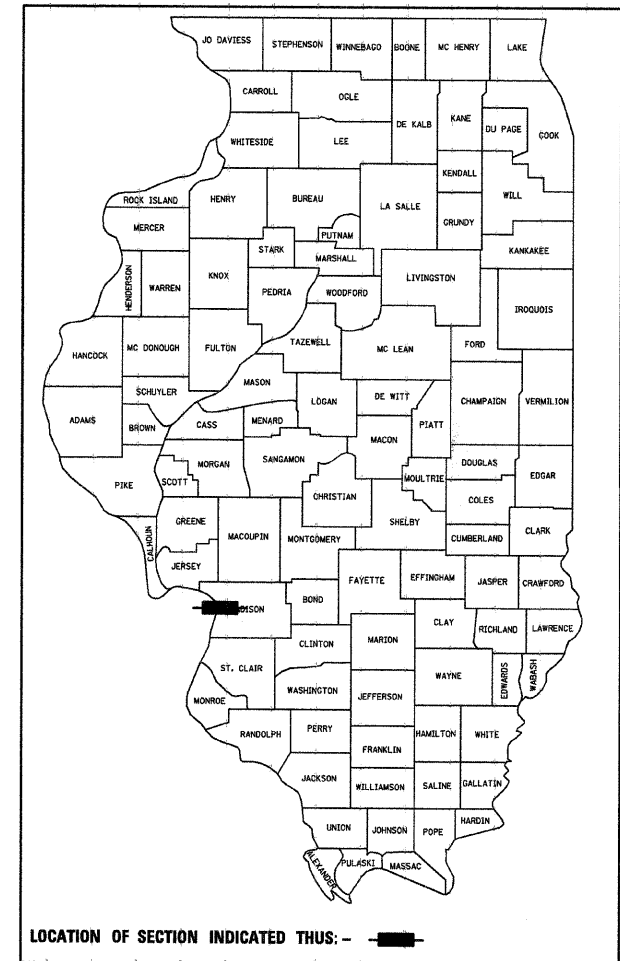
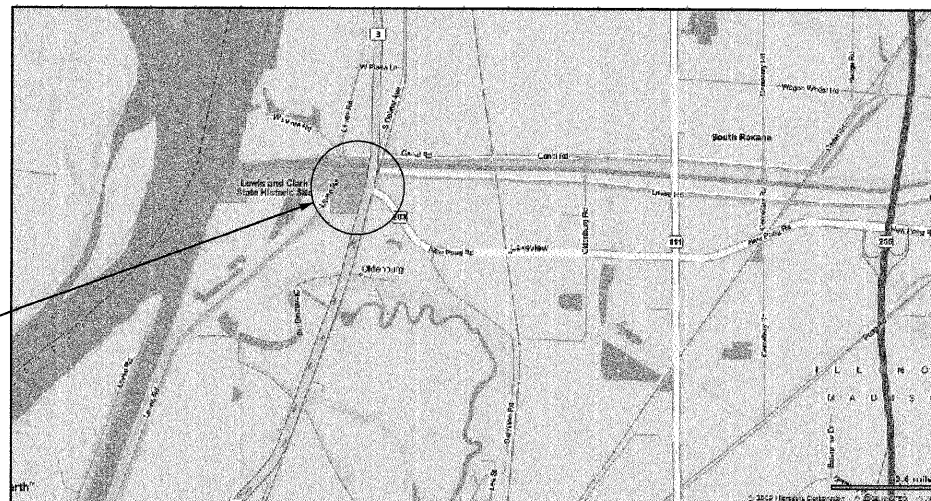
PROJECT ENGINEER
PROJECT MANAGER

CONTRACT NO. 46061

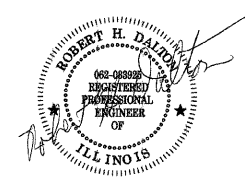
STATE OF ILLINOIS DEPARTMENT OF TRANSPORTATION DIVISION OF HIGHWAYS

PROPOSED HIGHWAY PLANS

**IDOT /IHPA STATEWIDE
LEWIS AND CLARK ST HIST SITE
PARKING LOT IMPROVEMENTS
MADISON COUNTY
C-30-047-09**



PROFESSIONAL SEALS
PROFESSIONAL SEAL OF ROBERT H. DALTON P.E.
COVERS THE FOLLOWING SHEETS: 1-6 & 9-13
PROFESSIONAL SEAL OF DAVID URY P.E.
COVERS THE FOLLOWING SHEETS: 7 & 8



STATE OF ILLINOIS
DEPARTMENT OF TRANSPORTATION
DIVISION OF HIGHWAYS

SUBMITTED June 26, 2009
Eric Estara
DEPUTY DIRECTOR OF HIGHWAYS, REGION ENGINEER

June 26, 2009
Charles J. Ingersoll
ENGINEER OF DESIGN AND ENVIRONMENT

June 26, 2009
Christine M. Reed
DIRECTOR OF HIGHWAYS, CHIEF ENGINEER

**PRINTED BY THE AUTHORITY
OF THE STATE OF ILLINOIS**

SUMMARY OF QUANTITIES				I000
CODE #	PAY ITEM	UNITS	TOTAL	% STATE
20100110	TREE REMOVAL (6 TO 15 UNITS DIAMETER)	UNIT	6	
20200100	EARTH EXCAVATION	CU YD	2,232	
20400100	BORROW EXCAVATION	CU YD	5,305	
21101505	TOPSOIL EXCAVATION AND PLACEMENT	CU YD	1,042	
25000100	SEEDING, CLASS 1	ACRE	2.6	
25000400	NITROGEN FERTILIZER NUTRIENT	POUND	234	
25000500	PHOSPHORUS FERTILIZER NUTRIENT	POUND	234	
25000600	POTASSIUM FERTILIZER NUTRIENT	POUND	234	
25000700	AGRICULTURAL GROUND LIMESTONE	TON	5.2	
25100115	MULCH METHOD 2	ACRE	2.6	
28000300	TEMPORARY DITCH CHECKS	EACH	5	
28000500	INLET AND PIPE PROTECTION	EACH	1	
28100105	STONE RIPRAP, CLASS A3	SQ YD	3.5	

SUMMARY OF QUANTITIES				I000
CODE #	PAY ITEM	UNITS	TOTAL	% STATE
35101600	AGGREGATE BASE COURSE, TYPE B 4"	SQ YD	632	
35102000	AGGREGATE BASE COURSE, TYPE B 8"	TON	2,329	
40600100	BITUMINOUS MATERIALS (PRIME COAT)	GALLON	1,899	
40603085	HOT-MIX ASPHALT BINDER COURSE, IL 19.0, N70	TON	425	
40603315	HOT-MIX ASPHALT SURFACE COURSE, MIX "C", N70	TON	423	
42400200	PORTLAND CEMENT CONCRETE SIDEWALK 5 INCH	SQ FT	5,624	
42400800	DETECTABLE WARNING	SQ FT	104	
*44213200	SAW CUTS	FOOT	29	
48101500	AGGREGATE SHOULDERS, TYPE B 6"	SQ YD	104	
48203021	HOT-MIX ASPHALT SHOULDERS, 6"	SQ YD	40	
50300225	CONCRETE STRUCTURES	CU YD	1.49	
50800105	REINFORCEMENT BARS	POUND	75	
542A0220	PIPE CULVERTS, CLASS A, TYPE 1, 15"	FOOT	118	

SUMMARY OF QUANTITIES				I000
CODE #	PAY ITEM	UNITS	TOTAL	% STATE
54213450	END SECTIONS, 15"	EACH	1	
63500105	DELINEATORS	EACH	6	
67100100	MOBILIZATION	L SUM	1	
*70101830	TRAFFIC CONTROL AND PROTECTION, STANDARD BLR 21	L SUM	1	
72000100	SIGN PANEL - TYPE I	SQ FT	6	
73000100	WOOD SIGN SUPPORT	FOOT	30	
78001100	PAINT PAVEMENT MARKING - LETTERS AND SYMBOLS	SQ FT	13.8	
78001130	PAINT PAVEMENT MARKING - LINE 6"	FOOT	3,072	
*A2C00563	CONTAINER GROWN, 3 GALLON TREE, ACER SACCHARIUM (SUGAR MAPLE),	EACH	6	
*X0300019	REMOVE AND REINSTALL PARKING BLOCKS	EACH	4	
*X0301430	PRECAST CONCRETE PARKING BLOCK	EACH	36	
*XX002065	LIGHTING UNIT COMPLETE	EACH	4	
*XX005715	SEDIMENT CONTROL, STABILIZED CONSTRUCTION ENTRANCE	SQ YD	109	
*XX006277	TEMPORARY SEDIMENT TRAP	EACH	2	

LOCATION	PAVING SCHEDULE										
	EARTH EXCAVATION	BORROW EXCAVATION	BIT MATLS PR CT	HMA SC "C" N70	HMA BC IL-19.0 N70	AGG BASE CSE B 8	AGGREGATE SHLDS B 6	PC CONC SIDEWALK 5	DETECTABLE WARNINGS	AGG BASE CSE B 4	HMA SHOULDERS 6
	(CU YD)	(CU YD)	(GALLONS)	(TON)	(TON)	(SQ YD)	(SQ YD)	(SQ FT)	(SQ FT)	(SQ YD)	(SQ YD)
LEWIS & CLARK PARKING											
ENTIRE PROJECT	2,232	5,305									
STA. 12+30.00 TO STA. 14+30.29			791	176	177	970	62				
STA. 14+30.29 24' RT TO STA. 18+05.29 29' RT								1,875		208	
STA. 14+30.29 43' LT TO STA. 19+87.01 12' LT								2,683		298	
STA. 14+30.29 TO 18+05.29			941	210	211	1150	42				
STA. 14+91.31 26' RT TO STA. 14+98.31 24' RT									14		
STA. 14+91.31 36' LT TO STA. 14+98.31 38' LT									14	4	
STA. 16+13.31 26' RT TO STA. 16+20.31 24' RT									14		
STA. 16+13.31 36' LT TO STA. 16+20.31 38' LT									14	4	
STA. 17+35.29 26' RT TO STA. 17+42.29 24' RT									14		
STA. 17+35.29 36' LT TO STA. 17+42.29 38' LT									14	4	
STA. 18+05.29 TO STA. 19+86.88			167	37	37	209					40
STA. 19+85.02 12' LT TO STA. 19+87.02 17' LT									10		
STA. 20+48.29 13.5' LT TO STA. 20+50.26 18.5' LT									10		
STA. 20+48.29 19' LT TO STA. 22+53.12 12' LT								1,024		114	
TOTAL =	2,232	5,305	1,899	423	425	2,329	104	5624	104	632	40

SPECIALTY ITEMS

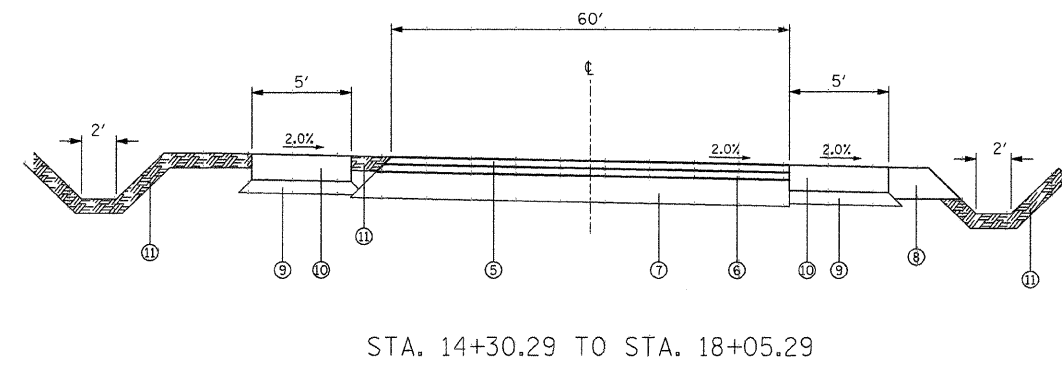
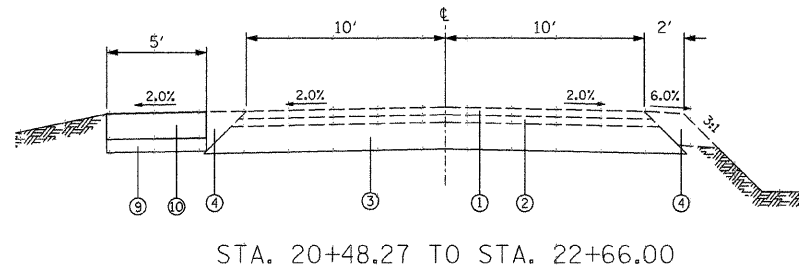
PAVEMENT MARKING SCHEDULE		
LOCATION	PT PVT MK LTRS & SYMB	PAINT PVT MK LINE 6
	(SQ. FT.)	(FOOT)
LEWIS & CLARK PARKING		
HANDICAP SYMBOLS	13.8	
PARKING STRIPES		684
STA. 13+43.27, 12.8' RT TO STA. 14+30.29, 24' RT		448
STA. 14+75.29, 18' LT TO STA. 14+83.29, 36' LT		124
STA. 14+91.31, 24' RT TO STA. 14+98.31, 36' LT		344
STA. 15+97.29, 18' LT TO STA. 16+05.29, 36' LT		124
STA. 16+13.31, 24' RT TO STA. 16+20.31, 36' LT		344
STA. 17+19.29, 18' LT TO STA. 17+27.29, 36' LT		124
STA. 17+35.29, 24' RT TO STA. 17+42.29, 36' LT		344
STA. 18+05.29, 24' RT TO STA. 18+54.16, 10' RT		250
STA. 19+87.02, 12' LT TO STA. 20+48.29, 18.5, LT		286
TOTAL =	13.8	3,072
NOTE: LETTERS AND SYMBOLS HANDICAP SYMBOL = 4.6 SQ FT		

LOCATION (STATION TO STATION)	MISCELLANEOUS ITEMS																
	REM REIN PARKING BLKS	PIPE CULVERTS 15"	SAW CUTS	PRECAST CONC PRK BLKS	END SECTIONS 15"	STONE RIPRAP CLASS A3	TRAF CONT & PROT BLR 21	SIGN PANELS T-1	WOOD SIN SUPPORT	TEMP DITCH CHECKS	INLET & PIPE PROTECT	SED CON STA CNST ENT	TEMP SEDIMENT TRAP	CONC STRUCT	REINFORCEMENT BARS	DELINEATORS	LIGHTING UNIT COMP
	(EACH)	(FOOT)	(FOOT)	(EACH)	(EACH)	(SQ YD)	(L SUM)	(SQ FT)	(FOOT)	(EACH)	(EACH)	(SQ YD)	(EACH)	(CU YD)	(POUND)	(EACH)	(EACH)
LEWIS & CLARK PARKING																	
ENTIRE PROJECT				36			1					109					4
STA. 12+51.84' 117.51' LT										1							
STA. 12+75.30' 130.90' RT										1							
STA. 12+79.38' 30.62' RT													1	1.49	75	2	
STA. 13+00.28' 42.99' RT																	
STA. 13+00.28' 42.99' RT TO STA 13+44.26 152.60' RT		118															
STA. 13+18+.23' 32.98' RT													1				
STA. 13+44.26 152.60' RT					1	3.5										4	
STA. 14+31.50' 96.41' LT													1				
STA. 14+83.29 37' LT											2	10					
STA. 15+64.89' 133+34' LT											2	10					
STA. 16+05.29, 37' LT											2	10					
STA. 17+16.57' 45.90' RT											2	10					
STA. 17+27.29, 37' LT																	
STA. 19+87.02 10' LT & RT			29														
STA. 19+87.84 3.52' LT	1																
STA. 19+87.84 5.57' RT	1																
STA. 19+87.84 12.45' LT	1																
STA. 20+47.33 17.56' LT	1																
TOTAL =	4	118	29	36	1	3.5	1	6	30	5	1	109	2	1.49	75	6	4

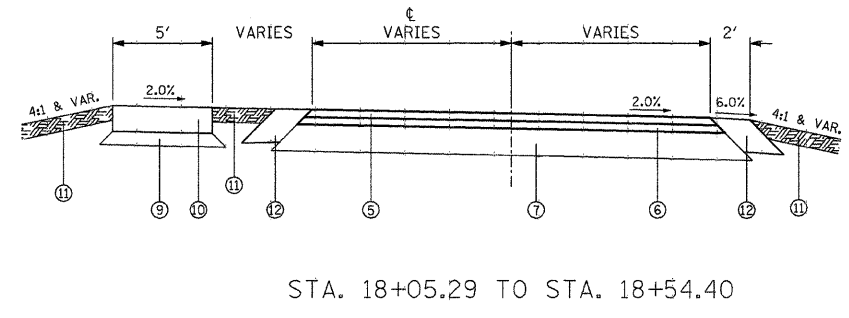
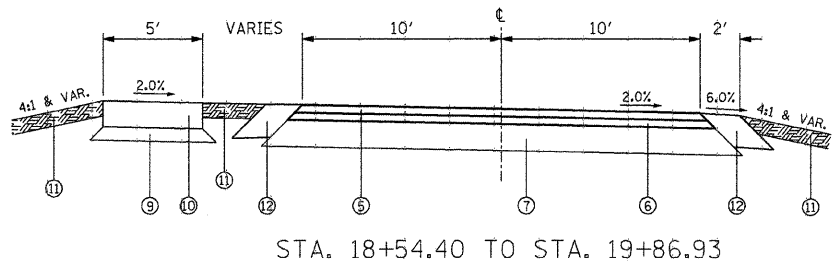
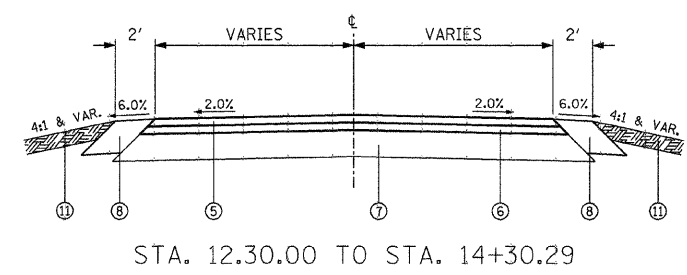
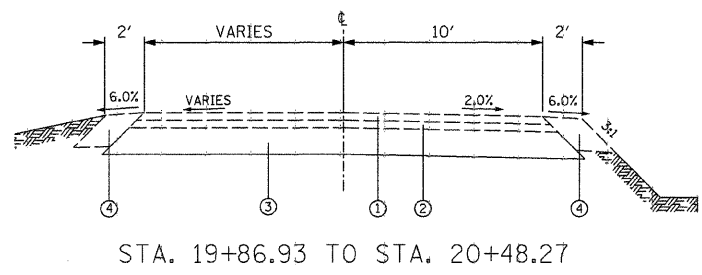
MOBILIZATION	
LOCATION	QUANTITY (LSUM)
ENTIRE PROJECT	1 LSUM
TOTAL =	1 LSUM

TREE ITEMS		
LOCATION (STATION TO STATION)	TREE REMOV 6 TO 15	T-ACER SACCHAR CG 3G
	(UNIT)	(EACH)
STA. 19+80.08 2.64' RT	6	
ENTIRE SITE COORDINATE WITH SITE PERSONNEL		6
TOTAL =	6	6

FILE NAME =	USER NAME = *USER*	DESIGNED - R.H.D.	REVISED -	STATE OF ILLINOIS DEPARTMENT OF TRANSPORTATION				SUMMARY/SCHEDULE OF QUANTITIES LEWIS & CLARK STATE HISTORIC SITE				F.A. RTE.	SECTION	COUNTY	TOTAL SHEETS	SHEET NO.			
*FILE#		DRAWN - S.D.K.	REVISED -																
	PLOT SCALE = *SCALE*	CHECKED - R.H.D.	REVISED -																
	PLOT DATE = *DATE*	DATE - 4/8/09	REVISED -																
												SCALE:		SHEET NO. 2 OF 13 SHEETS		STA. TO STA.		FED. ROAD DIST. NO. [ILLINOIS] FED. AID PROJECT	



- LEGEND**
- ① BITUMINOUS CONCRETE SURFACE COURSE
 - ② BITUMINOUS CONCRETE BINDER COURSE
 - ③ AGGREGATE BASE COURSE
 - ④ AGGREGATE SHOULDERS
 - ⑤ HOT MIX ASPHALT SURFACE COURSE, TYPE "C" N70, 1 1/2 INCH
 - ⑥ HOT MIX ASPHALT BINDER COURSE, IL-19.0, N70, 1 1/2 INCH
 - ⑦ AGGREGATE BASE COURSE, TYPE B, 8"
 - ⑧ AGGREGATE SHOULDERS, TYPE B, 6"
 - ⑨ AGGREGATE BASE COURSE, TYPE B, 4"
 - ⑩ PORTLAND CEMENT CONCRETE SIDEWALK, 4"
 - ⑪ TOPSOIL, 4"
 - ⑫ HOT-MIX ASPHALT SHOULDERS, 6"



SEEDING SCHEDULE							
LOCATION (STATION TO STATION)	TOPSOIL EXC & PLAC (CU YD)	SEEDING CL 1 (ACRE)	NITROGEN FERT NUTR (LBS.)	PHOSPHORUS FERT NUTR (LBS.)	POTASSIUM FERT NUTR (LBS.)	AGR GROUND LIMESTONE (TON)	MULCH METHOD 2 (ACRE)
LEWIS & CLARK PARKING							
ENTIRE PROJECT	1,042	2.6	234	234	234	5.2	2.6
TOTAL =	1,042	2.6	234	234	234	5.2	2.6

MIXES AND APPLICATION RATE TABLES

MIXTURES USE(S):	BITUMINOUS SURFACE
AC/PG	PG 64-22
RAP% (MAX)	10%
DESIGN AIR VOIDS	4.0% @ N DESIGN 70
MIX COMP	IL 9.5
FRICTION AGG.	MIX C

GENERAL NOTES

- 1) ALL ELEVATIONS ARE REFERENCED TO ELEVATIONS ESTABLISHED BY VASCONCELLES ENGINEERING CORP.
- 2) WHERE SECTION OR SUBSECTION MONUMENTS ARE ENCOUNTERED, THE ENGINEER SHALL BE NOTIFIED BEFORE SUCH MONUMENTS ARE REMOVED. THE CONTRACTOR SHALL PROTECT AND CAREFULLY PRESERVE ALL PROPERTY MARKERS AND MONUMENTS UNTIL THE OWNER AND AUTHORIZED SURVEYOR OR AGENT HAS WITNESSED OR OTHERWISE REFERENCED THEIR LOCATION. IF THE ENGINEER DECIDES TO HAVE THE CONTRACTOR RESET THE MONUMENT, THIS WORK WILL BE PAID FOR IN ACCORDANCE WITH ARTICLE 109.04.
- 3) THE CONTRACTOR SHALL CONTACT J.U.L.I.E. PRIOR TO ANY EXCAVATION TO HAVE ALL PUBLIC AND PRIVATE UTILITIES LOCATED.
- 4) THE CONTRACTOR SHALL BE RESPONSIBLE FOR PROTECTING UTILITY PROPERTY FROM CONSTRUCTION OPERATIONS AS OUTLINED IN ARTICLE 107.26 OF THE STANDARD SPECIFICATIONS. THE J.U.L.I.E. NUMBER IS (800) 892-0123. A MINIMUM OF 48 HOURS ADVANCE NOTICE IS REQUIRED. SEE SPECIAL PROVISIONS FOR STATUS OF UTILITIES, WITH UTILITY COMPANIES LISTED.
- 5) ANY REFERENCE TO THE STANDARDS THROUGHOUT THE PLANS SHALL BE INTERPRETED TO BE THE LATEST STANDARDS OF THE DEPARTMENT AS INCLUDED IN THE PLANS.
- 6) ALL DETAILS IN THE PLANS SHALL GOVERN CONSTRUCTION OF THIS PROJECT, AND IN CASE OF CONFLICT WITH ANY STANDARD DRAWINGS INCLUDED, THE SAID DETAILS SHALL TAKE PRECEDENCE AND GOVERN.

LIST OF STANDARDS

- 280001-04 TEMPORARY EROSION CONTROL SYSTEMS
- 424001-05 CURB RAMPS FOR SIDEWALKS
- 542301-02 PRECAST REINFORCED CONCRETE FLARED END SECTION
- 701006-03 OFF-RD OPERATIONS, 2L, 2W, 15' (4.5M) TO 24" (600MM) FROM PAVEMENT EDGE
- 701301-03 LANE CLOSURE, 2L, 2W, SHORT TIME OPERATIONS
- 701901-01 TRAFFIC CONTROL DEVICES
- BLR 21-8 TYPICAL APPLICATION OF TRAFFIC CONTROL DEVICES FOR CONSTRUCTION ON RURAL LOCAL HIGHWAYS

FILE NAME =	USER NAME = #USER#	DESIGNED - R.H.D.	REVISED -
#FILEL#		DRAWN - S.D.K.	REVISED -
		CHECKED - R.H.D.	REVISED -
		DATE - 4/8/09	REVISED -

STATE OF ILLINOIS
DEPARTMENT OF TRANSPORTATION

TYPICAL SECTIONS, STANDARDS, SCHEDULES & GENERAL DETAILS
LEWIS & CLARK STATE HISTORIC SITE

F.A. RTE.	SECTION	COUNTY	TOTAL SHEETS	SHEET NO.
		MADISON	13	3
CONTRACT NO. 4606/				
FED. ROAD DIST. NO. ILLINOIS FED. AID PROJECT				

V.E.C. CONTROL POINT #1
N = 777409.11
E = 2315140.99

V.E.C. CONTROL POINT #2
N = 777645.73
E = 2315223.49

V.E.C. CONTROL POINT #3
N = 778081.82
E = 2315618.58

STATION 10+00
N = 776462.17
E = 2315057.92

P.C. STATION 18+09.28
N = 777241.18
E = 2315277.19

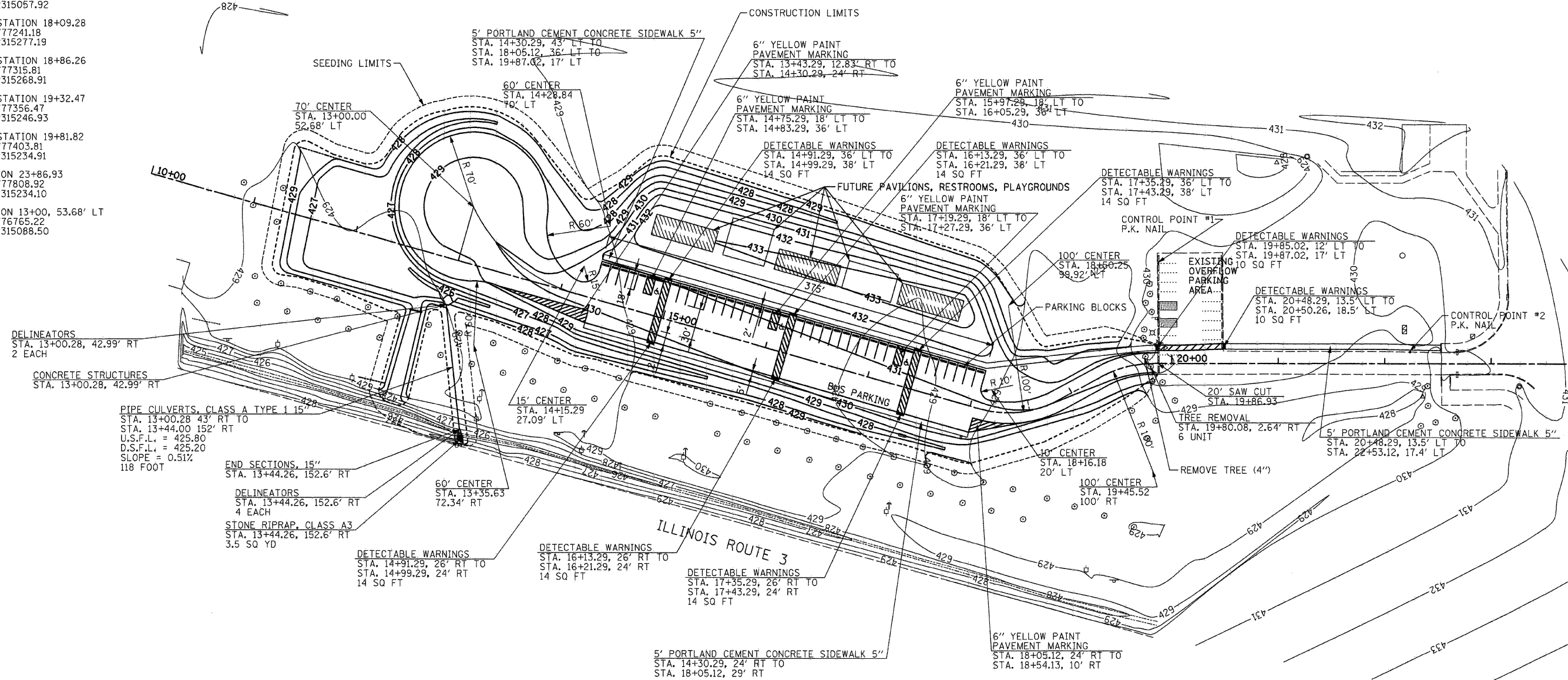
P.T. STATION 18+86.26
N = 777315.81
E = 2315268.91

P.C. STATION 19+32.47
N = 777356.47
E = 2315246.93

P.T. STATION 19+81.82
N = 777403.81
E = 2315234.10

STATION 23+86.93
N = 777808.92
E = 2315234.10

STATION 13+00, 53.68' LT
N = 776765.22
E = 2315088.50



DELINEATORS
STA. 13+00.28, 42.99' RT
2 EACH

CONCRETE STRUCTURES
STA. 13+00.28, 42.99' RT

PIPE CULVERTS, CLASS A TYPE 1 15"
STA. 13+00.28 43' RT TO
STA. 13+44.00 152' RT
U.S.F.L. = 425.80
D.S.F.L. = 425.20
SLOPE = 0.51%
116 FOOT

END SECTIONS, 15"
STA. 13+44.26, 152.6' RT

DELINEATORS
STA. 13+44.26, 152.6' RT
4 EACH

STONE RIPRAP, CLASS A3
STA. 13+44.26, 152.6' RT
3.5 SQ YD

DETECTABLE WARNINGS
STA. 14+91.29, 26' RT TO
STA. 14+99.29, 24' RT
14 SQ FT

DETECTABLE WARNINGS
STA. 16+13.29, 26' RT TO
STA. 16+21.29, 24' RT
14 SQ FT

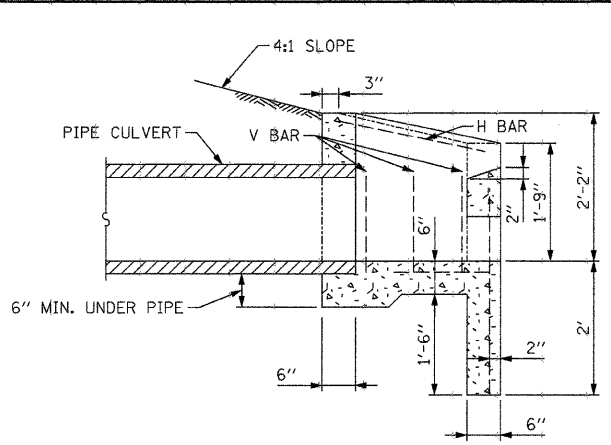
DETECTABLE WARNINGS
STA. 17+35.29, 26' RT TO
STA. 17+43.29, 24' RT
14 SQ FT

5' PORTLAND CEMENT CONCRETE SIDEWALK 5"
STA. 14+30.29, 24' RT TO
STA. 18+05.12, 29' RT

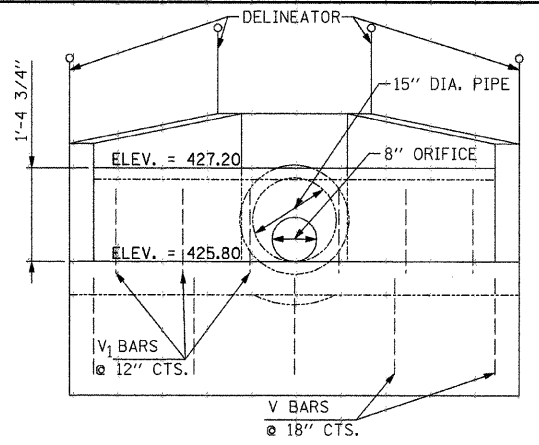
6" YELLOW PAINT PAVEMENT MARKING
STA. 18+05.12, 24' RT TO
STA. 18+54.13, 10' RT

CONTAINER GROWN, 3 GALLON ACER SACCHARIUM (SUGAR MAPLE) TREES TO BE PLANTED IN COORDINATION WITH SITE PERSONNEL

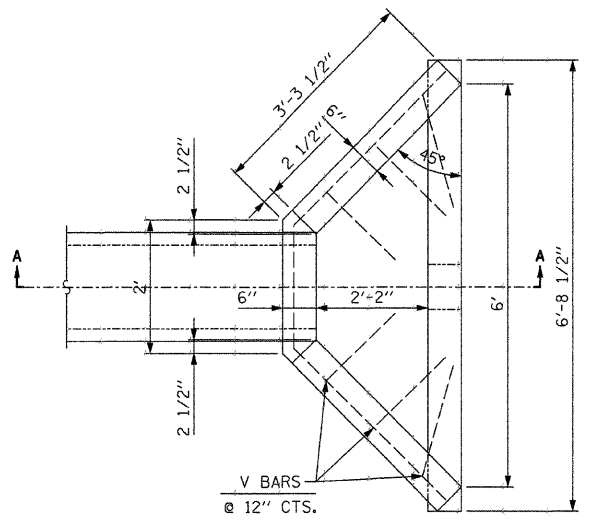
FILE NAME =	USER NAME = #USER#	DESIGNED - R.H.D.	REVISED -	STATE OF ILLINOIS DEPARTMENT OF TRANSPORTATION		PROPOSED LAYOUT LEWIS AND CLARK STATE HISTORIC SITE			F.A. RTE.	SECTION	COUNTY	TOTAL SHEETS	SHEET NO.
#FILEL#		DRAWN - S.D.K.	REVISED -										
	PLOT SCALE = #SCALE#	CHECKED - R.H.D.	REVISED -	SCALE: 1"=50'		SHEET NO. 4 OF 13 SHEETS			STA. TO STA.			FED. ROAD DIST. NO. ILLINOIS FED. AID PROJECT	
	PLOT DATE = #DATE#	DATE - 4/8/09	REVISED -										



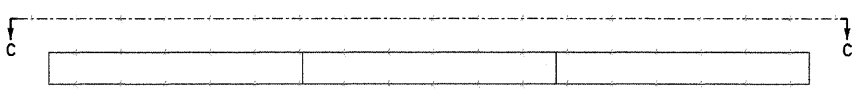
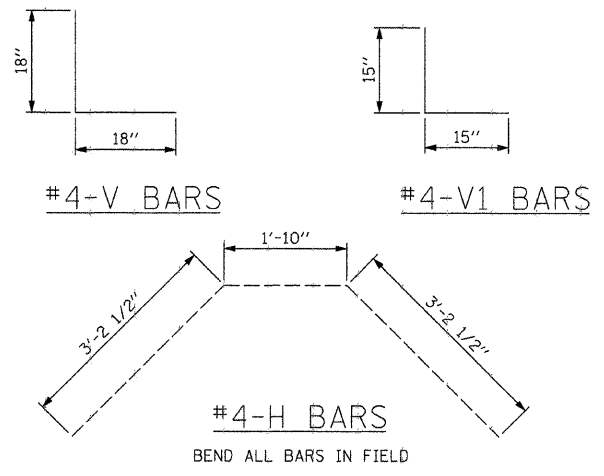
SECTION A-A



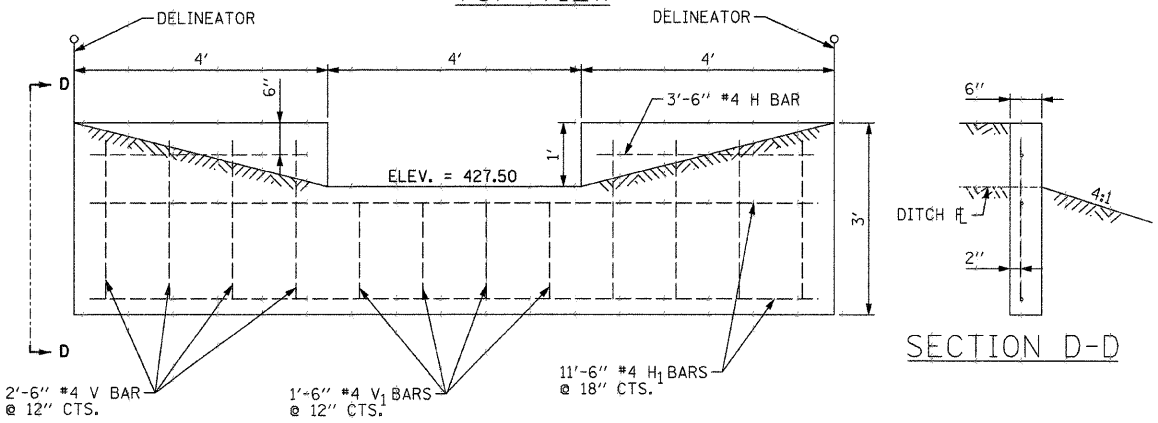
END VIEW



PLAN



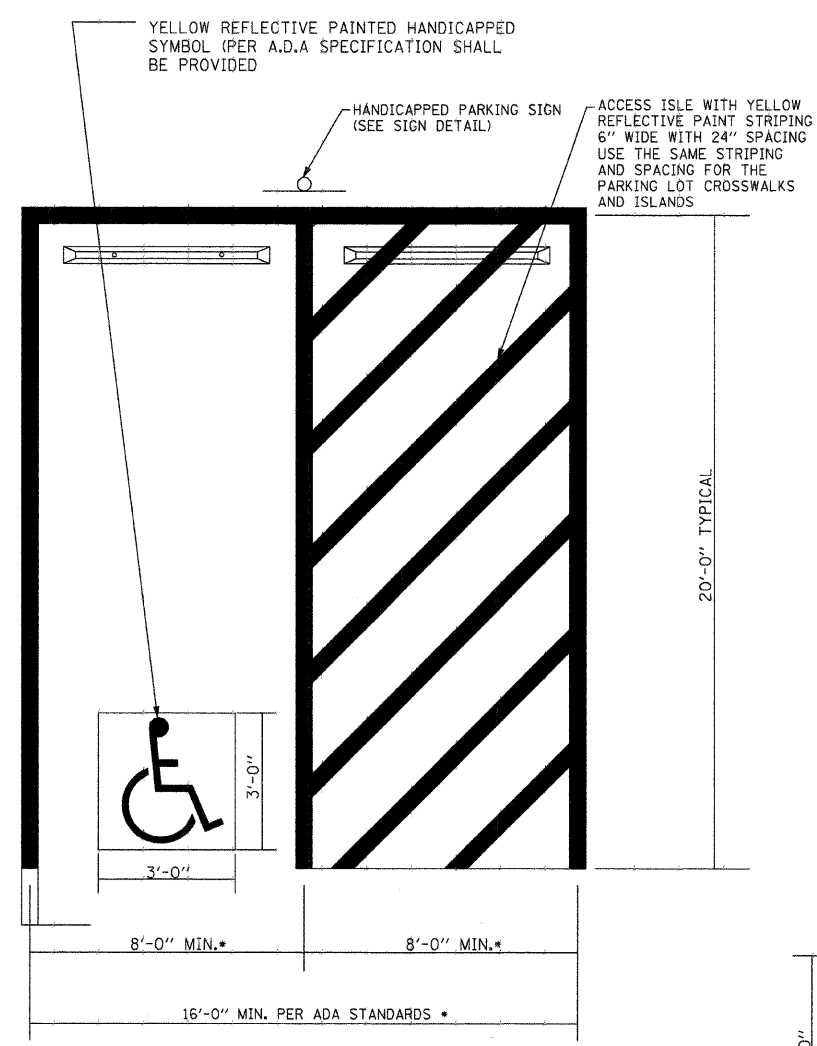
TOP VIEW



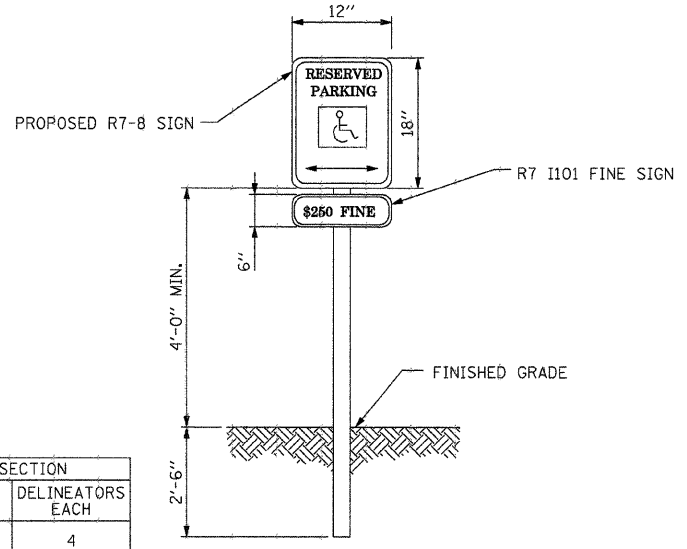
SECTION C-C

REIN. CONC. END SECTION		
CONC. CU. YDS.	RE-BARS LBS.	DELINEATORS EACH
0.89	38	4

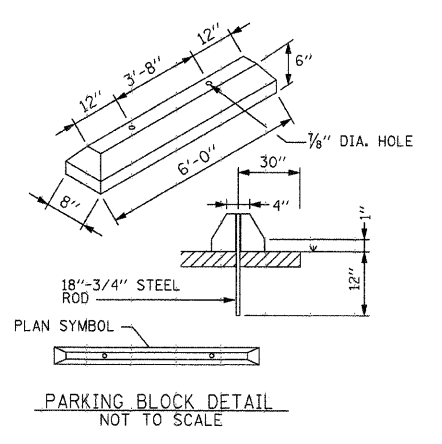
OVERFLOW WEIR		
CONC. CU. YDS.	RE-BARS LBS.	DELINEATORS EACH
0.60	37	2



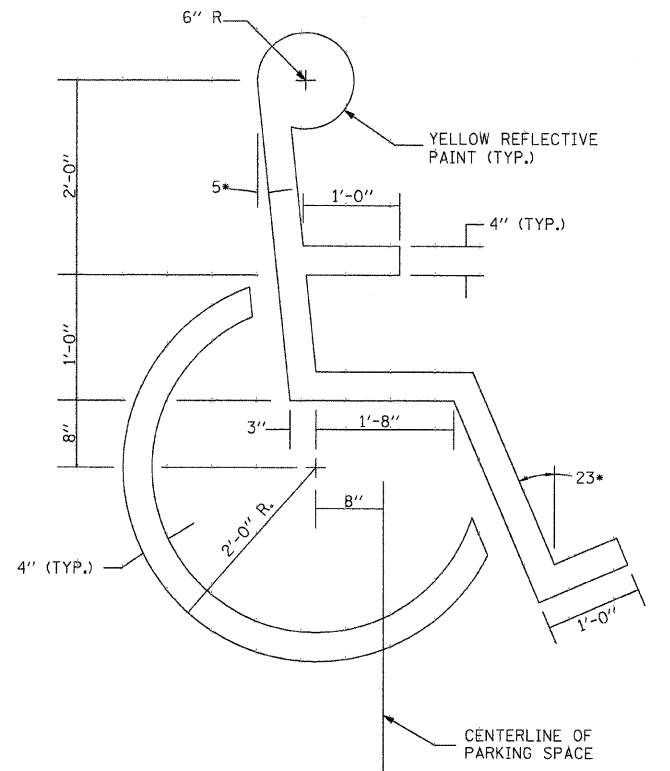
* SEE PLANS TO VERIFY DIMENSIONS



HANDICAPPED PARKING SIGNS NOT TO SCALE



PARKING BLOCK DETAIL NOT TO SCALE



HANDICAPPED SYMBOL LAYOUT DETAIL NOT TO SCALE

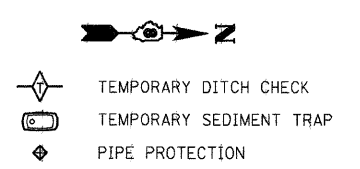
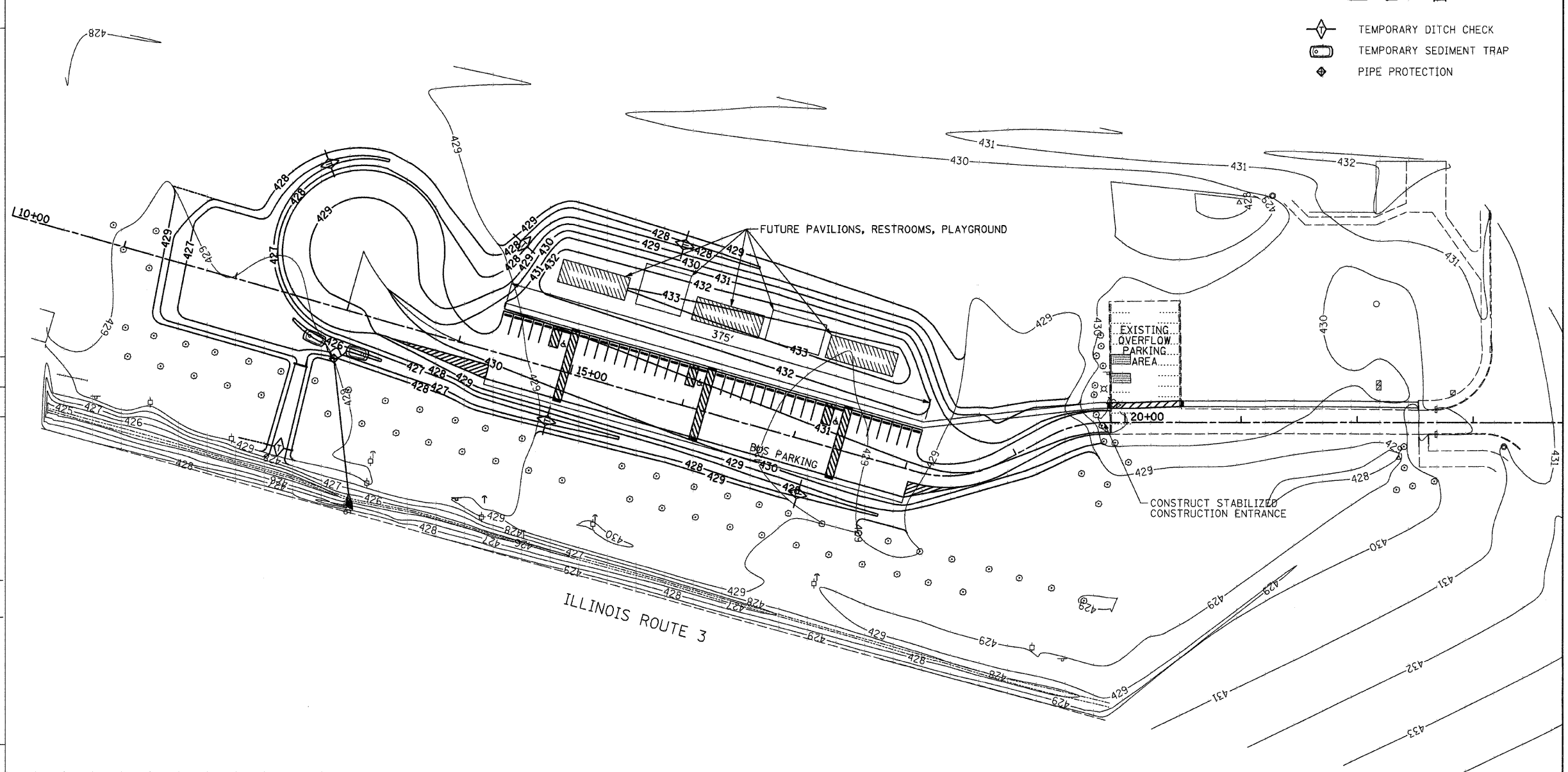
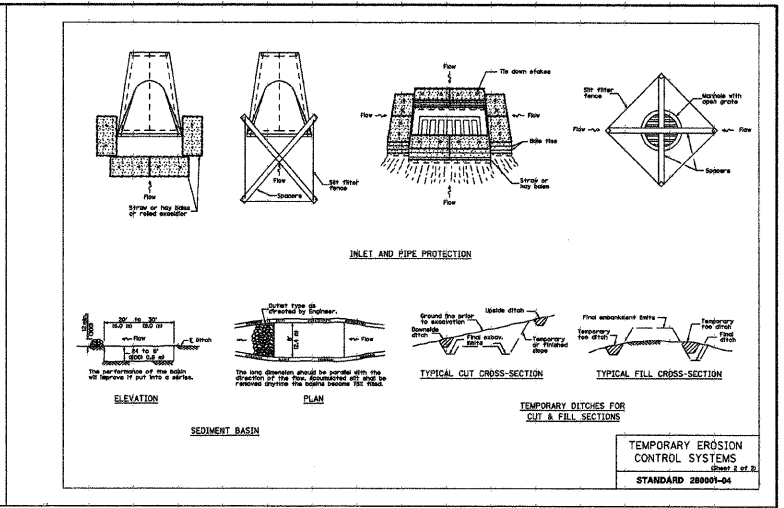
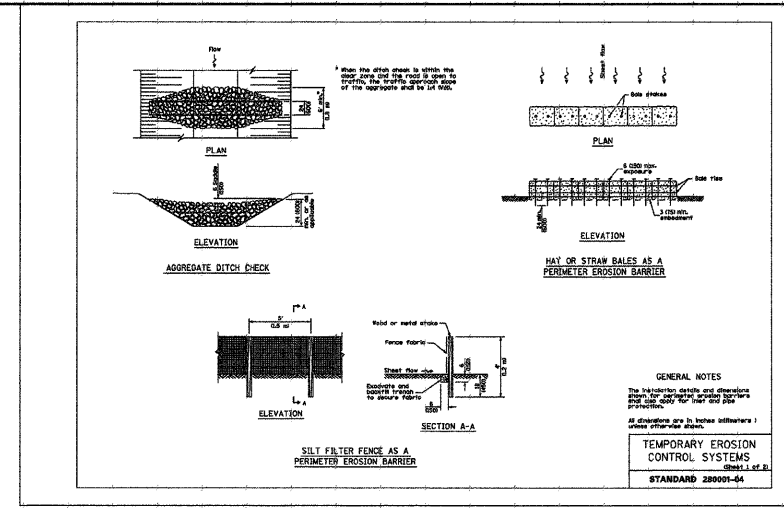
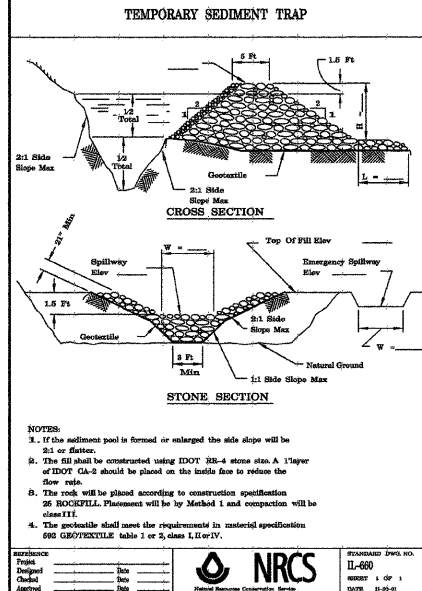
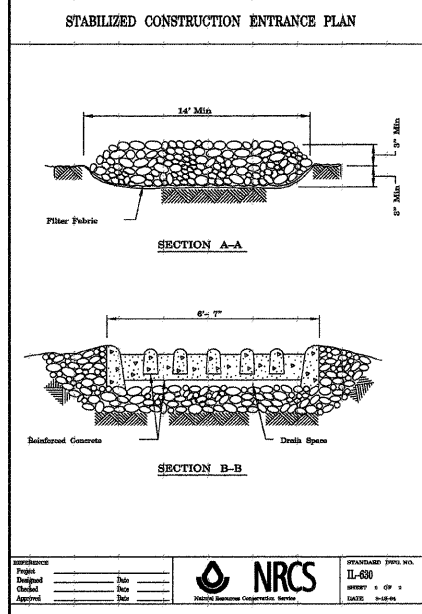
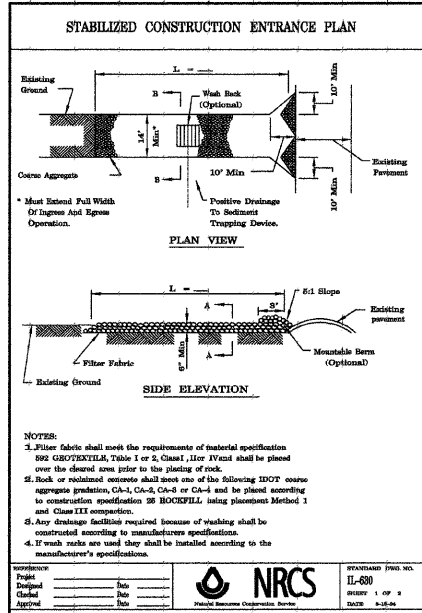
FILE NAME = #FILE#	USER NAME = #USER#	DESIGNED - R.H.D.	REVISED -
		DRAWN - S.D.K.	REVISED -
		CHECKED - R.H.D.	REVISED -
		DATE - 4/8/09	REVISED -

STATE OF ILLINOIS
DEPARTMENT OF TRANSPORTATION

DETAILS
LEWIS AND CLARK STATE HISTORIC SITE

F.A. RTE.	SECTION	COUNTY	TOTAL SHEETS	SHEET NO.
		MADISON	13	5
CONTRACT NO. 4606/				
FED. ROAD DIST. NO. [ILLINOIS] FED. AID PROJECT				

SCALE: 1"=50' SHEET NO. 5 OF 13 SHEETS STA. TO STA.



FILE NAME = _____

#FILE#

USER NAME = #USER#

DESIGNED - R.H.D.

DRAWN - S.D.K.

CHECKED - R.H.D.

DATE - 4/8/09

REVISED -

REVISED -

REVISED -

REVISED -

DESIGNED - R.H.D.	REVISED -
DRAWN - S.D.K.	REVISED -
CHECKED - R.H.D.	REVISED -
DATE - 4/8/09	REVISED -

STATE OF ILLINOIS
DEPARTMENT OF TRANSPORTATION

EROSION CONTROL PLAN
LEWIS AND CLARK STATE HISTORIC SITE

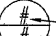



SCALE: 1"=50'

SHEET NO. 6 OF 13 SHEETS

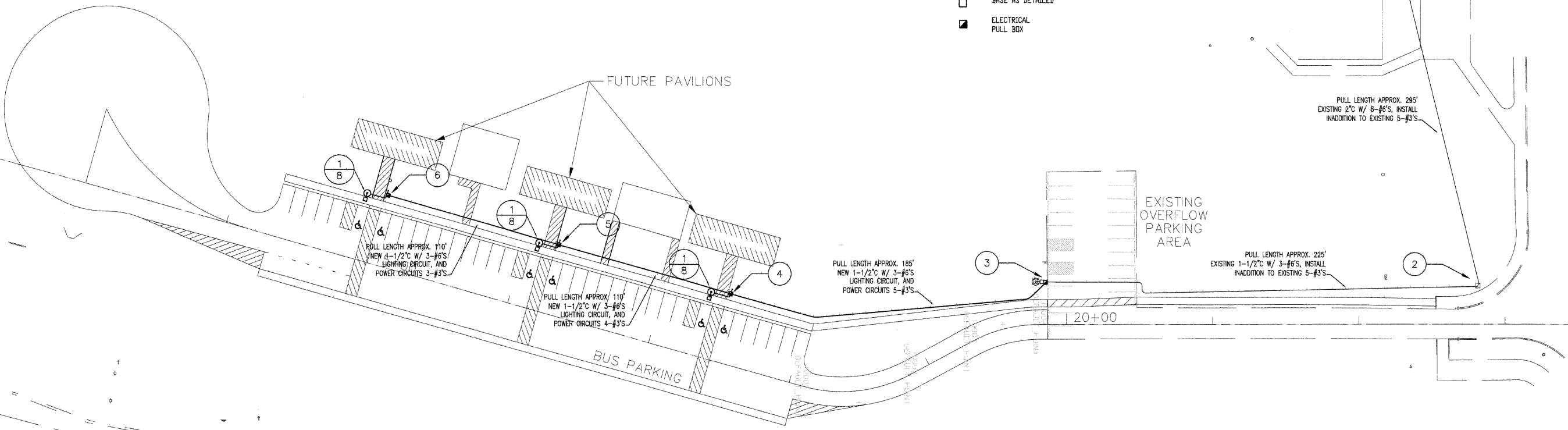
STA. TO STA.

F.A. RTE.	SECTION	COUNTY	TOTAL SHEETS	SHEET NO.
		MADISON	13	6
CONTRACT NO. 4606/				
FED. ROAD DIST. NO. ILLINOIS FED. AID PROJECT				

ELECTRICAL NOTE AND TAG LEGEND

-  DETAIL TAG
DETAIL NUMBER
SHEET DETAIL IS SHOWN ON
-  ELECTRICAL CONSTRUCTION NOTE
-  FIXTURE, POLE AND
BASE AS DETAILED
-  ELECTRICAL
PULL BOX

1



TAGGED ELECTRICAL CONSTRUCTION NOTES:

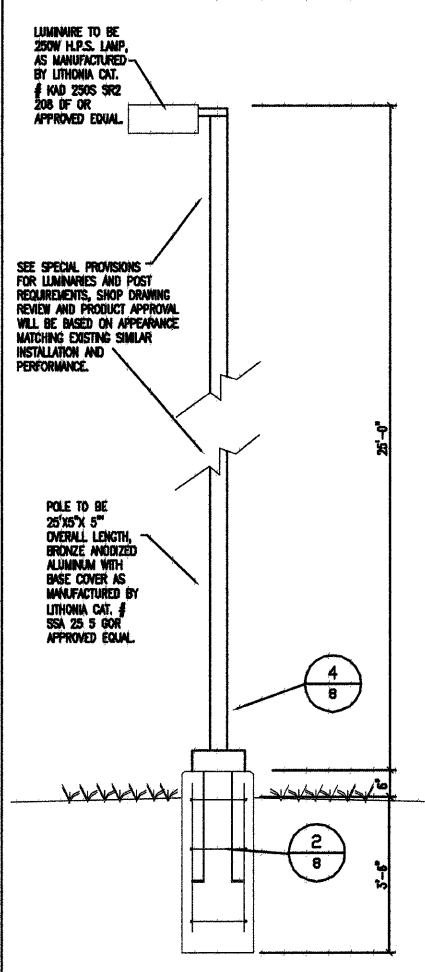
1. EXISTING LEWIS AND CLARK VISITORS CENTER. CIRCUITS ORIGINATE IN ELECTRICAL ROOM. EXISTING PANEL "LP" (FIELD VERIFY). FURNISH ALL LABOR AND MATERIAL AS REQUIRED TO INSTALL (3) 1P20A CIRCUIT BREAKERS IN A 120/208V PANEL WITH AVAILABLE SPACE. EXTEND NEW 5-#3'S POWER CIRCUITS IN EXISTING 2" SITE LIGHTING CONDUIT WITH EXISTING 6-#6'S TO SERVE NEW FUTURE PAVILIONS. SEE ONE LINE DIAGRAM. UPDATE PANEL INDEX.
2. EXISTING PULL BOX. CONTINUE NEW 5-#3'S POWER CIRCUITS THROUGH PULL BOX TO NEW PULL BOX "PB-1" AT BASE OF EXISTING POLE.
3. INTERCEPT EXISTING CONDUIT NEAR BASE OF POLE AND INSTALL NEW PULL BOX "PB-1". REWORK LIGHTING CIRCUIT AND EXTEND TO RECONNECT EXISTING SITE LIGHTING POLE, FEEDING FROM EXISTING CIRCUIT. EXTEND EXISTING LIGHTING CIRCUIT WITH NEW 3-#6'S AND NEW 5-#3'S POWER CIRCUITS IN NEW 1-1/2" CONDUIT TO PULL BOX "PB-2".
4. INSTALL NEW PULL BOX "PB-2". TAP LIGHTING CIRCUIT AND EXTEND TO NEW SITE LIGHTING POLE USING 3-#10'S, 1" C. LOOP ALL CIRCUITS. TERMINATE ONE POWER CIRCUIT AND EXTEND NEW LIGHTING CIRCUIT AND 4-#3'S POWER CIRCUITS IN NEW 1-1/2" CONDUIT TO PULL BOX "PB-3".
5. INSTALL NEW PULL BOX "PB-3". TAP LIGHTING CIRCUIT AND EXTEND TO NEW SITE LIGHTING POLE USING 3-#10'S, 1" C. LOOP ALL CIRCUITS. TERMINATE ONE POWER CIRCUIT AND EXTEND NEW LIGHTING CIRCUIT AND 3-#3'S POWER CIRCUITS IN NEW 1-1/2" CONDUIT TO PULL BOX "PB-4".
6. INSTALL NEW PULL BOX "PB-4". TAP LIGHTING CIRCUIT AND EXTEND TO NEW SITE LIGHTING POLE USING 3-#10'S, 1" C. LOOP ALL CIRCUITS. TERMINATE POWER CIRCUIT.

GENERAL ELECTRICAL CONSTRUCTION NOTES:

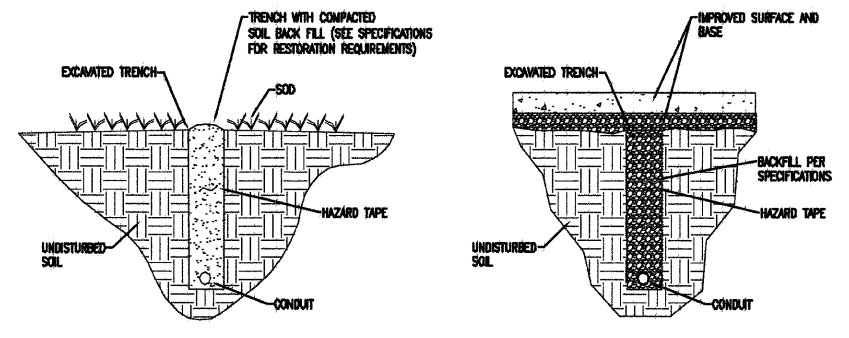
- 1) CONTRACTOR SHALL CUT AND PATCH AS REQUIRED DURING THE COURSE OF INSTALLATION OR AS SPECIFIED ON THE DRAWINGS.
- 2) ALL NEW ELECTRICAL WORK SHALL BE INSTALLED IN ACCORDANCE WITH THE LATEST EDITION OF THE NATIONAL ELECTRICAL CODE AND ALL OTHER LOCAL, STATE AND NATIONAL CODES WHICH APPLY AS INTERPRETED I.D.O.T..
- 3) ALL WORK IS TO BE COORDINATED WITH ALL OTHER TRADES ON THIS PROJECT AND ELECTRICAL WORK INSTALLED IN A NEAT AND ORDERLY FASHION.
- 4) THE ELECTRICAL DRAWINGS ARE SCHEMATIC AND SHOW THE GENERAL ARRANGEMENT OF EQUIPMENT. THE DRAWINGS SHALL NOT BE SCALED TO DETERMINE EQUIPMENT CONNECTION OR ROUGH-IN. REFER TO EQUIPMENT CUT-SHEETS AND RESPONSIBLE TRADES.
- 5) ALL CONDUCTORS OF THE ELECTRICAL SYSTEM SHALL BE COPPER, 600V, XLP - TYPE USE.
- 6) ALL CONDUIT SHALL BE MINIMUM 3/4" TRADE SIZE, EMT WHEN INSTALLED INDOORS IN DRY LOCATIONS, RMC WHEN INSTALLED OUTDOOR OR INDOORS IN DAMP/WET LOCATIONS, RMC, LFNC WHEN EXPOSED OUTDOORS AND, RMC OR RMC-40 WHEN INSTALLED IN CONCRETE OR BELOW GRADE. FINAL CONNECTIONS TO ALL EQUIPMENT, WHICH PRODUCE VIBRATION SHALL BE WITH FLEXIBLE NON-METALIC CONDUIT SUITABLE FOR THE SURROUNDING ENVIRONMENT. CONDUIT TURNING UP FROM BELOW GRADE OR FROM WITHIN CONCRETE SHALL BE RMC.
- 7) RACEWAY FILL, WHEN RACEWAY SIZE IS NOT SPECIFICALLY INDICATED, SHALL BE BASED ON APPLICABLE ARTICLES OF THE NEC.
- 8) CIRCUIT ROUTING, IN GENERAL, IS NOT SPECIFIED UNLESS SPECIFIC REQUIREMENTS EXIST. ROUTING OF CIRCUITS WILL HAVE EFFECTS ON CIRCUIT VOLTAGE DROPS. CONTRACTOR SHALL COORDINATE ROUTING LENGTH WITH CONNECTED LOAD AND ADJUST CONDUCTOR SIZE FOR A VOLTAGE DROP LESS THAN 3%.
- 9) ALL CONDUITS SHALL BE INSTALLED CONCEALED IN SPACES OF NEW CONSTRUCTION, WHICH ARE TYPICALLY OCCUPIED. CONTRACTOR SHALL COORDINATE THE LOCATION OF ALL EQUIPMENT WITH EXISTING CONDITIONS TO MAINTAIN ACCESS REQUIRED BY THE N.E.C. AND EQUIPMENT MANUFACTURERS.
- 10) SERVICE VOLTAGE AND ELECTRICAL REQUIREMENTS OF ALL EQUIPMENT SHALL BE VERIFIED BY THE CONTRACTOR PRIOR TO ELECTRICAL ROUGH-IN. DISCREPANCIES BETWEEN THE ELECTRICAL DRAWINGS AND EQUIPMENT REQUIREMENTS SHALL BE REPORTED TO THE ENGINEER BEFORE ANY ASSOCIATED WORK IS INSTALLED.
- 13) INDEXES OF ELECTRICAL PANELS SHALL BE REVISED TO REFLECT COMPLETED WORK.
- 15) CONTRACTOR SHALL REFERENCE THE PROJECT SITE PLANS FOR ELECTRIC, TELEPHONE, CABLE T.V. AND ALL OTHER UTILITIES. EXECUTION OF NEW WORK SHALL BE COMPLETED TO AVOID AND PROTECT EXISTING UTILITIES. ANY DAMAGE TO EXISTING UTILITIES AS THE RESULT OF THIS PROJECT SHALL BE REPAIRED OR REPLACED BY THE CONTRACTOR NO COST TO THE DEPARTMENT.
- 16) ALL CIRCUIT IN EACH PULL BOX SHALL BE TAGGED TO INDICATE VOLTAGE CLASS, USE, PANEL AND CIRCUIT DESIGNATION. TAGS SHALL BE SUITABLE FOR DIRECT BURIAL, WEATHERPROOF.

SCHEDULE OF ITEMS FOR LIGHTING UNIT COMPLETE:

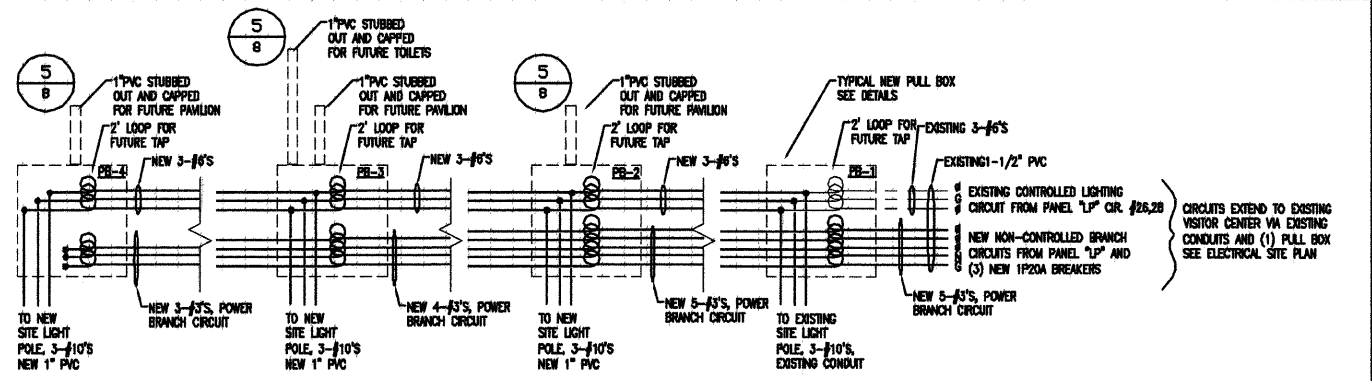
Item:	Qty.	Unit
CONDUIT IN TRENCH, 1 1/2" DIA., PVC	430	ft
CONDUIT IN TRENCH, 1" DIA., PVC	35	ft
HEAVY-DUTY HANDHOLE	4	ea
ELECTRIC CABLE IN CONDUIT, 600V (XLP-TYPE USE) 1/C NO. 6	1400	ft
ELECTRIC CABLE IN CONDUIT, 600V (XLP-TYPE USE) 1/C NO. 3	4900	ft
TRENCH AND BACKFILL FOR ELECTRICAL WORK	465	ft
LIGHTING UNIT	3	ea



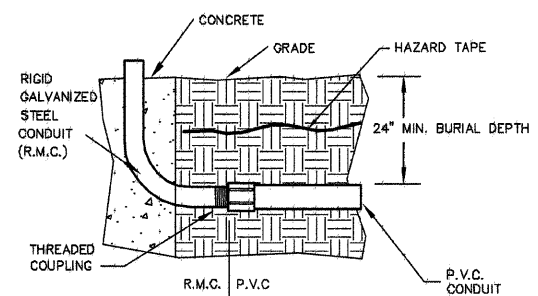
1 SITE LIGHTING POST DETAIL
NO SCALE



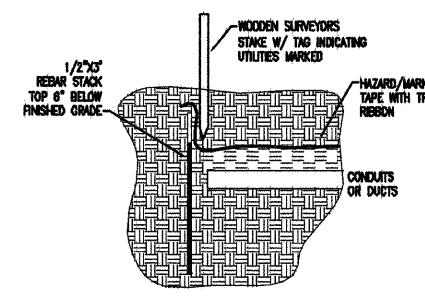
TYPICAL CONDUIT TRENCHING DETAILS
NO SCALE



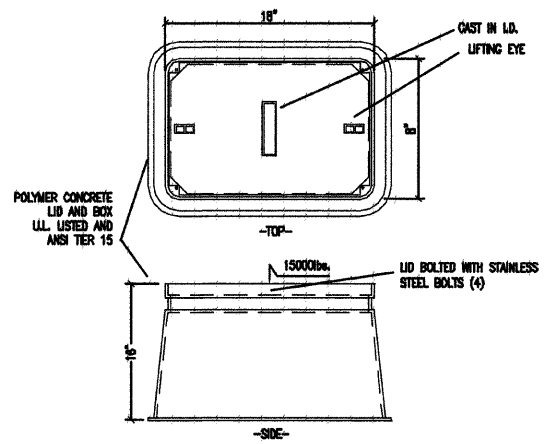
ONE LINE CIRCUIT DIAGRAM
NO SCALE



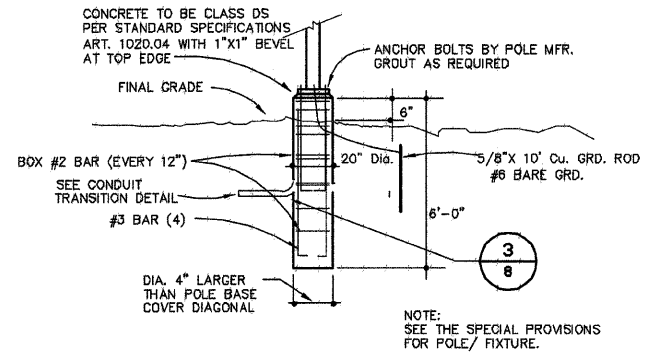
3 TYPICAL CONDUIT TRANSITION
NO SCALE



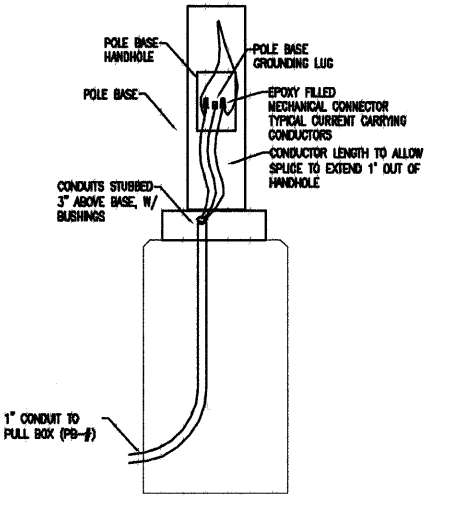
5 EMPTY CONDUIT TERMINATION
NO SCALE



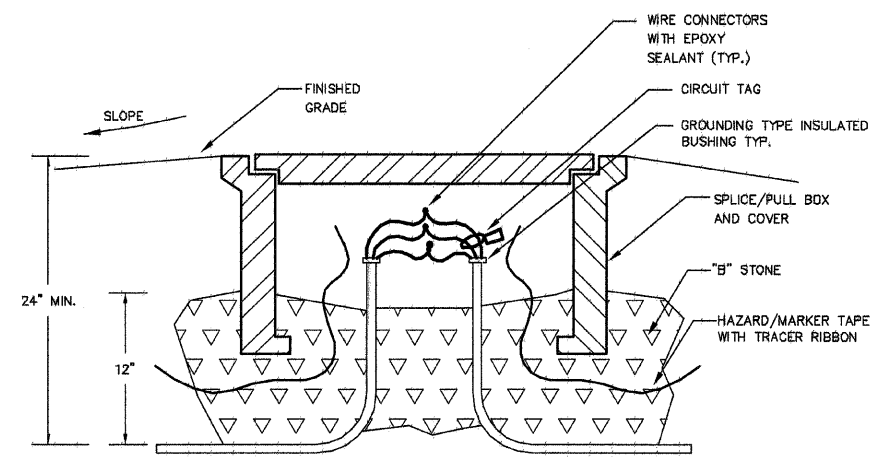
TYPICAL PULL BOX REQUIREMENTS
NO SCALE



2 TYPICAL POLE BASE
NO SCALE



4 BASE ELECTRICAL CONNECTION DETAIL
NO SCALE

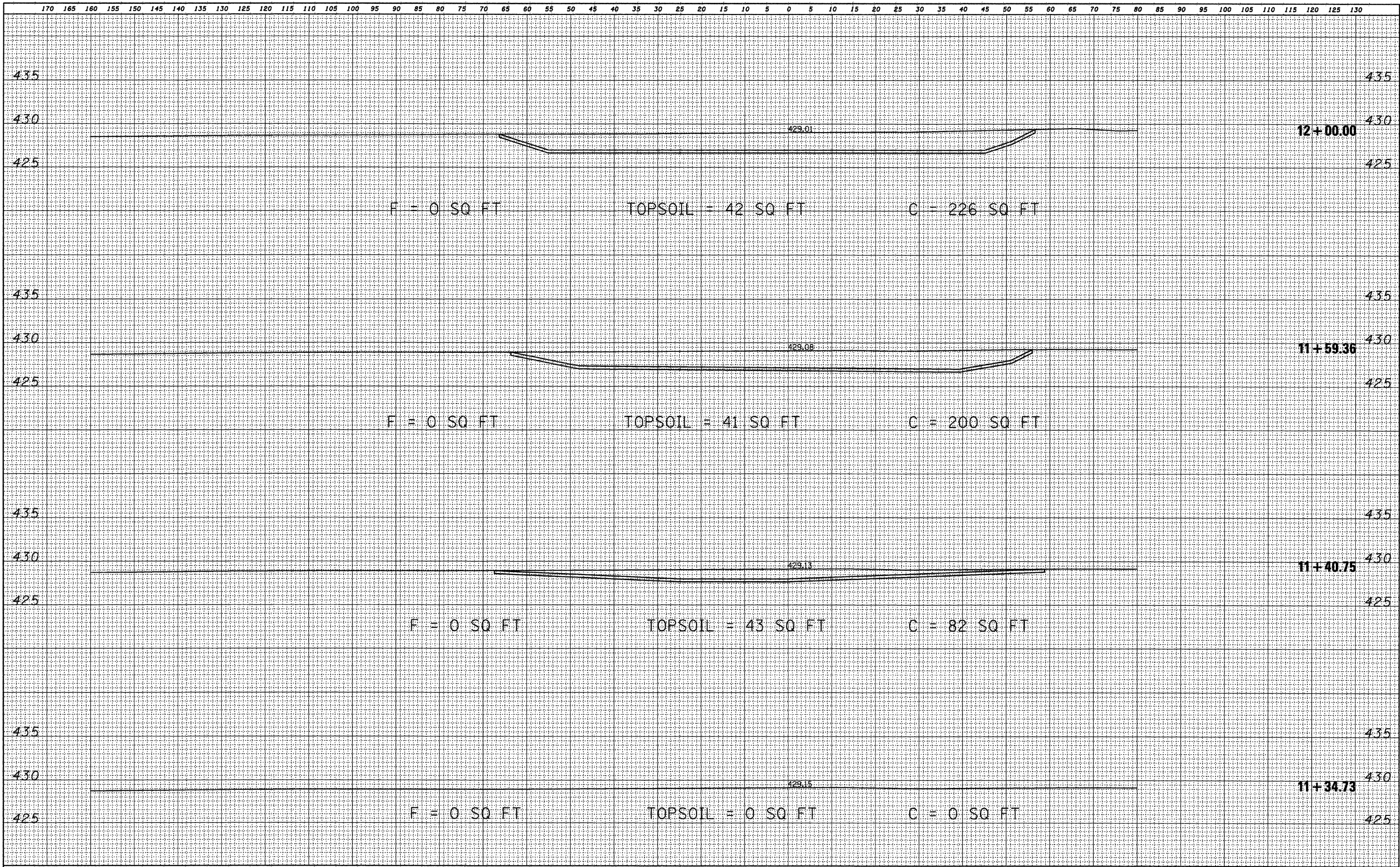


TYPICAL PULL BOX CONNECTION DETAIL
NO SCALE

FILE NAME -- \$FILEL\$	USER NAME --	DESIGNED --	REVISED --	STATE OF ILLINOIS DEPARTMENT OF TRANSPORTATION	SITE LIGHTING NOTES AND DETAILS LEWIS AND CLARK STATE HISTORIC SITE	F.A. R.T.E. --	SECTION	COUNTY	TOTAL SHEETS	SHEET NO.
	PLOT SCALE =	DRAWN -- D.M.U.	REVISED --					MADISON	13	B
	PLOT DATE =	CHECKED --	REVISED --			SCALE: NONE	SHEET NO. 8 OF 13 SHEETS	CONTRACT NO. 4606/		
		DATE -- 2/27/09	REVISED --					FED. ROAD DIST. NO. -- ILLINOIS FED. AID PROJECT		

DATE	
BY	
FINN	
SURVEY	
NOTE BOOK	
NO.	
ORIGINAL	
SURVEY	
NOTE BOOK	
NO.	
DESIGNED	
DRAWN	
CHECKED	
DATE	

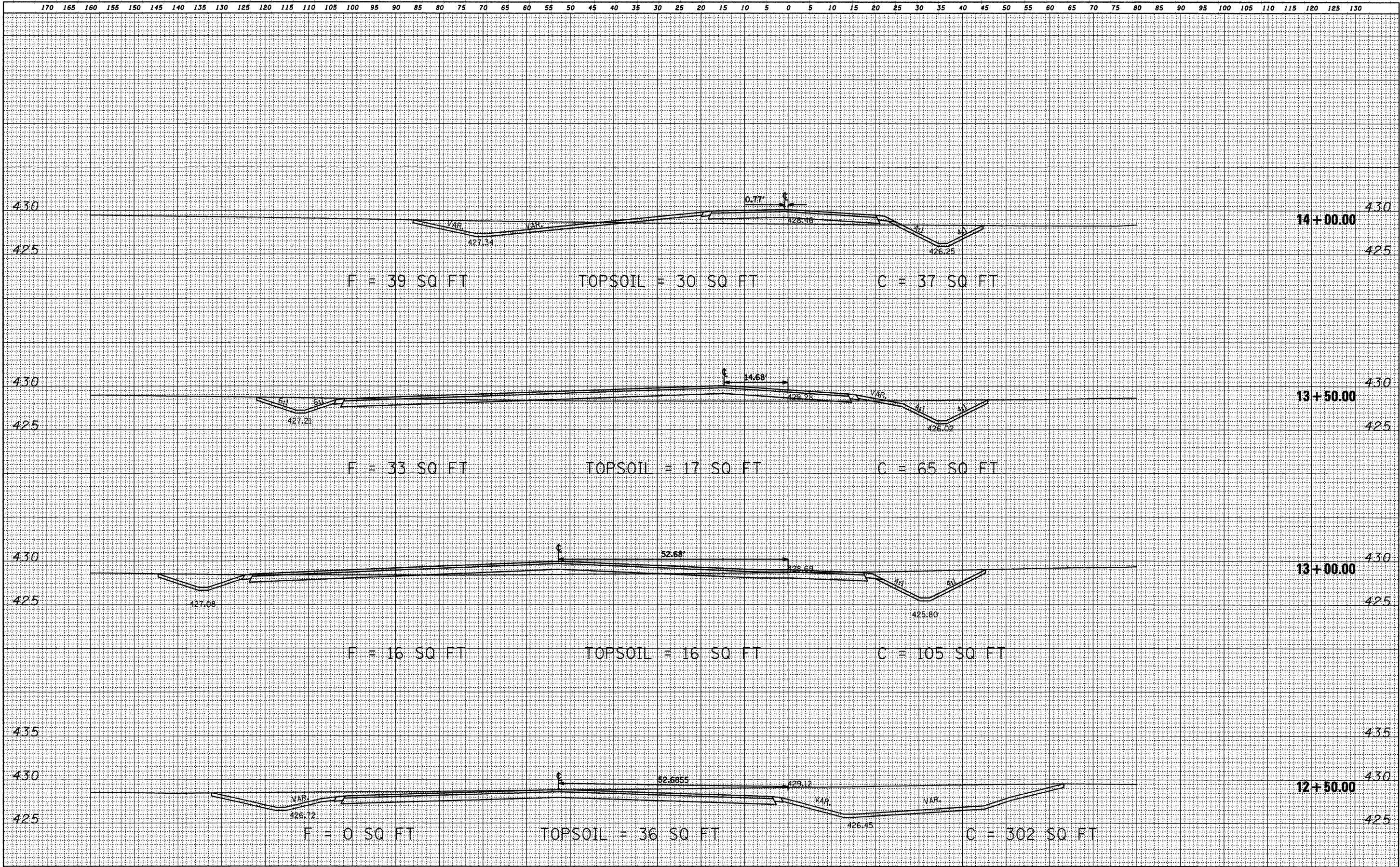
DATE	
BY	
FINN	
SURVEY	
NOTE BOOK	
NO.	
ORIGINAL	
SURVEY	
NOTE BOOK	
NO.	
DESIGNED	
DRAWN	
CHECKED	
DATE	



FILE NAME =	USER NAME = #USER#	DESIGNED - R.H.D.	REVISED -	STATE OF ILLINOIS DEPARTMENT OF TRANSPORTATION				PROPOSED CROSS SECTIONS LEWIS & CLARK STATE HISTORIC SITE				F.A. RTE.	SECTION	COUNTY	TOTAL SHEETS	SHEET NO.
#FILE#		DRAWN - S.D.K.	REVISED -					SCALE:	SHEET NO. 9 OF 13 SHEETS	STA. 11+34.73	TO STA. 12+00.00			MADISON	13	9
	PLOT SCALE = #SCALE#	CHECKED - R.H.D.	REVISED -					CONTRACT NO. 460 6/				FED. ROAD DIST. NO. [ILLINOIS] FED. AID PROJECT				
	PLOT DATE = #DATE#	DATE - 4/8/09	REVISED -													

DATE	
BY	
FINN	
SURVEY	
PLOTTED	
TEMPLATE	
AREAS	
CHECKED	
NO.	

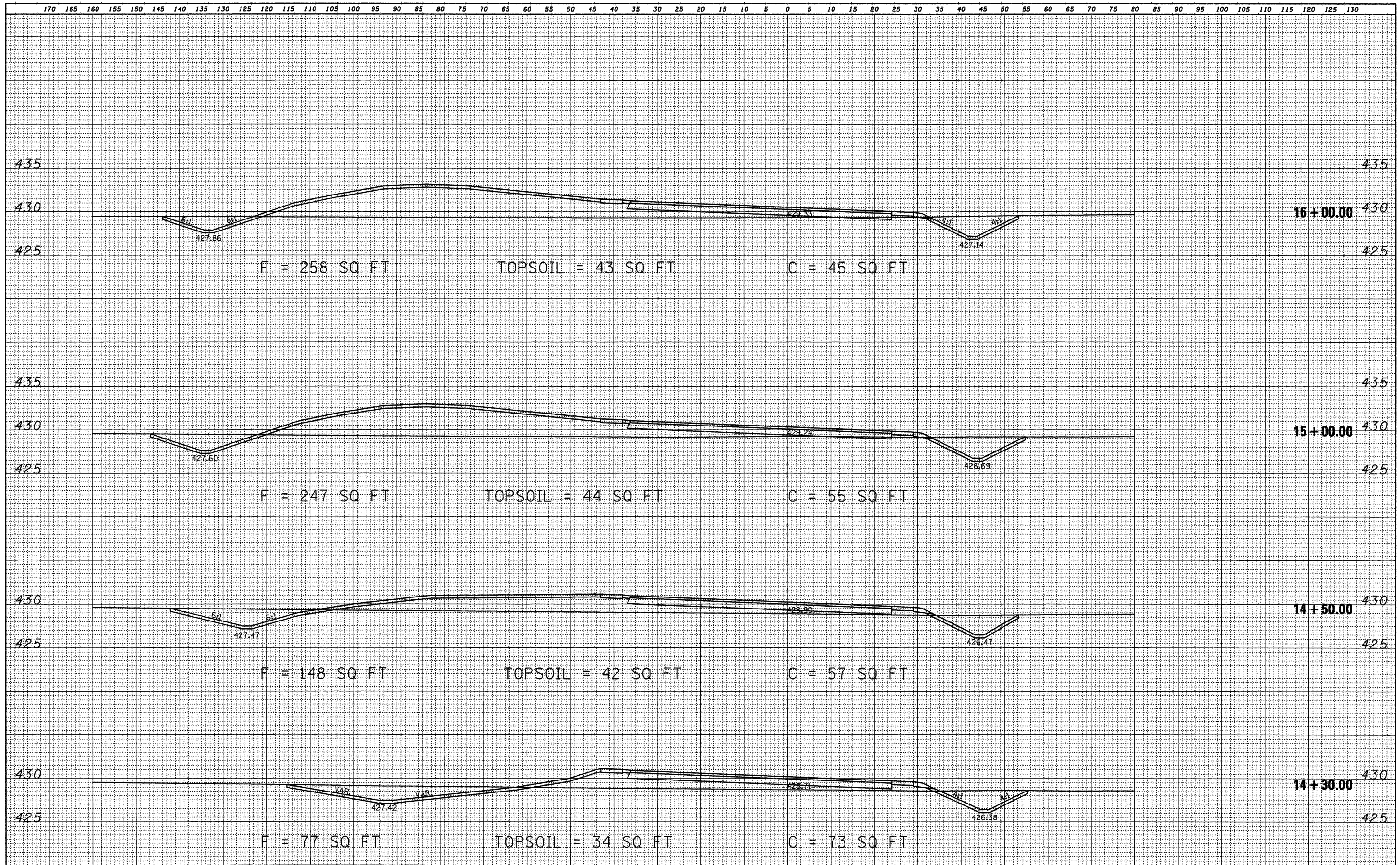
DATE	
BY	
ORIGINAL	
SURVEY	
PLOTTED	
TEMPLATE	
AREAS	
CHECKED	
NO.	



FILE NAME =	USER NAME = *USER*	DESIGNED - R.H.D.	REVISED -	STATE OF ILLINOIS DEPARTMENT OF TRANSPORTATION				PROPOSED CROSS SECTIONS LEWIS & CLARK STATE HISTORIC SITE				F.A. RTE.	SECTION	COUNTY	TOTAL SHEETS	SHEET NO.
#FILE#		DRAWN - S.D.K.	REVISED -					SCALE:	SHEET NO. 10 OF 13 SHEETS	STA. 12+50.00	TO STA. 14+00.00	FED. ROAD DIST. NO.	ILLINOIS	FED. AID PROJECT	MADISON	13
		CHECKED - R.H.D.	REVISED -									CONTRACT NO. 46067				
		DATE - 4/8/09	REVISED -													

DATE	
BY	
FINAL SURVEY	SURVEYED
NOTE BOOK	PLOTTED
NO.	AREAS CHECKED

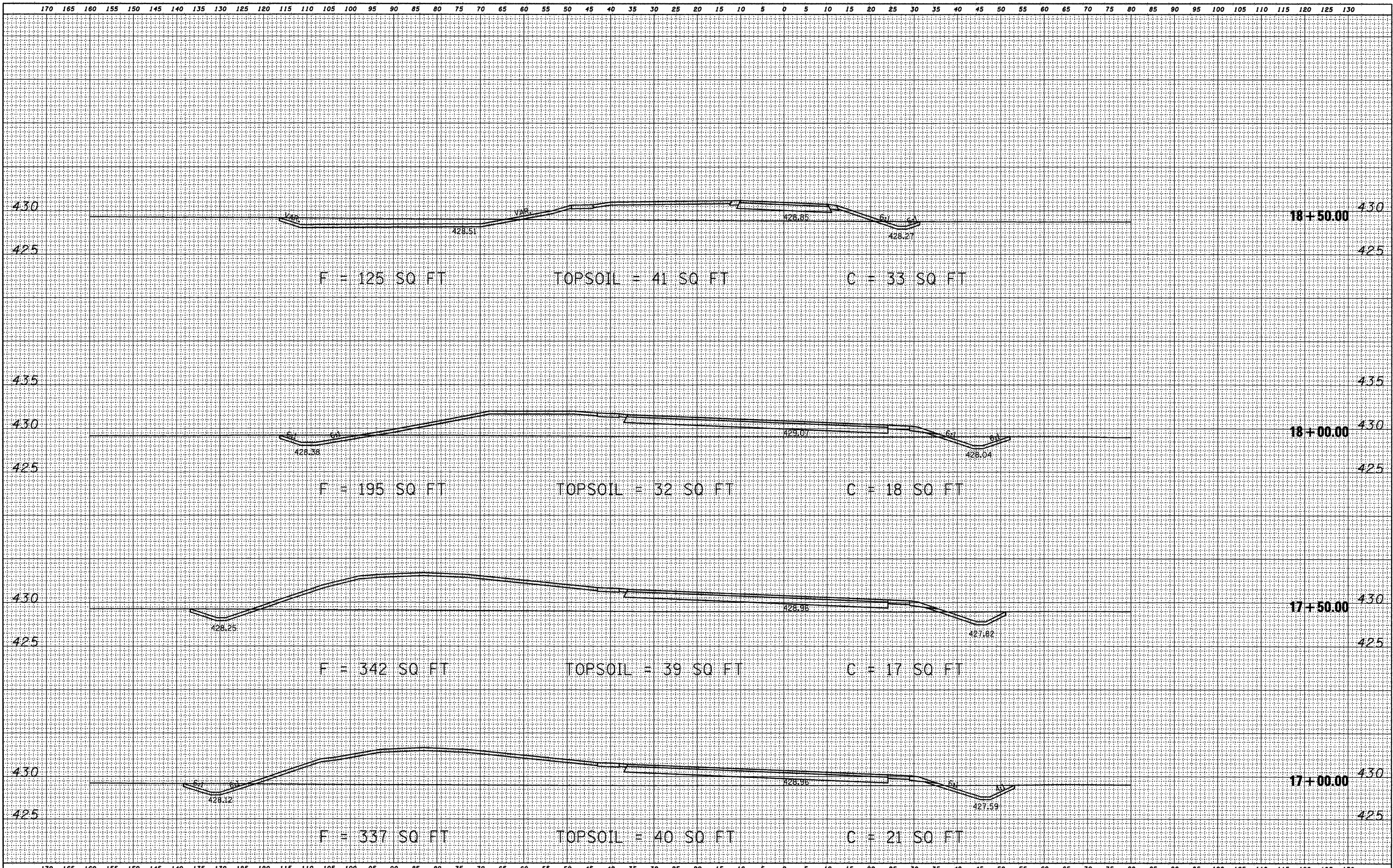
DATE	
BY	
ORIGINAL SURVEY	SURVEYED
NOTE BOOK	PLOTTED
NO.	AREAS CHECKED



FILE NAME =	USER NAME = *USER*	DESIGNED - R.H.D.	REVISED -	STATE OF ILLINOIS DEPARTMENT OF TRANSPORTATION	PROPOSED CROSS SECTIONS LEWIS & CLARK STATE HISTORIC SITE			F.A. RTE.	SECTION	COUNTY	TOTAL SHEETS	SHEET NO.
*FILE#		DRAWN - S.D.K.	REVISED -		SCALE:	SHEET NO. 11 OF 13 SHEETS	STA. 14+30.00	TO STA. 16+00.00	MADISON	13	11	
PLOT SCALE = *SCALE*		CHECKED - R.H.D.	REVISED -		CONTRACT NO. 46067			FED. ROAD DIST. NO.		ILLINOIS FED. AID PROJECT		
PLOT DATE = *DATE*		DATE - 4/8/09	REVISED -									

FINAL SURVEY	CHECKED	DATE
SURVEY	PLOTTED	
NOTE BOOK	TEMPLATE	
	AREAS	
	CHECKED	

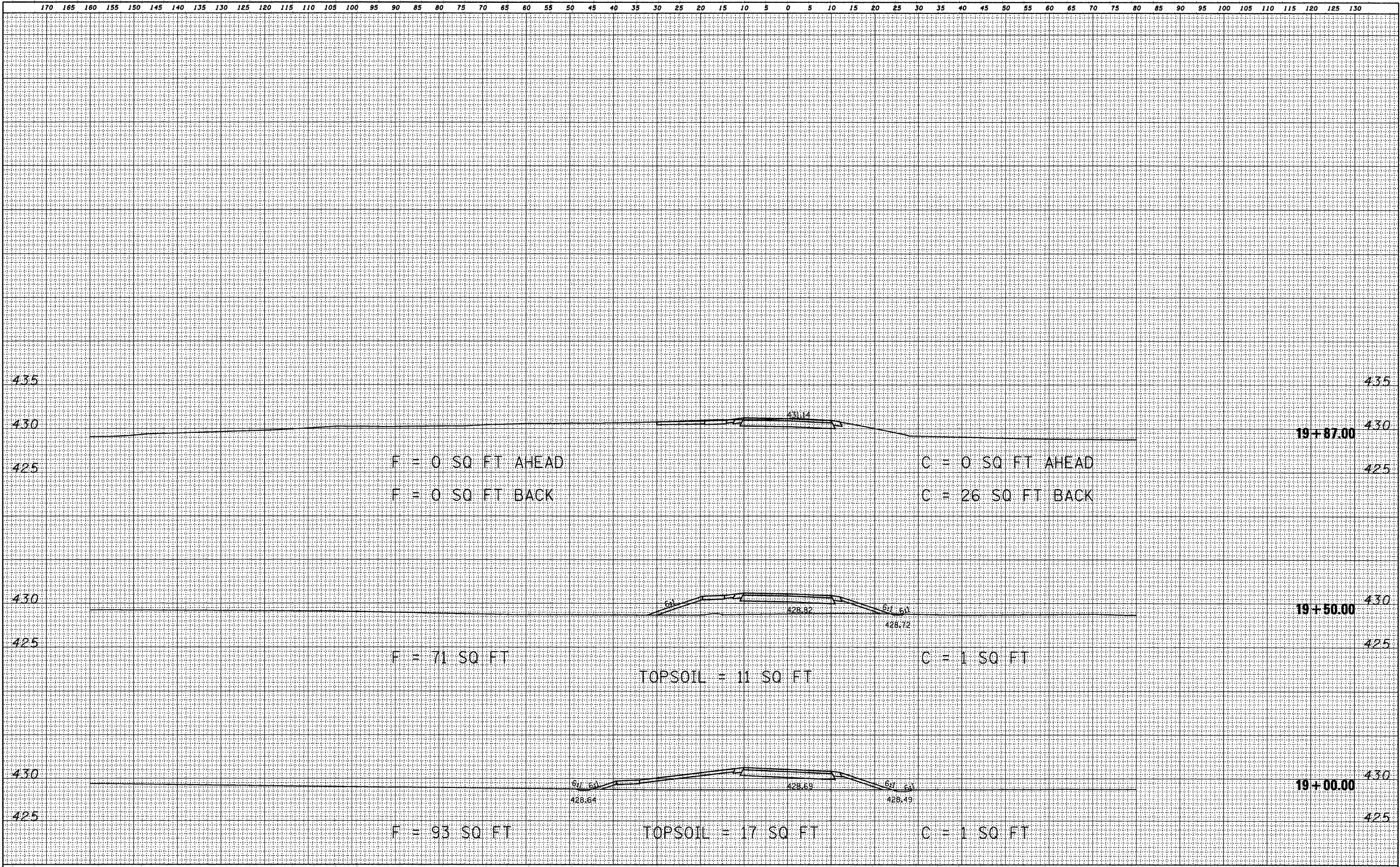
ORIGINAL SURVEY	CHECKED	DATE
SURVEY	PLOTTED	
NOTE BOOK	TEMPLATE	
	AREAS	
	CHECKED	



FILE NAME =	USER NAME = *USER*	DESIGNED - R.H.D.	REVISED -	STATE OF ILLINOIS DEPARTMENT OF TRANSPORTATION	PROPOSED CROSS SECTIONS LEWIS & CLARK STATE HISTORIC SITE			F.A. RTE.	SECTION	COUNTY	TOTAL SHEETS	SHEET NO.
#FILE#		DRAWN - S.D.K.	REVISED -		SCALE:	SHEET NO. 12 OF 13 SHEETS	STA. 17+00.00 TO STA. 18+50.00			MADISON	13	12
PLOT SCALE = *SCALE*		CHECKED - R.H.D.	REVISED -								CONTRACT NO. 4606/	
PLOT DATE = *DATE*		DATE - 4/8/09	REVISED -								ILLINOIS FED. AID PROJECT	

FINAL SURVEY NOTE BOOK NO.	REVISIONS	DATE
	PLOTTED	
	TEMPLATE	
	AREAS	
	CHECKED	

ORIGINAL SURVEY NOTE BOOK NO.	REVISIONS	DATE
	PLOTTED	
	TEMPLATE	
	AREAS	
	CHECKED	



FILE NAME = #FILE#	USER NAME = #USER#	DESIGNED - R.H.D.	REVISED -	STATE OF ILLINOIS DEPARTMENT OF TRANSPORTATION	PROPOSED CROSS SECTIONS LEWIS & CLARK STATE HISTORIC SITE			F.A. RTE.	SECTION	COUNTY	TOTAL SHEETS	SHEET NO.
	PLOT SCALE = #SCALE#	DRAWN - S.D.K.	REVISED -		SCALE:	SHEET NO. 13 OF 13 SHEETS	STA. 19+00.00	TO STA. 19+87.00	MADISON	13	13	
	PLOT DATE = #DATE#	CHECKED - R.H.D.	REVISED -					CONTRACT NO. 46067				
		DATE - 4/8/09	REVISED -					FED. ROAD DIST. NO. [ILLINOIS] FED. AID PROJECT				