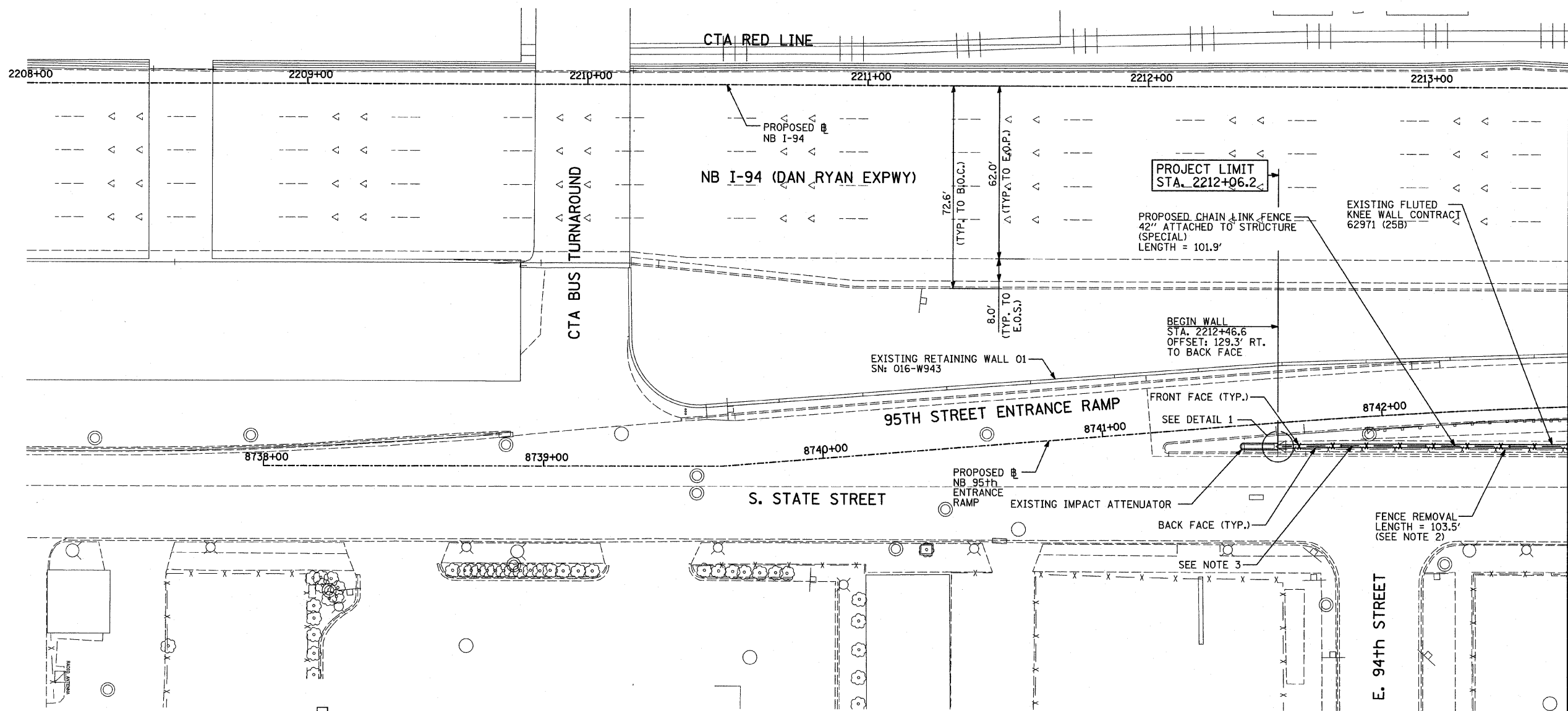
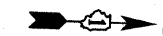
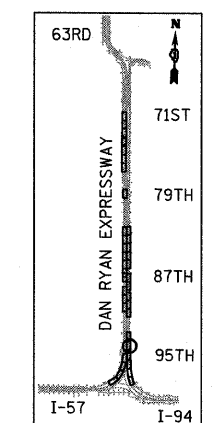


F.A.I. RTE.	SECTION	COUNTY	TOTAL SHEETS	SHEET NO.
94	2005-030 I	COOK	29	4
STA. 2212+06.2		TO STA. 2338+58.7		
FED. ROAD DIST. NO.		ILLINOIS FED. AID PROJECT		

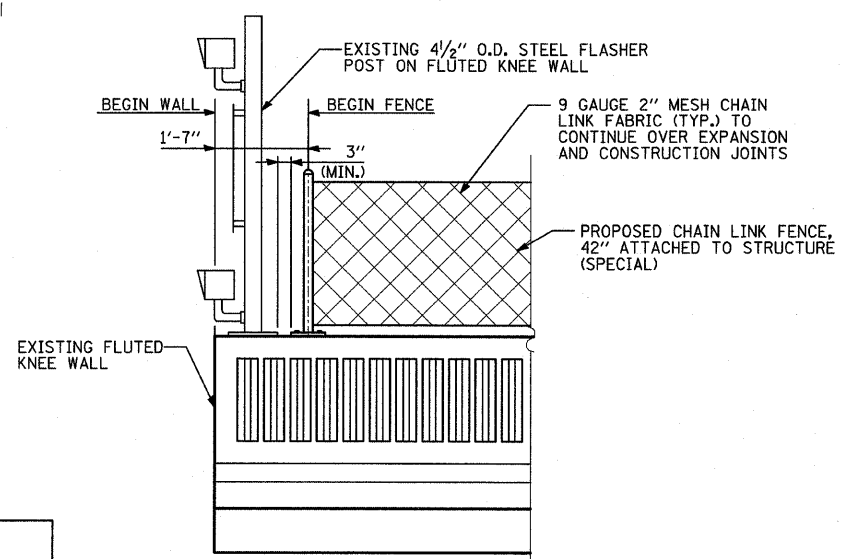
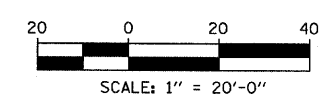
60A01



MATCHLINE NB STA. 2208+00 TO STA. 2213+50



LOCATION MAP



DETAIL 1
(LOOKING WEST)

LEGEND:
 FENCE REMOVAL

- NOTES:**
1. FOR CHAIN LINK FENCE, 42" ATTACHED TO STRUCTURE (SPECIAL), SEE SHEET 19 OF 29.
 2. REMOVAL PATTERN FOR EXISTING FENCE NOT SHOWN FOR CLARITY.
 3. COORDINATE WITH CONTRACT 62971 (25B) TO AVOID CONFLICT WITH 2" ELECTRICAL CONDUIT EMBEDDED IN STRUCTURE BETWEEN STA. 2212+49 TO STA. 2212+90.

REVISIONS	
NAME	DATE

ILLINOIS DEPARTMENT OF TRANSPORTATION
 F.A.I. 94 (DAN RYAN EXPRESSWAY)
 PROPOSED PLAN
 NB I-94 (DAN RYAN EXPRESSWAY)
 STA. 2208+00.00 TO STA. 2213+50.00
 CONTRACT 25B LOCATION

SCALE: 1"=20'
 DATE: FEBRUARY 13, 2009
 DRAWN BY: MAF
 CHECKED BY: TGB, MI

TYLIN INTERNATIONAL

3/19/2009 10:53:09 AM