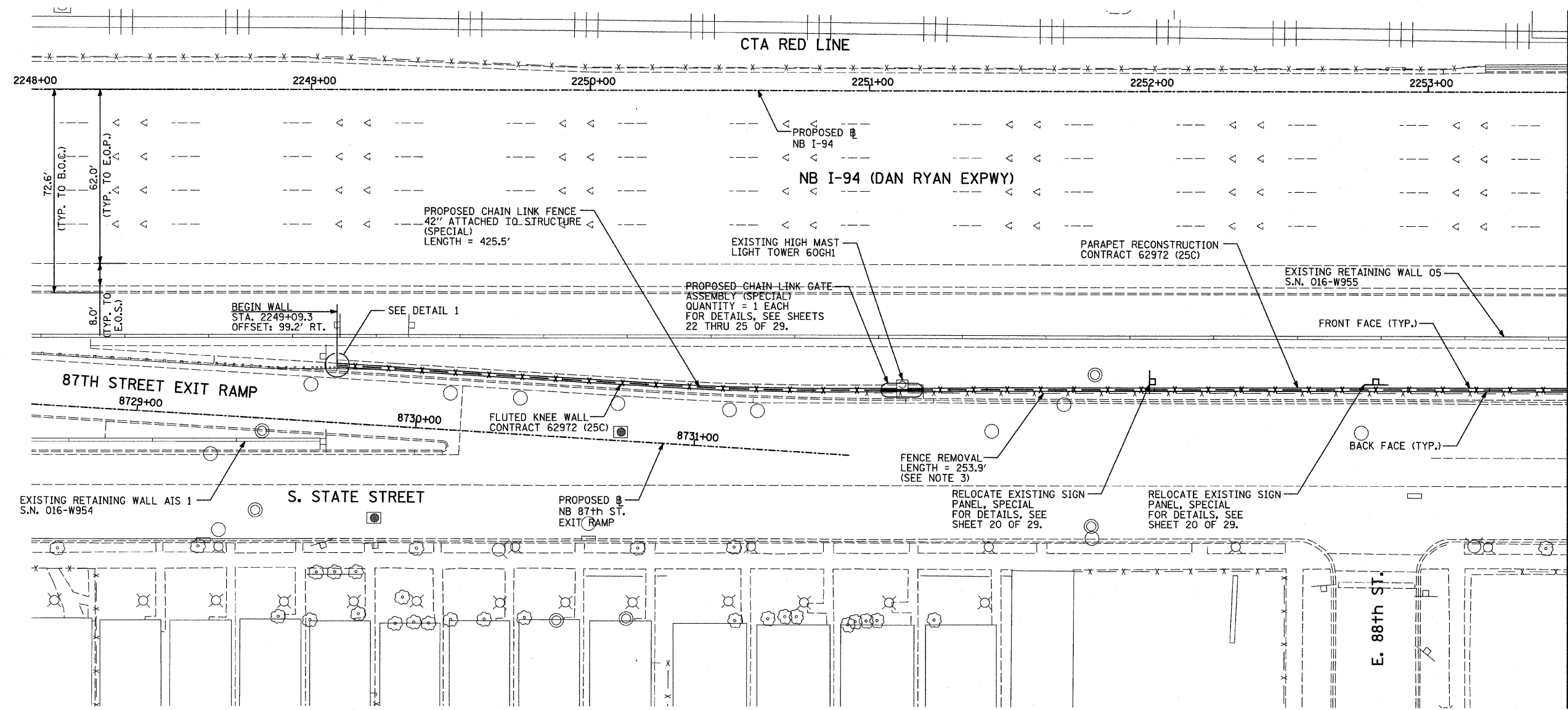
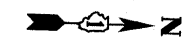
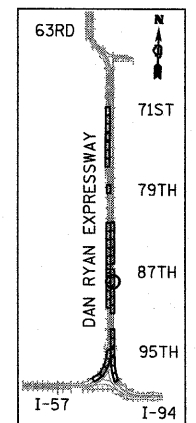


F.A.I. RTE.	SECTION	COUNTY	TOTAL SHEETS	SHEET NO.
94	2005-030 I	COOK	29	9
STA. 2212+06.2		TO STA. 2338+58.7		
FED. ROAD DIST. NO.		ILLINOIS FED. AID PROJECT		

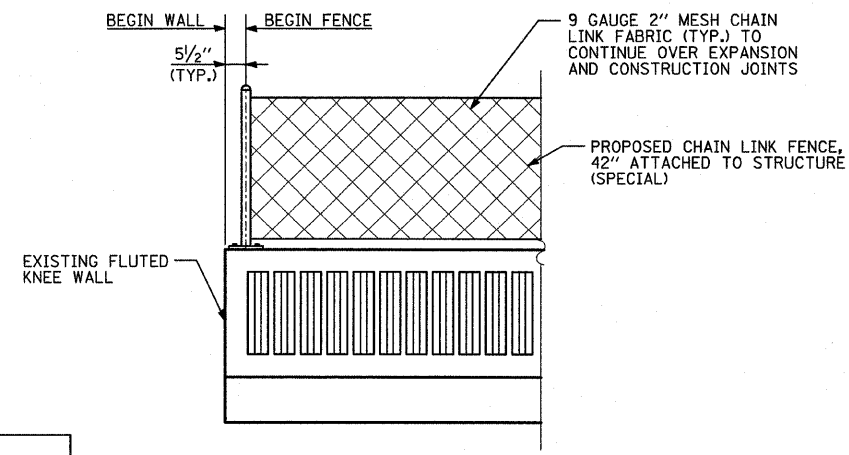
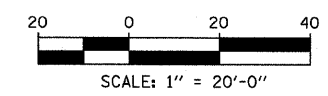
60A01



MATCHLINE NB STA. 2253+50.00

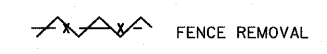


LOCATION MAP



**DETAIL 1**  
(LOOKING WEST)

**LEGEND:**



**NOTES:**

1. FOR CHAIN LINK FENCE, 42" ATTACHED TO STRUCTURE (SPECIAL), SEE SHEET 19 OF 29.
2. FOR CHAIN LINK GATE ASSEMBLY (SPECIAL), SEE SHEETS 22 THRU 25 OF 29.
3. REMOVAL PATTERN FOR EXISTING FENCE NOT SHOWN FOR CLARITY.

REVISIONS	
NAME	DATE

ILLINOIS DEPARTMENT OF TRANSPORTATION  
**F.A.I. 94 (DAN RYAN EXPRESSWAY)**  
**PROPOSED PLAN**  
**NB I-94 (DAN RYAN EXPRESSWAY)**  
**STA. 2248+00.00 TO STA. 2253+50.00**  
**CONTRACT 25C LOCATION**

SCALE: 1"=20'  
DATE: FEBRUARY 13, 2009

DRAWN BY: MAF  
CHECKED BY: TGB, MI

**TYLIN** INTERNATIONAL

3/19/2009 10:37 AM