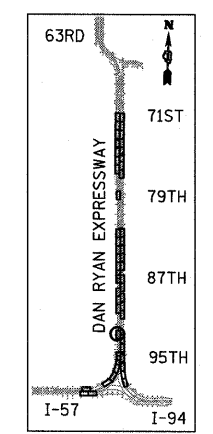
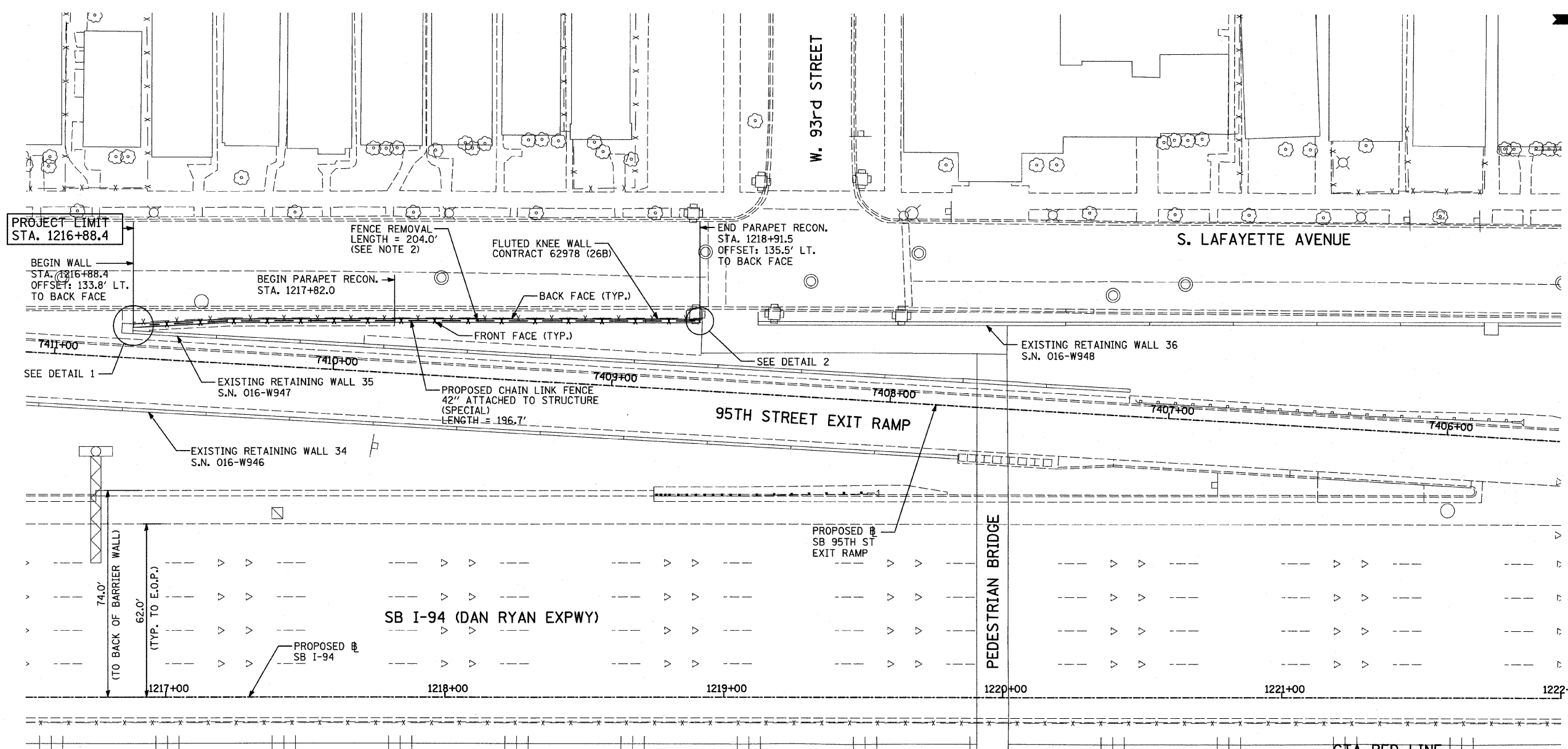
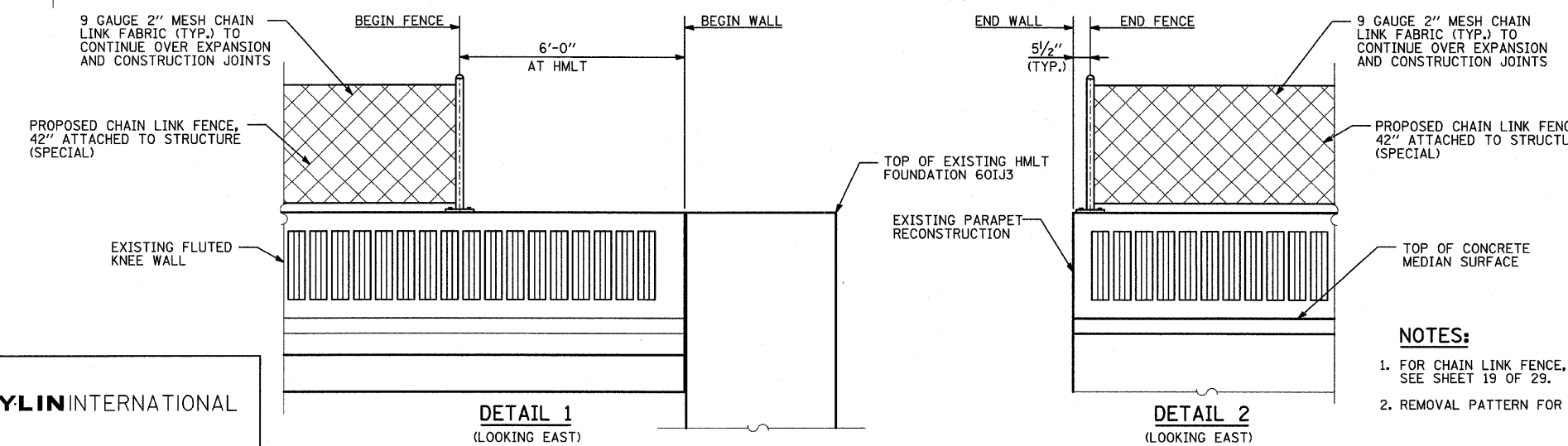


F.A.I. RTE.	SECTION	COUNTY	TOTAL SHEETS	SHEET NO.
94	2005-031 I	COOK	29	4
STA. 1216+88.4		TO STA. 1347+14.0		
FED. ROAD DIST. NO.		ILLINOIS FED. AID PROJECT		

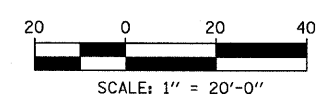
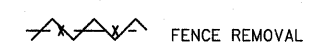
60A02



LOCATION MAP



**LEGEND:**



**NOTES:**

1. FOR CHAIN LINK FENCE, 42" ATTACHED TO STRUCTURE (SPECIAL), SEE SHEET 19 OF 29.
2. REMOVAL PATTERN FOR EXISTING FENCE NOT SHOWN FOR CLARITY.

REVISIONS	
NAME	DATE

ILLINOIS DEPARTMENT OF TRANSPORTATION  
**F.A.I. 94 (DAN RYAN EXPRESSWAY)  
 PROPOSED PLAN  
 SB I-94 (DAN RYAN EXPRESSWAY)  
 STA. 1216+50.00 TO STA. 1220+00.00  
 CONTRACT 26B LOCATION**

SCALE: 1"=20'  
 DATE: FEBRUARY 13, 2009

DRAWN BY: MAF  
 CHECKED BY: TGB, MI

**TYLIN INTERNATIONAL**

**DETAIL 1**  
(LOOKING EAST)

**DETAIL 2**  
(LOOKING EAST)

P:\0237\_3\road\334\p26\60a02.dwg 3/19/2009 10:35:30 AM