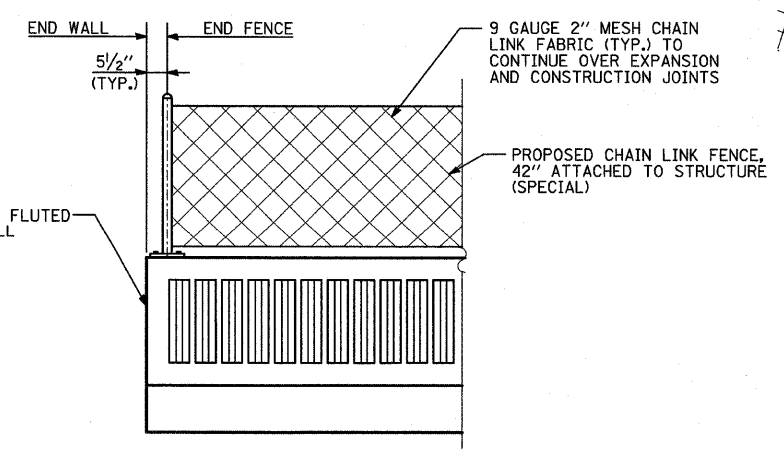
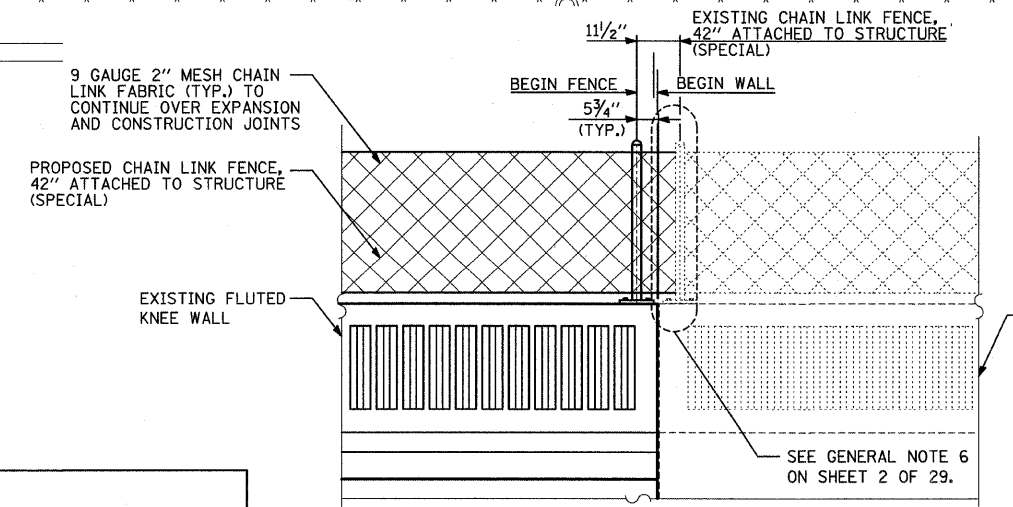
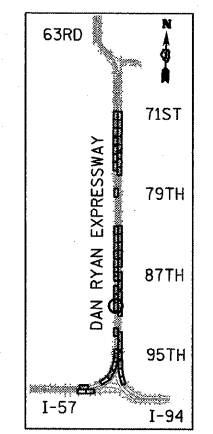
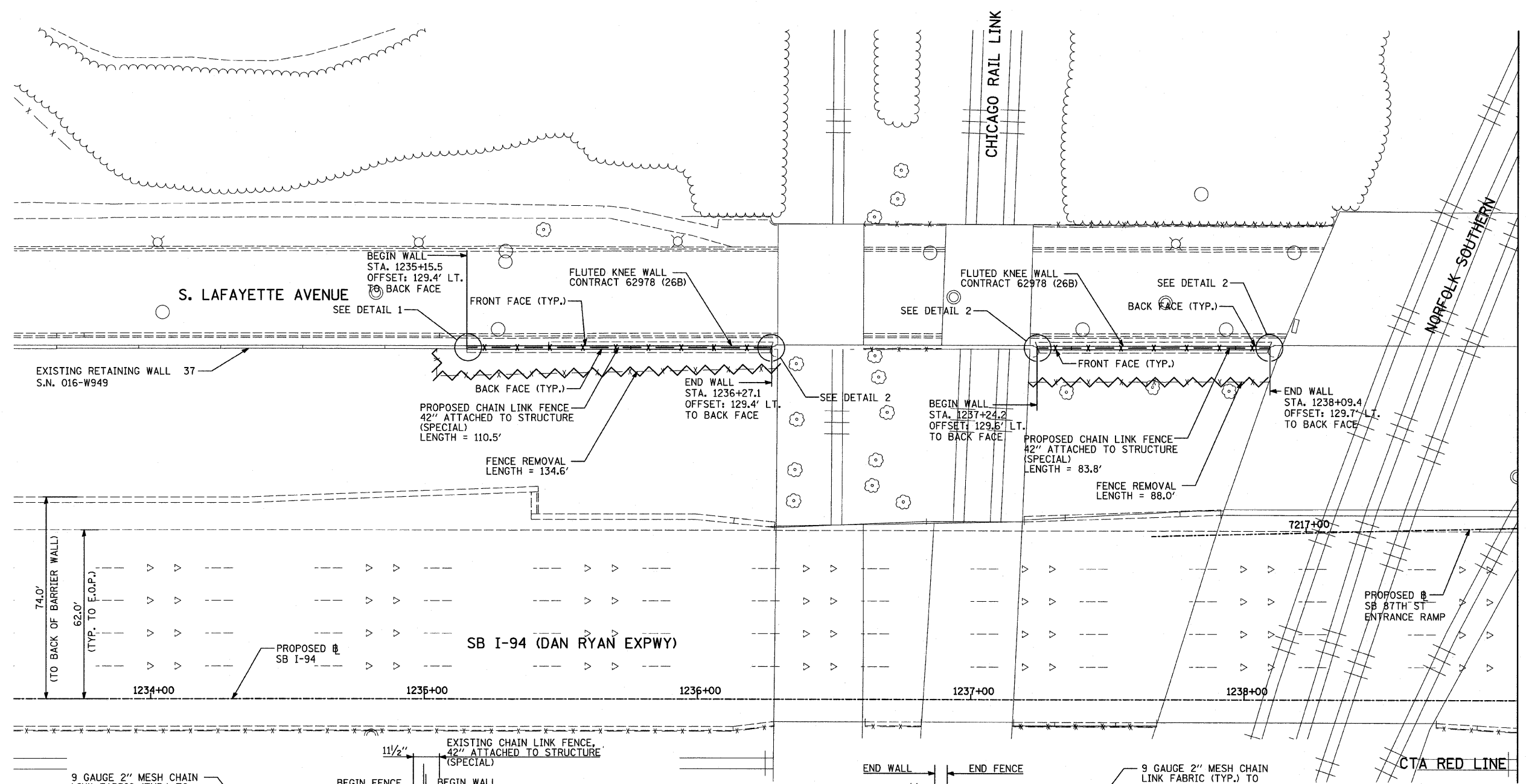
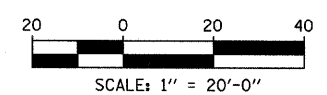
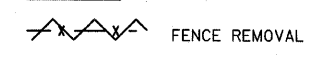


F.A.I. RTE.	SECTION	COUNTY	TOTAL SHEETS	SHEET NO.
94	2005-031 I	COOK	29	5
STA. 1216+88.4		TO STA. 1347+14.0		
FED. ROAD DIST. NO.	ILLINOIS	FED. AID PROJECT		

60A02



LEGEND:



NOTES:

- FOR CHAIN LINK FENCE, 42" ATTACHED TO STRUCTURE (SPECIAL), SEE SHEET 19 OF 29.

REVISIONS	
NAME	DATE

ILLINOIS DEPARTMENT OF TRANSPORTATION
F.A.I. 94 (DAN RYAN EXPRESSWAY)
PROPOSED PLAN
SB I-94 (DAN RYAN EXPRESSWAY)
STA. 1233+50.00 TO STA. 1239+00.00
CONTRACT 26B LOCATION

SCALE: 1"=20'
DATE: FEBRUARY 13, 2009

DRAWN BY: MAF
CHECKED BY: TGB, MI

TYLIN INTERNATIONAL

P:\02\3\Road\63\4\p26b\60A02.dwg 3/19/2009 10:35:32 AM