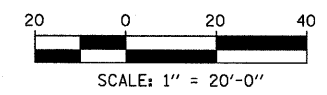
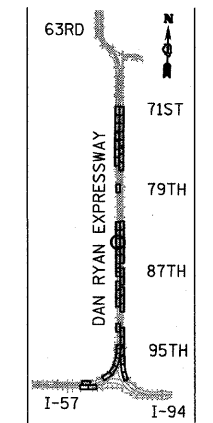
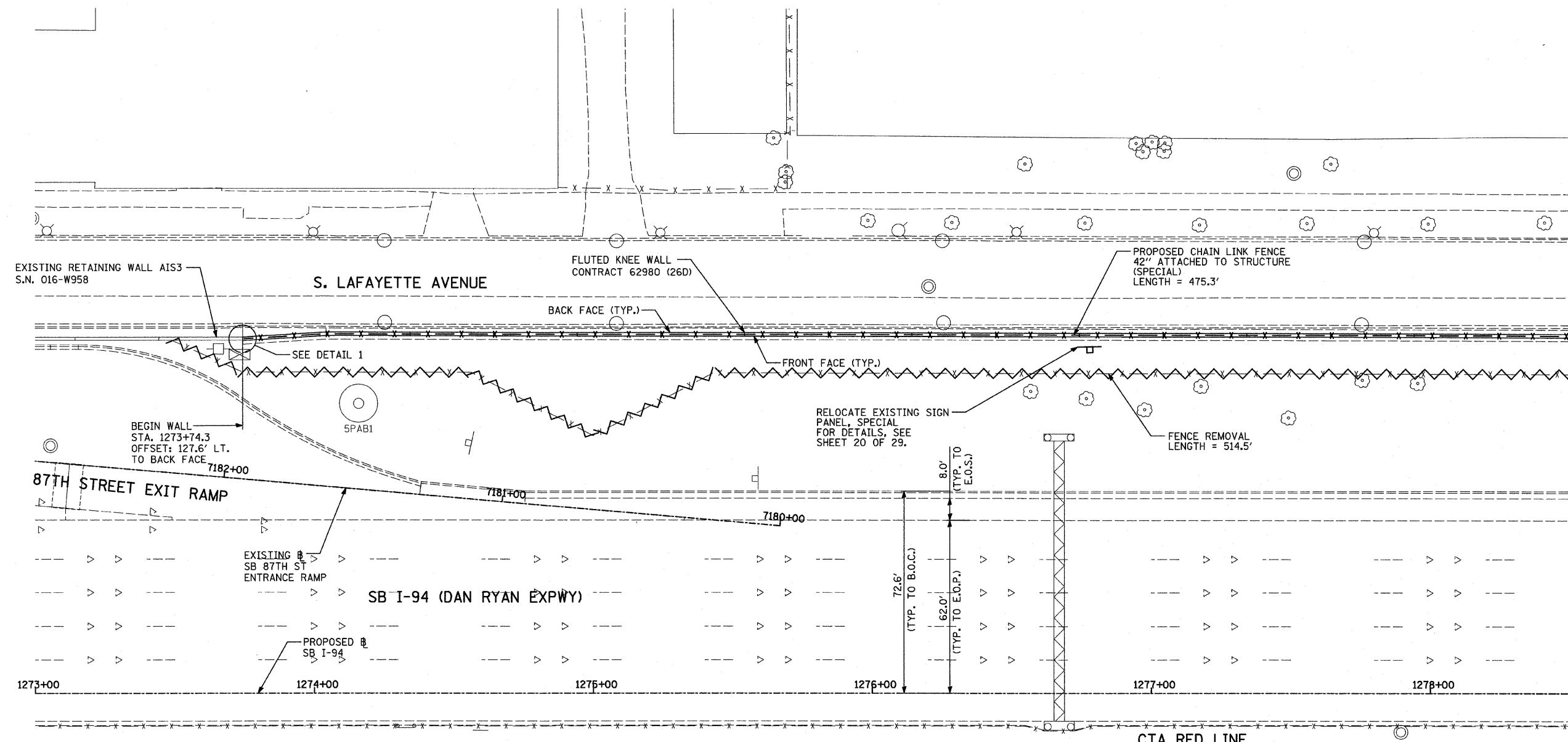
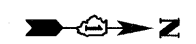


F.A.I. RTE.	SECTION	COUNTY	TOTAL SHEETS	SHEET NO.
94	2005-031 I	COOK	29	11
STA. 1216+88.4		TO STA. 1347+14.0		
FED. ROAD DIST. NO.		ILLINOIS FED. AID PROJECT		

60A02



**LEGEND:**

FENCE REMOVAL

**NOTES:**

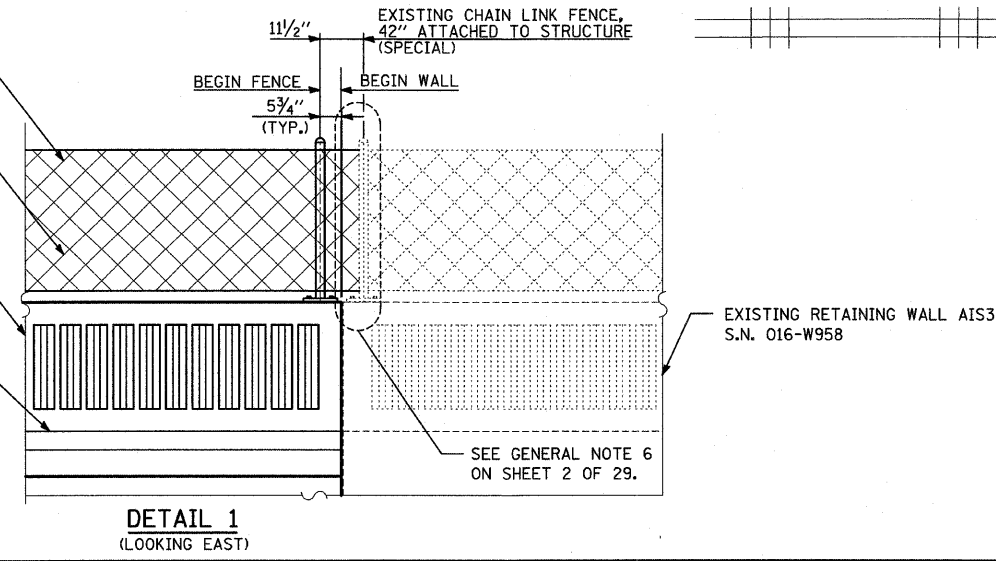
1. FOR CHAIN LINK FENCE, 42" ATTACHED TO STRUCTURE (SPECIAL), SEE SHEET 19 OF 29.

REVISIONS	
NAME	DATE

ILLINOIS DEPARTMENT OF TRANSPORTATION  
F.A.I. 94 (DAN RYAN EXPRESSWAY)  
PROPOSED PLAN  
SB I-94 (DAN RYAN EXPRESSWAY)  
STA. 1273+00.00 TO STA. 1278+50.00  
CONTRACT 26D LOCATION

SCALE: 1"=20'  
DATE: FEBRUARY 13, 2009

DRAWN BY: MAF  
CHECKED BY: TGB, MI



**TYLIN** INTERNATIONAL