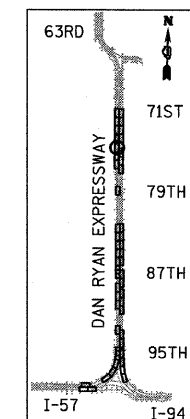
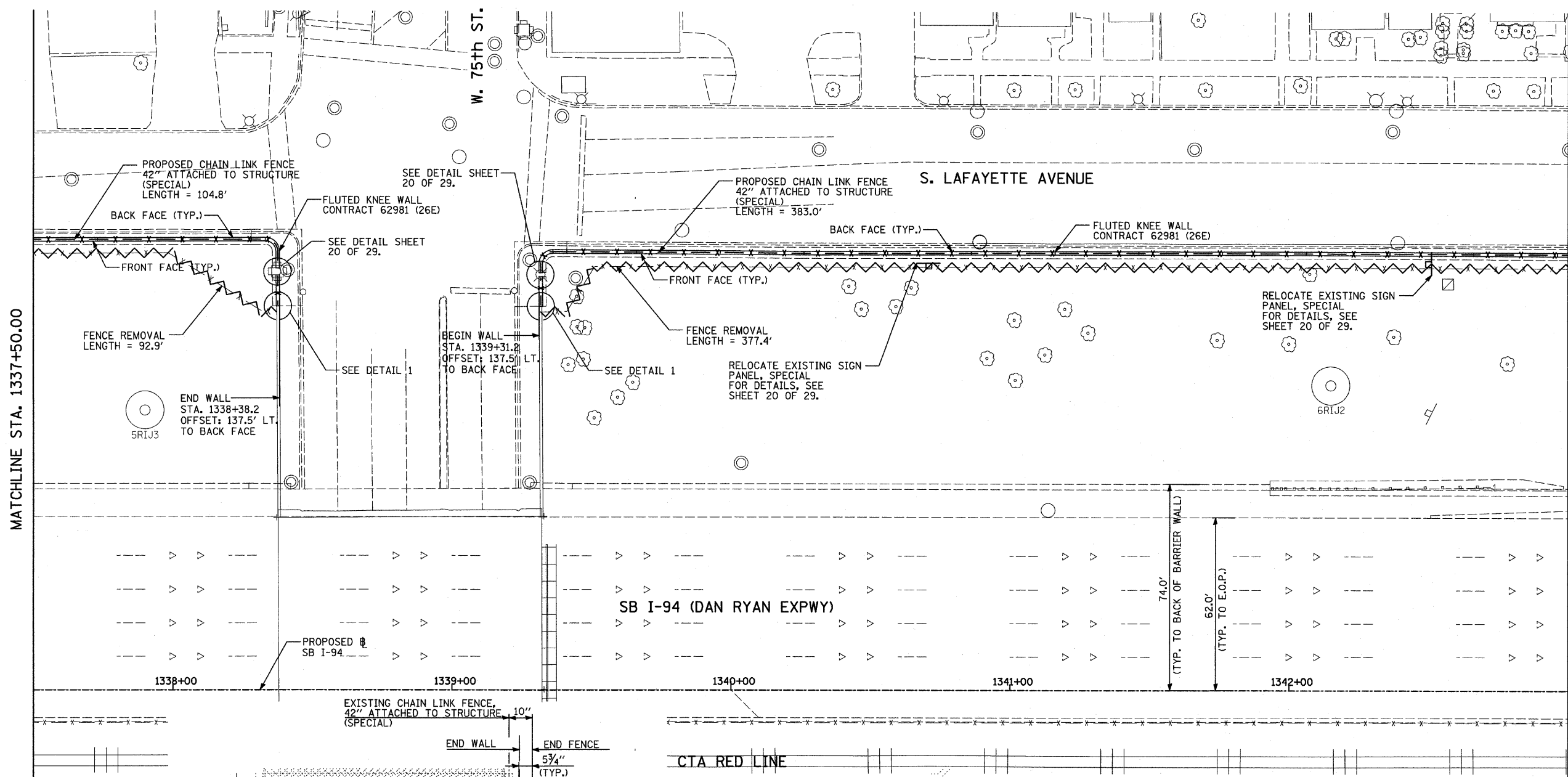
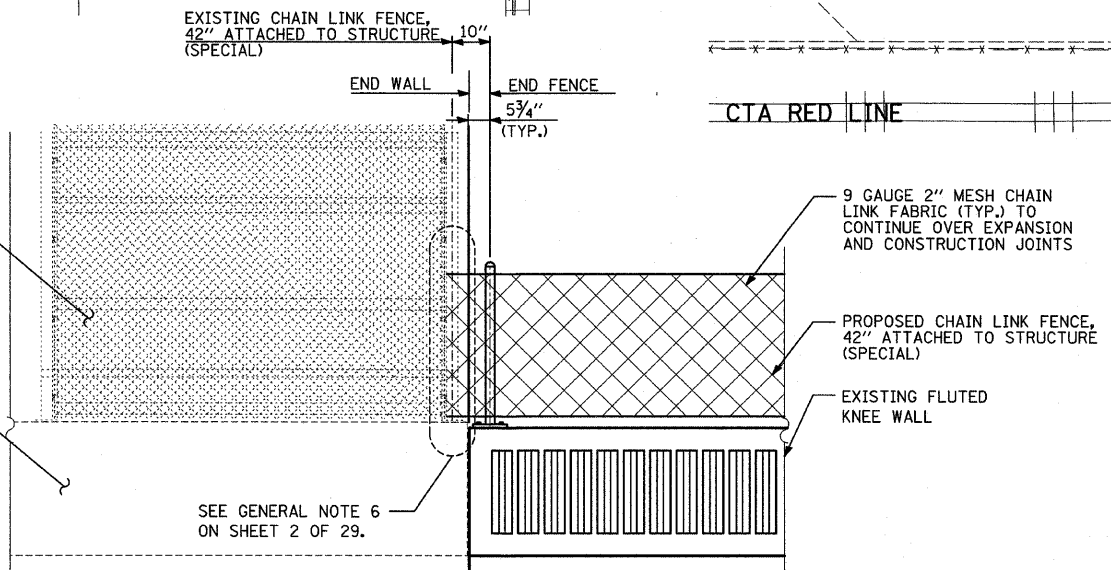
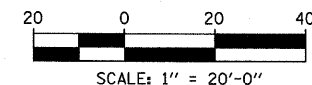


F.A.I. RTE.	SECTION	COUNTY	TOTAL SHEETS	SHEET NO.
94	2005-031 I	COOK	29	17
STA. 1216+88.4		TO STA. 1347+14.0		
FED. ROAD DIST. NO.	ILLINOIS	FED. AID PROJECT		

60A02



LOCATION MAP



DETAIL 1
(LOOKING SOUTH)

LEGEND:

FENCE REMOVAL

NOTES:

1. FOR CHAIN LINK FENCE, 42" ATTACHED TO STRUCTURE (SPECIAL), SEE SHEET 19 OF 29.

REVISIONS	
NAME	DATE

ILLINOIS DEPARTMENT OF TRANSPORTATION
**F.A.I. 94 (DAN RYAN EXPRESSWAY)
 PROPOSED PLAN**
SB I-94 (DAN RYAN EXPRESSWAY)
STA. 1337+50.00 TO STA. 1343+00.00
CONTRACT 26E LOCATION

SCALE: 1"=20'
 DATE: FEBRUARY 13, 2009

DRAWN BY: MAF
 CHECKED BY: TGB, MI

TYLIN INTERNATIONAL

P:\0227\2_V\road\c34\pp26es10_33a.dwg
 3/19/2009 10:36:03 AM