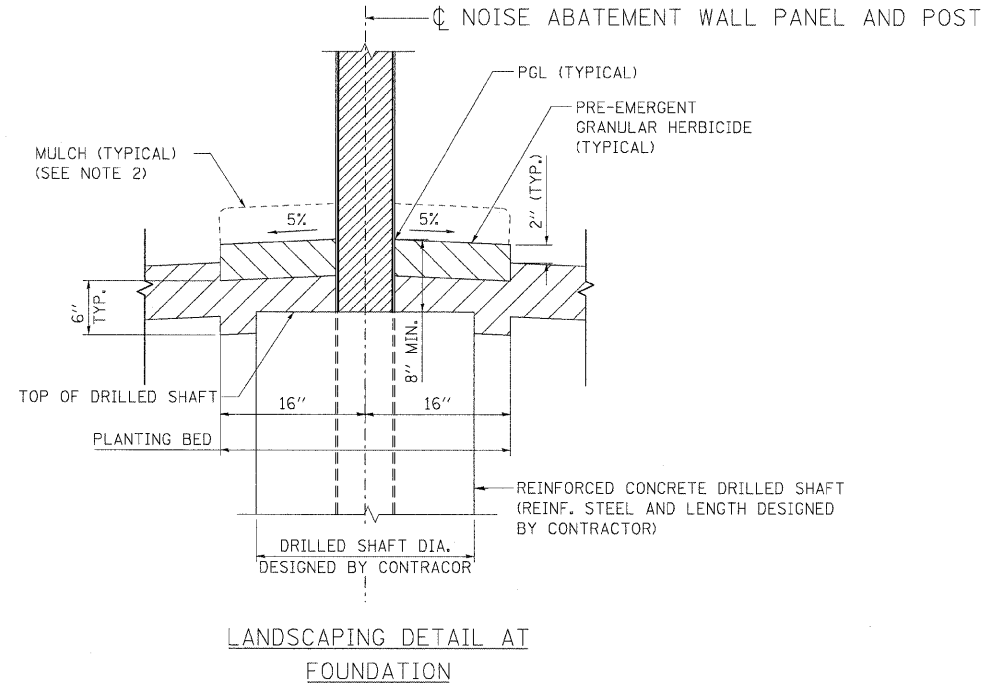
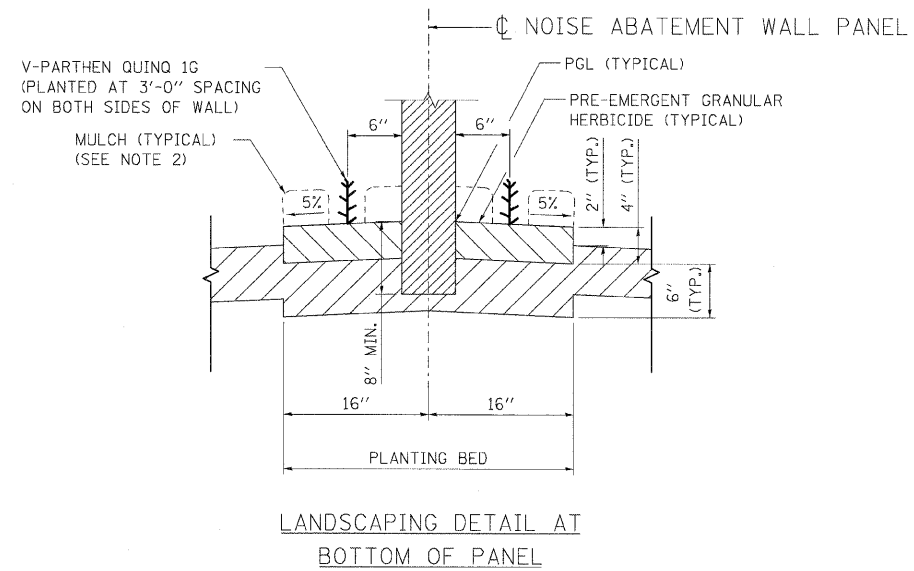


F.A.I. RTE.	SECTION	COUNTY	TOTAL SHEETS	SHEET NO.
55	99 (1&2) I-11	WILL	176	10
STA.		TO STA.		
FED. ROAD DIST. NO.		ILLINOIS FED. AID PROJECT		



NOTES

1. COMPOST SHOWN PRIOR TO INCORPORATION INTO TOPSOIL BY TILLING.
2. MULCH SHALL BE PLACED TO COVER THE ENTIRE PLANTING BED EXCEPT AT VINE LOCATIONS.

LEGEND

- TOPSOIL FURNISH AND PLACE, 6"
- COMPOST FURNISH AND PLACE, 4" (SEE NOTE 1)

PLOT DATE = #DATE#
 FILE NAME = #FILE#
 USER NAME = #USER#
 \\P0314011.DCN \VMP2\ASO.DCN \MID\1080.DCN \VDP\1080.DCN \TSC\1080.DCN \DD\1080.DCN
 2-03-2009 17:27:54

REVISIONS	
NAME	DATE

ILLINOIS DEPARTMENT OF TRANSPORTATION
 FAI ROUTE 55 (BLACK ROAD TO U.S. ROUTE 30)
 NOISE ABATEMENT WALLS

**TYPICAL SECTIONS
 LANDSCAPING DETAILS**

SCALE: N.T.S. DRAWN BY AG
 DATE 02/06/09 CHECKED BY DDH

TENG
 TENG & ASSOCIATES, INC.
 ENGINEERS/ARCHITECTS/PLANNERS
 CHICAGO, ILLINOIS