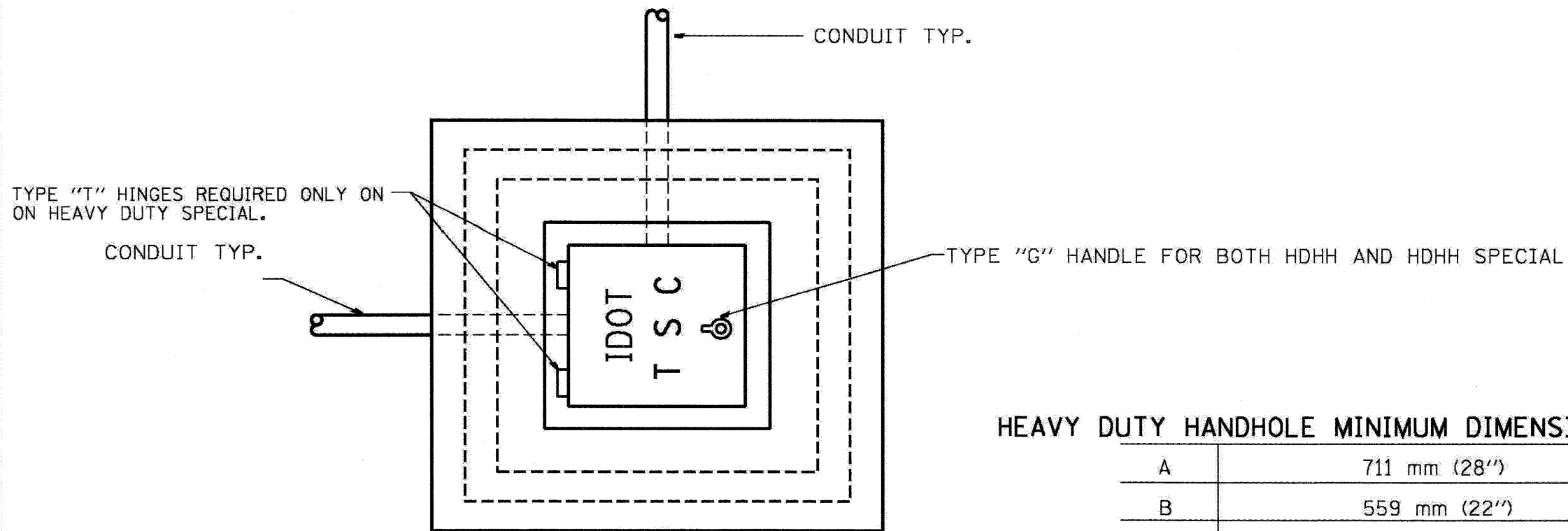


F.A.I. RTE.	SECTION	COUNTY	TOTAL SHEETS	SHEET NO.
55	99 (I&2) I-11	WILL	176	91
STA.		TO STA.		
FED. ROAD DIST. NO.		ILLINOIS FED. AID PROJECT		



PLAN

HEAVY DUTY HANDHOLE MINIMUM DIMENSIONS (UNHINGED)

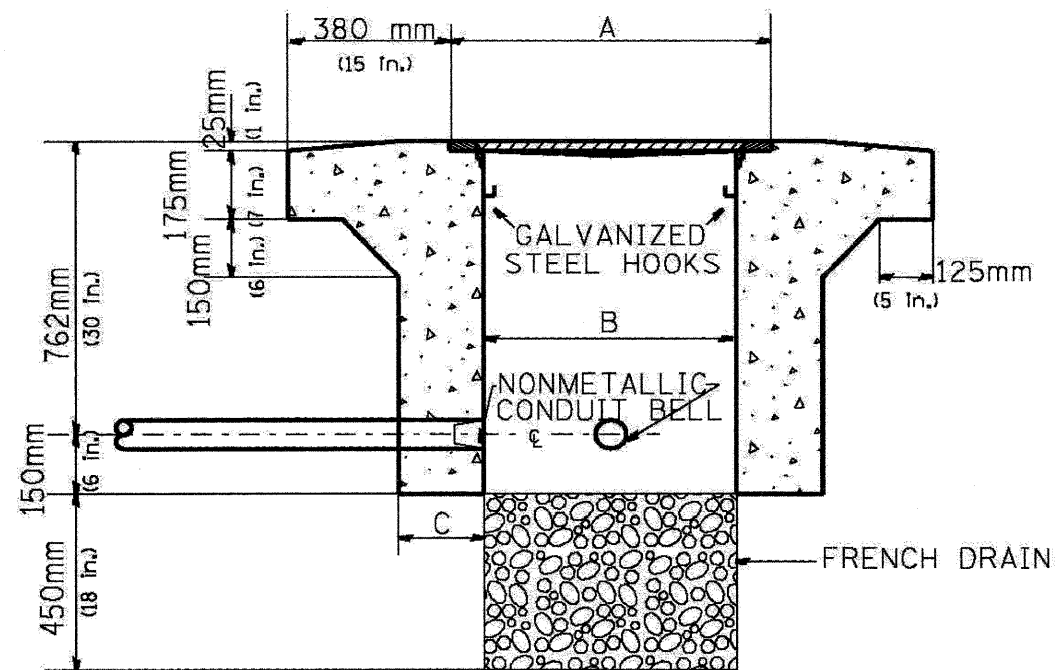
A	711 mm (28")
B	559 mm (22")
C	200 mm (8")

(FRAME AND COVER 118 Kg. (260 LBS.) MIN.)

HEAVY DUTY HANDHOLE SPECIAL MINIMUM DIMENSIONS

A	800 mm (31.5")
B	762 mm (30")
C	250 mm (10")

(FRAME AND COVER 184 Kg. (405 LBS.))



ELEVATION

PC CONCRETE - HEAVY DUTY HAND HOLE

REVISIONS	
NAME	DATE

ILLINOIS DEPARTMENT OF TRANSPORTATION  
FAI ROUTE 55 (BLACK ROAD TO U.S. ROUTE 30)  
NOISE ABATEMENT WALLS

PC CONCRETE - HEAVY DUTY  
HAND HOLE

SCALE: NTS

DATE 02/06/09

DRAWN BY

CHECKED BY

**TENG**

TENG & ASSOCIATES, INC.  
ENGINEERS/ARCHITECTS/PLANNERS  
CHICAGO, ILLINOIS