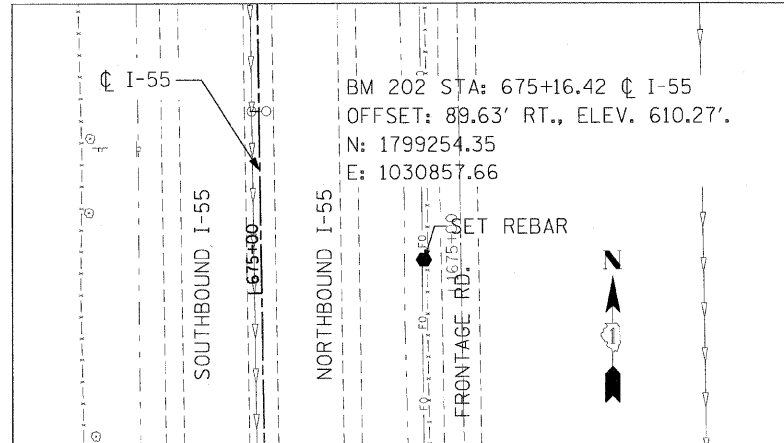
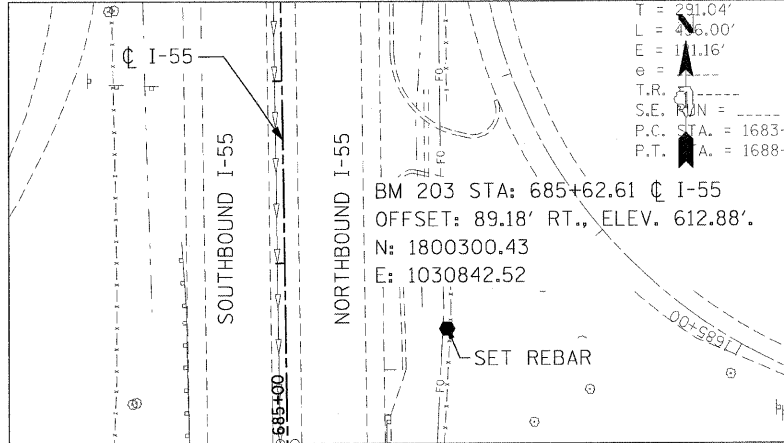


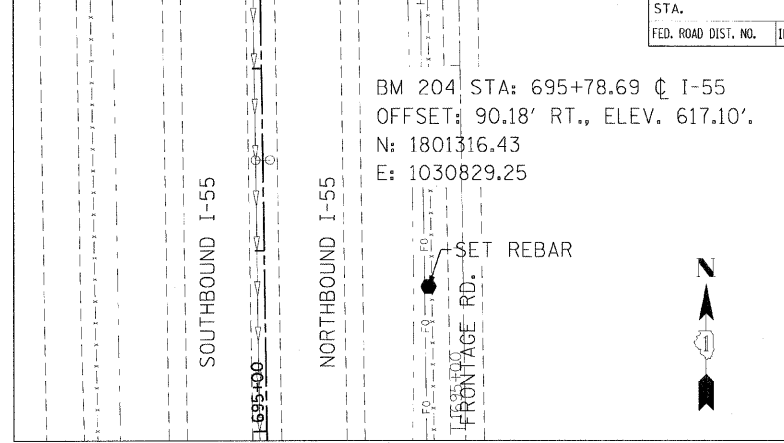
F.A.I. RTE.	SECTION	COUNTY	TOTAL SHEETS	SHEET NO.
55	99 (1&2) I-12	WILL	147	24
STA.		TO STA.		
FED. ROAD DIST. NO.		ILLINOIS FED. AID PROJECT		
ALIGN-9 OF 10				



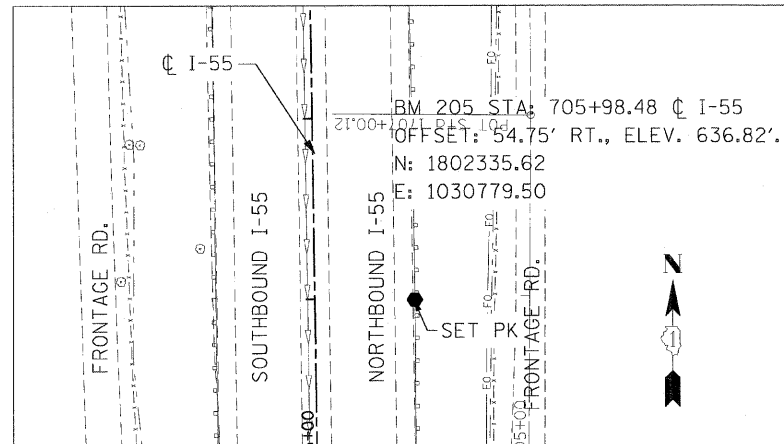
BENCHMARK 202



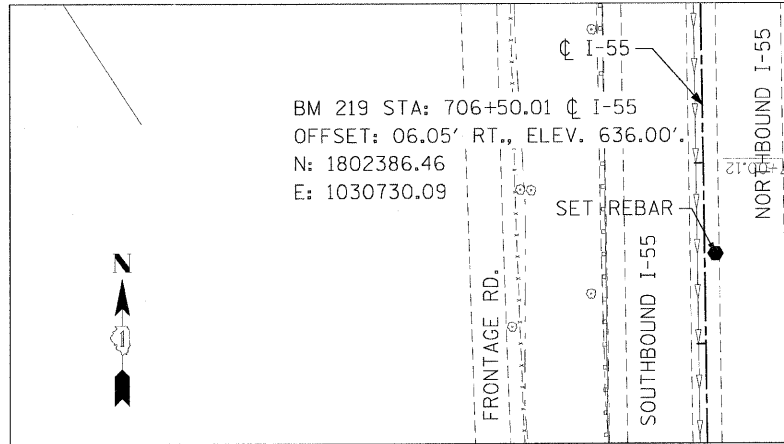
BENCHMARK 203



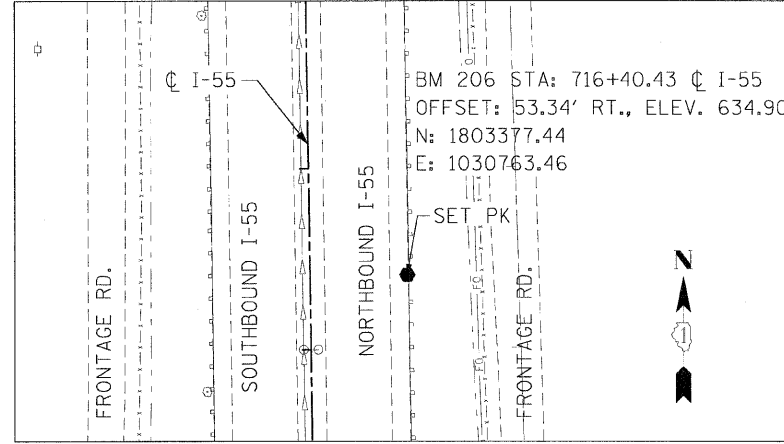
BENCHMARK 204



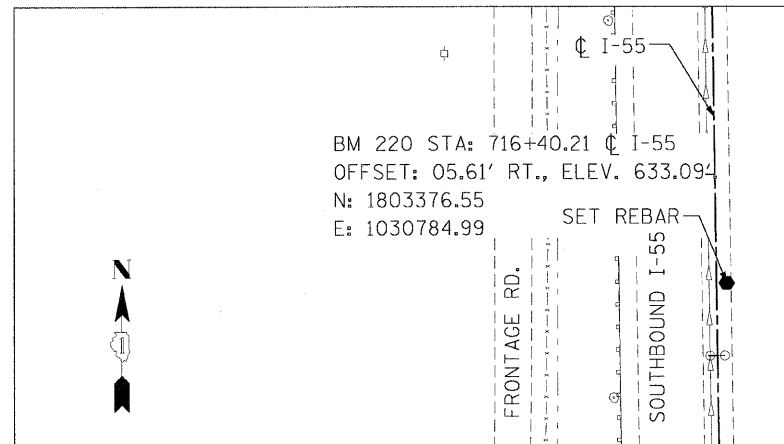
BENCHMARK 205



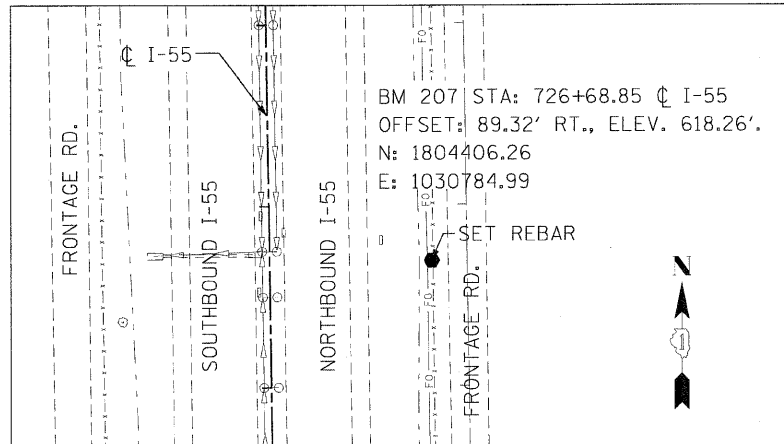
BENCHMARK 219



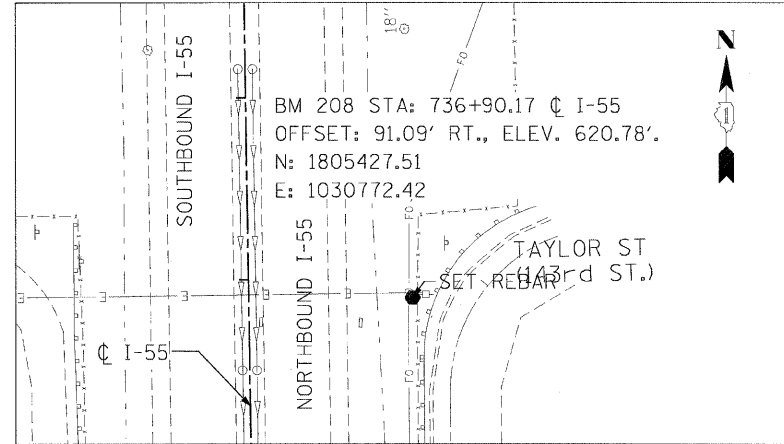
BENCHMARK 206



BENCHMARK 220



BENCHMARK 207



BENCHMARK 208

REVISIONS	
NAME	DATE

ILLINOIS DEPARTMENT OF TRANSPORTATION
 FAI ROUTE 55
 US 30 (PLAINFIELD ROAD) TO WEBER ROAD

ALIGNMENT, TIES AND
 BENCHMARKS

SCALE: NONE
 DATE: 2-06-09

DRAWN BY: MMS
 CHECKED BY: DM

