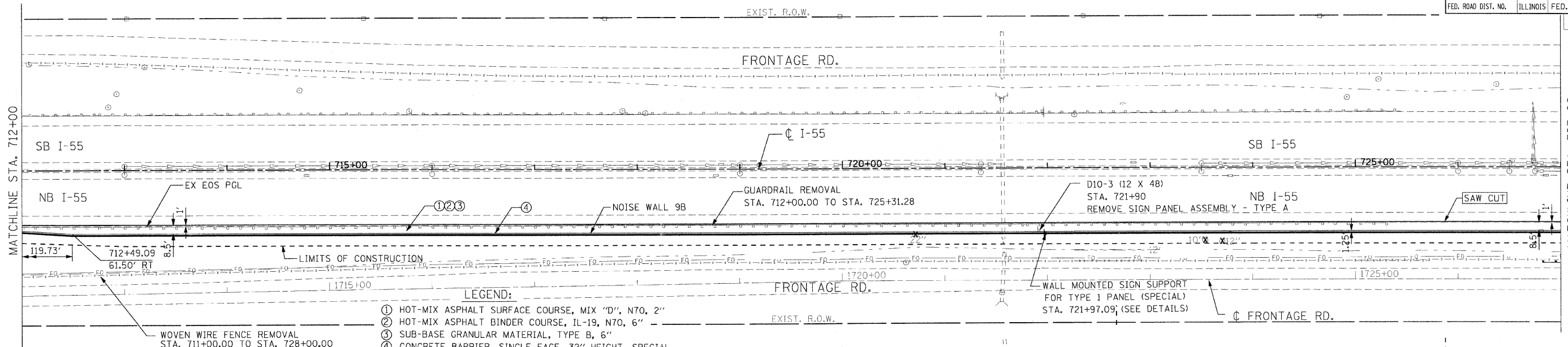
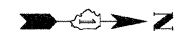
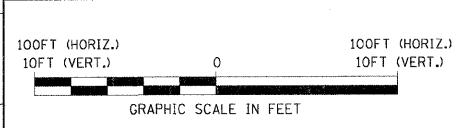
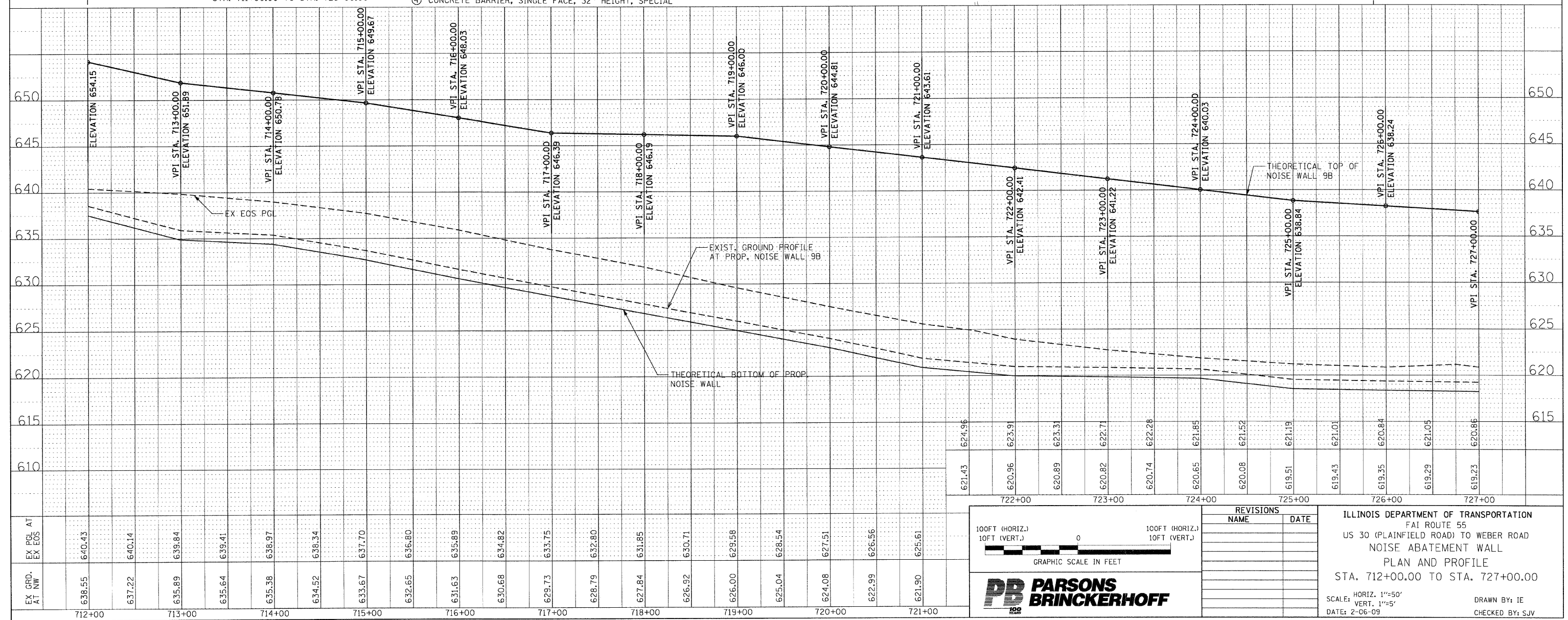


F.A.I. RTE.	SECTION	COUNTY	TOTAL SHEETS	SHEET NO.
55	99 (1&2) I-12	WILL	147	33
STA. 712+00.00 TO STA. 727+00.00		ILLINOIS FED. AID PROJECT		



- LEGEND:**
- ① HOT-MIX ASPHALT SURFACE COURSE, MIX "D", N70, 2"
 - ② HOT-MIX ASPHALT BINDER COURSE, IL-19, N70, 6"
 - ③ SUB-BASE GRANULAR MATERIAL, TYPE B, 6"
 - ④ CONCRETE BARRIER, SINGLE FACE, 32" HEIGHT, SPECIAL



REVISIONS	
NAME	DATE

ILLINOIS DEPARTMENT OF TRANSPORTATION
 FAI ROUTE 55
 US 30 (PLAINFIELD ROAD) TO WEBER ROAD
 NOISE ABATEMENT WALL
 PLAN AND PROFILE
 STA. 712+00.00 TO STA. 727+00.00

SCALE: HORIZ. 1"=50'
 DATE: 2-06-09

DRAWN BY: IE
 CHECKED BY: SJV

