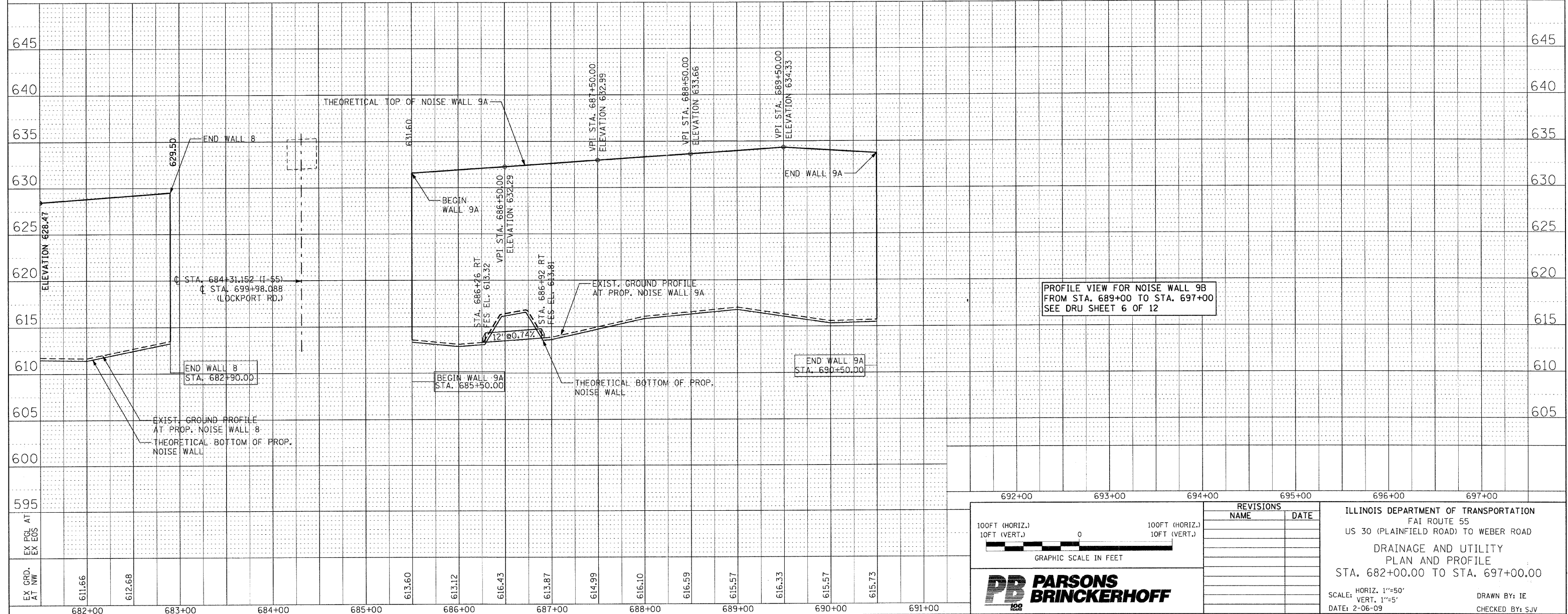
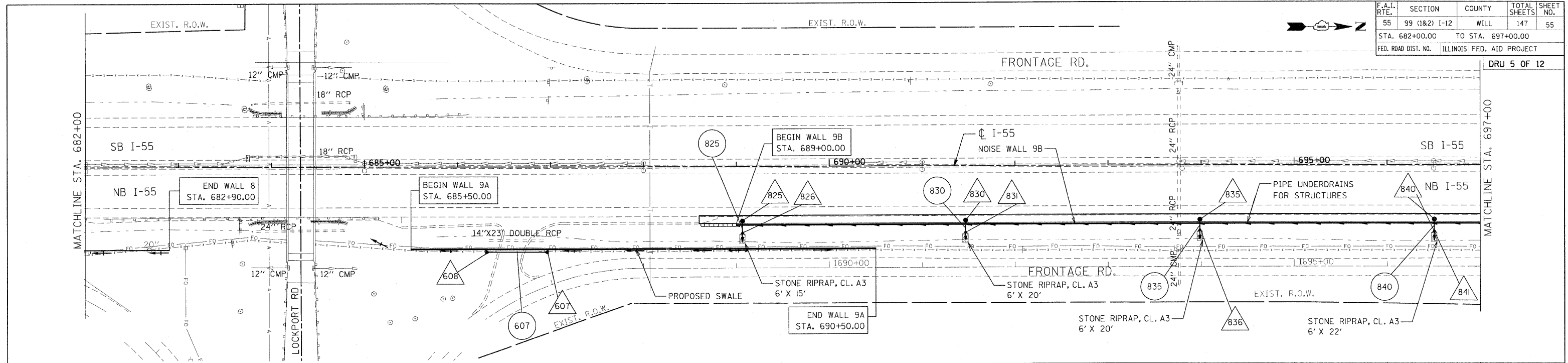
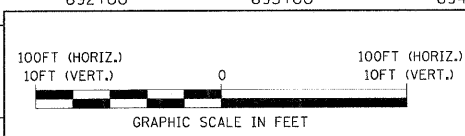


F.A.I. RTE.	SECTION	COUNTY	TOTAL SHEETS	SHEET NO.
55	99 (1&2) I-12	WILL	147	55
STA. 682+00.00		TO STA. 697+00.00		
FED. ROAD DIST. NO.		ILLINOIS FED. AID PROJECT		



PROFILE VIEW FOR NOISE WALL 9B FROM STA. 689+00 TO STA. 697+00 SEE DRU SHEET 6 OF 12



REVISIONS	
NAME	DATE

ILLINOIS DEPARTMENT OF TRANSPORTATION
 FAI ROUTE 55
 US 30 (PLAINFIELD ROAD) TO WEBER ROAD
 DRAINAGE AND UTILITY
 PLAN AND PROFILE
 STA. 682+00.00 TO STA. 697+00.00

SCALE: HORIZ. 1"=50'
 VERT. 1"=5'
 DATE: 2-06-09

DRAWN BY: IE
 CHECKED BY: SJV

