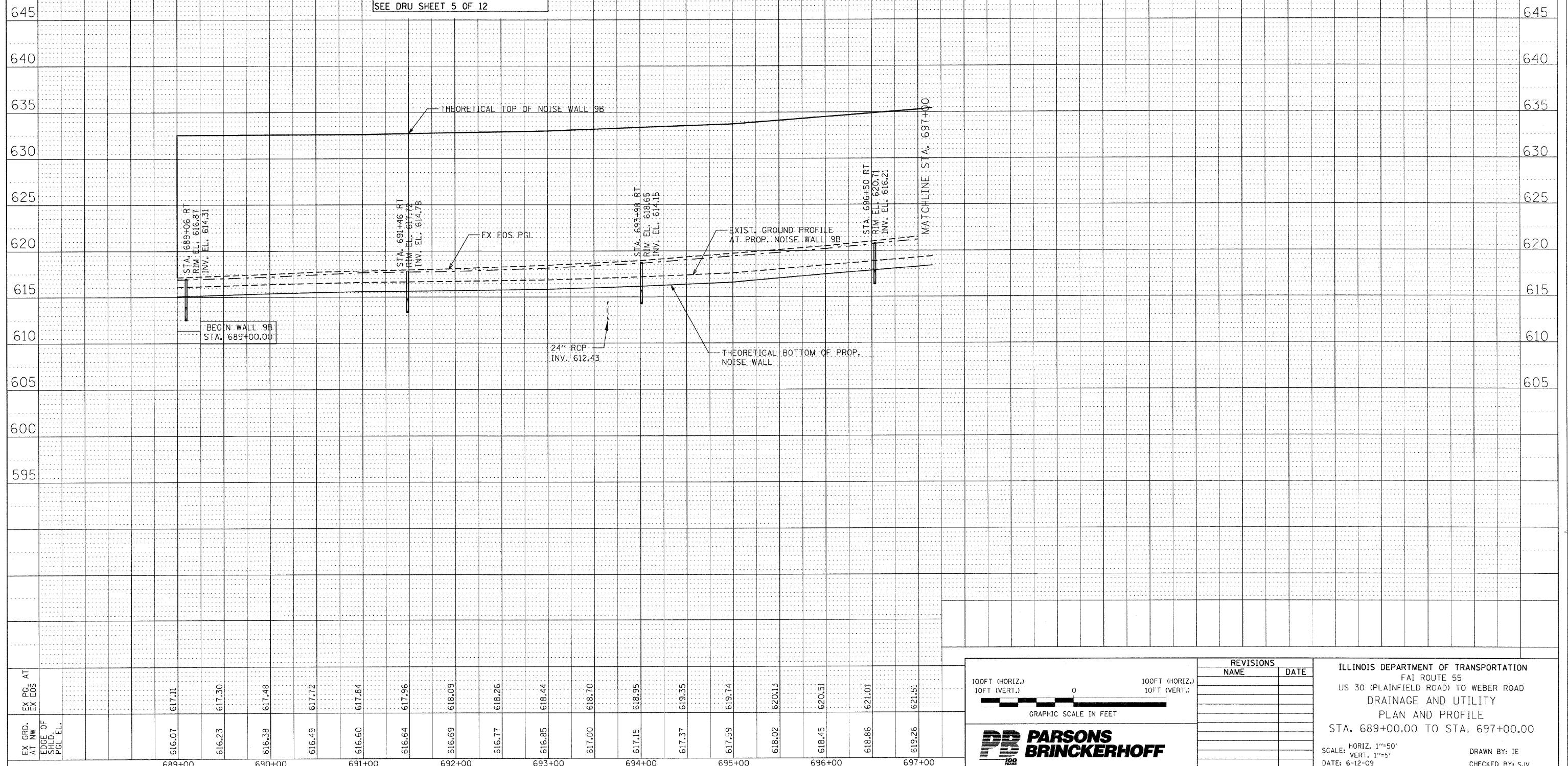


F.A.I. RTE.	SECTION	COUNTY	TOTAL SHEETS	SHEET NO.
55	99 (1&2) I-12	WILL	147	56
STA. 689+00.00		TO STA. 697+00.00		
FED. ROAD DIST. NO.	ILLINOIS	FED. AID PROJECT		
DRU 6 OF 12				

PLAN VIEW FOR NOISE WALL 9B  
FROM STA. 689+00 TO STA. 697+00  
SEE DRU SHEET 5 OF 12



EX GRD. AT NW	EX PGL AT	EX EOS
EDGE OF SHLD. PGL EL.		
616.07	617.11	
616.23	617.30	
616.38	617.48	
616.49	617.72	
616.60	617.84	
616.64	617.96	
616.69	618.09	
616.77	618.26	
616.85	618.44	
617.00	618.70	
617.15	618.95	
617.37	619.35	
617.59	619.74	
618.02	620.13	
618.45	620.51	
618.86	621.01	
619.26	621.51	
689+00	690+00	691+00
692+00	693+00	694+00
695+00	696+00	697+00

100FT (HORIZ.)  
10FT (VERT.)

0

100FT (HORIZ.)  
10FT (VERT.)

GRAPHIC SCALE IN FEET

REVISIONS	
NAME	DATE

ILLINOIS DEPARTMENT OF TRANSPORTATION  
FAI ROUTE 55  
US 30 (PLAINFIELD ROAD) TO WEBER ROAD  
DRAINAGE AND UTILITY  
PLAN AND PROFILE  
STA. 689+00.00 TO STA. 697+00.00

SCALE: HORIZ. 1"=50'  
VERT. 1"=5'

DATE: 6-12-09

DRAWN BY: IE  
CHECKED BY: SJV

FINAL