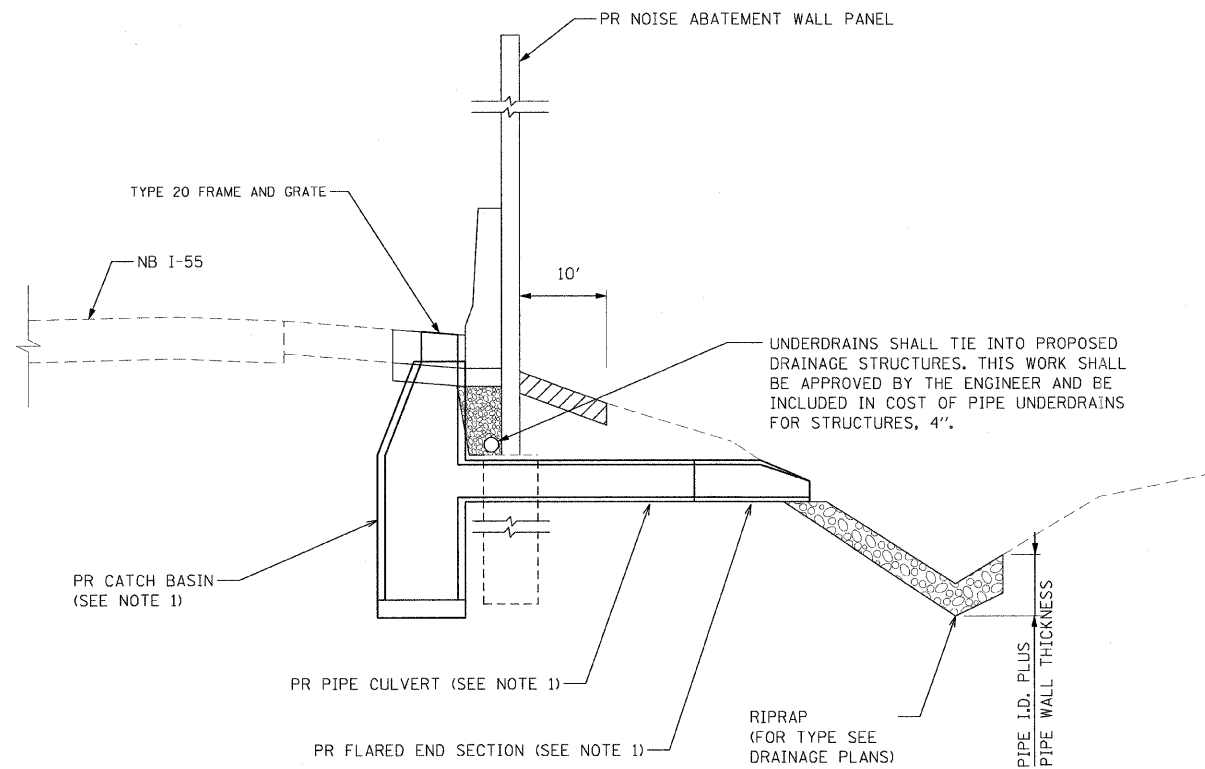
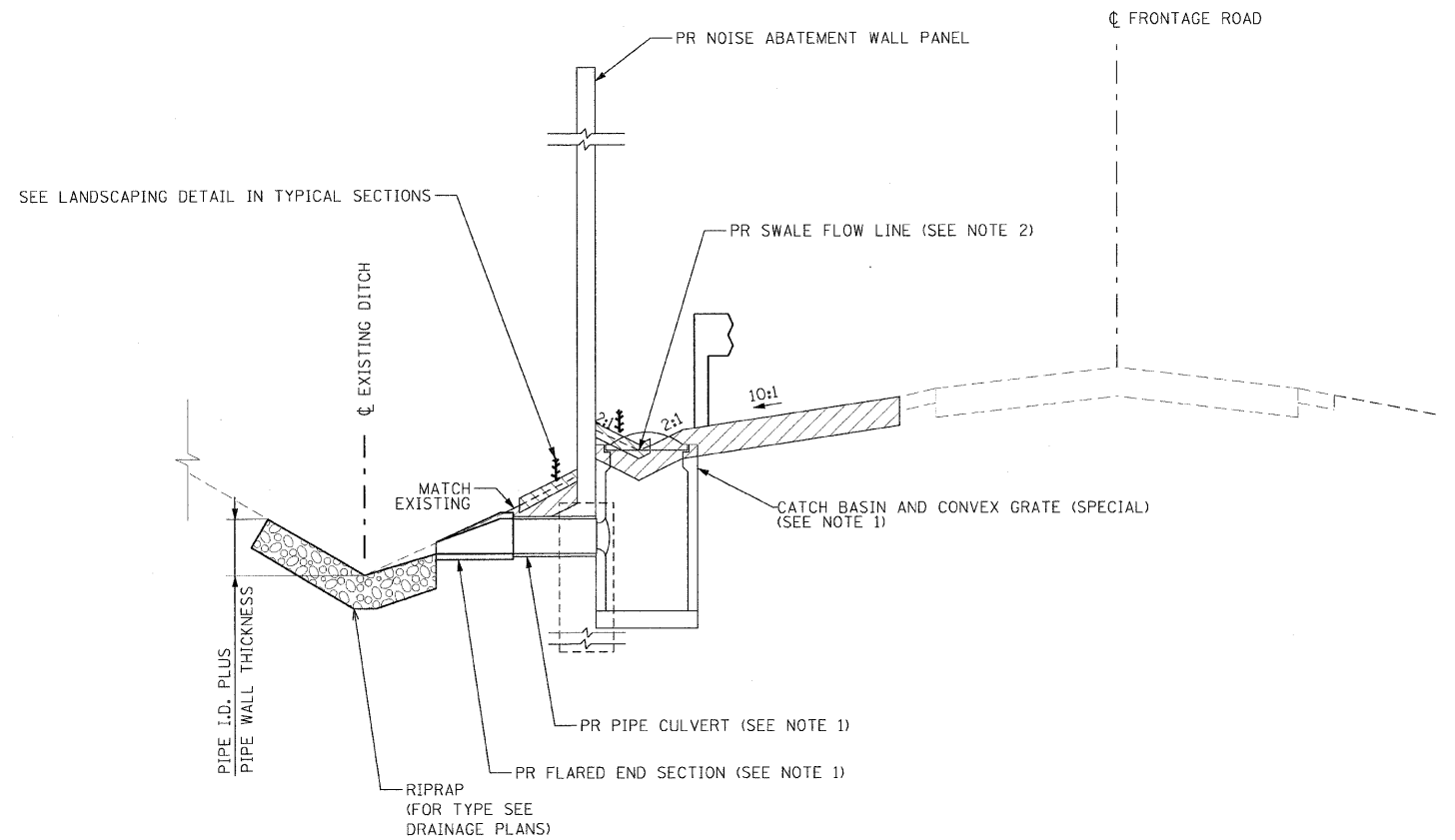


| F.A.I. RTE.         | SECTION       | COUNTY           | TOTAL SHEETS | SHEET NO. |
|---------------------|---------------|------------------|--------------|-----------|
| 55                  | 99 (1&2) I-12 | WILL             | 147          | 63        |
| STA.                |               | TO STA.          |              |           |
| FED. ROAD DIST. NO. | ILLINOIS      | FED. AID PROJECT |              |           |



PROPOSED TYPICAL DRAINAGE STRUCTURE - WALL 7 AND 9B

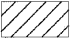
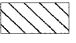

STA. 611+35.00 TO STA. 629+51.00  
 STA. 689+00.00 TO STA. 730+00.00



PROPOSED TYPICAL DRAINAGE STRUCTURE - WALL 8, 9A AND 9C

STA. 654+00.00 TO STA. 682+90.00  
 STA. 685+50.00 TO STA. 690+50.00  
 STA. 728+00.00 TO STA. 737+50.00

LEGEND

-  TOPSOIL FURNISH AND PLACE, 6"
-  COMPOST FURNISH AND PLACE, 4"
-  RIP RAP

NOTES

1. SEE DRAINAGE PLANS FOR TYPE AND SIZES OF DRAINAGE ITEMS.
2. COMPOST IS SHOWN BEFORE INCORPORATION INTO TOPSOIL BY TILLING. SWALE FLOW LINE IS THE FINISHED GRADE AFTER COMPOST COMPACTION. RIM ELEVATION SHOWN ON DRAINAGE SCHEDULE EQUALS SWALE FLOW LINE.

| REVISIONS |      |
|-----------|------|
| NAME      | DATE |
|           |      |
|           |      |
|           |      |
|           |      |
|           |      |
|           |      |
|           |      |
|           |      |
|           |      |
|           |      |

ILLINOIS DEPARTMENT OF TRANSPORTATION  
 FAI ROUTE 55  
 US 30 (PLAINFIELD ROAD) TO WEBER ROAD

DRAINAGE DETAIL

SCALE: NTS  
 DATE: 6-12-09

DRAWN BY: MMS  
 CHECKED BY: DM



FINAL