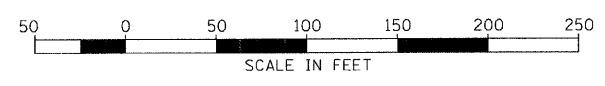
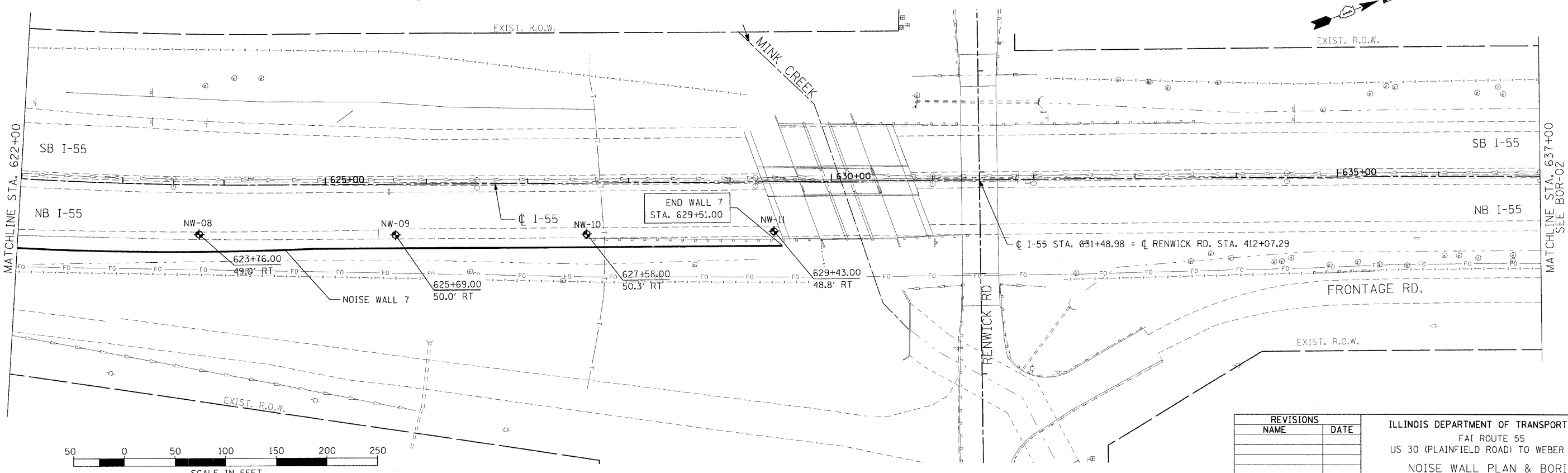
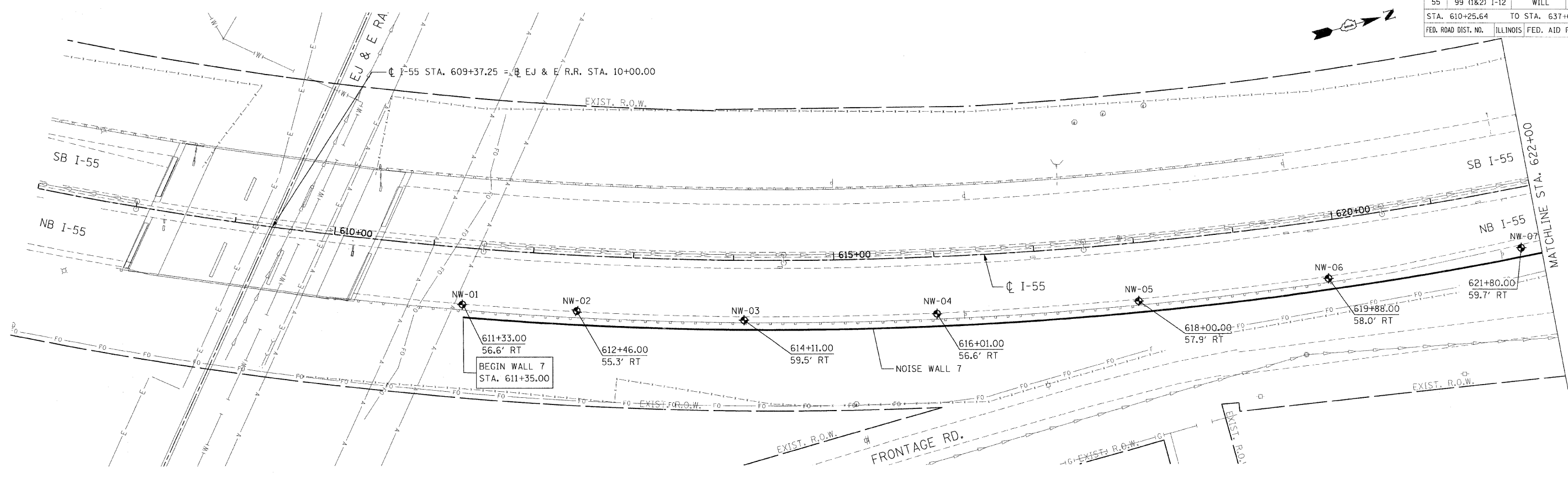


F.A.I. RTE.	SECTION	COUNTY	TOTAL SHEETS	SHEET NO.
55	99 (1&2) I-12	WILL	147	101
STA. 610+25.64		TO STA. 637+00.00		
FED. ROAD DIST. NO.		ILLINOIS FED. AID PROJECT		



REVISIONS	
NAME	DATE

ILLINOIS DEPARTMENT OF TRANSPORTATION
 FAI ROUTE 55
 US 30 (PLAINFIELD ROAD) TO WEBER ROAD
 NOISE WALL PLAN & BORING
 LOCATIONS
 NOISE WALL 7
 SCALE: 1" = 50'
 DATE: 6-12-09
 DRAWN BY: MMS
 CHECKED BY: DM



FINAL