

★ 91+1=92

F.A.P. RTE.	SECTION	COUNTY	TOTAL SHEETS	SHEET NO.
0353	0303.1B-1	COOK	91	1
FED. ROAD DIST. NO. 1	ILLINOIS	CONTRACT NO. 60C05		

STATE OF ILLINOIS
DEPARTMENT OF TRANSPORTATION
DIVISION OF HIGHWAYS

**PROPOSED
HIGHWAY PLANS**

F.A.P. ROUTE 0353 (US 30)
SECTION 0303.1B-1
PROJECT: *ESP-0353(014)*
COOK COUNTY
C-91-108-07

US ROUTE 30 (LINCOLN HIGHWAY)
OVER IL ROUTE 394
BRIDGE AND ROADWAY REHABILITATION

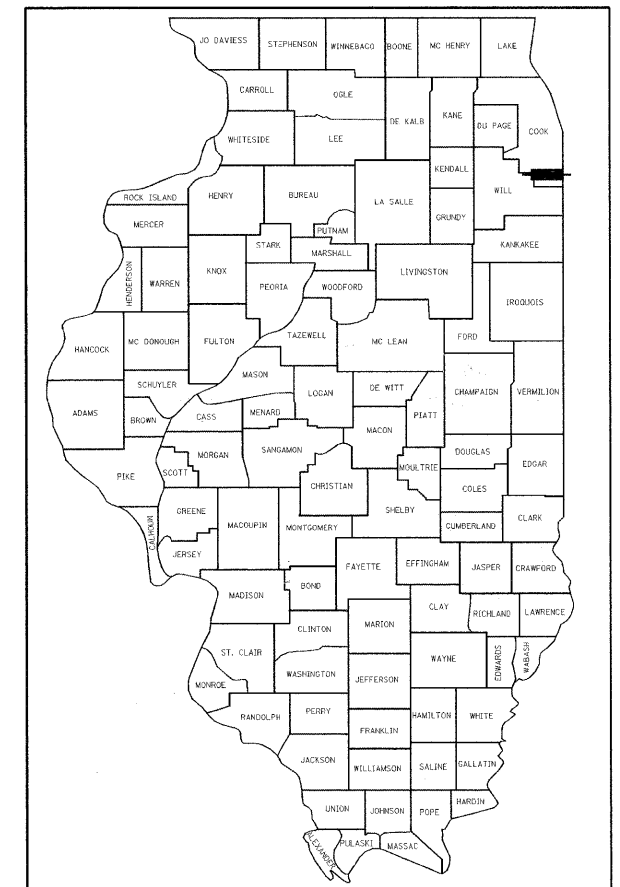
INDEX OF SHEETS
FOR INDEX OF SHEETS, SEE SHEET NO. 2

DESIGN NUMBER
D-91-108-07

DESIGN DESIGNATION
4340(30) ARTERIAL 9.15 (FD-20)

TRAFFIC DATA
ADT (2021): 17,200
DESIGN SPEED: 45 MPH
POSTED SPEED: 40 MPH

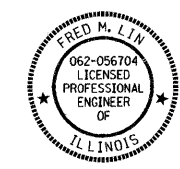
PROJECT LOCATED IN VILLAGE OF FORD HEIGHTS



LOCATION OF SECTION INDICATED THUS: —



SIGNED: *R.W. Stafford*
DATE: 4/27/09
EXPIRES: NOVEMBER 30, 2009
DRAWING NOS: 1-8, 10-12, 23-45 & 76-91



SIGNED: *Fred M. Lin*
DATE: 4/27/2009
EXPIRES: NOVEMBER 30, 2009
DRAWING NOS: 9, 13-22

Lin Engineering, Ltd.
Consulting Engineers
Chatham, Illinois
Westmont, Illinois

BOWMAN, BARRETT & ASSOCIATES INC.
CONSULTING ENGINEERS
Chicago, Illinois
312.228.0100
www.bbainc.com

STATE OF ILLINOIS
DEPARTMENT OF TRANSPORTATION
DIVISION OF HIGHWAYS

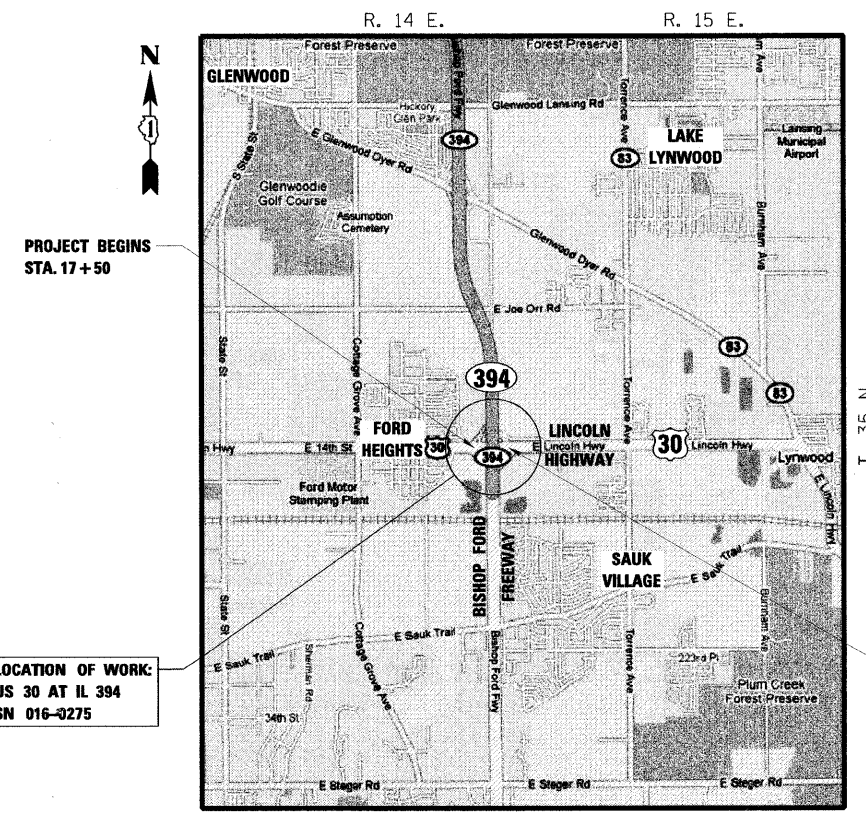
SUBMITTED APRIL 30, 2009

Diane M. O'Keefe
DEPUTY DIRECTOR OF HIGHWAYS, REGION ENGINEER
June 26, 2009

Charles G. Ingersoll
ENGINEER OF DESIGN AND ENVIRONMENT
June 26, 2009

Christine M. Reed
DIRECTOR OF HIGHWAYS, CHIEF ENGINEER

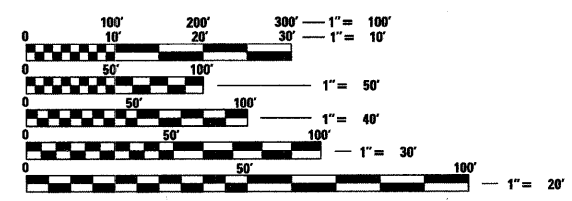
PRINTED BY THE AUTHORITY
OF THE STATE OF ILLINOIS



PROJECT BEGINS
STA. 17+50

LOCATION OF WORK:
US 30 AT IL 394
SN 016-0275

PROJECT ENDS
STA. 22+50



FULL SIZE PLANS HAVE BEEN PREPARED USING STANDARD ENGINEERING SCALES. REDUCED SIZED PLANS WILL NOT CONFORM TO STANDARD SCALES. IN MAKING MEASUREMENTS ON REDUCED PLANS, THE ABOVE SCALES MAY BE USED.

J.U.L.I.E.
JOINT UTILITY LOCATION INFORMATION FOR EXCAVATION
1-800-892-0123
OR 811

PROJECT ENGINEER: ERSKINE KLYCE
PROJECT MANAGER: RAJENDRA SHAH

CONTRACT NO. 60C05

LOCATION MAP

0 1/2 MILE 1 MILE 1" = 1/2 MILE
GROSS LENGTH OF PROJECT = 500 FT = 0.09 Miles
NET LENGTH OF PROJECT = 274 FT = 0.05 Miles