

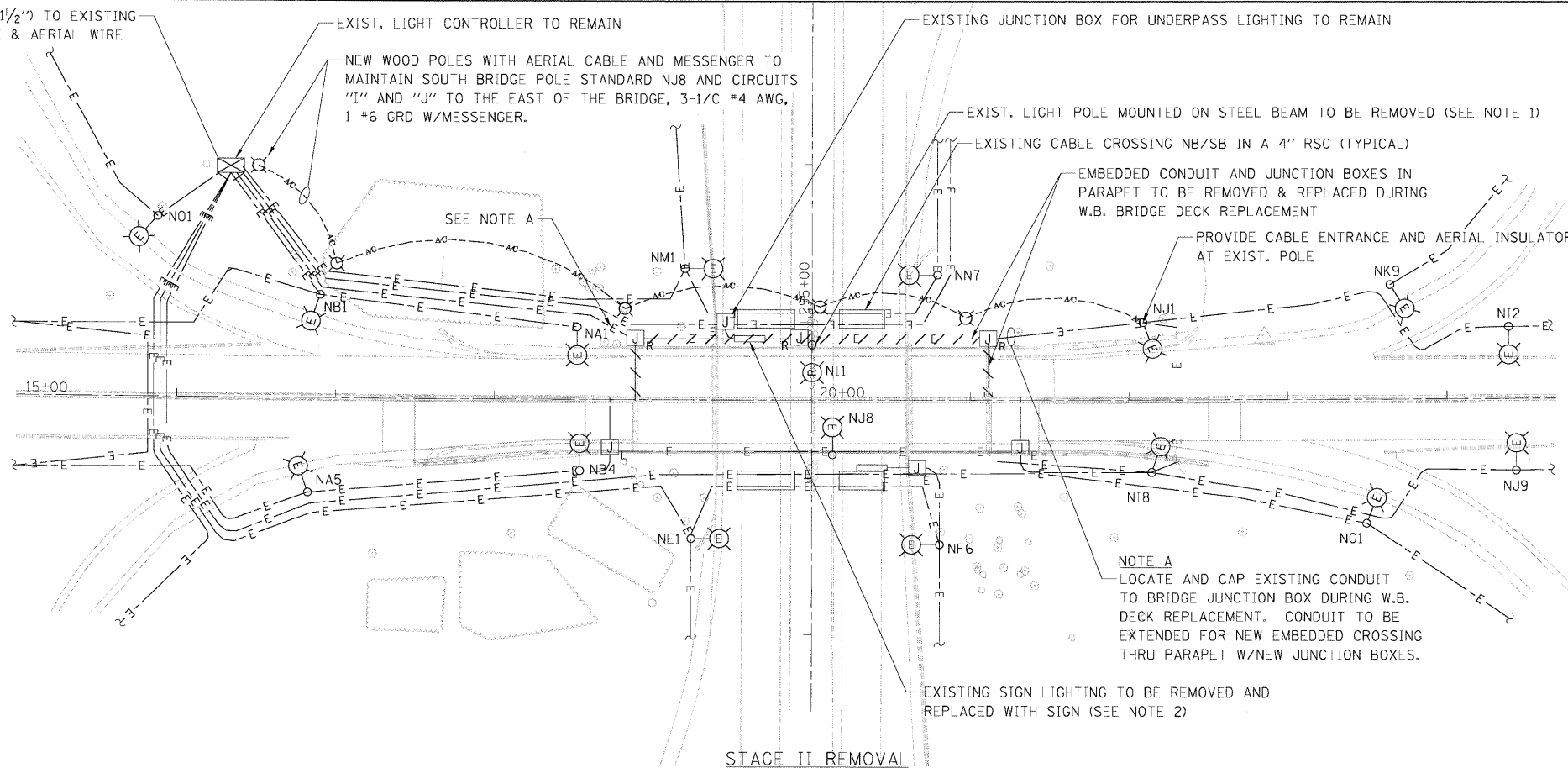
NOTES

1. MAINTAIN EXISTING SOUTH POLE STANDARD NJ8 AND CIRCUIT "I" AND "J" WITH TEMPORARY AERIAL CABLE AND TEMPORARY WOOD POLES DURING W.B. BRIDGE DECK REPLACEMENT (COORDINATE WITH PHASING FOR TEMP. LIGHTING).
2. SIGN LIGHTING FIXTURES, CONDUIT, JUNCTION BOXES AND WIRE TO BE REMOVED WITH SIGN STRUCTURE. WIRE TO BE REMOVED TO JUNCTION BOX ON PIER THAT REMAINS.

THE EXISTING UNDERPASS LUMINAIRES, SIGN LUMINAIRES AND LIGHT POLES THAT ARE REMOVED SHALL BE SALVAGED TO IDOT AND DELIVERED TO A DESIGNATION DETERMINED BY THE ENGINEER.

LEGEND

- E- EXISTING UNITDUCT/CONDUIT
- AC- NEW AERIAL CABLE W/MESSENGER
- ⊗ NEW TEMPORARY WOOD POLE
- ⊙(R) EXISTING BRIDGE POLE TO BE REMOVED AND SALVAGED TO IDOT
- ⊙(E) EXISTING LUMINAIRE TO REMAIN
- ⊗ EXISTING LIGHTING CONTROLLER
- ⊞ EXISTING JUNCTION BOX
(E= EXISTING TO REMAIN;
R= TO REMOVE)

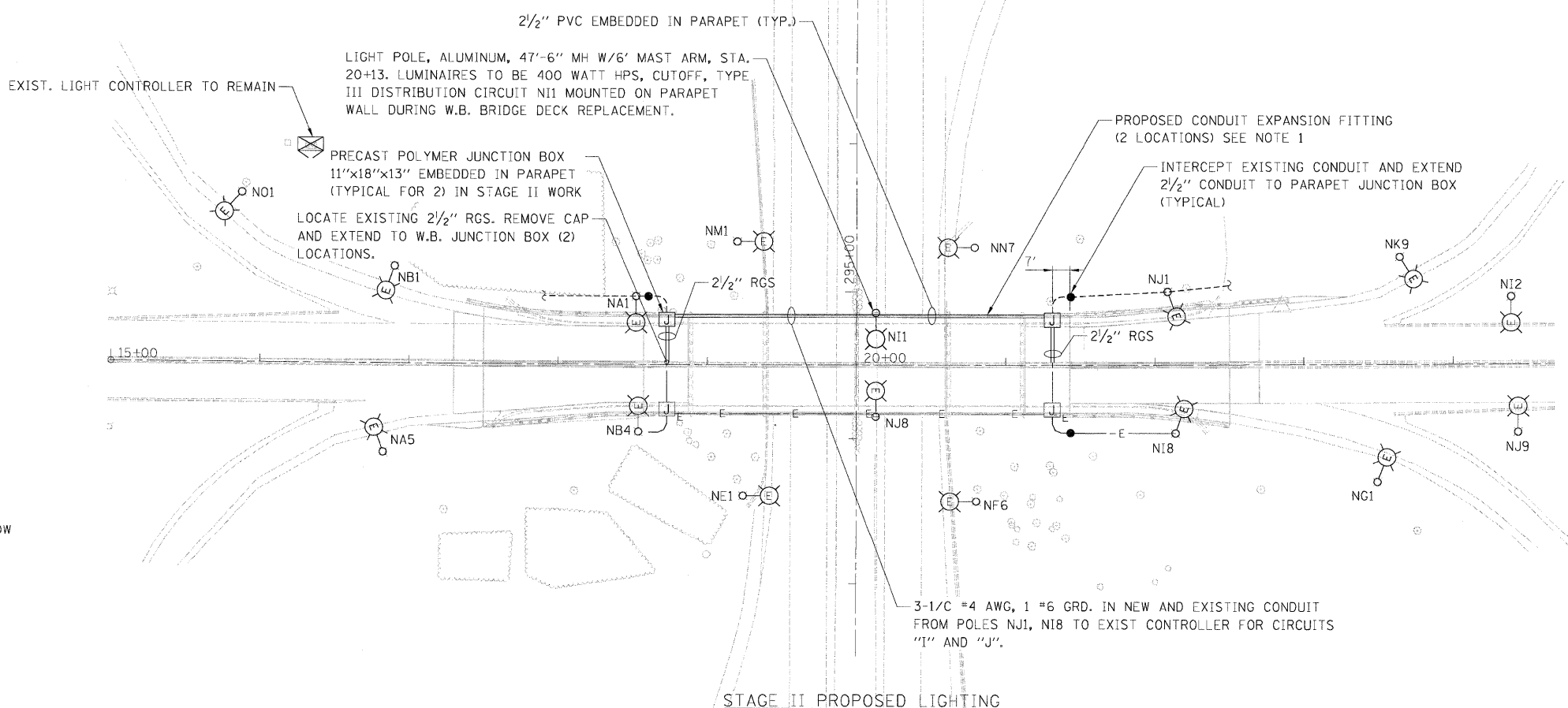


NOTES

1. PROPOSED CONDUIT EXPANSION FITTING ARE REQUIRED AT ALL LOCATIONS WHERE CONDUIT EXTENDS BETWEEN TWO CONCRETE SECTIONS THAT ARE CAPABLE OF MOVEMENT. THE EXPANSION FITTINGS SHALL COMPLY WITH STD. SPEC. ARTICLE 1088.020. COST INCLUDED WITH CONDUIT EMBEDDED IN STRUCTURE, 2 1/2" DIA. PVC (SCHEDULE 40).
2. JUNCTION BOX SHALL BE EMBEDDED IN PARAPET -UPPER PORTION WITH COVER FACING US30 AND MUST BE ACCESSIBLE(TYP.) COORDINATE W/APPROACH PVMT. SEE SHEET 34 FOR DETAIL.

LEGEND

- 2 1/2" PVC CONDUIT EMBEDDED IN PARAPET UNLESS NOTED OTHERWISE
- ⊞ PROPOSED JUNCTION BOX EMBEDDED IN STRUCTURE, PRECAST 11"x18"x13"
- ⊙(E) EXISTING LUMINAIRE TO REMAIN
- ⊙(R) PROPOSED ALUM. POLE 47'-6" MH W/400W HPS LUMINAIRE AND 6' MAST ARM
- ⊗ EXISTING LIGHTING CONTROLLER



BOWMAN, BARRETT & ASSOCIATES INC.
CONSULTING ENGINEERS
Chicago, Illinois
312.228.0100
www.bbainc.com

FILE NAME = D168025-shr-lightstg2.dgn	USER NAME = default	DESIGNED - RR	REVISED -
		DRAWN - LAM	REVISED -
		CHECKED - DF	REVISED -
		DATE - 5/6/2009	REVISED -

STATE OF ILLINOIS	STATE OF ILLINOIS
DEPARTMENT OF TRANSPORTATION	DEPARTMENT OF TRANSPORTATION

STAGE II EXISTING AND PROPOSED LIGHTING PLAN	
SCALE: 1" = 50'	SHEET NO. 2 OF 12 SHEETS
STA. 15+00.00	TO STA. 25+00.00

F.A. RTE.	SECTION	COUNTY	TOTAL SHEETS	SHEET NO.
0353	0303.1B-1	COOK	91	35
FED. ROAD DIST. NO.			ILLINOIS FED. AID PROJECT	

CONTRACT NO. 60C05				
--------------------	--	--	--	--

s:\118\05-cadd\us30\cadd\sheet\118025-shr-lightstg2.dgn