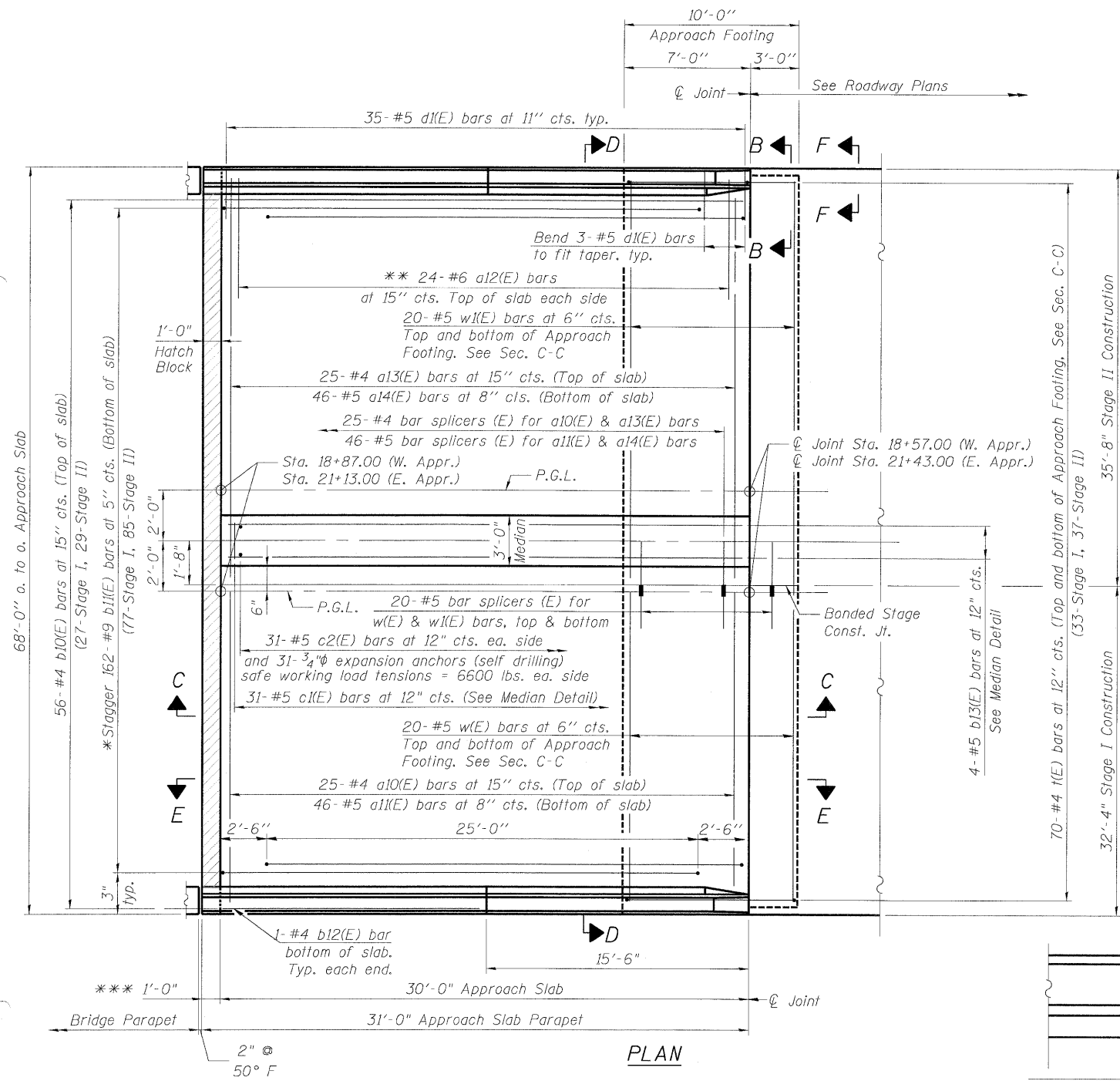
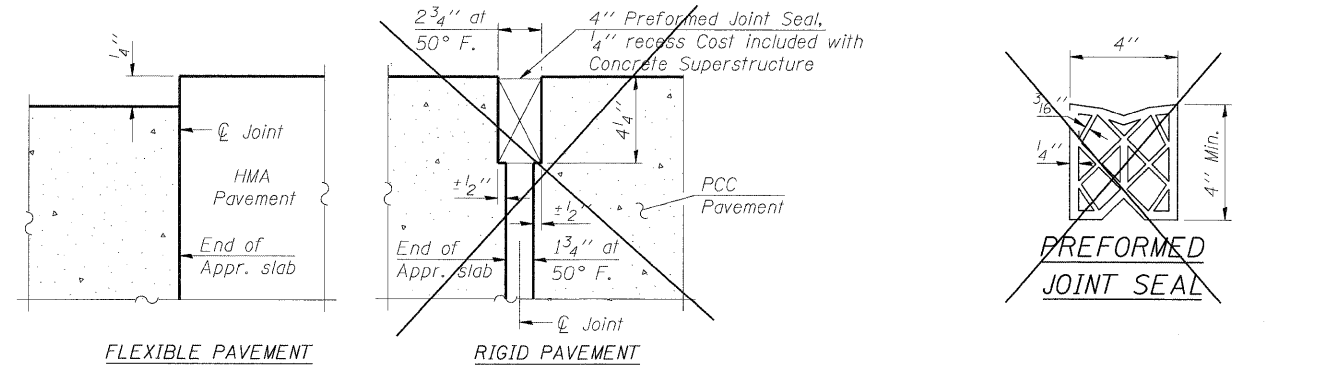


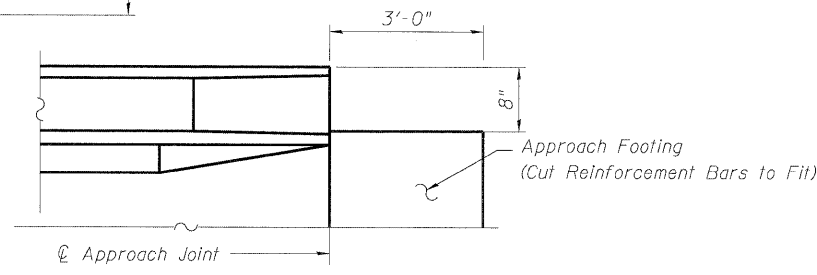
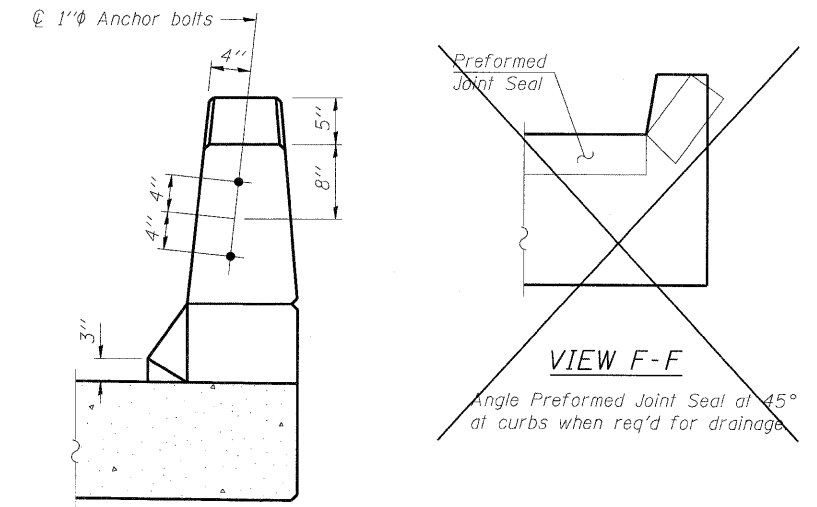
STATE OF ILLINOIS  
DEPARTMENT OF TRANSPORTATION



Notes:  
See sheet S-15 of S-30 for Sections C-C & D-D and View E-E.  
a10(E), a11(E), a13(E), a14(E) and w(E) bar spacings measured perpendicular to  $\text{C} \perp$  Rdwy.



DETAIL A



NOTE: Type B6 curb not shown for clarity.  
See Highway Standard 631031 for details.

APPROACH FOOTING NOTCH FOR  
TRAFFIC BARRIER TERMINAL, TYPE 6

\* Tilt #9 b11(E) bars as required to maintain clearance.  
\*\* Alternate with a10(E) or a13(E) bars, typ. ea. parapet.  
\*\*\* 1'-0" portion of parapet constructed on abutment backwall.

DESIGNED - DF
CHECKED - TAH
DRAWN - LAM
CHECKED - DF

BOWMAN, BARRETT & ASSOCIATES INC.  
CONSULTING ENGINEERS  
Chicago, Illinois  
312.228.0100  
www.bbainc.com  
Job No. 910



SHEET NO. S-14 S-30 SHEETS	F.A.P. RTE.	SECTION	COUNTY	TOTAL SHEETS	SHEET NO.
	0353	0303.1B-1	COOK	91	59
SN 016-0275			CONTRACT NO. 60C05		
FED. ROAD DIST. NO.		ILLINOIS FED. AID PROJECT			

BRIDGE APPROACH SLAB DETAILS I  
STRUCTURE NO. 016-0275