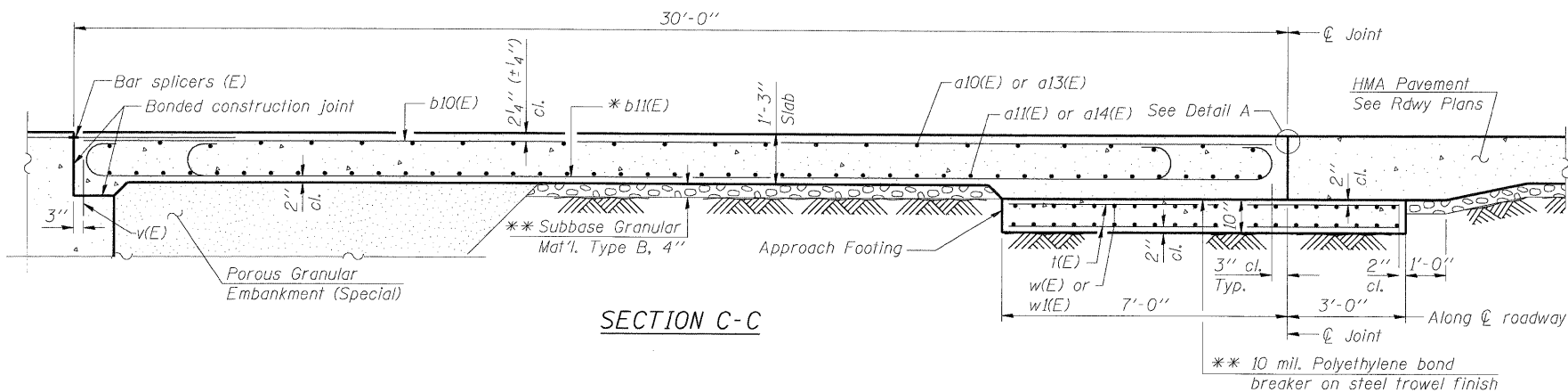


STATE OF ILLINOIS
DEPARTMENT OF TRANSPORTATION

TWO APPROACHES BILL OF MATERIAL

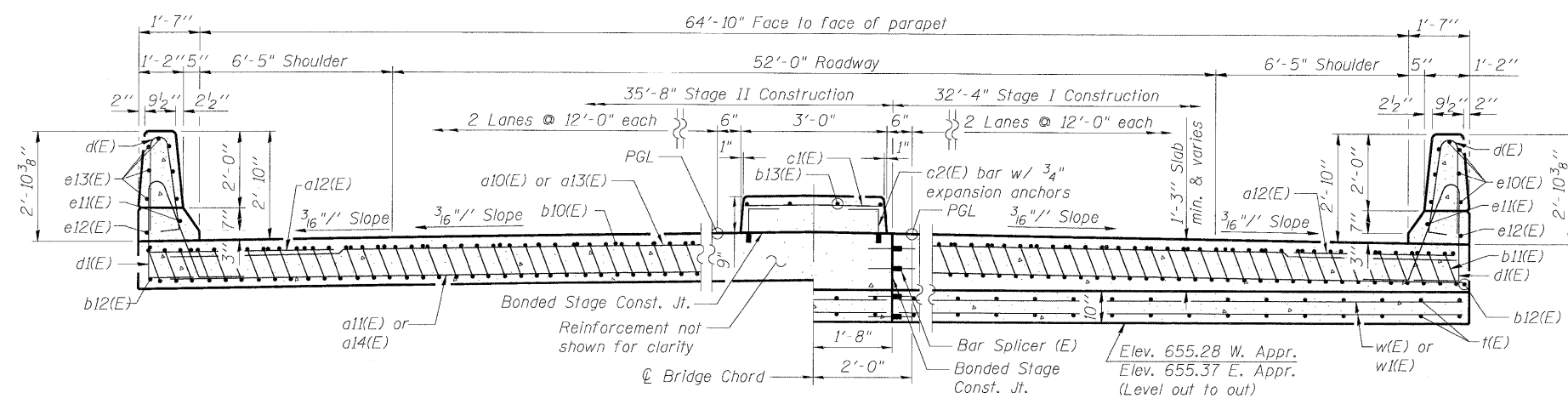


SECTION C-C

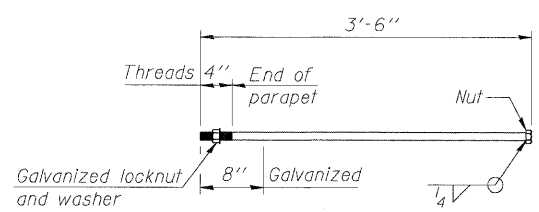
Notes:
See sheet S-14 of S-30 for Detail A and View B-B.
Approach slab and parapet concrete shall be paid for as Concrete Superstructure.
Approach footing concrete shall be paid for as Concrete Structures.
Reinforcement shall be paid for as Reinforcement Bars, Epoxy Coated.
The approach footing maximum applied service bearing pressure (Qmax) = 2.0 ksf.
For bar splicer details, see sheet S-28 of S-30.
Cost of excavation for approach footing included with Concrete Structures.
For Porous Granular Embankment (Special) and drainage treatment details, see sheet S-22 of S-30. Cost included with Concrete Superstructure.
Cost of parapet joint is included with Concrete Superstructure. See sheet S-12 of S-30.

Bar	No.	Size	Length	Shape
a10(E)	50	#4	32'-0"	
a11(E)	92	#5	32'-0"	
a12(E)	96	#6	6'-0"	
a13(E)	50	#4	35'-4"	
a14(E)	92	#5	35'-4"	
b10(E)	112	#4	29'-8"	
b11(E)	324	#9	29'-9"	
b12(E)	4	#4	29'-4"	
b13(E)	8	#5	29'-8"	
c1(E)	62	#5	2'-8"	
c2(E)	124	#5	1'-6"	
d(E)	140	#5	5'-7"	
d1(E)	140	#5	7'-11"	
e10(E)	28	#4	15'-2"	
e11(E)	4	#8	30'-8"	
e12(E)	4	#4	30'-8"	
e13(E)	28	#4	15'-2"	
f(E)	280	#4	9'-8"	
w(E)	80	#5	32'-0"	
w1(E)	80	#5	35'-4"	
Concrete Superstructure		Cu. Yd.	218.0	
Concrete Structures		Cu. Yd.	42	
Reinforcement Bars, Epoxy Coated		Pound	55,640	
Bar Splicers (E)		Each	222	
Bridge Deck Grooving		Sq. Yd.	384	
Protective Coat		Sq. Yd.	495	

* Tilt #9 b11(E) bars as required to maintain clearance.
** Cost included with Concrete Superstructure.
*** 1'-0" portion of parapet constructed on abutment backwall.

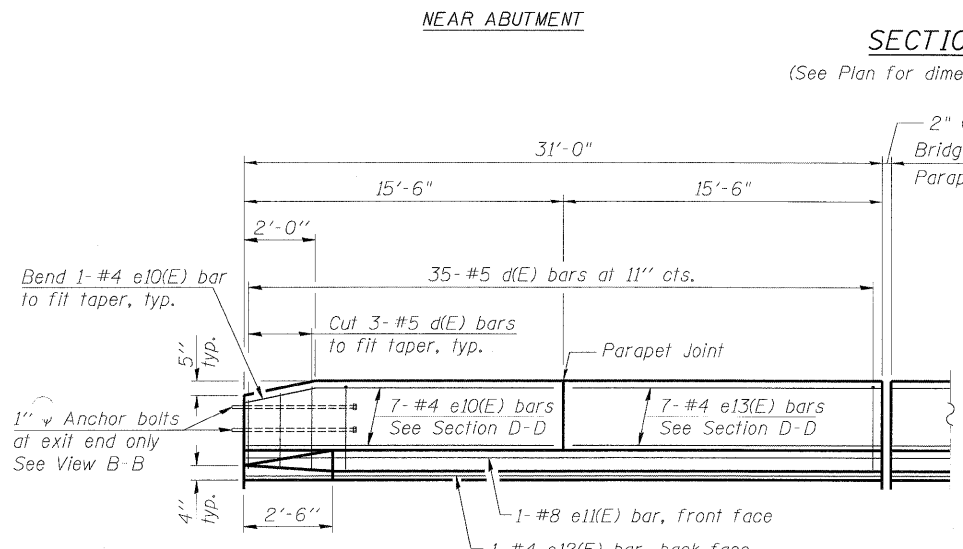


SECTION D-D

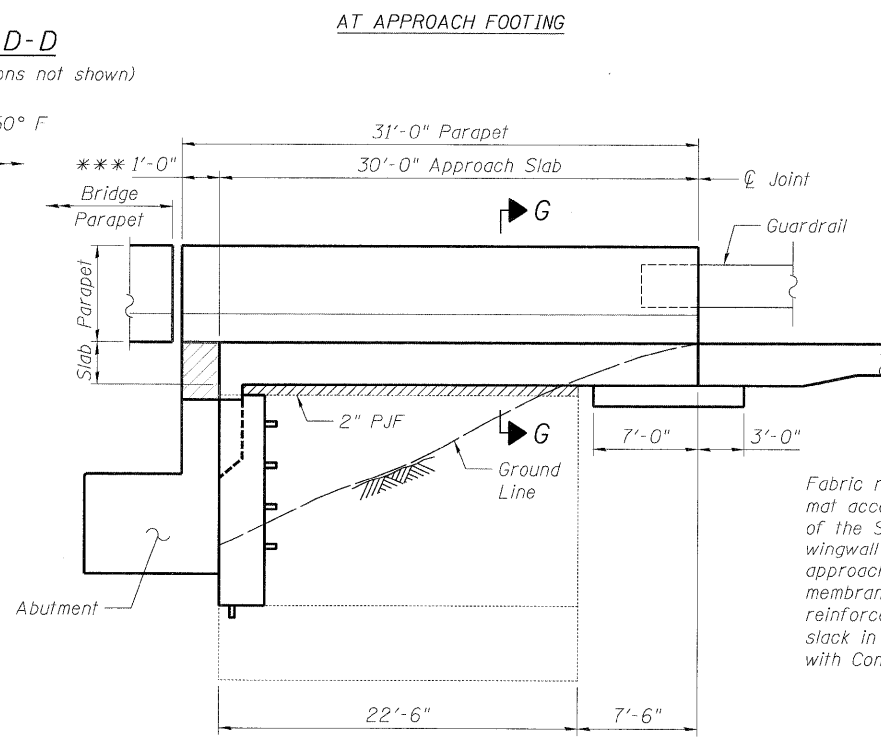


1" ANCHOR BOLT
(Cost included with Concrete Superstructure)

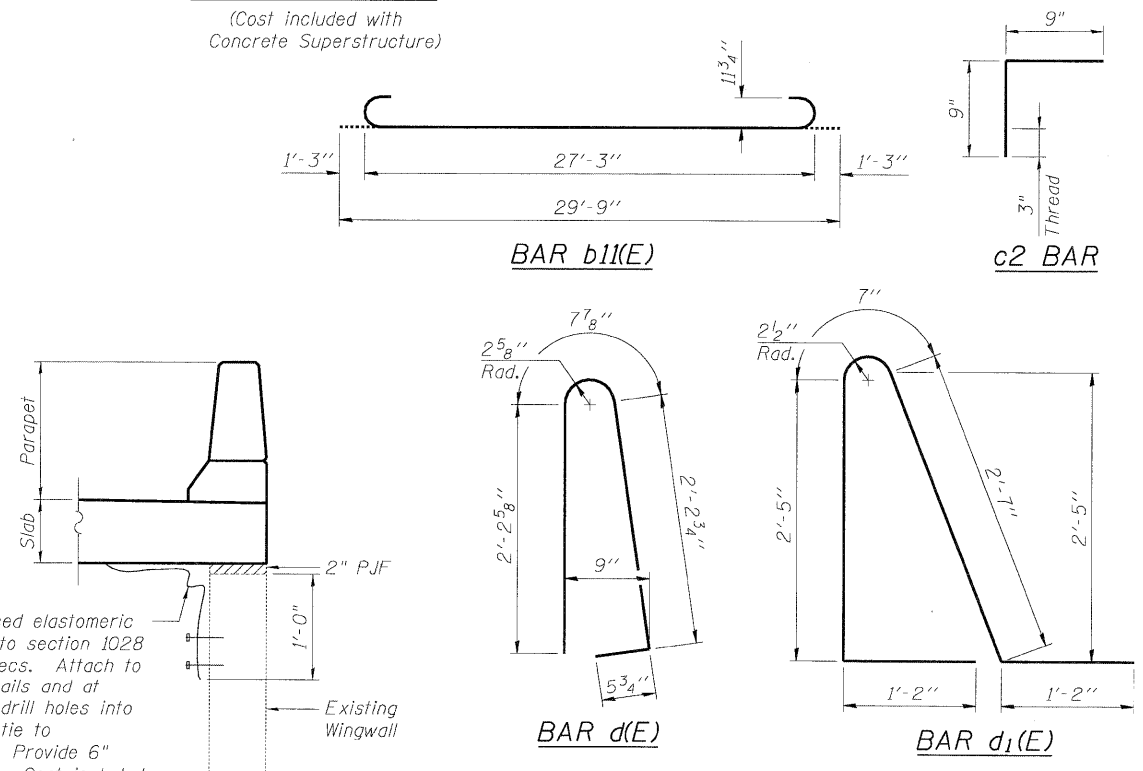
① Extend bars into portion of parapet over abutment



VIEW E-E



WINGWALL ELEVATION



BRIDGE APPROACH SLAB DETAILS II
STRUCTURE NO. 016-0275

DESIGNED - DF
CHECKED - TAH
DRAWN - LAM
CHECKED - DF

BOWMAN, BARRETT & ASSOCIATES INC.
CONSULTING ENGINEERS
Chicago, Illinois
312.228.0100
www.bbandainc.com
Job. No. 910

SHEET NO. S-15 S-30 SHEETS	F.A.P. RTE. 0353	SECTION 0303.1B-1	COUNTY COOK	TOTAL SHEETS 91	SHEET NO. 60
	SN 016-0275		CONTRACT NO. 60C05		
FED. ROAD DIST. NO.		ILLINOIS FED. AID PROJECT			