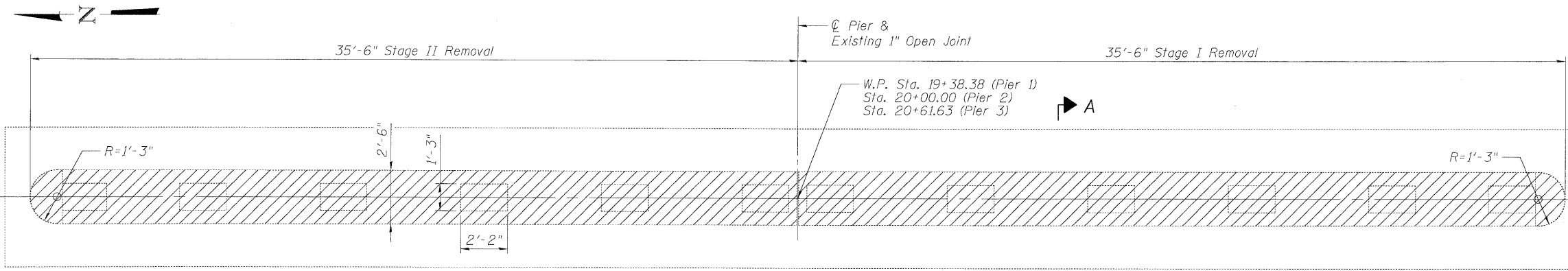


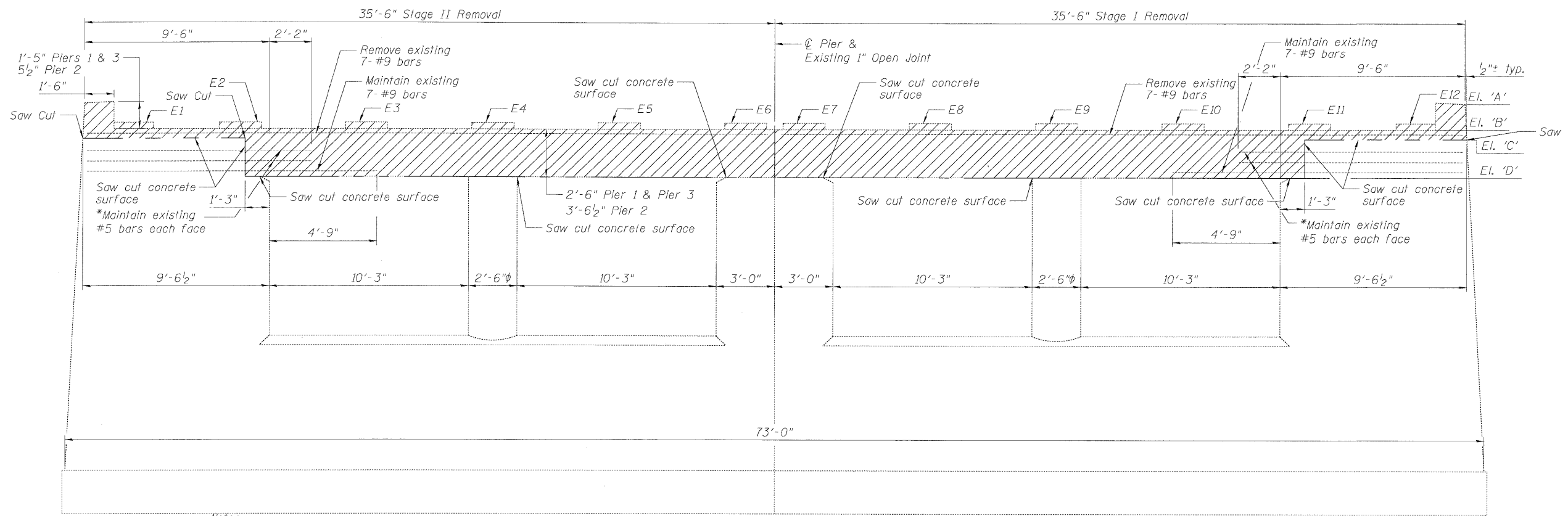
STATE OF ILLINOIS
DEPARTMENT OF TRANSPORTATION



EXISTING PIER PLAN

ELEVATIONS

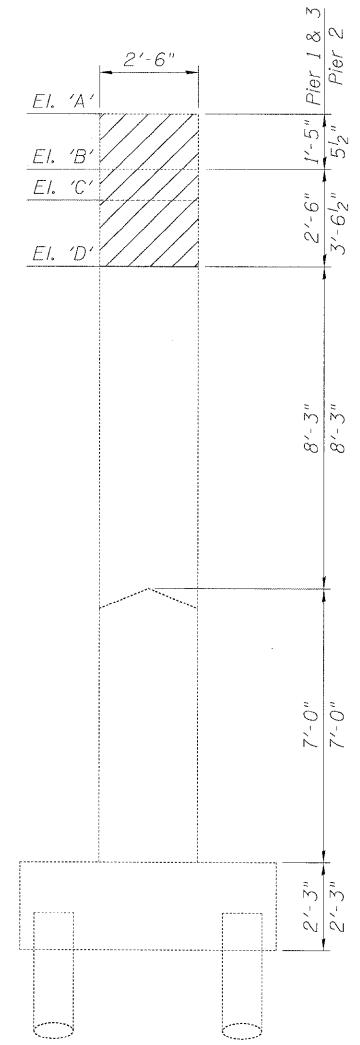
	'A'	'B'	'C'	'D'
Pier 1	654.08	652.66	652.16	650.16
Pier 2	654.15	653.69	653.19	650.15
Pier 3	654.05	652.63	652.13	650.13



EXISTING PIER ELEVATION

EXISTING BEAM SEAT ELEVATIONS

	Pier 1	Pier 2	Pier 3
B1	652.78	653.83	652.75
B2	652.78	653.85	652.76
B3	652.86	653.91	652.83
B4	652.92	653.98	652.90
B5	653.00	654.04	652.97
B6	653.07	654.14	653.05
B7	653.07	654.14	653.05
B8	653.00	654.04	652.97
B9	652.95	653.98	652.90
B10	652.87	653.91	652.83
B11	652.81	653.85	652.76
B12	652.80	653.83	652.75



SECTION A-A

PIER REMOVAL DETAILS
STRUCTURE NO. 016-0275

Notes:

All existing vertical reinforcement in columns shall remain. Existing column reinforcement shall extend into cap a length of 2'-2".

Existing reinforcement incorporated into new construction shall be cleaned and straightened. Cost included with Concrete Removal. See Section 501 of the Standard Specifications.

Existing Horizontal bottom 7-#9 bars shall extend beyond exterior column face 4'-9".

Remove pier cap to face of exterior & interior columns. Saw cut remainder of cap at interior columns. Any damage caused by the Contractor shall be repaired at the Contractor's expense.

For exterior columns, saw cut & remove concrete to elevation shown at elevation "c". Retain existing vertical column bars & remove existing top 7-#9 bars. On the vertical face sawcut & remove 1'-3" horizontal of concrete on interior face as shown on Elevation view. Retain existing column reinforcement & horizontal 7-#9 bars.

Prior to removal of concrete, a 3/4" deep saw cut shall be made along all boundaries of removal areas to remain in place.

Concrete removal shall be according to Section 501 of the Std. Specs.

*Maintain 2-#5 bars each face for pier 2 and 1-#5 bar each face for piers 1 & 3. Extend #5 bars 2'-2" from face of exterior pier column.

LEGEND

= Concrete Removal

BILL OF MATERIAL

Item	Unit	Quantity
Concrete Removal	Cu Yd	50

BOWMAN, BARRETT & ASSOCIATES INC.
CONSULTING ENGINEERS
Chicago, Illinois
312.228.0100
www.bbainc.com
Job No. 910

SHEET NO. S-23 S-30 SHEETS	F.A.P. RTE. 0353	SECTION 0303.1B-1	COUNTY COOK	TOTAL SHEETS 91	SHEET NO. 68
	SN 016-0275		CONTRACT NO. 60C05		
FED. ROAD DIST. NO.		ILLINOIS FED. AID PROJECT			

5/16/2009 9:20:31 AM S:\WORK\CAD\IN\0303\016-0275-60C05-023-REM.dwg

DESIGNED - TAH
CHECKED - DF
DRAWN - LAM
CHECKED - TAH