

F.A. P. RTE.	SECTION	COUNTY	TOTAL SHEETS	SHEET NO.
348	2008-068-TS	COOK/WILL	18	1
		ILLINOIS	CONTRACT NO.	60F59

D-91-139-09

STATE OF ILLINOIS
DEPARTMENT OF TRANSPORTATION
DIVISION OF HIGHWAYS

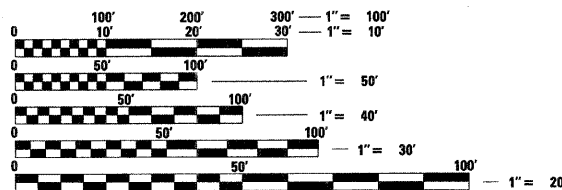
**PLANS FOR PROPOSED
FEDERAL AID HIGHWAY**
DISTRICT 1
CONGESTION MITIGATION AIR QUALITY
FIBER OPTIC COMMUNICATIONS NETWORK
IL ROUTE 43 (HARLEM AVE.) FROM
OAK PARK AVENUE TO ST. FRANCIS
F.A.P. ROUTE 348 / ILL 43 (HARLEM AVE.)
SECTION 2008-068 TS
PROJECT: CMF-0348(043)
COOK / WILL COUNTY

INDEX OF SHEETS

1. TITLE SHEET
2. SUMMARY OF QUANTITIES
- 3.- 6. DISTRICT ONE STANDARD TRAFFIC SIGNAL DESIGN DETAILS
7. TRAFFIC SIGNAL MODIFICATION PLAN IL 43 (HARLEM AVE.) AND ST. FRANCIS/COX AVE.
8. SCHEDULE OF QUANTITIES, CABLE PLAN AND PHASE DESIGNATION DIAGRAM IL 43 (HARLEM AVE.) AND ST. FRANCIS/COX AVE.
9. TRAFFIC SIGNAL MODIFICATION PLAN IL 43 (HARLEM AVE.) AND VOLLMER ROAD
10. SCHEDULE OF QUANTITIES, CABLE PLAN AND PHASE DESIGNATION DIAGRAM IL 43 (HARLEM AVE.) AND VOLLMER ROAD
11. TRAFFIC SIGNAL MODIFICATION PLAN IL 43 (HARLEM AVE.) AND BENTON DRIVE
12. SCHEDULE OF QUANTITIES, CABLE PLAN AND PHASE DESIGNATION DIAGRAM IL 43 (HARLEM AVE.) AND BENTON DRIVE
13. TRAFFIC SIGNAL MODIFICATION PLAN IL 43 (HARLEM AVE.) AND OAK PARK AVE.
14. SCHEDULE OF QUANTITIES, CABLE PLAN AND PHASE DESIGNATION DIAGRAM IL 43 (HARLEM AVE.) AND OAK PARK AVE.
- 15.-17. INTERCONNECT PLAN
18. INTERCONNECT SCHEMATIC

STANDARD DRAWINGS

- 000001-05 STANDARD SYMBOLS, ABBREVIATIONS AND PATTERNS
- 001006 DECIMAL OF AN INCH AND A FOOT
- 701101-02 OFF-RD OPERATIONS, MULTILANE, 4.5 m (15') TO 600 mm (24") FROM PAVEMENT EDGE
- 701606-06 URBAN LANE CLOSURE, MULTILANE 1W OR 2W MOUNTABLE MEDIAN
- 701701-06 URBAN LANE CLOSURE, MULTILANE INTERSECTION
- 701901-01 TRAFFIC CONTROL DEVICES
- 814001-02 HANDHOLES
- 862001-01 UNINTERRUPTABLE POWER SUPPLY (UPS)



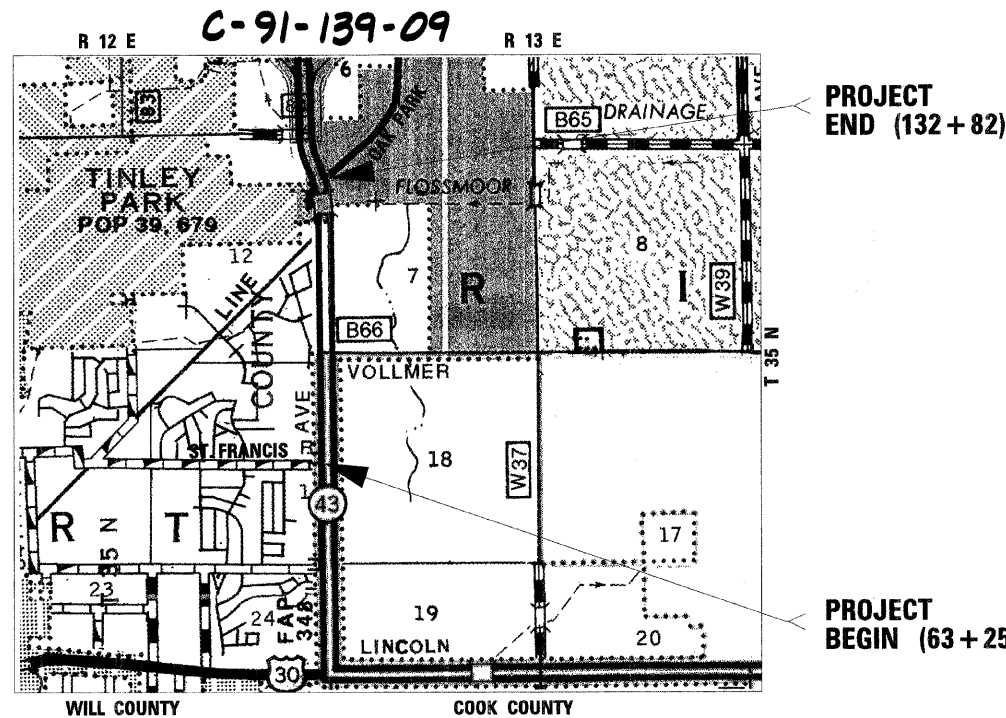
J.U.L.I.E.
JOINT UTILITY LOCATION INFORMATION FOR EXCAVATION
1-800-892-0123
OR 811

PREPARED BY: MICHAEL T. MATZKE, P.E.
QUIGG ENGINEERING, INC.
(217)245-5375



Michael T. Matzke
SIGNATURE
APRIL 30, 2009
DATE

J.I.C. EXP. DATE: 11-30-09



LOCATION OF SECTION INDICATED THUS: - ■ -

STATE OF ILLINOIS
DEPARTMENT OF TRANSPORTATION
DIVISION OF HIGHWAYS

SUBMITTED May 8, 2009
Deanna M. O'Keefe
DEPUTY DIRECTOR OF HIGHWAYS, REGION ENGINEER

June 26, 2009
Charles G. Ingersoll
ENGINEER OF DESIGN / AND ENVIRONMENT

June 26, 2009
Christine M. Reed
DIRECTOR OF HIGHWAYS, CHIEF ENGINEER

PRINTED BY THE AUTHORITY
OF THE STATE OF ILLINOIS



DISTRICT 1 - BUREAU OF TRAFFIC: STEVE TRAVIA/DARYLE DREW (847) 705-4420

CONTRACT NO. 60F59