

F.A. RTE.	SECTION	COUNTY	TOTAL SHEETS	SHEET NO.
VAR.	2009-041 I	*	26	3
STA.		TO STA.		
FED. ROAD DIST. NO.	ILLINOIS FED. AID PROJECT			

*COOK, DU PAGE, KANE, LAKE, MC HENRY AND WILL

SUMMARY OF QUANTITIES

CODE NO.	ITEM	UNIT	MAIN QUANTITY
X0323141	SUPPLEMENTAL SWEEPING	MILE	1430
X0329915	FULL EXPRESSWAY CLEANING CYCLE	EACH	12
X0330600	FULL ARTERIAL CLEANING CYCLE	EACH	3
X0414200	SIGN CLEANING CYCLE	EACH	1
X0326643	LITTER PICKING	MILE	2145

URBAN
100% STATE

EXPRESSWAY CLEANING SCHEDULE OF STARTING DATES - 2010

1st FULL CLEANING CYCLE	----	MARCH 1
2nd FULL CLEANING CYCLE	----	MAY 1
3rd FULL CLEANING CYCLE	----	MAY 20
4th FULL CLEANING CYCLE	----	JUNE 9
5th FULL CLEANING CYCLE	----	JUNE 28
6th FULL CLEANING CYCLE	----	JULY 17
7th FULL CLEANING CYCLE	----	AUGUST 5
8th FULL CLEANING CYCLE	----	AUGUST 25
9th FULL CLEANING CYCLE	----	SEPTEMBER 14
10th FULL CLEANING CYCLE	----	OCTOBER 3
11th FULL CLEANING CYCLE	----	OCTOBER 22
12th FULL CLEANING CYCLE	----	NOVEMBER 10

(RECOMMENDED TO BE COMPLETED ON OR BEFORE NOVEMBER 30)

EXPRESSWAY CLEANING SCHEDULE OF STARTING DATES - 2011

1st FULL CLEANING CYCLE	----	MARCH 1
2nd FULL CLEANING CYCLE	----	MAY 1
3rd FULL CLEANING CYCLE	----	MAY 20
4th FULL CLEANING CYCLE	----	JUNE 9
5th FULL CLEANING CYCLE	----	JUNE 28
6th FULL CLEANING CYCLE	----	JULY 17
7th FULL CLEANING CYCLE	----	AUGUST 5
8th FULL CLEANING CYCLE	----	AUGUST 25
9th FULL CLEANING CYCLE	----	SEPTEMBER 14
10th FULL CLEANING CYCLE	----	OCTOBER 3
11th FULL CLEANING CYCLE	----	OCTOBER 22
12th FULL CLEANING CYCLE	----	NOVEMBER 10

(RECOMMENDED TO BE COMPLETED ON OR BEFORE NOVEMBER 30)

ARTERIAL CLEANING SCHEDULE OF ANTICIPATED STARTING DATES - 2010

INITIAL CLEANING CYCLE	----	MARCH 1
1st FULL CLEANING CYCLE	----	JUNE 25
2nd FULL CLEANING CYCLE	----	SEPTEMBER 12 (RECOMMENDED TO BE COMPLETED ON OR BEFORE NOVEMBER 30)

ARTERIAL CLEANING SCHEDULE OF ANTICIPATED STARTING DATES - 2011

INITIAL CLEANING CYCLE	----	MARCH 1
1st FULL CLEANING CYCLE	----	JUNE 25
2nd FULL CLEANING CYCLE	----	SEPTEMBER 12 (RECOMMENDED TO BE COMPLETED ON OR BEFORE NOVEMBER 30)

SIGN CLEANING CYCLES SCHEDULE OF STARTING DATES - 2010

SIGN CLEANING CYCLE	----	MARCH 1
---------------------	------	---------

SIGN CLEANING CYCLES SCHEDULE OF STARTING DATES - 2011

SIGN CLEANING CYCLE	----	MARCH 1
---------------------	------	---------

NOTES:

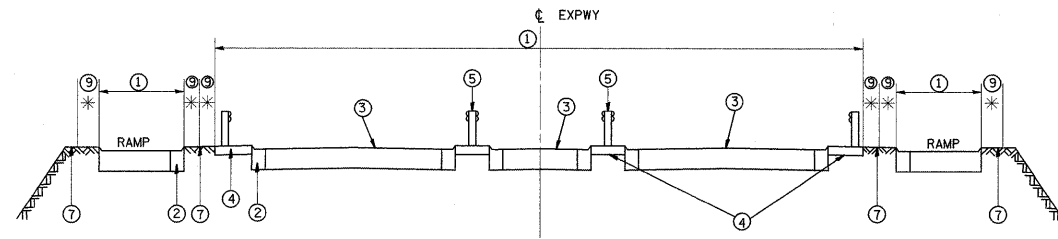
- SCHEDULE MAY VARY AS DIRECTED BY THE ENGINEER.
- THE CONTRACTOR MAY NOT START CLEANING CYCLES BEFORE THE DATES SCHEDULED IN THE PLANS WITHOUT WRITTEN AUTHORIZATION FROM THE ENGINEER.
- NO WORK WILL BE ALLOWED DURING ANY LEGAL HOLIDAY PERIOD.
- ALL SCHEDULES OF ANTICIPATED STARTING DATES SHOWN ARE TENTATIVE AS DETERMINE BY THE DEPARTMENT'S OPERATIONAL NEEDS.

REVISIONS		ILLINOIS DEPARTMENT OF TRANSPORTATION
NAME	DATE	
		SUMMARY OF QUANTITIES AND SCHEDULE OF STARTING DATES

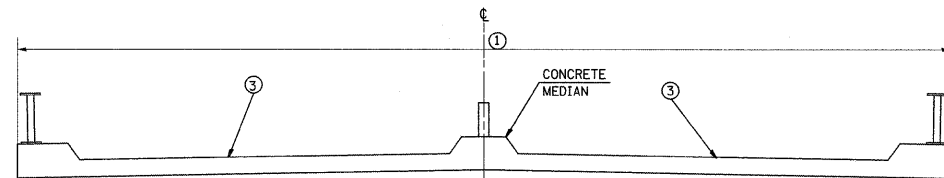
SCALE: VERT. DATE HORIZ. DATE DRAWN BY CHECKED BY

F.A. RTE.	SECTION	COUNTY	TOTAL SHEETS	SHEET NO.
VAR.	2009-041 I	*	26	4
STA.	TO STA.			
FED. ROAD DIST. NO.	ILLINOIS	FED. AID PROJECT		

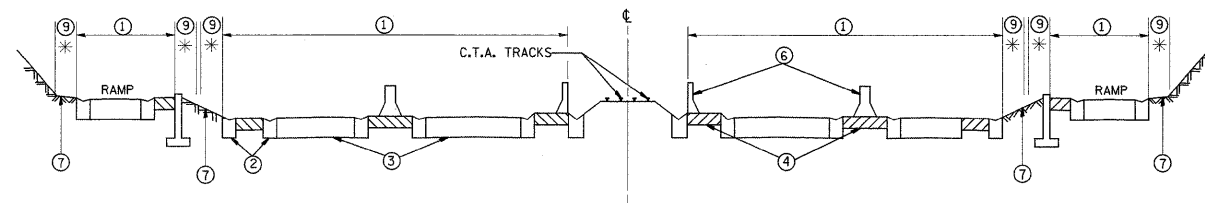
*COOK, DU PAGE, KANE, LAKE, MC HENRY AND WILL



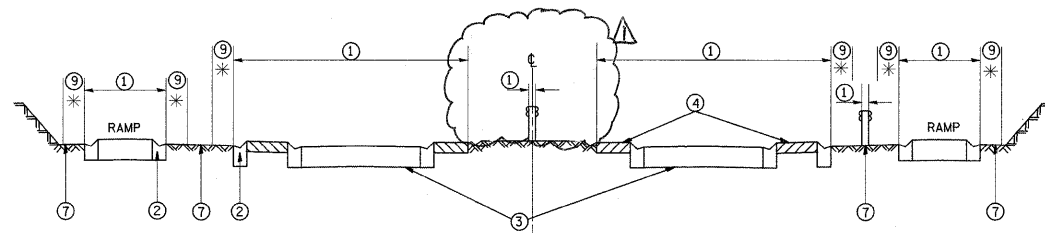
TYPICAL EXPRESSWAY CROSS-SECTION NO. 1



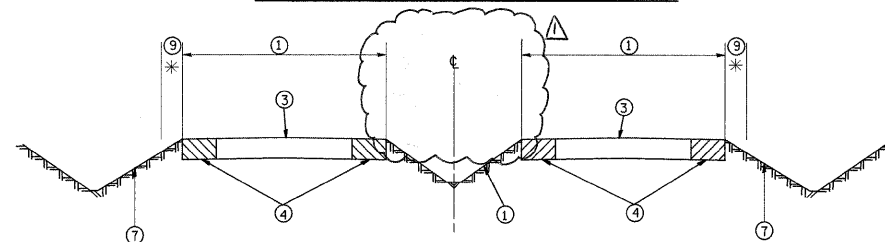
TYPICAL CROSS-SECTION OF ELEVATED ROADWAY
TYPICAL EXPRESSWAY CROSS-SECTION NO. 2



TYPICAL EXPRESSWAY CROSS-SECTION NO. 3



TYPICAL EXPRESSWAY CROSS-SECTION NO. 4



TYPICAL EXPRESSWAY CROSS-SECTION NO. 5

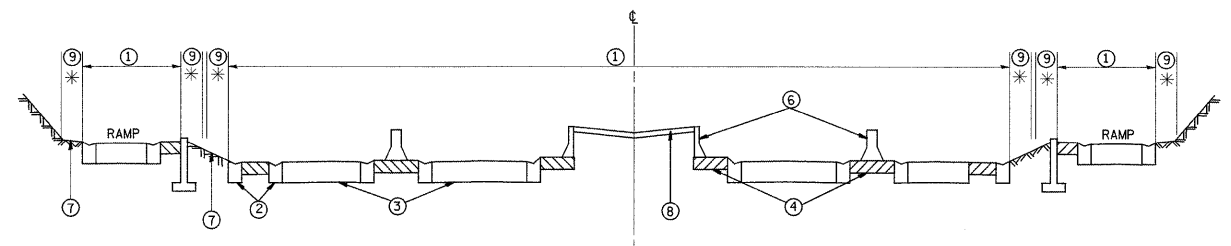
LEGEND

- ① AREA OF ROADWAY CLEANING AND RUBBISH REMOVAL
- ② CURB AND GUTTER
- ③ TRAVELED ROADWAY
- ④ STABILIZED SHOULDER OR MEDIAN
- ⑤ STEEL PLATE GUARD RAIL
- ⑥ CONCRETE BARRIER
- ⑦ NON STABILIZED SURFACE
- ⑧ RAISED CONCRETE MEDIAN
- ⑨ LITTER PICKING

NOTE: SLOPE WALLS UNDER BRIDGES ARE NOT INCLUDED IN AREAS TO BE CLEANED. DEBRIS SHALL BE REMOVED FROM ALL STABILIZED AREAS AND UNDER ALL GUARDRAIL.

LEGEND

*: 10' (TYP.)



TYPICAL EXPRESSWAY CROSS-SECTION NO. 6

REVISIONS	
NAME	DATE

ILLINOIS DEPARTMENT OF TRANSPORTATION

TYPICAL EXPRESSWAY CROSS-SECTIONS

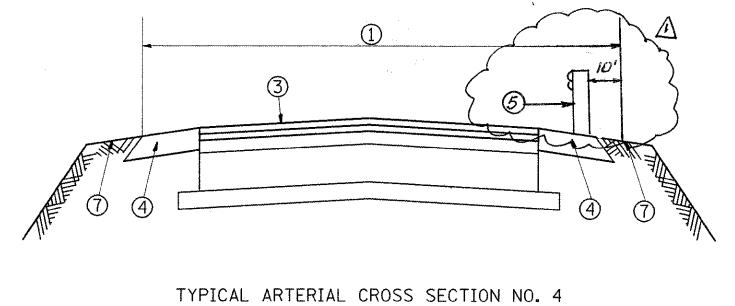
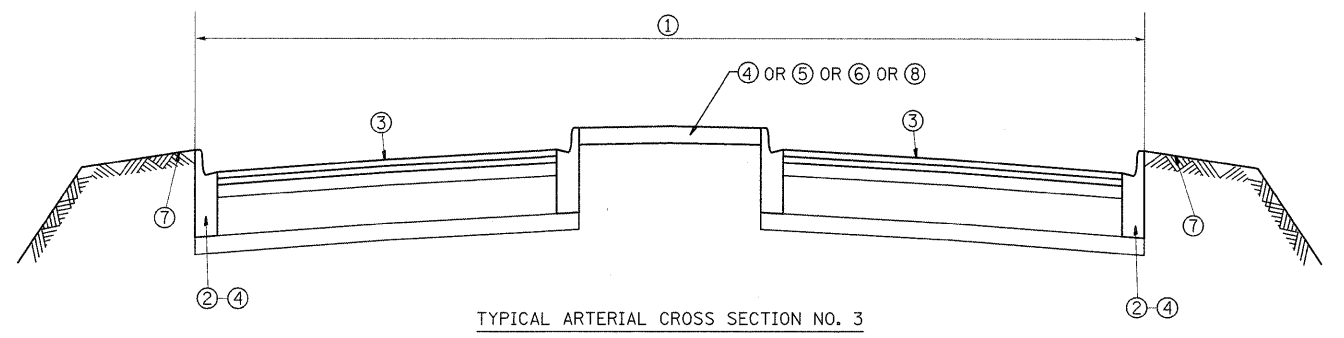
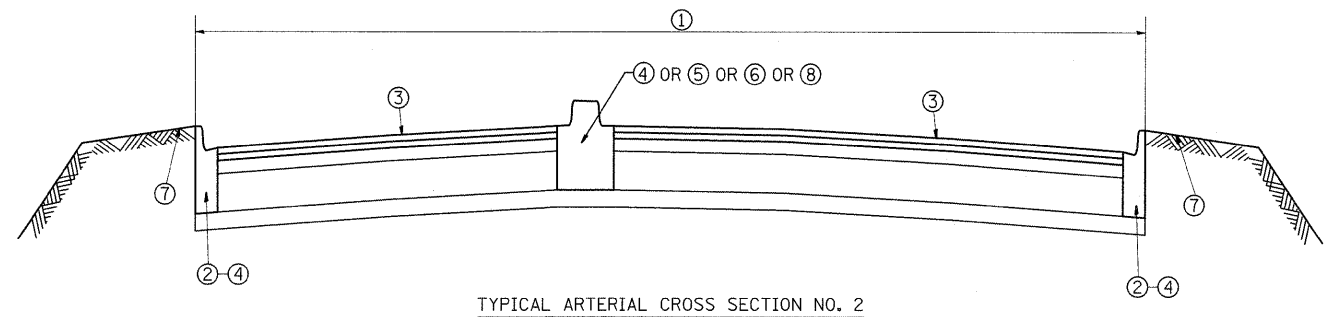
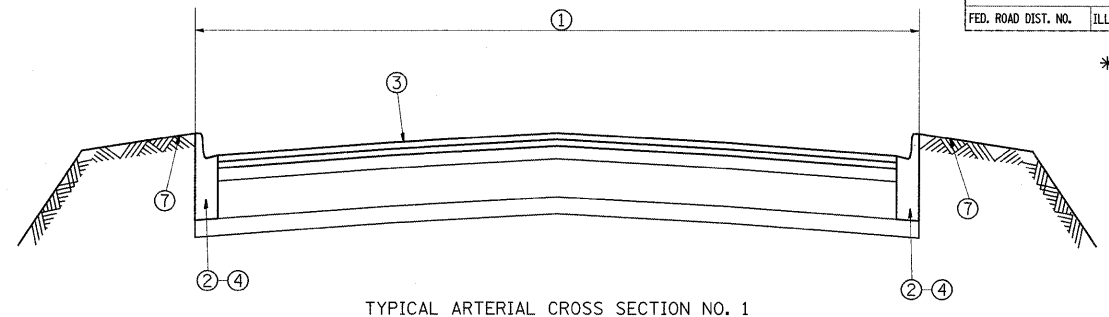
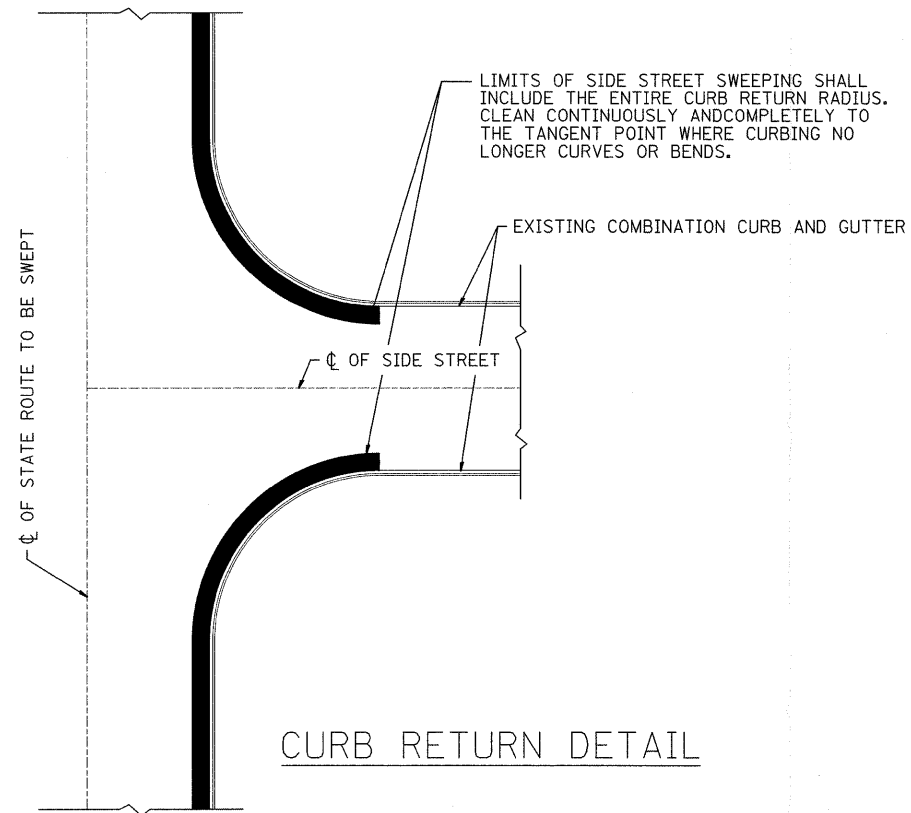
SCALE: VERT. DATE
HORIZ.

DRAWN BY
CHECKED BY

Rev. 7-21-09

F.A. RTE.	SECTION	COUNTY	TOTAL SHEETS	SHEET NO.
VAR.	2009-041 I	*	26	5
STA.	TO STA.			
FED. ROAD DIST. NO.	ILLINOIS	FED. AID PROJECT		

*COOK, DU PAGE, KANE, LAKE, MC HENRY AND WILL



- LEGEND**
- ① AREA OF ROADWAY CLEANING AND RUBBISH REMOVAL
 - ② CURB AND GUTTER
 - ③ TRAVELED ROADWAY
 - ④ STABILIZED SHOULDER OR MEDIAN
 - ⑤ STEEL PLATE GUARDRAIL
 - ⑥ CONCRETE BARRIER
 - ⑦ NON STABILIZED AREA
 - ⑧ RAISED CONCRETE MEDIAN

NOTE:
SLOPE WALLS UNDER BRIDGES ARE NOT INCLUDED IN AREAS TO BE CLEANED.

REVISIONS	
NAME	DATE

ILLINOIS DEPARTMENT OF TRANSPORTATION
EXPRESSWAY AND ARTERIAL HIGHWAY
CLEANING (SWEEPING)

**TYPICAL
ARTERIAL CROSS SECTIONS
AND CURB RETURN DETAIL**

SCALE: VERT. _____
HORIZ. _____

DATE _____ DRAWN BY _____
CHECKED BY _____

Rev. 7-21-09

PLOT DATE = 5/21/2009
FILE NAME = c:\p\work\p\1001\MD\JA\d8136181\SweepingContract2889.dgn
PLOT SCALE = 02.412 / IN.
USER NAME = mcdjjs