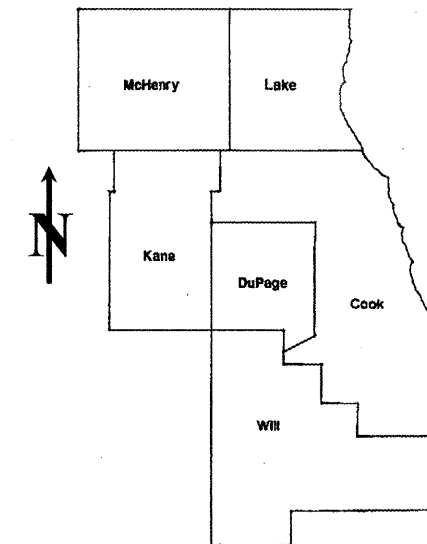


ROUTE	SECTION	COUNTY	TOTAL SHEETS	SHEET NUMBER
VARIOUS	2009-057PCC-PP	LAKE & MCHENRY	23	1

**STATE OF ILLINOIS**  
**DEPARTMENT OF TRANSPORTATION**  
**DIVISION OF HIGHWAYS**  
**DISTRICT ONE**  
**PROPOSED HIGHWAY PLANS**

**CONTRACT NO. 60H48**

D-91-731-09



LOCATION OF IMPROVEMENT INDICATED THUS:

FOR INDEX OF SHEETS SEE SHEET 2

VARIOUS ROUTES  
 SECTION: 2009-057PCC-PP  
 VARIOUS LOCATIONS IN LAKE & MCHENRY COUNTIES  
 P.C.C. PAVEMENT PATCHING  
 LAKE & MCHENRY COUNTIES  
 C-91-731-09

**CONTRACT NO. 60H48**

**STATE OF ILLINOIS**  
**DEPARTMENT OF TRANSPORTATION**  
**DIVISION OF HIGHWAYS**  
 SUBMITTED:   MAY 18,   20  09    
*Diane M. O'Keefe* *DE*  
 DEPUTY DIRECTOR OF HIGHWAYS, REGION ENGINEER  
  June 26,   20  09    
*Charles J. Ingersoll* *DE*  
 ENGINEER OF DESIGN AND ENVIRONMENT  
  June 26,   20  09    
*Christine M. Reed* *DE*  
 DIRECTOR, DIVISION OF HIGHWAYS

**PRINTED BY THE AUTHORITY**  
**OF THE STATE OF ILLINOIS**

**J.U.L.I.E.: JOINT UTILITY LOCATION**  
**INFORMATION FOR EXCAVATION**  
**(312) 744-7000**

DISTRICT ONE - DESIGN - PLAN PREPARATION ENGINEER:  
 KEN ENG / (847) 705-4247

INDEX OF SHEETS

<u>SHEET NO.</u>	<u>DESCRIPTION</u>
1	TITLE SHEET
2	INDEX OF SHEETS, STATE STANDARDS AND GENERAL NOTES
3	SUMMARY OF QUANTITIES
4	GENERAL LOCATION MAP
5	SUMMARY OF PATCHING SCHEDULE
6-17	PATCHING SCHEDULE
18	TRAFFIC CONTROL AND PROTECTION FOR SIDE ROADS, INTERSECTIONS AND DRIVEWAYS
19	TYPICAL APPLICATIONS: RAISED REFLECTIVE PAVEMENT MARKERS (SNOW-PLOW RESISTANT)
20	DISTRICT ONE TYPICAL PAVEMENT MARKINGS
21	TRAFFIC CONTROL AND PROTECTION OF TURN BAYS (TO REMAIN OPEN TO TRAFFIC)
22	ARTERIAL ROAD INFORMATION SIGN
23	STANDARD TRAFFIC SIGNAL DESIGN DETAILS

STATE STANDARDS

<u>STANDARD NO.</u>	<u>DESCRIPTION</u>
000001-05	TYPICAL SYMBOLS, ABBREVIATIONS AND PATTERNS
442101-07	CLASS B PATCHES
701421-02	LANE CLOSURE, MULTILANE, DAY OPERATIONS ONLY
701422-02	LANE CLOSURE, MULTILANE
701426-03	LANE CLOSURE, MULTILANE, INTERMITTENT OR MOVING OPERATIONS
701601-06	URBAN LANE CLOSURE, MULTILANE, 1W OR 2W WITH NONTRAVERSABLE MEDIAN
701602-04	URBAN LANE CLOSURE, MULTILANE, 2W WITH BIDIRECTIONAL LEFT TURN LANE
701606-00	URBAN LANE CLOSURE, MULTILANE, 2W WITH MOUNTABLE MEDIAN
701701-06	URBAN LANE CLOSURE, MULTILANE INTERSECTION
701901-01	TRAFFIC CONTROL DEVICES

GENERAL NOTES

BEFORE STARTING ANY EXCAVATION, THE CONTRACTOR SHALL CALL "JULIE" AT (800) 892-0123 OR 811 FOR FIELD LOCATIONS OF BURIED ELECTRIC, TELEPHONE AND GAS FACILITIES. (48 HOUR NOTIFICATION REQUIRED)

THE CONTRACTOR WILL NOT BE ALLOWED TO SET UP A YARD OR FIELD OFFICE ON STATE (OR TOLLWAY) PROPERTY WITHOUT WRITTEN PERMISSION FROM THE DEPARTMENT (OR ISTHA)

WHEN ARTIFICIAL LIGHTING IS UTILIZED IN NIGHT OPERATIONS, THE CONTRACTOR SHALL EXERCISE THE UTMOST PRECAUTIONS IN PREVENTING ADVERSE VISIBILITY TO THE MOTORING PUBLIC AND ADJOINING RESIDENTIAL AREAS.

BEFORE BEGINNING ANY WORK, THE CONTRACTOR SHALL RETAIN AND RECORD FOR FUTURE REFERENCE, ALL EXISTING PAVEMENT MARKING LINES (AND RAISED REFLECTIVE PAVEMENT MARKERS) IN ORDER THAT THESE LOCATIONS CAN BE RE-ESTABLISHED FOR STRIPING. EXACT LOCATIONS OF ALL PAVEMENT MARKINGS SHALL BE AS DIRECTED BY THE ENGINEER.

ALL PAVEMENT PATCHING LOCATIONS WILL BE DETERMINED IN THE FIELD BY THE ENGINEER.

THE CONTRACTOR SHALL CONTACT THE DISTRICT ONE TRAFFIC CONTROL SUPERVISOR AT (847) 705-4470 A MINIMUM OF 72 HOURS IN ADVANCE OF BEGINNING WORK.

THE ENGINEER SHALL CONTACT MS. DEBBIE HANLON, AREA TRAFFIC FIELD ENGINEER AT (847) 438-2300 MINIMUM OF TWO (2) WEEKS PRIOR TO PLACEMENT OF PERMANENT PAVEMENT MARKINGS.

DOUBLE LANE MARKERS ARE TO BE USED AS SHOWN ON THE DISTRICT ONE DETAIL "TYPICAL APPLICATIONS - RAISED REFLECTIVE PAVEMENT MARKERS (SNOW-PLOW RESISTANT)" SHOWN IN THE PLANS.

THE EXISTING ROADWAY TYPICAL SECTION IS ASSUMED TO BE 10 INCHES OF PORTLAND CEMENT CONCRETE (PCC) PAVEMENT.

NO PATCHING IS TO BE DONE WITH IN 50 FEET OF ANY RAILROAD.

THE COST OF TRAFFIC CONTROL AND PROTECTION FOR THE PROJECT SHALL BE INCLUDED IN THE COST OF THE ASSOCIATED ROAD WORK.

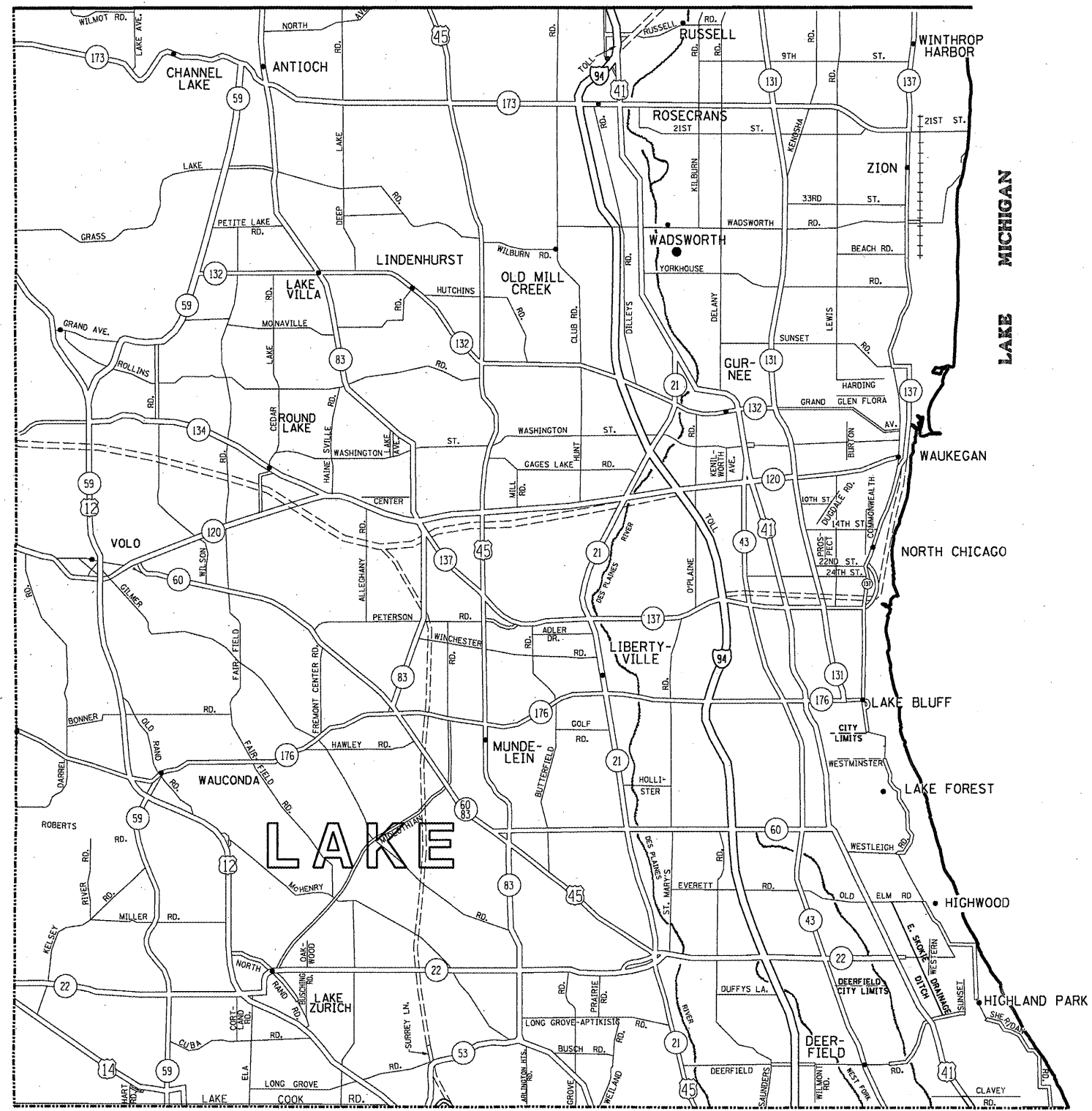
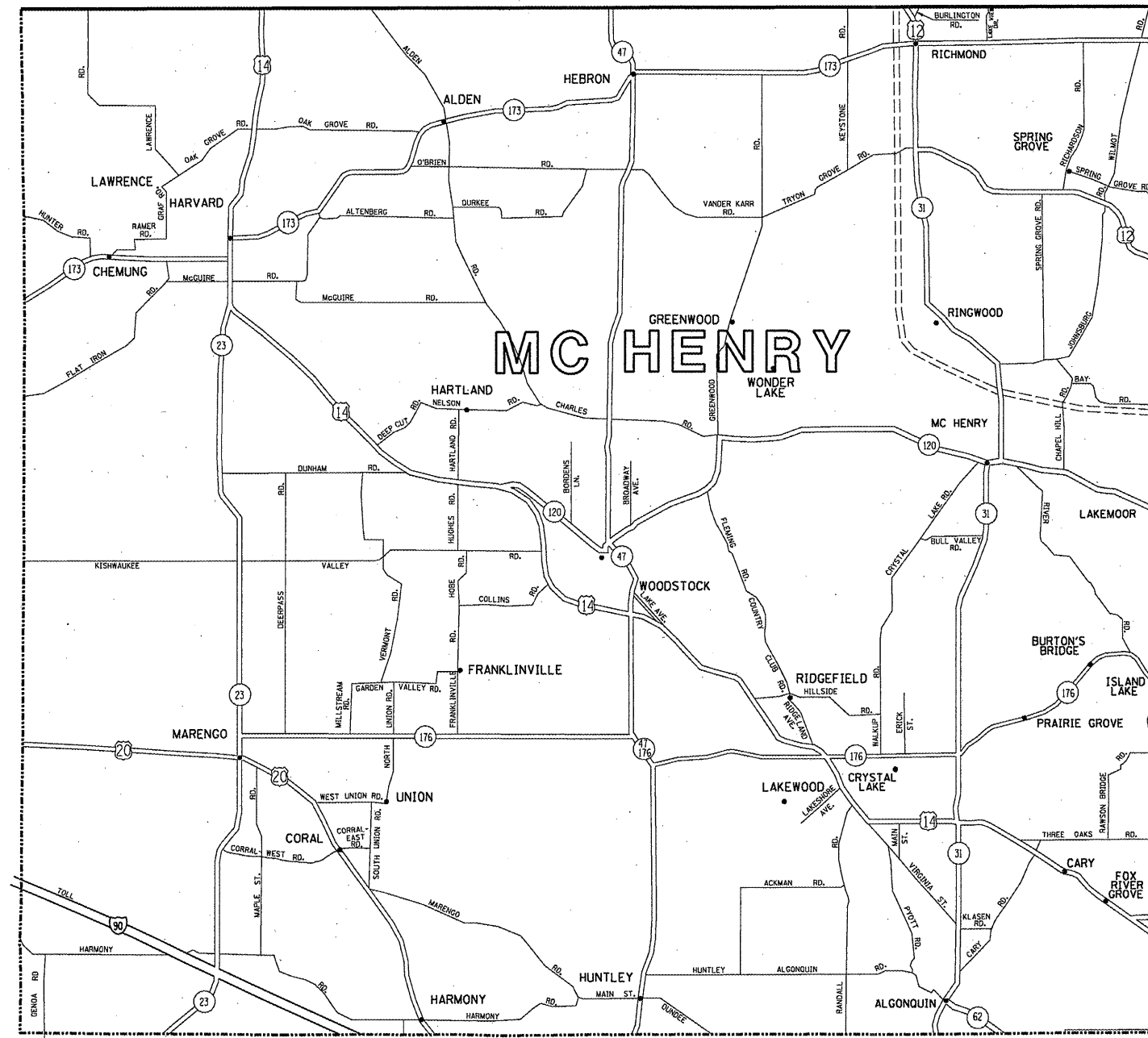
FILE NAME =	USER NAME = wilgreendp	DESIGNED -	REVISED -	<b>STATE OF ILLINOIS DEPARTMENT OF TRANSPORTATION</b>	<b>INDEX OF SHEETS, STATE STANDARDS AND GENERAL NOTES</b>	F.A. RTE.	SECTION	COUNTY	TOTAL SHEETS	SHEET NO.
ca:\pwork\PWIDOT\WILGREENDP\08125047\design.dgn	DESIGNED -	REVISED -	VAR.			2009-057PCC-PP	LK. & MCH.	23	2	
PLOT SCALE = 100.0000' / IN.	CHECKED -	REVISED -	<b>CONTRACT NO. 60H48</b>							
PLOT DATE = 5/18/2009	DATE -	REVISED -	FED. ROAD DIST. NO. 1   ILLINOIS   FED. AID PROJECT							
SCALE:					SHEET NO. OF SHEETS	STA.	TO STA.			

URBAN  
100%  
STATE

SUMMARY OF QUANTITIES			CONSTRUCTION TYPE CODE						SUMMARY OF QUANTITIES			CONSTRUCTION TYPE CODE							
CODE NO	ITEM	UNIT	TOTAL QUANTITIES	LAKE COUNTY 1000	MCHENRY COUNTY 1000					CODE NO	ITEM	UNIT	TOTAL QUANTITIES						
42101300	PROTECTIVE COAT	SO YD	8690	6785	1905														
44001700	COMBINATION CONCRETE CURB AND GUTTER REMOVAL AND REPLACEMENT	FOOT	200	150	50														
44200970	CLASS B PATCHES, TYPE II, 10 INCH	SO YD	6444	5131	1313														
44200974	CLASS B PATCHES, TYPE III, 10 INCH	SO YD	2200	1620	580														
44213200	SAW CUTS	FOOT	36726	28128	8598														
60300305	FRAMES AND LIDS TO BE ADJUSTED	EACH	10	5	5														
67000400	ENGINEER'S FIELD OFFICE, TYPE A	CAL MO	6	4	2														
67100100	MOBILIZATION	L SUM	1	0.5	0.5														
70103815	TRAFFIC CONTROL SURVEILLANCE	CAL DA	20	16	4														
*78008200	POLYUREA PAVEMENT MARKING TYPE I - LETTERS AND SYMBOLS	SO FT	275	200	75														
*78008210	POLYUREA PAVEMENT MARKING TYPE I - LINE 4"	FOOT	12966	10128	2838														
*78008230	POLYUREA PAVEMENT MARKING TYPE I - LINE 6"	FOOT	500	400	100														
*78008270	POLYUREA PAVEMENT MARKING TYPE I - LINE 24"	FOOT	150	100	50														
*78100100	RAISED REFLECTIVE PAVEMENT MARKER	EACH	163	127	36														
*88600600	DETECTOR LOOP REPLACEMENT	FOOT	175	125	50														
X0322256	TEMPORARY INFORMATION SIGNING	SO FT	514	411.2	102.8														
Z0017202	DOWEL BARS 1 1/2"	EACH	21695	16690	5005														
Z0075330	TIE BARS 1 1/4"	EACH	10890	8250	2640														

\* SPECIALTY ITEM

FILE NAME =	USER NAME = wlgrendp	DESIGNED -	REVISED -	<b>STATE OF ILLINOIS DEPARTMENT OF TRANSPORTATION</b>	<b>SUMMARY OF QUANTITIES</b>	F.A. RTE.	SECTION	COUNTY	TOTAL SHEETS	SHEET NO.	
c:\pw\work\PIWIDOT\WILGREENDP\0125047\Designdgn		DRAWN -	REVISED -			VAR.	2009-057PCC-PP	LK. & MCH.	23	3	
PLOT SCALE = 100,000' / 1" IN.		CHECKED -	REVISED -			<b>CONTRACT NO. 60H48</b>					
PLOT DATE = 5/18/2009		DATE -	REVISED -			SCALE:	SHEET NO.	OF	SHEETS	STA.	TO STA.



FILE NAME =	USER NAME = wlgreendp	DESIGNED -	REVISED -	<b>STATE OF ILLINOIS DEPARTMENT OF TRANSPORTATION</b>	<b>GENERAL LOCATION MAP - LAKE AND MCHENRY COUNTIES</b>	F.A. RTE.	SECTION	COUNTY	TOTAL SHEETS	SHEET NO.	
o:\pwwork\p1\DOT\WILGREEN\p1\0125047	design.dgn	DRAWN -	REVISED -			VAR.	2009-057PCC-PP	L.K. & MCH.	23	4	
		CHECKED -	REVISED -			SCALE:		CONTRACT NO. 60H48			
		DATE -	REVISED -			SHEET NO. OF SHEETS STA. TO STA.	FED. ROAD DIST. NO. 1 (ILLINOIS) FED. AID PROJECT				

<b>PCC PATCHING SUMMARY - LAKE AND MCHENRY COUNTIES</b>	<b>CLASS B PATCHES, 10" TYPE II (SY)</b>	<b>CLASS B PATCHES, 10" TYPE III (SY)</b>
IL 21 (LAKE COOK RD. TO CHEVY CHASE RD.)	96	220
IL 22 (HIGHMOOR RD. TO US 41)	344	280
IL 43 (440' NORTH AND SOUTH OF IL 22)	1848	
IL 60 (US 41 TO FIELD COURT DR.)	336	420
IL 83 AT IL 22 INTERSECTION	152	
IL 83 AT IL 53 INTERSECTION & CONTINUING ON IL 53 FOR 1/2 MILE	48	60
IL 131 (IL 132 TO SUNSET AVE.)	1968	600
US 14 (IL 22 TO 1/2 MILE EAST OF IL 22)	339	40
IL 120 (FOX RIVER TO US 12)	241	300
US 14 (SANDS RD. TO IL 22)	1072	280

**SUMMARY TOTALS:        6444        2200**  
**(SY)                                  (SY)**

FILE NAME =	USER NAME = wlgreendp	DESIGNED -	REVISED -
c:\pwork\pwork\WILGREENDP\2125047\Design.dgn		DRAWN -	REVISED -
PLOT SCALE = 100.0000 / IN.		CHECKED -	REVISED -
PLOT DATE = 5/18/2009		DATE -	REVISED -

**STATE OF ILLINOIS  
DEPARTMENT OF TRANSPORTATION**

**SUMMARY OF PATCHING SCHEDULE  
LAKE AND MCHENRY COUNTIES**

F.A. RTE.	SECTION	COUNTY	TOTAL SHEETS	SHEET NO.
VAR.	2009-057PCC-PP	LK. & MCH.	23	5
<b>CONTRACT NO. 60H48</b>				
<small>FED. ROAD DIST. NO. 1   ILLINOIS FED. AID PROJECT</small>				

SCALE:      SHEET NO.    OF    SHEETS    STA.                    TO STA.

ROUTE: IL 21 from Lake Cook Rd. to Chevy Chase Rd.

CROSS STREETS		DIRECTION (EB/WB) (NB/SB)	LANE NO. (1, 2, 3)	PAVEMENT PATCH WIDTH	PAVEMENT PATCH LENGTH	REPAIR AREA (SQ FT)	REPAIR AREA (SQ YD)
FROM	TO						
Lake Cook Rd.	Chevy Chase Rd.	NB	1	12	6	72	8
		NB	2	12	6	72	8
		NB	3	12	6	72	8
		NB	3	12	6	72	8
		NB	3	12	6	72	8
		SB	Lt. Turn	12	15	180	20
		SB	Lt. Turn	12	15	180	20
		SB	1	12	6	72	8
		SB	1	12	6	72	8
		SB	1	12	6	72	8
		SB	1	12	6	72	8
		SB	1	12	15	180	20
		SB	2	12	15	180	20
		SB	2	12	15	180	20
		SB	2	12	15	180	20
		SB	3	12	6	72	8
		SB	3	12	6	72	8
		SB	3	12	6	72	8
		SB	3	12	15	180	20
		SB	3	12	15	180	20
		SB	3	12	15	180	20
		SB	3	12	15	180	20
		SB	3	12	15	180	20
		SB	3	12	15	180	20
		SB	Rt. Turn	12	15	180	20

TOTALS:

237  
FT

316  
SY

FILE NAME =	USER NAME = wjgreendp	DESIGNED -	REVISED -
c:\pwork\PWIDOT\WILGREENDP\d0125047\	design.dgn	DRAWN -	REVISED -
	PLOT SCALE = 100.0000' / IN.	CHECKED -	REVISED -
	PLOT DATE = 5/18/2009	DATE -	REVISED -

**STATE OF ILLINOIS  
DEPARTMENT OF TRANSPORTATION**

**PATCHING SCHEDULE  
IL 21**

SCALE: SHEET NO. OF SHEETS STA. TO STA.

F.A. RTE.	SECTION	COUNTY	TOTAL SHEETS	SHEET NO.
VAR.	2009-057PCC-PP	LK. & MCH.	23	6
<b>CONTRACT NO. 60H48</b>				
FED. ROAD DIST. NO. 1   ILLINOIS FED. AID PROJECT				

ROUTE: IL 22 from Highmoor Rd. to US 41

CROSS STREETS		DIRECTION (EB/WB) (NB/SB)	LANE NO. (1, 2, 3)	PAVEMENT PATCH WIDTH	PAVEMENT PATCH LENGTH	REPAIR AREA (SQ FT)	REPAIR AREA (SQ YD)
FROM	TO						
Highmoor Rd.	US 41	EB	1	12	6	72	8
		EB	1	12	6	72	8
		EB	1	12	6	72	8
		EB	1	12	6	72	8
		EB	1	12	6	72	8
		EB	1	12	6	72	8
		EB	1	12	6	72	8
		EB	1	12	15	180	20
		EB	1	12	15	180	20
		EB	1	12	15	180	20
		EB	1	12	15	180	20
		EB	1	12	15	180	20
		EB	1	12	15	180	20
		EB	1	12	15	180	20
		EB	2	12	6	72	8
		EB	2	12	6	72	8
		EB	2	12	6	72	8
		EB	2	12	6	72	8
		EB	2	12	6	72	8
		EB	2	12	6	72	8
		EB	2	12	15	180	20
		EB	2	12	15	180	20
		EB	2	12	15	180	20
		EB	2	12	15	180	20
		EB	2	12	15	180	20
		EB	2	12	15	180	20
		EB	2	12	15	180	20
		EB	Turn	12	6	72	8
		EB	Turn	12	6	72	8
		EB	Turn	12	6	72	8
		EB	Turn	12	6	72	8
		EB	Turn	12	6	72	8
		EB	Turn	12	6	72	8
Highmoor Rd.	US 41	WB	1	12	6	72	8
		WB	1	12	6	72	8
		WB	1	12	6	72	8
		WB	1	12	6	72	8
		WB	1	12	6	72	8
		WB	1	12	6	72	8
		WB	1	12	6	72	8
		WB	1	12	6	72	8
		WB	1	12	6	72	8
		WB	1	12	6	72	8
		WB	1	12	6	72	8
		WB	1	12	6	72	8
		WB	2	12	6	72	8
		WB	2	12	6	72	8
		WB	2	12	6	72	8
		WB	2	12	6	72	8
		WB	2	12	6	72	8
		WB	2	12	6	72	8
		WB	2	12	6	72	8
		WB	2	12	6	72	8
		WB	2	12	6	72	8
		WB	2	12	6	72	8
		WB	2	12	6	72	8
		WB	2	12	6	72	8
		WB	2	12	6	72	8

TOTALS: 468 FT 624 SY

FILE NAME =	USER NAME = wlgreendp	DESIGNED -	REVISED -	<b>STATE OF ILLINOIS</b> <b>DEPARTMENT OF TRANSPORTATION</b>	<b>PATCHING SCHEDULE</b> <b>IL 22</b>		F.A. RTE.	SECTION	COUNTY	TOTAL SHEETS	SHEET NO.
c:\prk_work\FWIDOT\WILGREENDP\d0125047\Design.dgn	DRAWN -	REVISED -	VAR.				2009-057PCC-PP	L.K. & MCH.	23	7	
PLOT SCALE = 1/8"=1'-0"	CHECKED -	REVISED -	CONTRACT NO. 60H48								
PLOT DATE = 5/18/2009	DATE -	REVISED -	SCALE:		SHEET NO. OF SHEETS	STA. TO STA.	FED. ROAD DIST. NO. 1   ILLINOIS FED. AID PROJECT				

Design.dgn 5/18/2009 4:11:20 PM User=wlgreendp







ROUTE: IL 60 from US 41 to Field Court Dr.

CROSS STREETS		DIRECTION (EB/WB) (NB/SB)	LANE NO. (1, 2, 3)	PAVEMENT PATCH WIDTH	PAVEMENT PATCH LENGTH	REPAIR AREA (SQ FT)	REPAIR AREA (SQ YD)		
FROM	TO								
US 41	Field Court Dr.	EB	1	12	6	72	8		
		EB	1	12	6	72	8		
		EB	1	12	6	72	8		
		EB	1	12	6	72	8		
		EB	1	12	15	180	20		
		EB	1	12	15	180	20		
		EB	1	12	15	180	20		
		EB	1	12	15	180	20		
US 41	Field Court Dr.	EB	2	12	6	72	8		
		EB	2	12	6	72	8		
		EB	2	12	6	72	8		
		EB	2	12	6	72	8		
		EB	2	12	15	180	20		
		EB	2	12	15	180	20		
		EB	2	12	15	180	20		
		EB	2	12	15	180	20		
		EB	2	12	6	72	8		
		EB	2	12	6	72	8		
		EB	2	12	15	180	20		
		EB	Turn	12	6	72	8		
		EB	Turn	12	15	180	20		
		EB	Turn	12	15	180	20		
US 41	Field Court Dr.	WB	1	12	6	72	8		
		WB	1	12	6	72	8		
		WB	1	12	6	72	8		
		WB	1	12	6	72	8		
		WB	1	12	6	72	8		
		WB	1	12	6	72	8		
		WB	1	12	6	72	8		
		WB	1	12	6	72	8		
		WB	1	12	6	72	8		
		WB	1	12	6	72	8		
		WB	1	12	6	72	8		
		WB	1	12	6	72	8		
		WB	1	12	6	72	8		
		WB	1	12	6	72	8		
		WB	1	12	6	72	8		
		WB	1	12	6	72	8		
		WB	1	12	15	180	20		
		US 41	Field Court Dr.	WB	2	12	6	72	8
				WB	2	12	6	72	8
				WB	2	12	6	72	8
WB	2			12	6	72	8		
WB	2			12	6	72	8		
WB	2			12	6	72	8		
WB	2			12	6	72	8		
WB	2			12	6	72	8		
WB	2			12	6	72	8		
WB	2			12	6	72	8		
WB	2			12	6	72	8		
WB	Turn			12	6	72	8		
WB	Turn			12	6	72	8		
WB	Turn			12	15	180	20		

TOTALS: 567 FT 756 SY

FILE NAME =	USER NAME = wilgreendp	DESIGNED -	REVISED -	<b>STATE OF ILLINOIS DEPARTMENT OF TRANSPORTATION</b>	<b>PATCHING SCHEDULE IL 60</b>				F.A. RTE.	SECTION	COUNTY	TOTAL SHEETS	SHEET NO.		
ct:\prk_work\PWIDOT\WILGREENDP\d0125047\Design.dgn		DRAWN -	REVISED -		SCALE:	SHEET NO.	OF	SHEETS	STA.	TO STA.	VAR.	2009-057PCC-PP	LK. & MCH.	23	10
		CHECKED -	REVISED -		CONTRACT NO. 60H48										
		DATE -	REVISED -		FED. ROAD DIST. NO. 1   ILLINOIS FED. AID PROJECT										

ROUTE: IL 83 at IL 22 Intersection

CROSS STREETS		DIRECTION (EB/WB) (NB/SB)	LANE NO. (1, 2, 3)	PAVEMENT PATCH WIDTH	PAVEMENT PATCH LENGTH	REPAIR AREA (SQ FT)	REPAIR AREA (SQ YD)
FROM	TO						
IL 83		NB	1	12	6	72	8
		NB	1	12	6	72	8
		NB	2	12	6	72	8
		NB	2	12	6	72	8
		NB	Turn	12	6	72	8
		SB	1	12	6	72	8
		SB	1	12	6	72	8
		SB	2	12	6	72	8
		SB	2	12	6	72	8
		SB	Turn	12	6	72	8
IL 22		EB	1	12	6	72	8
		EB	1	12	6	72	8
		EB	2	12	6	72	8
		EB	2	12	6	72	8
		EB	Turn	12	6	72	8
		WB	1	12	6	72	8
		WB	1	12	6	72	8
		WB	2	12	6	72	8
	WB	2	12	6	72	8	

TOTALS: 114 FT 152 SY

ROUTE: IL 83 at IL 53 Intersection (Continuing on IL 53 West for 1/2 Mile)

CROSS STREETS		DIRECTION (EB/WB) (NB/SB)	LANE NO. (1, 2, 3)	PAVEMENT PATCH WIDTH	PAVEMENT PATCH LENGTH	REPAIR AREA (SQ FT)	REPAIR AREA (SQ YD)
FROM	TO						
IL 83		NB	1	12	6	72	8
		NB	1	12	15	180	20
		NB	2	12	6	72	8
		SB	1	12	6	72	8
		SB	1	12	15	180	20
		SB	2	12	6	72	8
		SB	2	12	15	180	20
IL 53		EB	1	12	6	72	8
		EB	2	12	6	72	8

TOTALS: 81 FT 108 SY

Design.dgn 5/18/2009 4:11:44 PM User=wlgreendp

ROUTE: IL 131 from IL 132 to Sunset Ave.

CROSS STREETS		DIRECTION (EB/WB) (NB/SB)	LANE NO. (1, 2, 3)	PAVEMENT PATCH WIDTH	PAVEMENT PATCH LENGTH	REPAIR AREA (SQ FT)	REPAIR AREA (SQ YD)		
FROM	TO								
IL 132	Sunset Ave.	NB	1	12	6	72	8		
		NB	1	12	6	72	8		
		NB	1	12	6	72	8		
		NB	1	12	6	72	8		
		NB	1	12	15	180	20		
		NB	1	12	15	180	20		
		NB	1	12	15	180	20		
		NB	1	12	15	180	20		
		NB	1	12	6	72	8		
		NB	1	12	6	72	8		
		NB	1	12	6	72	8		
		NB	1	12	6	72	8		
		NB	1	12	6	72	8		
		NB	1	12	6	72	8		
		NB	1	12	6	72	8		
		NB	1	12	6	72	8		
		NB	1	12	6	72	8		
		NB	1	12	6	72	8		
		IL 132	Sunset Ave.	NB	2	12	6	72	8
				NB	2	12	6	72	8
NB	2			12	6	72	8		
NB	2			12	6	72	8		
NB	2			12	15	180	20		
NB	2			12	15	180	20		
NB	2			12	15	180	20		
NB	2			12	15	180	20		
NB	2			12	15	180	20		
NB	2			12	6	72	8		
NB	2			12	6	72	8		
NB	2			12	6	72	8		
NB	2			12	6	72	8		
NB	2			12	6	72	8		
NB	2			12	15	180	20		
NB	2			12	6	72	8		
NB	2			12	6	72	8		
NB	2			12	6	72	8		

ROUTE: IL 131 from IL 132 to Sunset Ave.

CROSS STREETS		DIRECTION (EB/WB) (NB/SB)	LANE NO. (1, 2, 3)	PAVEMENT PATCH WIDTH	PAVEMENT PATCH LENGTH	REPAIR AREA (SQ FT)	REPAIR AREA (SQ YD)		
FROM	TO								
IL 132	Sunset Ave.	NB	Turn	12	6	72	8		
		NB	Turn	12	15	180	20		
		NB	Turn	12	15	180	20		
		NB	Turn	12	6	72	8		
		NB	Turn	12	6	72	8		
		NB	Turn	12	6	72	8		
		NB	Turn	12	6	72	8		
		NB	Turn	12	6	72	8		
		NB	Turn	12	6	72	8		
		NB	Turn	12	6	72	8		
		NB	Turn	12	6	72	8		
		NB	Turn	12	6	72	8		
		NB	Turn	12	6	72	8		
		NB	Turn	12	6	72	8		
		NB	Turn	12	6	72	8		
		NB	Turn	12	6	72	8		
		NB	Turn	12	6	72	8		
		NB	Turn	12	6	72	8		
		IL 132	Sunset Ave.	SB	1	12	6	72	8
				SB	1	12	6	72	8
SB	1			12	6	72	8		
SB	1			12	6	72	8		
SB	1			12	6	72	8		
SB	1			12	6	72	8		
SB	1			12	6	72	8		
SB	1			12	6	72	8		
SB	1			12	6	72	8		
SB	1			12	6	72	8		
SB	1			12	6	72	8		
SB	1			12	6	72	8		
SB	1			12	6	72	8		
SB	1			12	6	72	8		
SB	1			12	6	72	8		
SB	1			12	6	72	8		
SB	1			12	6	72	8		
IL 132	Sunset Ave.			SB	1	12	6	72	8
				SB	1	12	6	72	8
				SB	1	12	6	72	8
		SB	1	12	15	180	20		
		SB	1	12	15	180	20		
		SB	1	12	15	180	20		
		SB	1	12	15	180	20		
		SB	1	12	6	72	8		
		SB	1	12	6	72	8		
		SB	1	12	6	72	8		
		SB	1	12	6	72	8		
		SB	1	12	6	72	8		

CONTINUED ON NEXT SHEET

FILE NAME =	USER NAME = wlgreendp	DESIGNED -	REVISED -	<b>STATE OF ILLINOIS DEPARTMENT OF TRANSPORTATION</b>	<b>PATCHING SCHEDULE IL 131</b>		F.A. RTE.	SECTION	COUNTY	TOTAL SHEETS	SHEET NO.				
cd\pwwork\pww1001\WILGREENDP\0125047\Design.dgn		DRAWN -	REVISED -		SCALE:	SHEET NO.	OF	SHEETS	STA.	TO STA.	VAR.	2009-057PCC-PP	LK. & MCH.	23	12
		CHECKED -	REVISED -												
		DATE -	REVISED -												

PLOT SCALE = 100.0000' / IN.  
PLOT DATE = 5/18/2009  
FED. ROAD DIST. NO. 1 [ILLINOIS] FED. AID PROJECT  
CONTRACT NO. 60H48



ROUTE: **US 14 (Northwest Hwy.) from IL 22 to 1/2 Mile East of IL 22**

CROSS STREETS		DIRECTION (EB/WB) (NB/SB)	LANE NO. (1, 2, 3)	PAVEMENT PATCH WIDTH	PAVEMENT PATCH LENGTH	REPAIR AREA (SQ FT)	REPAIR AREA (SQ YD)
FROM	TO						
IL 22	1/2 Mile East of IL 22	EB	1	12	6	72	8
	(East of Lake County Line)	EB	2	12	6	72	8
		EB	1	12	6	72	8
		EB	2	12	15	180	20
		EB	1	12	6	72	8
		EB	2	12	15	180	20
		EB	1	12	6	72	8
		EB	2	12	6	72	8
		EB	1	12	6	72	8
		EB	2	12	8	96	11
		EB	1	12	6	72	8
		EB	2	12	6	72	8
		EB	1	12	6	72	8
		EB	2	12	6	72	8
		EB	1	12	6	72	8
		EB	2	12	6	72	8
		EB	1	12	6	72	8
		EB	2	12	6	72	8
		EB	1	12	6	72	8
		EB	2	12	6	72	8
		WB	1	12	6	72	8
		WB	2	12	6	72	8
		WB	1	12	6	72	8
		WB	2	12	6	72	8
		WB	1	12	6	72	8
		WB	2	12	6	72	8
		WB	1	12	6	72	8
		WB	2	12	6	72	8
		WB	1	12	6	72	8
		WB	2	12	6	72	8
		WB	1	12	6	72	8
		WB	2	12	6	72	8
		WB	1	12	6	72	8
		WB	2	12	6	72	8
		WB	1	12	6	72	8
		WB	2	12	6	72	8
		WB	1	12	6	72	8
		WB	2	12	6	72	8
		WB	1	12	6	72	8
		WB	2	12	6	72	8
		WB	1	12	6	72	8
		WB	2	12	6	72	8
		WB	1	12	6	72	8
		WB	2	12	6	72	8
		WB	1	12	6	72	8
		WB	2	12	6	72	8

TOTALS: 284 FT 379 SY

FILE NAME =	USER NAME = wilgreendp	DESIGNED -	REVISED -	<b>STATE OF ILLINOIS DEPARTMENT OF TRANSPORTATION</b>	<b>PATCHING SCHEDULE US 14</b>	F.A. RTE.	SECTION	COUNTY	TOTAL SHEETS	SHEET NO.
es:\pw\work\PWIDOT\WILGREENDP\0025047\design.dgn	DRAWN -	REVISED -	VAR.			2009-057PCC-PP	LK. & MCH.	23	14	
PLOT SCALE = 100.0000' / IN.	CHECKED -	REVISED -	CONTRACT NO. 60H48							
PLOT DATE = 5/18/2009	DATE -	REVISED -	SCALE:		SHEET NO.	OF	SHEETS	STA.	TO STA.	FED. ROAD DIST. NO. 1   ILLINOIS FED. AID PROJECT



ROUTE: IL 120 (Fox River to US 12)

CROSS STREETS		DIRECTION (EB/WB) (NB/SB)	LANE NO. (1, 2, 3)	PAVEMENT PATCH WIDTH	PAVEMENT PATCH LENGTH	REPAIR AREA (SQ FT)	REPAIR AREA (SQ YD)
FROM	TO						
Fox River	Chapel Hill Rd.	EB	1	12	8	96	11
		EB	1	12	15	180	20
		EB	2	12	15	180	20
		EB	1	12	15	180	20
		EB	1	12	6	72	8
		EB	2	12	15	180	20
Chapel Hill Rd.	Lily Lake Rd.	EB	1	12	6	72	8
		EB	2	12	6	72	8
		EB	1	12	6	72	8
		EB	2	12	6	72	8
Lily Lake Rd.	Darrel Rd.	EB	1	12	6	72	8
		EB	2	12	6	72	8
		EB	1	12	6	72	8
		EB	1	12	15	180	20
		EB	2	12	15	180	20
		EB	1	12	15	180	20
		EB	2	12	15	180	20
		EB	1	12	10	120	13
Darrel Rd.	US 12	EB	1	12	15	180	20
		EB	2	12	15	180	20
		EB	1	12	15	180	20
		EB	2	12	15	180	20
		EB	1	12	6	72	8
		EB	1	12	6	72	8
		EB	2	12	6	72	8
		EB	1	12	10	120	13
		EB	2	12	10	120	13
		EB	Turn	10	6	60	7
US 12	Darrel Rd.	WB	1	12	15	180	20
		WB	2	12	15	180	20
		WB	1	12	6	72	8
		WB	2	12	6	72	8
Darrel Rd.	Lily Lake Rd.	WB	1	12	6	72	8
		WB	1	12	6	72	8
		WB	2	12	6	72	8
Chapel Hill Rd.	Fox River	WB	2	12	6	72	8
		WB	1	12	6	72	8
		WB	1	12	6	72	8
		WB	2	12	6	72	8
		WB	2	12	6	72	8

TOTALS: 407 FT 541 SY

Design.dgn 5/18/2009 4:12:10 PM User=wilgreendp



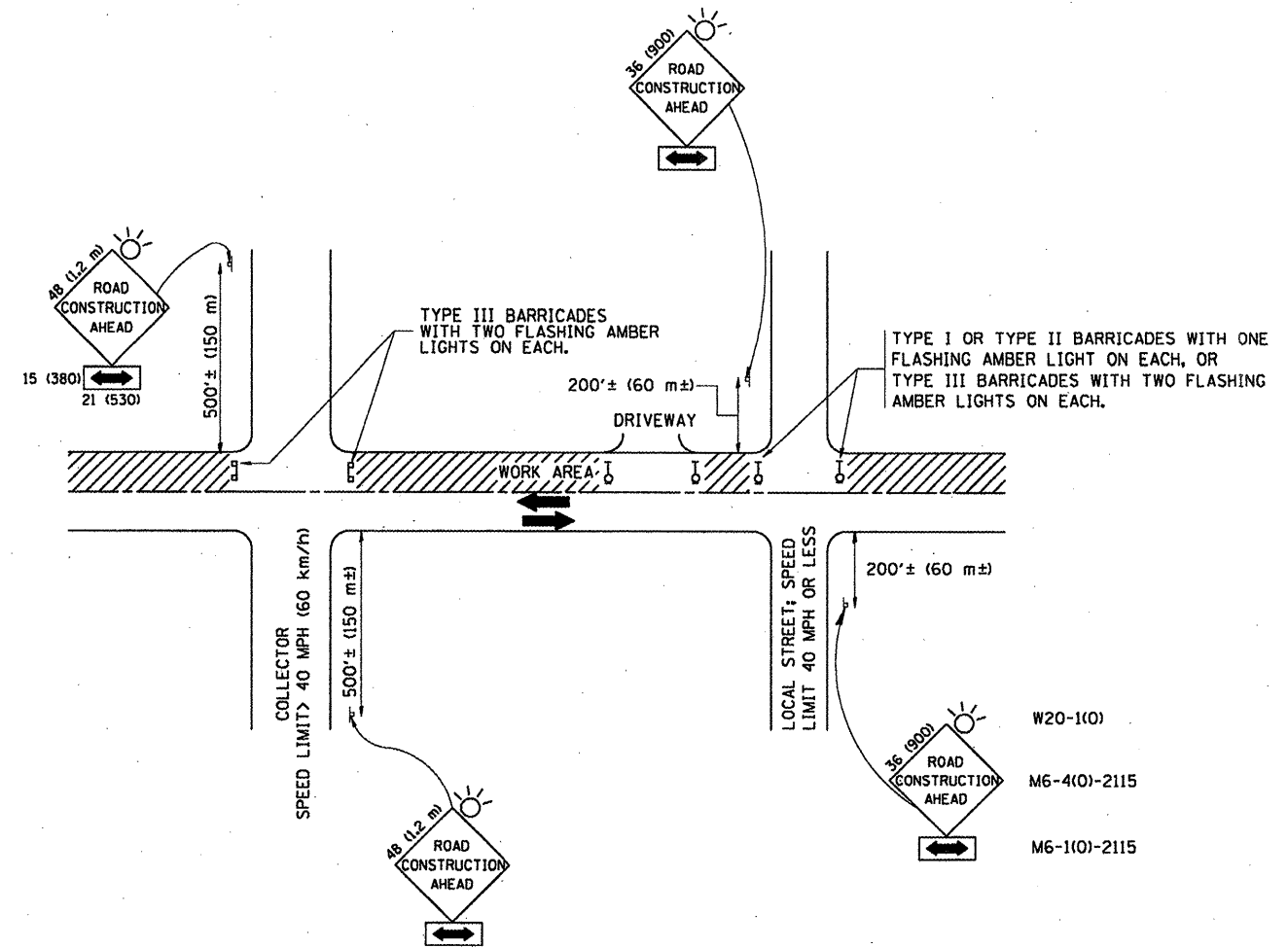


ROUTE: US 14 (Sands Rd. to IL 22)

CROSS STREETS		DIRECTION (EB/WB) (NB/SB)	LANE NO. (1, 2, 3)	PAVEMENT PATCH WIDTH	PAVEMENT PATCH LENGTH	REPAIR AREA (SQ FT)	REPAIR AREA (SQ YD)
FROM	TO						
Sands Rd.	Three Oaks Rd.	WB	1	12	6	72	8
		WB	2	12	6	72	8
		WB	1	12	6	72	8
		WB	2	12	6	72	8
		WB	1	12	6	72	8
		WB	2	12	6	72	8
		WB	1	12	6	72	8
		WB	2	12	6	72	8
		WB	1	12	6	72	8
		WB	2	12	15	180	20
		WB	1	12	6	72	8
		WB	2	12	6	72	8
		WB	1	12	6	72	8
		WB	2	12	6	72	8
		WB	1	12	6	72	8
		WB	2	12	8	96	11
		WB	1	12	6	72	8
		WB	2	12	6	72	8
		WB	1	12	6	72	8
		WB	2	12	8	96	11
		WB	1	12	8	96	11
		WB	2	12	6	72	8
		WB	1	12	6	72	8
		WB	2	12	6	72	8
		WB	1	12	15	180	20
		WB	1	12	6	72	8
WB	1	12	6	72	8		
Three Oaks Rd.	IL 22	WB	1	12	6	72	8
		WB	2	12	6	72	8
		WB	3	12	6	72	8
		WB	1	12	6	72	8
		WB	2	12	6	72	8
		WB	3	12	6	72	8
		WB	1	12	6	72	8
		WB	2	12	6	72	8
		WB	1	12	6	72	8
		WB	2	12	6	72	8
		WB	1	12	6	72	8
		WB	2	12	6	72	8
		WB	1	12	6	72	8
		WB	2	12	15	180	20
		WB	1	12	6	72	8
		WB	2	12	6	72	8
WB	2	12	6	72	8		
WB	2	12	6	72	8		
WB	2	12	6	72	8		
WB	2	12	15	180	20		

TOTALS: 1014 FT 1352 SY

FILE NAME =	USER NAME = wilgreendp	DESIGNED -	REVISED -	<b>STATE OF ILLINOIS DEPARTMENT OF TRANSPORTATION</b>	<b>PATCHING SCHEDULE US 14</b>				F.A. RTE.	SECTION	COUNTY	TOTAL SHEETS	SHEET NO.	
cs:\p\work\PW1001\WILGREENDP\d0125047\design.dgn	DRAWN -	REVISED -	SCALE:		SHEET NO.	OF	SHEETS	STA.	TO STA.	VAR.	2009-057PCC-PP	L.K. & MCH.	23	17
PLOT SCALE = 100.0000' / IN.	CHECKED -	REVISED -	CONTRACT NO. 60H48											
PLOT DATE = 5/18/2009	DATE -	REVISED -	FED. ROAD DIST. NO. 1 [ILLINOIS] FED. AID PROJECT											



**TRAFFIC CONTROL AND PROTECTION FOR SIDE ROADS, INTERSECTIONS, AND DRIVEWAYS**

**NOTES:**

**A. FOR NO LANE RESTRICTION ON THE SIDE ROAD OR DRIVEWAYS**

1. SIDE ROAD WITH A SPEED LIMIT OF 40 MPH (60 km/h) OR LESS AS SHOWN ON THE DRAWING AND AS DIRECTED BY THE ENGINEER:

a) ONE **ROAD CONSTRUCTION AHEAD** SIGN 36 x 36 (900x900) WITH A FLASHER AND FLAG MOUNTED ON IT APPROXIMATELY 200' (60 m) IN ADVANCE OF THE MAIN ROUTE.

b) THE CLOSED PORTION OF THE MAIN ROUTE SHALL BE PROTECTED BY BLOCKING WITH TYPE I, TYPE II OR TYPE III BARRICADES, 1/3 OF THE CROSS SECTION OF THE CLOSED PORTION.

2. SIDE ROAD WITH A SPEED LIMIT GREATER THAN 40 MPH (60 km/h) AS SHOWN ON THE DRAWING AND AS DIRECTED BY THE ENGINEER:

a) ONE **ROAD CONSTRUCTION AHEAD** SIGN 48 x 48 (1.2 m x 1.2 m) WITH A FLASHER MOUNTED ON IT APPROXIMATELY 500' (150 m) IN ADVANCE OF THE MAIN ROUTE.

b) THE CLOSED PORTION OF THE MAIN ROUTE SHALL BE PROTECTED BY BLOCKING WITH TYPE III BARRICADES, 1/2 OF THE CROSS SECTION OF THE CLOSED PORTION.

3. WHEN THE SIDE ROAD LIES BETWEEN THE BEGINNING OF THE MAINLINE SIGNING AND THE WORK ZONE, A SINGLE HEADED ARROW (M6-1) SHALL BE USED IN LIEU OF THE DOUBLE HEADED ARROW (M6-4).

**B. FOR A LANE CLOSURE ON A SIDE ROAD OR DRIVEWAY:**

USE APPLICABLE PORTIONS OF THE TYPICAL APPLICATION OF TRAFFIC CONTROL DEVICES (STD. 70150), STD. 701606 OR THE APPROPRIATE STANDARD. THE SPACING OF SIGNS AND BARRICADES SHALL BE ADJUSTED FOR FIELD CONDITIONS AS DIRECTED BY THE ENGINEER. THE DIRECTIONAL ARROW SHALL BE COVERED OR REMOVED WHEN NO LONGER CONSISTENT WITH THE SIDE ROAD LANE CLOSURE.

C. ADVANCE WARNING SIGNS ARE TO BE OMITTED ON DRIVEWAY UNLESS OTHERWISE NOTED.

D. THE TRAFFIC CONTROL AND PROTECTION FOR SIDE ROADS, INTERSECTIONS, AND DRIVEWAYS SHALL BE INCIDENTAL TO THE COST OF SPECIFIED TRAFFIC CONTROL STANDARDS OR ITEMS.

All dimensions are in millimeters (inches) unless otherwise shown.

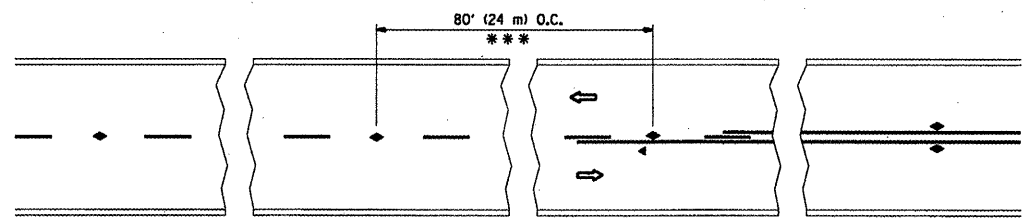
FILE NAME =	USER NAME = wilgreendp	DESIGNED - LHA	REVISED - J. OBERLE 10-18-95
ca:\p\work\PIWIDOT\WILGREENDP\d0125047\stStd.dgn		DRAWN -	REVISED - A. HOUSEH 03-06-96
PLOT SCALE = 100.0000 ' / IN.		CHECKED -	REVISED - A. HOUSEH 10-15-96
PLOT DATE = 5/18/2009		DATE - 06-89	REVISED - T. RAMMACHER 01-06-00

**STATE OF ILLINOIS  
DEPARTMENT OF TRANSPORTATION**

**TRAFFIC CONTROL AND PROTECTION FOR  
SIDE ROADS, INTERSECTIONS, AND DRIVEWAYS**

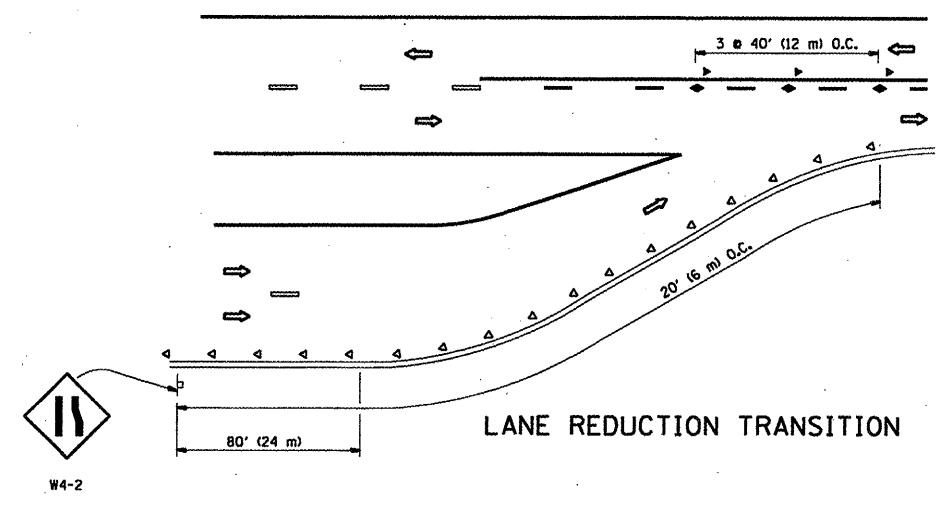
SCALE: NONE SHEET NO. 1 OF 1 SHEETS STA. TO STA.

F.A. RTE.	SECTION	COUNTY	TOTAL SHEETS	SHEET NO.
VAR. 2009-057PCC-PP	UK + MCH.	23	18	
TC-10			CONTRACT NO. 60H48	
FED. ROAD DIST. NO. 1 ILLINOIS FED. AID PROJECT				

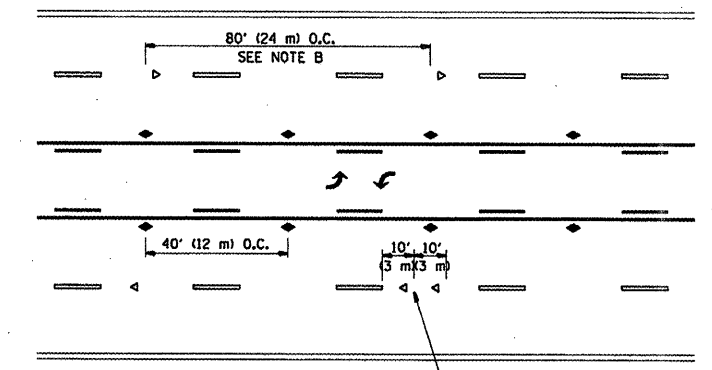


\*\*\* REDUCE TO 40' (12 m) O.C. ON CURVES WITH POSTED OR ADVISORY SPEED 45 M.P.H. (70 km/h) OR LESS.

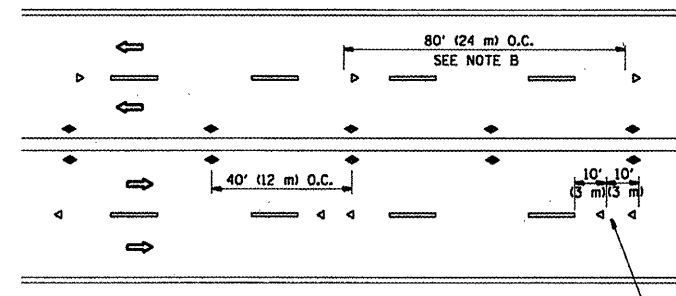
TWO-LANE/TWO-WAY



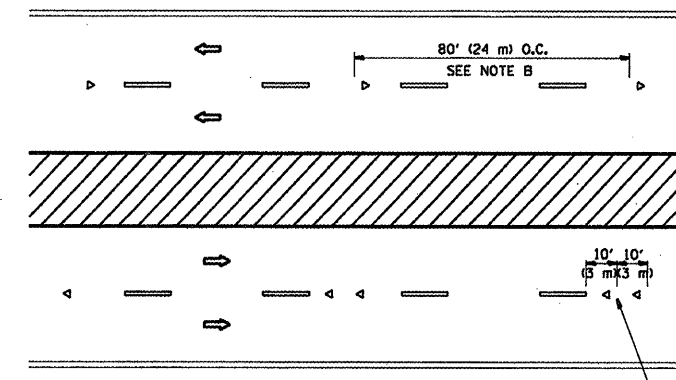
LANE REDUCTION TRANSITION



TWO-WAY LEFT TURN



MULTI-LANE/UNDIVIDED



MULTI-LANE/DIVIDED

GENERAL NOTES

1. MARKERS USED WITH DASHED LINES SHALL BE CENTERED IN THE GAP BETWEEN SEGMENTS.
2. MARKERS USED ADJACENT TO SOLID LINES SHALL BE OFFSET 2 TO 3 (50 TO 75) TOWARD TRAFFIC AS SHOWN.
3. MARKERS THROUGH TANGENTS LESS THAN 500' (150 m) IN LENGTH BETWEEN CURVES SHALL BE INSTALLED AT THE LESSER OF THE TWO CURVE SPACINGS.

SYMBOLS

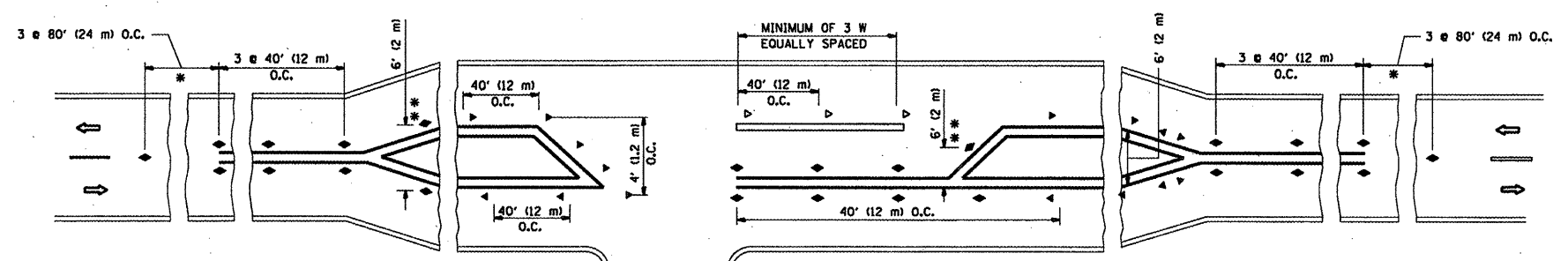
- YELLOW STRIPE
- WHITE STRIPE
- ◀ ONE-WAY AMBER MARKER
- ◀ ONE-WAY CRYSTAL MARKER (W/O)
- ◆ TWO-WAY AMBER MARKER

LANE MARKER NOTES

- B. REDUCE TO 40' (12 m) O.C. ON CURVES WHERE ADVISORY SPEEDS ARE 10 M.P.H (20 km/h) LOWER THAN POSTED SPEEDS.
- A. USE DOUBLE LANE LINE MARKERS SPACED AS SHOWN.

DESIGN NOTES

1. DOUBLE LANE LINE MARKERS SHALL BE USED UNLESS SPECIFIED OTHERWISE.
2. EXCEPT AS SHOWN ON THE LANE REDUCTION TRANSITION AND FREEWAY EXIT RAMP DETAIL, MARKERS ARE NOT TO BE SPECIFIED ON RIGHT EDGE LINES.
3. THE EXACT MARKER LIMITS, SPACING, AND COLOR SHOULD BE INCLUDED IN THE PLANS.
4. MARKERS SHOULD NOT BE USED ALONGSIDE CURBS EXCEPT FOR EXTREMELY SHORT SECTIONS OF CURBS WHERE NOT MORE THAN TWO MARKERS WOULD BE INVOLVED.



LEFT TURN

\* SEE TWO-LANE/TWO-WAY WHERE MARKERS CONTINUE  
 \*\* WHERE THE MEDIAN WIDTH IS 6' (2 m) OR LESS USE TWO-WAY MARKERS.

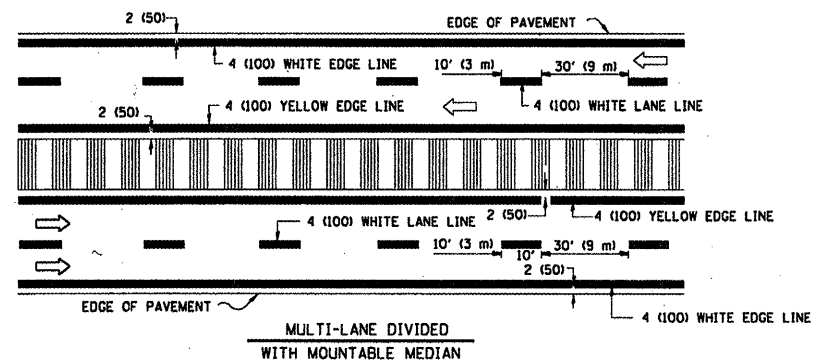
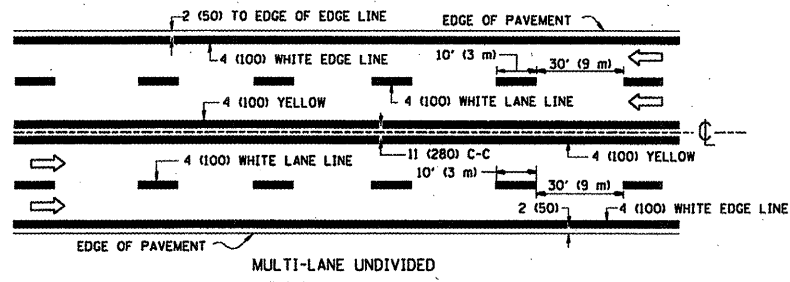
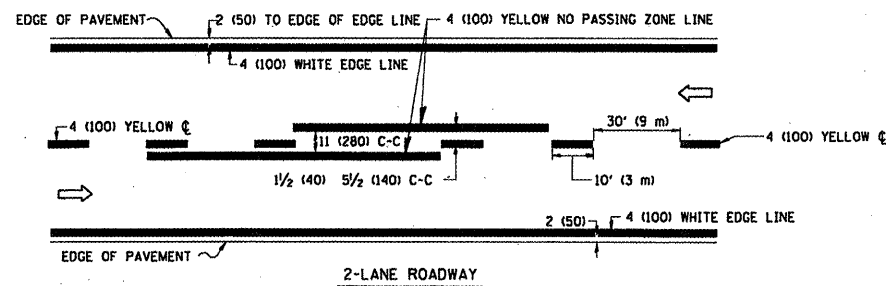
All dimensions are in inches (millimeters) unless otherwise shown.

STATE OF ILLINOIS  
 DEPARTMENT OF TRANSPORTATION

TYPICAL APPLICATIONS  
 RAISED REFLECTIVE PAVEMENT MARKERS (SNOW-PLow RESISTANT)  
 SCALE: NONE SHEET NO. 1 OF 1 SHEETS STA. TO STA.

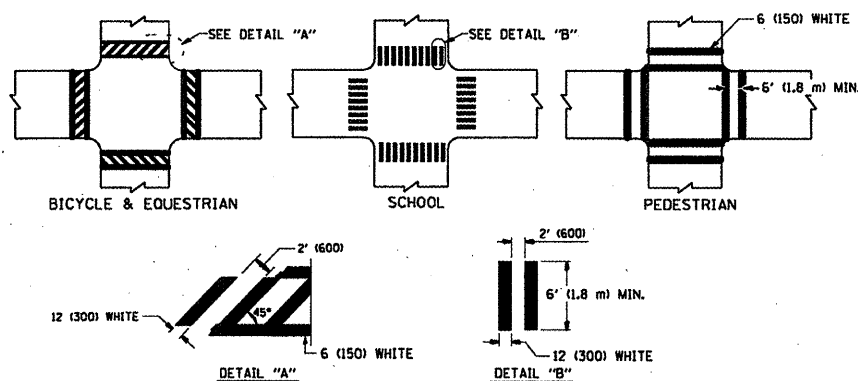
F.A. RTE.	SECTION	COUNTY	TOTAL SHEETS	SHEET NO.
VAR. 2009-057PCC-PP	Lk.+mcH.	23	19	
TC-11			CONTRACT NO. 60448	
FED. ROAD DIST. NO. 1 (ILLINOIS) FED. AID PROJECT				

FILE NAME =	USER NAME = wilgreendp	DESIGNED -	REVISED - T. RAMMACHER 09-19-94
ct:\pwwork\PKWIDOT\WILGREENDP\08125947\dstStd.dgn		DRAWN -	REVISED - T. RAMMACHER 03-12-99
PLOT SCALE = 100.0000' / IN.		CHECKED -	REVISED - T. RAMMACHER 01-06-00
PLOT DATE = 5/18/2009		DATE -	REVISED -

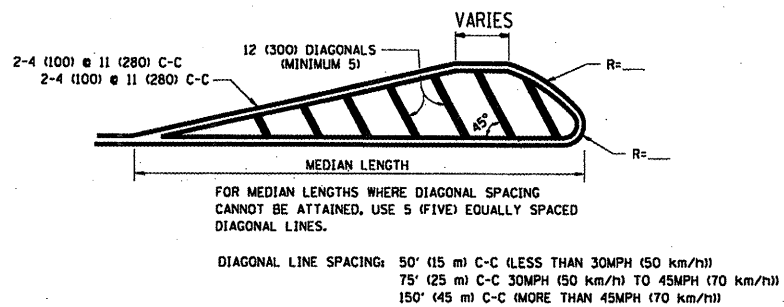
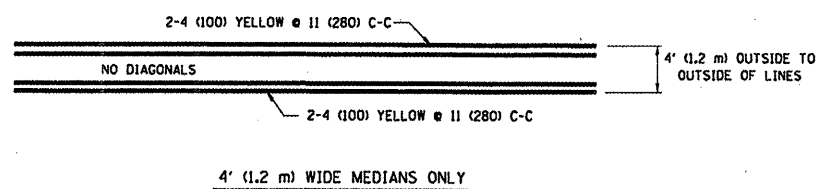


NOTE: MEDIANS WITH BARRIER CURB DO NOT REQUIRE AN EDGE LINE

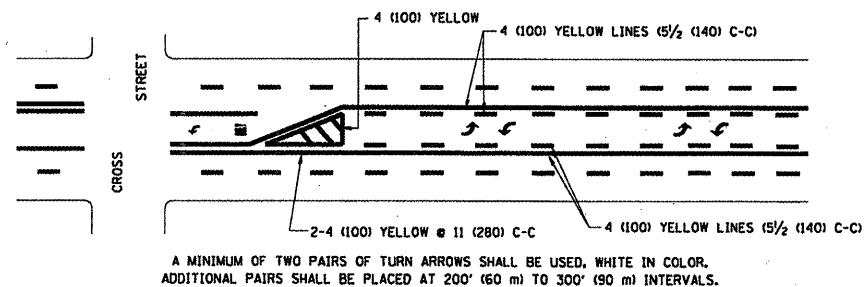
**TYPICAL LANE AND EDGE LINE MARKING**



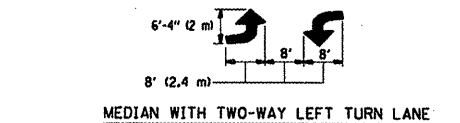
**TYPICAL CROSSWALK MARKING**



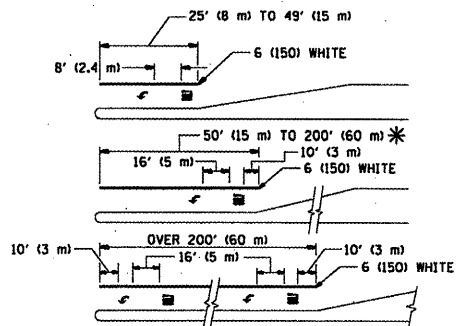
**MEDIANS OVER 4' (1.2 m) WIDE**



**TYPICAL PAINTED MEDIAN MARKING**

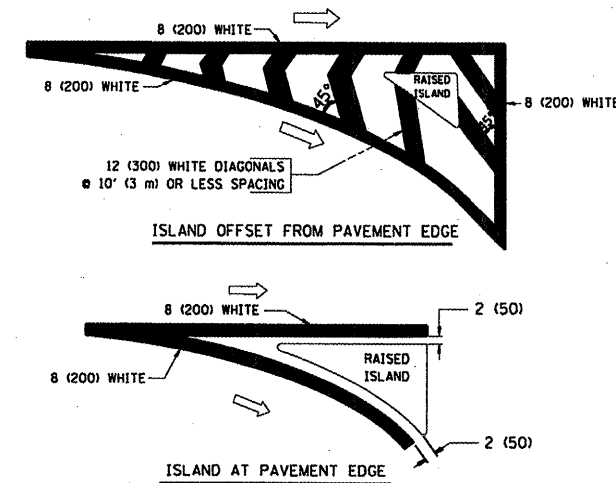


**TYPICAL PAINTED MEDIAN MARKING**



FULL SIZE LETTERS 8' (2.4 m) AND ARROWS SHALL BE USED. AREA = 15.6 SQ. FT. (1.5 m<sup>2</sup>) ONLY AREA = 20.8 SQ. FT. (1.9 m<sup>2</sup>)  
 \* TURN LANES IN EXCESS OF 400' (120 m) IN LENGTH MAY HAVE AN ADDITIONAL SET OF ARROW - "ONLY" INSTALLED MIDWAY BETWEEN THE OTHER TWO SETS OF ARROW - "ONLY".

**TYPICAL TURN LANE MARKING**



**TYPICAL ISLAND MARKING**

TYPE OF MARKING	WIDTH OF LINE	PATTERN	COLOR	SPACING / REMARKS
CENTERLINE ON 2 LANE PAVEMENT	4 (100)	SKIP-DASH	YELLOW	10' (3 m) LINE WITH 30' (9 m) SPACE
CENTERLINE ON MULTI-LANE UNDIVIDED PAVEMENT	2 @ 4 (100)	SOLID	YELLOW	11 (280) C-C
NO PASSING ZONE LINES: FOR ONE DIRECTION FOR BOTH DIRECTIONS	4 (100) 2 @ 4 (100)	SOLID SOLID	YELLOW YELLOW	5/2 (140) C-C FROM SKIP-DASH CENTERLINE 11 (280) C-C OMIT SKIP-DASH CENTERLINE BETWEEN
LANE LINES	4 (100) 5 (125) ON FREEWAYS	SKIP-DASH SKIP-DASH	WHITE WHITE	10' (3 m) LINE WITH 30' (9 m) SPACE
DOTTED LINES (EXTENSIONS OF CENTER, LANE OR TURN LANE MARKINGS)	SAME AS LINE BEING EXTENDED	SKIP-DASH	SAME AS LINE BEING EXTENDED	2' (600) LINE WITH 6' (1.8 m) SPACE
EDGE LINES	4 (100)	SOLID	YELLOW-LEFT WHITE-RIGHT	OUTLINE MOUNTABLE MEDIANS IN YELLOW. EDGE LINES ARE NOT USED NEXT TO BARRIER CURB
TURN LANE MARKINGS	6 (150) LINE: FULL SIZE LETTERS & SYMBOLS (8' (2.4 m))	SOLID	WHITE	SEE TYPICAL TURN LANE MARKING DETAIL
TWO WAY LEFT TURN MARKING	2 @ 4 (100) EACH DIRECTION 8' (2.4 m) LEFT ARROW	SKIP-DASH AND SOLID IN PAIRS	YELLOW WHITE	10' (3 m) LINE WITH 30' (9 m) SPACE FOR SKIP-DASH; 5/2 (140) C-C BETWEEN SOLID LINE AND SKIP-DASH LINE SEE TYPICAL TWO-WAY LEFT TURN MARKING DETAIL
CROSSWALK LINES (PEDESTRIAN) A. DIAGONALS (BIKE & EQUESTRIAN) B. LONGITUDINAL BARS (SCHOOL)	2 @ 6 (150) 12 (300) @ 45° 12 (300) @ 90°	SOLID SOLID SOLID	WHITE WHITE WHITE	NOT LESS THAN 6' (1.8 m) APART 2' (600) APART SEE TYPICAL CROSSWALK MARKING DETAILS.
STOP LINES	24 (600)	SOLID	WHITE	PLACE 4' (1.2 m) IN ADVANCE OF AND PARALLEL TO CROSSWALK, IF PRESENT. OTHERWISE, PLACE AT DESIRED STOPPING POINT. PARALLEL TO CROSSROAD CENTERLINE, WHERE POSSIBLE
PAINTED MEDIANS	2 @ 4 (100) WITH 12 (300) DIAGONALS @ 45° NO DIAGONALS USED FOR 4' (1.2 m) WIDE MEDIANS	SOLID	YELLOW; TWO WAY TRAFFIC WHITE; ONE WAY TRAFFIC	11 (280) C-C FOR THE DOUBLE LINE SEE TYPICAL PAINTED MEDIAN MARKING.
CORE MARKING AND CHANNELIZING LINES	8 (200) WITH 12 (300) DIAGONALS @ 45°	SOLID	WHITE	DIAGONALS: 15' (4.5 m) C-C (LESS THAN 30MPH (50 km/h)) 20' (6 m) C-C (30MPH (50 km/h)) TO 45MPH (70 km/h)) 30' (9 m) C-C (OVER 45MPH (70 km/h))
RAILROAD CROSSING	24 (600) TRANSVERSE LINES; "RR" IS 6' (1.8 m) LETTERS; 16 (400) LINE FOR "X"	SOLID	WHITE	SEE STATE STANDARD 780001 AREA OF: "R"=3.6 SQ. FT. (0.33 m <sup>2</sup> ) EACH "X"=54.0 SQ. FT. (5.0 m <sup>2</sup> )
SHOULDER DIAGONALS	12 (300) @ 45°	SOLID	WHITE - RIGHT YELLOW - LEFT	50' (15 m) C-C (LESS THAN 30MPH (50 km/h)) 75' (25 m) C-C (30 MPH (50 km/h)) TO 45MPH (70 km/h)) 150' (45 m) C-C (OVER 45MPH (70 km/h))

FOR FURTHER DETAILS ON PAVEMENT MARKING REFER TO STANDARD SPECIFICATIONS FOR ROAD AND BRIDGE CONSTRUCTION AND STATE STANDARD 780001.

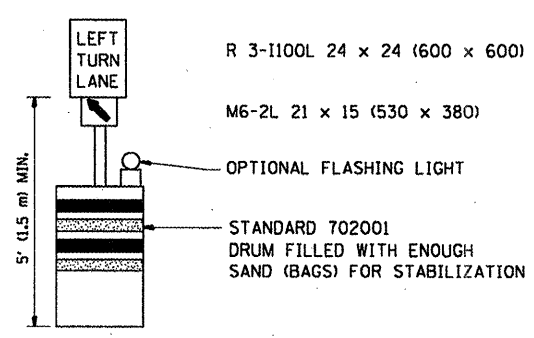
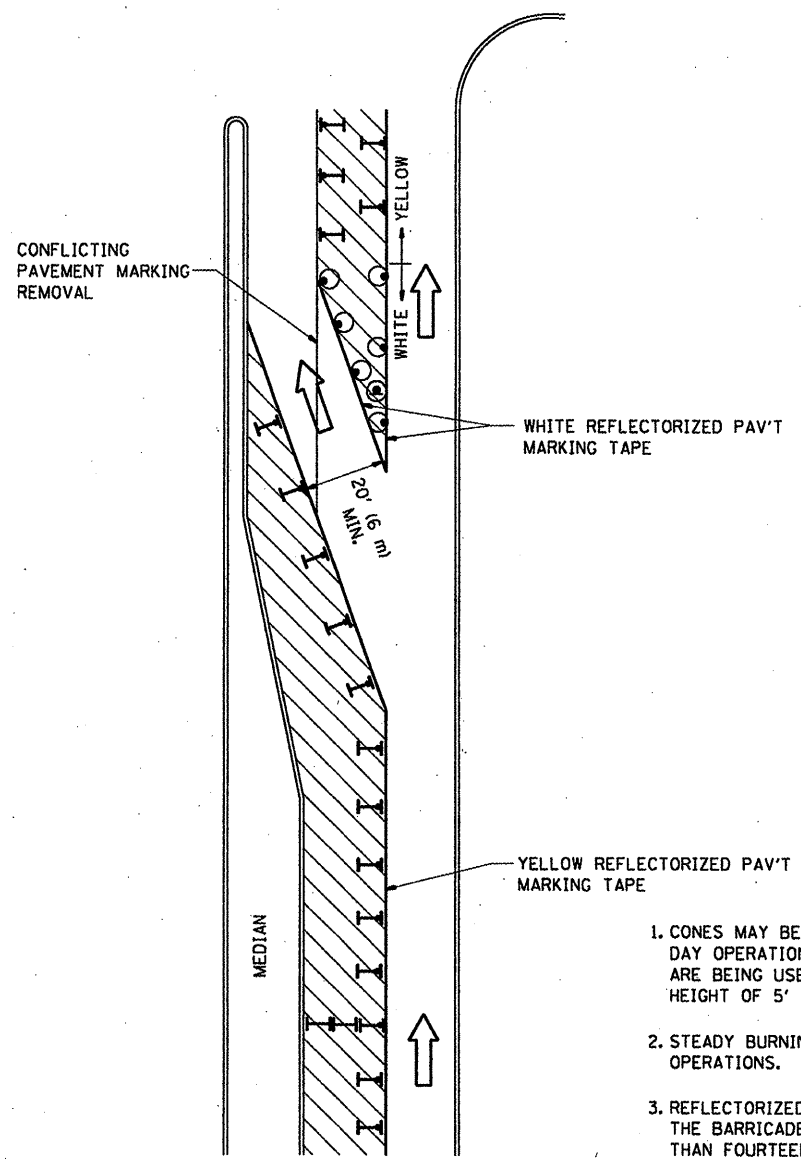
All dimensions are in inches (millimeters) unless otherwise shown.

FILE NAME =	USER NAME = wjlgreendp	DESIGNED - EVERS	REVISED - T. RAMMACHER 10-27-94
at\p\work\PIWIDOT\WILGREENDP\08125047\13atStd.dgn		DRAWN -	REVISED - A. HOUSEH 10-09-96
	PLOT SCALE = 1/8" = 1' IN.	CHECKED -	REVISED - A. HOUSEH 10-17-96
	PLOT DATE = 5/18/2009	DATE - 03-19-90	REVISED - T. RAMMACHER 01-06-00

**STATE OF ILLINOIS  
DEPARTMENT OF TRANSPORTATION**

DISTRICT ONE			
TYPICAL PAVEMENT MARKINGS			
SCALE: NONE	SHEET NO. 1 OF 1 SHEETS	STA.	TO STA.

F.A. RTE.	SECTION	COUNTY	TOTAL SHEETS	SHEET NO.
VAR.	2009-057 PCC-PP	LK + MCH	23	20
TC-13			CONTRACT NO. 60M18	
FED. ROAD DIST. NO. 1 ILLINOIS FED. AID PROJECT				



**GENERAL NOTES**

1. CONES MAY BE SUBSTITUTED FOR BARRICADES OR DRUMS AT HALF THE SPACING DURING DAY OPERATIONS. CONES SHALL BE A MINIMUM OF 28 (710) IN HEIGHT. WHEN CONES ARE BEING USED, THE "LEFT TURN LANE" SIGN MAY BE SKID MOUNTED AT A MINIMUM HEIGHT OF 5' (1.5 m).
2. STEADY BURNING LIGHTS WILL NOT BE REQUIRED ON BARRICADES OR DRUMS FOR DAY OPERATIONS. ALL LIGHTS SHALL BE MONODIRECTIONAL.
3. REFLECTORIZED TEMPORARY PAVEMENT MARKING TAPE SHALL BE PLACED THROUGHOUT THE BARRICADED AREA OF EACH TURN BAY WHERE THE CLOSURE TIME IS GREATER THAN FOURTEEN DAYS.
4. THIS APPLICATION ALSO APPLIES WHEN WORK IS BEING PERFORMED IN THE RIGHT LANE(S) AND THE RIGHT TURN BAY IS TO REMAIN OPEN. UNDER THIS CONDITION, "RIGHT TURN LANE" R3-100 24 x 24 (600 x 600) AND M6-2R 21 x 15 (530 x 380) SHALL BE USED.
5. THESE CONTROLS SHALL SUPPLEMENT MAINLINE TRAFFIC CONTROL FOR LANE CLOSURES.
6. LONGITUDINAL DIMENSIONS MAY BE ADJUSTED TO FIT FIELD CONDITIONS.
7. FORM BT 725 IS REQUIRED.
8. TRAFFIC CONTROL AND PROTECTION AT TURN BAYS (TO REMAIN OPEN TO TRAFFIC) SHALL BE INCLUDED IN THE COST SPECIFIED TRAFFIC CONTROL STANDARDS OR ITEMS.

**LEGEND**

- WORK AREA
- LANE OPEN TO TRAFFIC
- TYPE I OR II BARRICADE WITH STEADY BURN LIGHT
- DRUM WITH STEADY BURN LIGHT
- DRUM WITH SIGN (WITH OPTIONAL FLASHING LIGHT) SEE DETAIL
- TYPE I OR II CHECK BARRICADE WITH FLASHING LIGHT

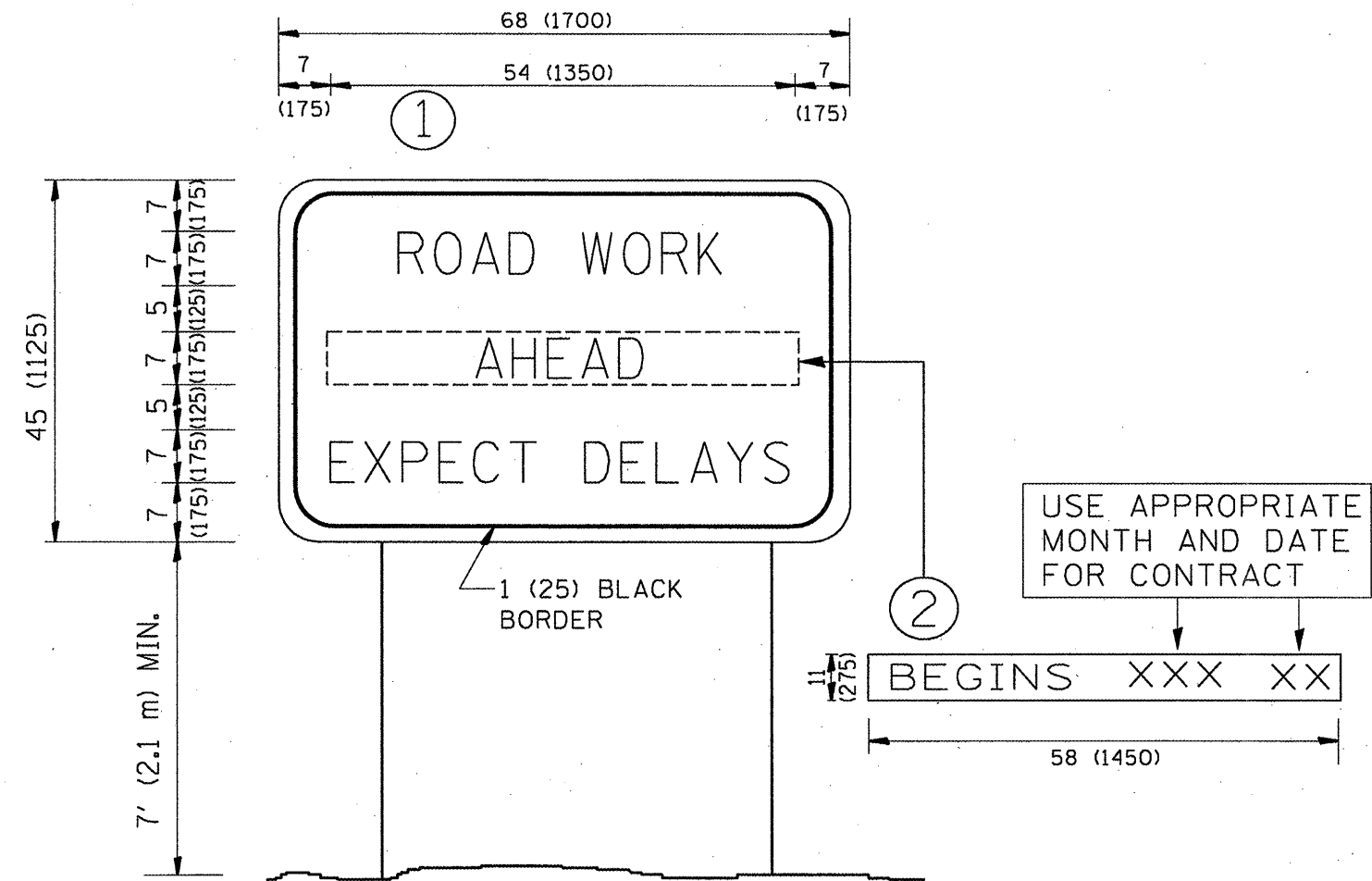
All dimensions are in inches (millimeters) unless otherwise shown.

FILE NAME =	USER NAME = wlgreendp	DESIGNED -	REVISED -T. RAMMACHER 09-08-94
ct:\p\work\PWIDOT\WILGREENDP\08128847\1001st5td.dgn		DRAWN -	REVISED - A. HOUSEH 11-07-95
	PLOT SCALE = 100.0000 / IN.	CHECKED -	REVISED - A. HOUSEH 10-12-96
	PLOT DATE = 5/18/2009	DATE -	REVISED -T. RAMMACHER 01-06-00

**STATE OF ILLINOIS  
DEPARTMENT OF TRANSPORTATION**

**TRAFFIC CONTROL AND PROTECTION AT TURN BAYS  
(TO REMAIN OPEN TO TRAFFIC)**  
SCALE: NONE SHEET NO. 1 OF 1 SHEETS STA. TO STA.

F.A. RTE.	SECTION	COUNTY	TOTAL SHEETS	SHEET NO.
VAR. 2009-057PCC-PP	LK+McH	23	21	
TC-14		CONTRACT NO. 68448		
FED. ROAD DIST. NO. 1 ILLINOIS FED. AID PROJECT				



**NOTES:**

1. USE BLACK LETTERING ON ORANGE BACKGROUND.
2. ERECT SIGNS IN ADVANCE OF THE LOCATION FOR THE "ROAD CONSTRUCTION AHEAD" SIGN AT LOCATIONS AS DIRECTED BY THE ENGINEER.
3. ERECT SIGN ① WITH INSTALLED PANEL ② ONE WEEK PRIOR TO THE START OF CONSTRUCTION.
4. REMOVE PANEL ② SOON AFTER THE START OF CONSTRUCTION.
5. SEE SPECIAL PROVISION FOR "TEMPORARY INFORMATION SIGNING" FOR ADDITIONAL INFORMATION.
6. ONE SIGN ASSEMBLY EQUALS 25.70 SQ. FT. (2.3 SQ. M.)
7. SHALL BE PAID FOR AS TEMPORARY INFORMATION SIGNING.

ALL DIMENSIONS ARE IN INCHES (MILLIMETERS) UNLESS OTHERWISE SHOWN.

**STATE OF ILLINOIS  
DEPARTMENT OF TRANSPORTATION**

**ARTERIAL ROAD  
INFORMATION SIGN**

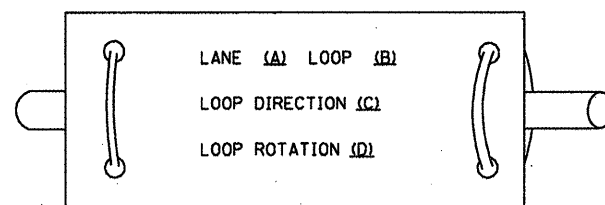
FILE NAME =	USER NAME = wilgreendp	DESIGNED -	REVISED - R. MIRS 09-15-97
ct\pwork\work\PIWIDOT\WILGREENDP\0125047\stStd.dgn		DRAWN -	REVISED - R. MIRS 12-11-97
	PLOT SCALE = 100.0000 ' / IN.	CHECKED -	REVISED - T. RAMMACHER 02-02-99
	PLOT DATE = 5/18/2009	DATE -	REVISED - C. JUCIUS 01-31-07

SCALE: NONE	SHEET NO. 1 OF 1 SHEETS	STA.	TO STA.	F.A. RTE. VAR. 2009-057PCC-PP	SECTION LK + McH. 23	COUNTY TC-22	TOTAL SHEETS 23	SHEET NO. 22
				FED. ROAD DIST. NO. 1 [ILLINOIS] FED. AID PROJECT CONTRACT NO. 60498				

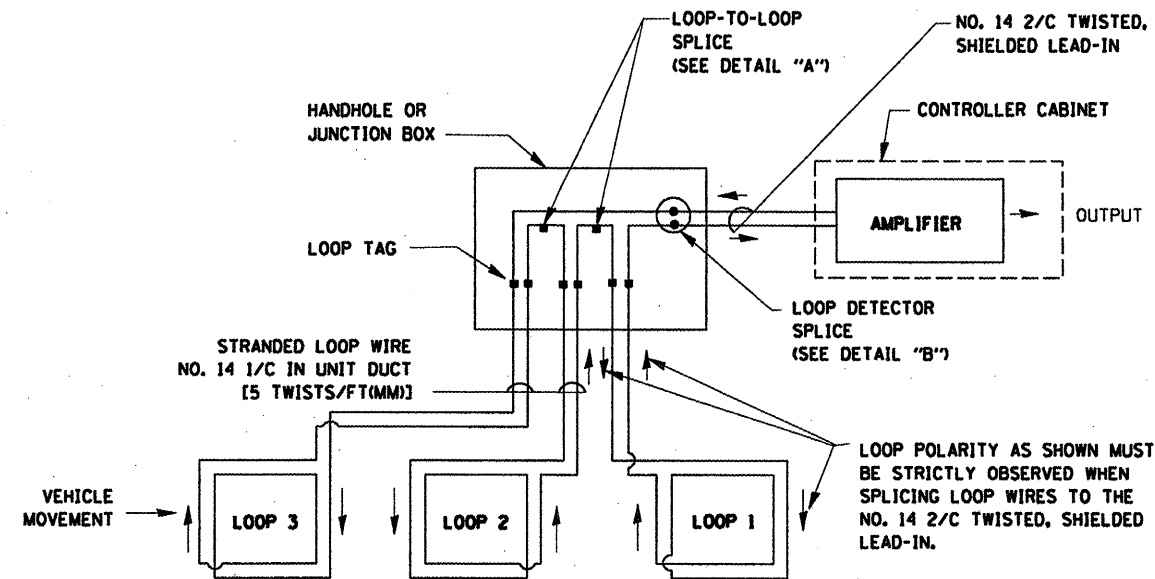
## LOOP DETECTOR NOTES

- EACH PAIR OF LOOP WIRES SHALL BE PLACED IN A SEPARATE UNIT DUCT FROM THE EDGE OF PAVEMENT TO THE HANDHOLE. SPACING BETWEEN THE HOLES DRILLED IN THE PAVEMENT SHALL NOT BE LESS THAN 6" (150 mm). UNIT DUCT SHALL BE INCLUDED IN THE COST OF THE LOOP WIRE.
- THE NUMBER OF LOOP TURNS SHALL BE AS RECOMMENDED BY THE AMPLIFIER MANUFACTURER. ALL ADJACENT SIDES OF THE LOOPS SHALL BE INSTALLED IN SUCH A WAY THAT THE CURRENT FLOW IS IN THE SAME DIRECTION TO REINFORCE ITS MAGNETIC FIELDS FOR SMALL VEHICLE DETECTION.
- EACH LOOP LEAD-IN SHALL BE IDENTIFIED AND PERMANENTLY TAGGED IN THE HANDHOLE. EACH LEAD-IN CABLE TAG SHALL INDICATE THE LOCATION OF THE LOOP, LOOP ROTATION (CLOCKWISE/COUNTERCLOCKWISE), LOOP LEAD-IN DIRECTION (IN OR OUT), LOOP CABLE NUMBER AND LOCATION IN CABINET, AND NUMBER OF TURNS IN THE DETECTOR LOOPS IN WATER PROOF INK AS INDICATED ON THE DISTRICT 1 STANDARD TRAFFIC SIGNAL DESIGN DETAIL. THE CONTRACTOR SHALL MARK LOOP LOCATIONS ON RECORD DRAWINGS AND PRESENT TO THE ENGINEER AFTER FINAL INSPECTION. LOOPS SHALL BE MARKED BY LANE AND LOOP NUMBER. SEE DETAIL BELOW.
- ALL LOOP CABLE SHALL BE FASTENED WITH PLASTIC TIE WRAP TO THE HANDHOLE HOOKS.
- IN ASPHALT PAVEMENT, LOOPS SHOULD BE PLACED IN THE BINDER AND DIVESHOLES MARKED AT THE CURB WITH A SAW-CUT. THE SAW-CUT SHALL BE CUT IN ACCORDANCE WITH LOCAL AND E.P.A. DUST CONTROL REQUIREMENTS. DETECTOR LOOP(S) SHALL NOT BE INSTALLED IN WET CONDITIONS AND THE SAW-CUTS MUST BE FREE OF DEBRIS AND RESIDUE SUCH AS DUST AND WATER WHICH IS TO BE ACHIEVED BY THE USE OF COMPRESSED AIR, WIRE BRUSHING AND HEAT DRYING ACCORDING TO SEALANT MANUFACTURER REQUIREMENTS. THE DETECTOR WIRE SHALL BE HELD IN PLACE BY THE USE OF FORM WEDGES. WEDGES SHALL BE SPACED NO MORE THAN 18" (450 mm) APART.
- LOOP SPLICES SHALL BE SOLDERED USING A SOLDERING IRON. BLOW TORCHES OR OTHER DEVICES WHICH OXIDIZE COPPER CABLE SHALL NOT BE ALLOWED FOR SOLDERING OPERATIONS. SEE DETAIL BELOW RIGHT.
- PREFORMED DETECTOR LOOPS SHALL BE USED, AS SHOWN ON THE PLANS, WHERE NEW CONCRETE PAVEMENT IS PROPOSED. THE INSTALLATION OF PREFORMED LOOPS SHALL BE IN ACCORDANCE WITH THE DISTRICT 1 SPECIFICATIONS OR AS DIRECTED BY THE ENGINEER.

### LOOP LEAD-IN CABLE TAG

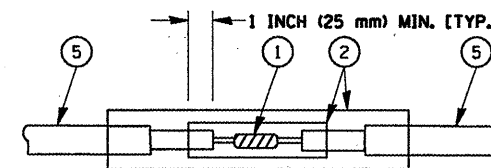


- LANE 1 IS THE LANE CLOSEST TO THE CENTERLINE OF THE ROADWAY
- LOOP #1 IS THE LOOP IN THE LANE CLOSEST TO THE INTERSECTION.
- LABEL LOOP CABLE "IN" OR LOOP CABLE "OUT".
- LABEL LOOP CABLE CLOCKWISE OR LOOP CABLE COUNTERCLOCKWISE.

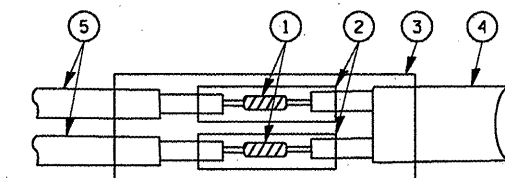


### DETECTOR LOOP WIRING SCHEMATIC

- LOOPS SHALL BE SPLICED IN SERIES.
- SAW-CUTS SHALL BE A MINIMUM WIDTH OF 5/16" (8 mm).
- SAW-CUT DEPTHS SHALL BE 3" (75 mm). IF IN CONCRETE, THE SAW-CUT DEPTH SHALL BE TO THE TOP OF THE REINFORCEMENT.
- LOOP CORNERS SHALL BE DRILLED WITH A 2" (50 mm) DIAMETER CORE.



DETAIL "A"  
LOOP-TO-LOOP SPLICE



DETAIL "B"  
LOOP-TO-CONTROLLER SPLICE

### LOOP DETECTOR SPLICE

- WESTERN UNION SPLICE SOLDERED WITH ROSIN CORE FLUX. ALL EXPOSED SURFACES OF THE SOLDER SHALL BE SMOOTH.
- WCSMW 30/100 HEAT SHRINK TUBE, MINIMUM LENGTH 3" (75 mm), UNDERWATER GRADE.
- WCS 200/750 HEAT SHRINK TUBE, MINIMUM LENGTH 6" (150 mm), UNDERWATER GRADE.
- NO. 14 2/C TWISTED, SHIELDED CABLE.
- LOOP CONDUCTOR WITH FLEXIBLE PLASTIC TUBE.

FILE NAME =	USER NAME = wjgreendp	DESIGNED - D.A.D.	REVISED - 11-12-01
ci:\p\work\PWIDOT\WILGREENOP\08128047\08128047.dgn	Drawn - R.W.P.	CHECKED - D.A.Z.	REVISED - BUR. TRAFFIC 01-01-02
PLOT SCALE = 100.0000' / IN.	DATE - 05-30-00	REVISED -	
PLOT DATE = 5/18/2009			

STATE OF ILLINOIS  
DEPARTMENT OF TRANSPORTATION

DISTRICT ONE  
STANDARD TRAFFIC SIGNAL DESIGN DETAILS

SCALE: NONE SHEET NO. 1 OF 4 SHEETS STA. TO STA.

F.A. RTE.	SECTION	COUNTY	TOTAL SHEETS	SHEET NO.
VAR. 2009-057PCC-PP	LK. + MCH.	23	23	
TS-05		CONTRACT NO. 60448		
FED. ROAD DIST. NO. 1 ILLINOIS FED. AID PROJECT				