

F.A.B. RTE.	SECTION	COUNTY	TOTAL SHEETS	SHEET NO.
3578	15 VB-1-F	COOK	62	1
FED. ROAD DIST. NO.		ILLINOIS	FED. AID PROJECT	
CONTRACT NO. 60H54				

STATE OF ILLINOIS
DEPARTMENT OF TRANSPORTATION
DIVISION OF HIGHWAYS

PROPOSED HIGHWAY PLANS

F.A.U. 3578 (SOUTHWEST HIGHWAY)
OVER B&O RAILROAD & STONY CREEK & AT RIDGELAND AVENUE
BEAM FABRICATION
SECTION 15 VB-1-F
PROJECT NO. BRM-3578(009)
COOK COUNTY
C-91-747-09

FOR INDEX OF SHEETS, SEE SHEET NO. 2
HIGHWAY CLASSIFICATION

MINOR ARTERIAL ROADWAY

DESIGN DESIGNATION

3440 (26) ARTERIAL 6.03 (PCC-20)

TRAFFIC DATA

SOUTHWEST HIGHWAY

103 ST. TO RIDGELAND AVE.

2020 ADT=34,000

POSTED SPEED LIMIT=65 km/H (40 MPH)

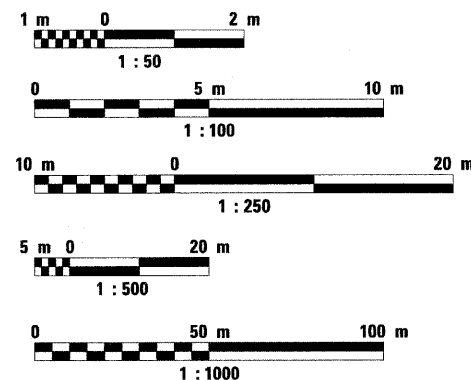
DESIGN SPEED LIMIT=70 km/H (45 MPH)

PROJECT DESCRIPTION

BEAM FABRICATION

**PROJECT LOCATED IN THE
VILLAGE OF CHICAGO RIDGE**

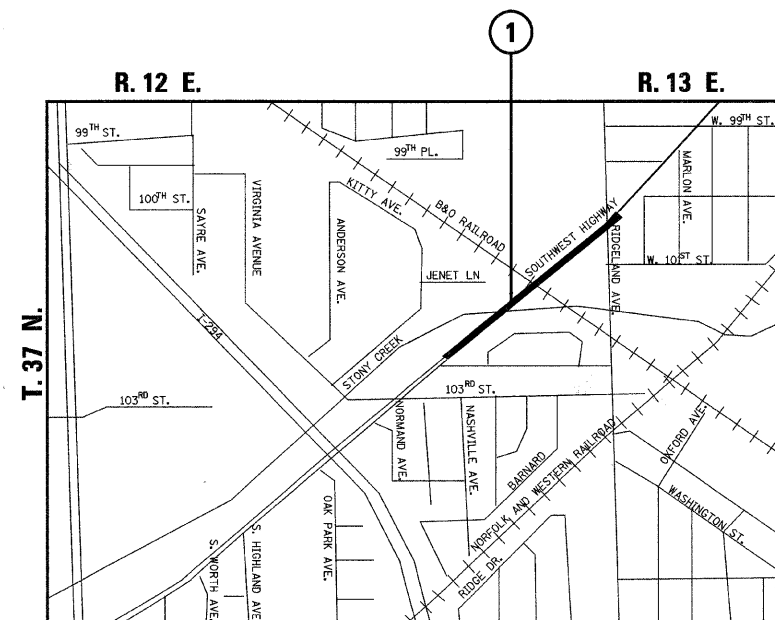
METRIC RATIOS



FULL SIZE PLANS HAVE BEEN PREPARED USING STANDARD ENGINEERING SCALES, REDUCED SIZED PLANS WILL NOT CONFORM TO STANDARD SCALES, IN MAKING MEASUREMENTS ON REDUCED PLANS, THE ABOVE SCALES MAY BE USED.

J.U.L.I.E.
JOINT UTILITY LOCATION INFORMATION FOR EXCAVATION
1-800-892-0123 OR 811

CONTRACT NO. 60H54

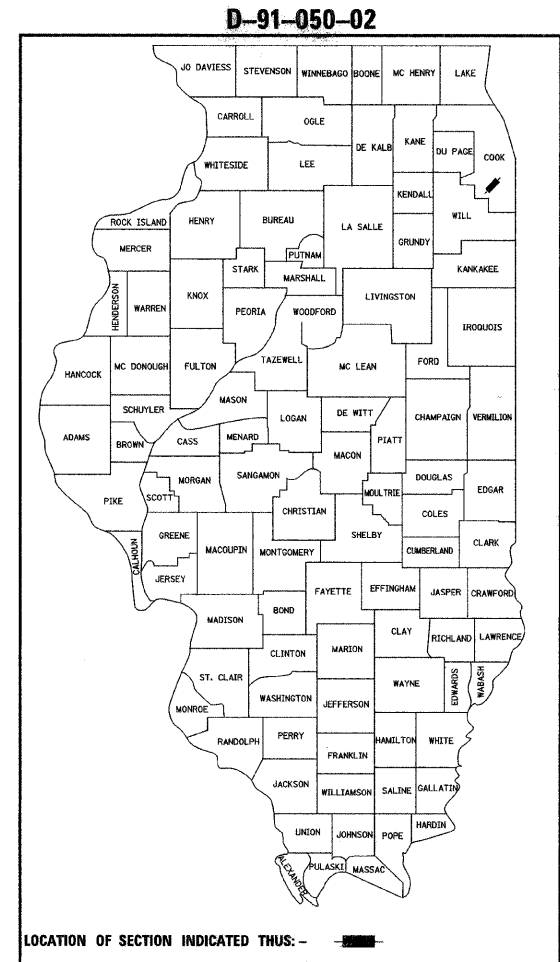


WORTH TOWNSHIP

LOCATION MAP

SCALE 1:15,000

GROSS LENGTH OF SN 016-2771 = 398 m = 0.398 km



**PROPOSED
BEAM FABRICATION**

**1 SOUTHWEST HIGHWAY OVER
B&O RAILROAD AND STONY
CREEK STRUCTURE REPLACEMENT
SN 016-2771 (EXISTING SN 016-0463)
STA. 4+524.129 TO STA. 4+923.711**



Paul M. Lopez, EXP. 11-30-10
PAUL M. LOPEZ, P.E., S.E.
 NO. 081-005231
 DATE: 5/22/2009

**STATE OF ILLINOIS
DEPARTMENT OF TRANSPORTATION
DIVISION OF HIGHWAYS**

SUBMITTED MAY 22 20 09

June Okin
 DEPUTY DIRECTOR OF HIGHWAYS, REGION ENGINEER

June 26, 20 09
Charles A. Ingersoll
 ENGINEER OF DESIGN AND ENVIRONMENT

June 26, 20 09
Christine M. Reed
 DIRECTOR, HIGHWAYS, CHIEF ENGINEER

PRINTED BY THE AUTHORITY OF THE STATE OF ILLINOIS

DISTRICT 1 - DESIGN / CONSULTANT SERVICES / RAJENDRA SHAH (847) 705-4555

PATRICK
ENGINEERING INC.
 LISLE, ILLINOIS