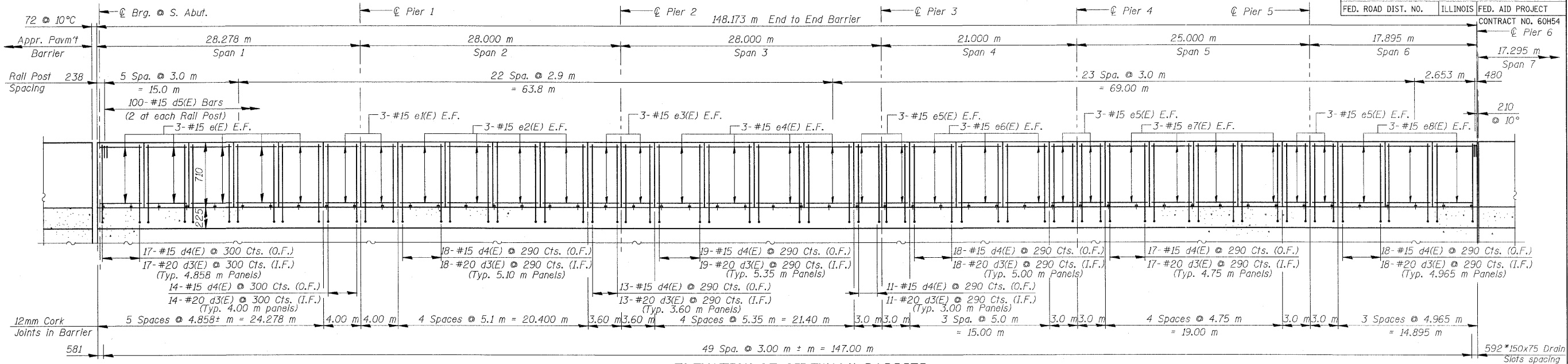


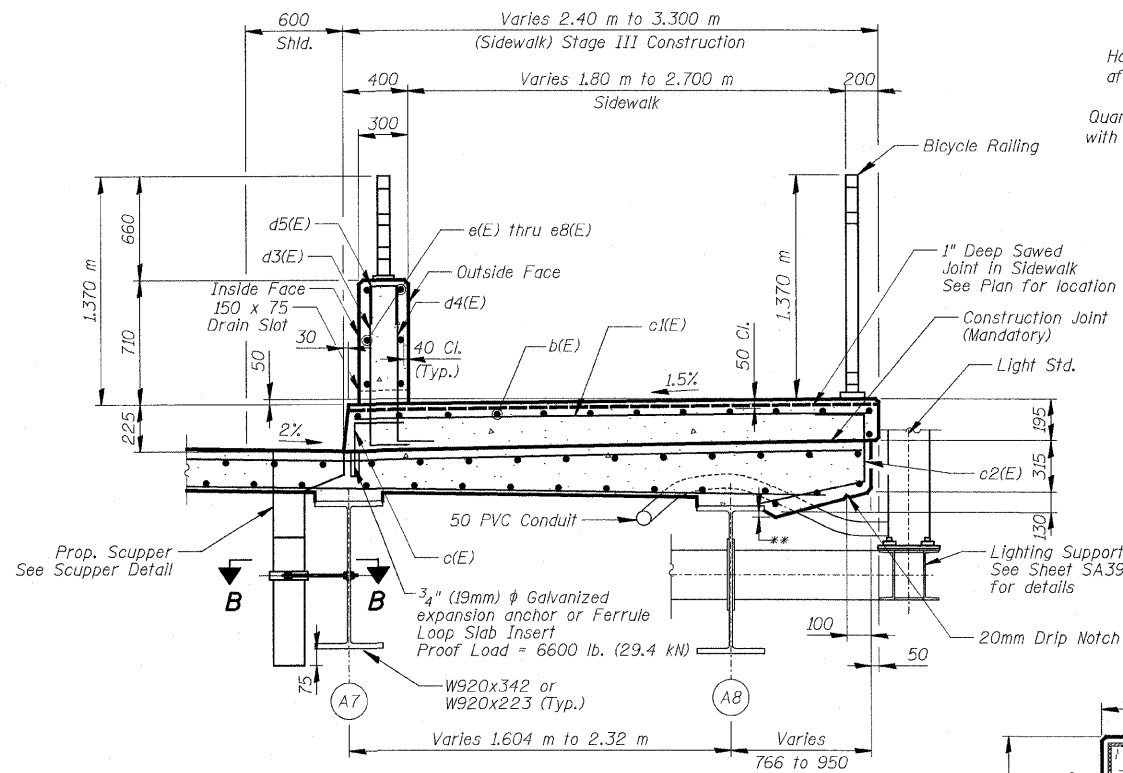
F.A.U. RTE.	SECTION	COUNTY	TOTAL SHEETS	SHEET NO.
3578	15 VB-1-F	COOK	62	18
STA.		TO STA.		
FED. ROAD DIST. NO.		ILLINOIS FED. AID PROJECT		
		CONTRACT NO. 60H54		



ELEVATION OF SIDEWALK BARRIER

Looking North-West

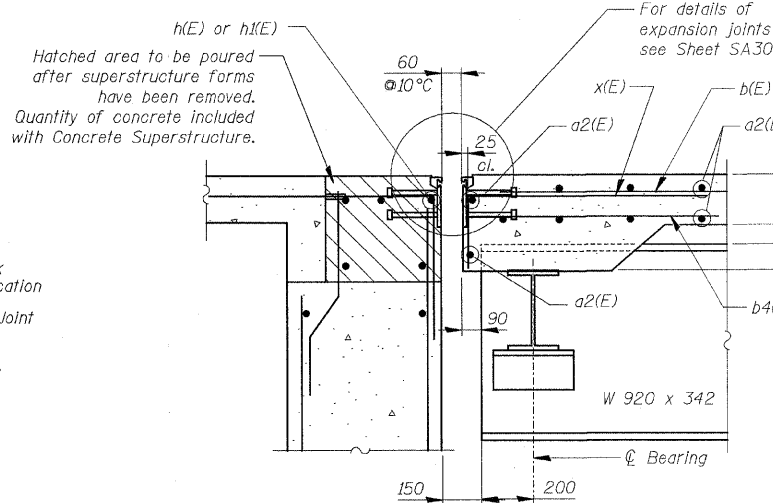
* Drain Slots shall omit the vertical reinforcement and shall be 50mm min. from the edges of joints.



SECTION THRU SIDEWALK

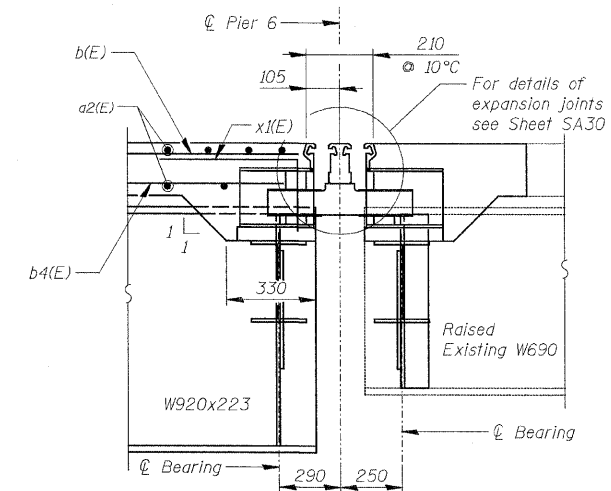
See Sheet SA21 for Section B-B and Scupper Drainage Details

**Varies 10 to 110



SECTION A-A

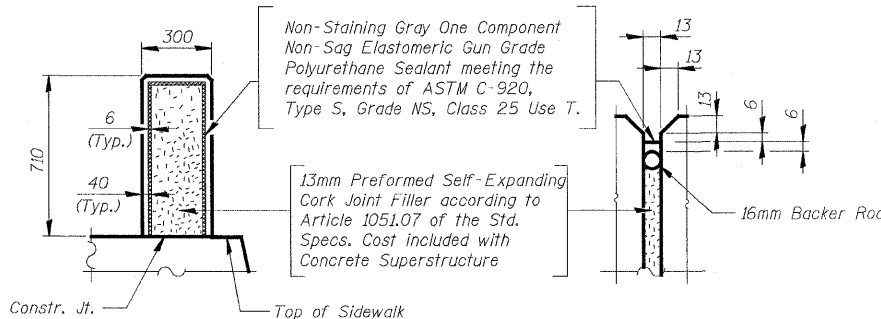
See Sheet SA19 for Section location



SECTION C-C

NOTES

1. Reinforcement bars designated (E) shall be Epoxy Coated.
2. Bars indicated thus 20 x 3 - #15 etc. indicates 20 lines of bars with 3 lengths per line.
3. All dimensions are in millimeters (mm) except as noted.
4. The cost of expansion anchors/inserts is included in the cost of Reinforcement Bars, Epoxy Coated.
5. In lieu of providing the d3(E) & d4(E) dowels bars as shown, the contractor, at his option and expense, can submit to the engineer for his review and approval an alternate detail to drill and grout the bars. No additional compensation will be allowed if the contractor elects to use the alternate detail.



BARRIER JOINT DETAILS

REVISIONS		ILLINOIS DEPARTMENT OF TRANSPORTATION SUPERSTRUCTURE DETAILS - UNIT I - A SOUTHWEST HIGHWAY OVER B&O RAILROAD AND STONY CREEK FAU 3578 SECTION 15 VB-1-F STRUCTURE NUMBER 016-2771 COOK COUNTY STATION 4+716.497 SCALE: NONE DRAWN BY: M. Tryon DATE: MAY 22, 2009 CHECKED BY: A. Yargiooglu
NAME	DATE	

FOR INFORMATION ONLY

jvermillion(rdwyl-lise) 5/29/2009 10:56:53 PM
 at:\cort\9556.ad\drawings\struc\fabr\location_plans\20_FAB_Deck_Details_UNIT I_A.dgn

