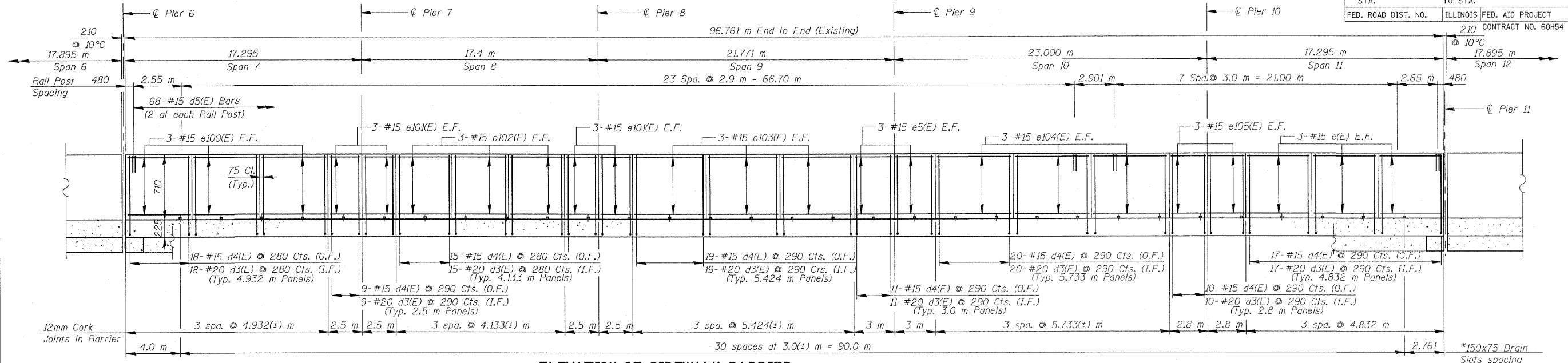
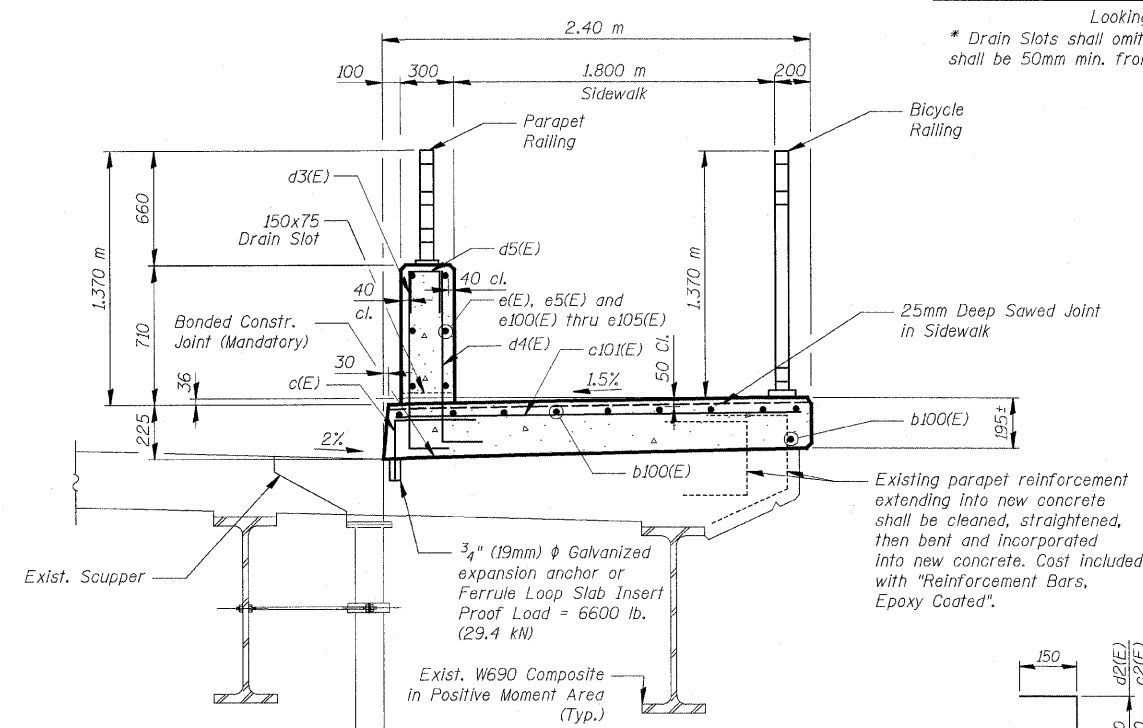


F.A.U. RTE.	SECTION	COUNTY	TOTAL SHEETS	SHEET NO.
3578	15 VB-1-F	COOK	62	21
STA.		TO STA.		
FED. ROAD DIST. NO.		ILLINOIS	FED. AID PROJECT	
		CONTRACT NO. 60H54		

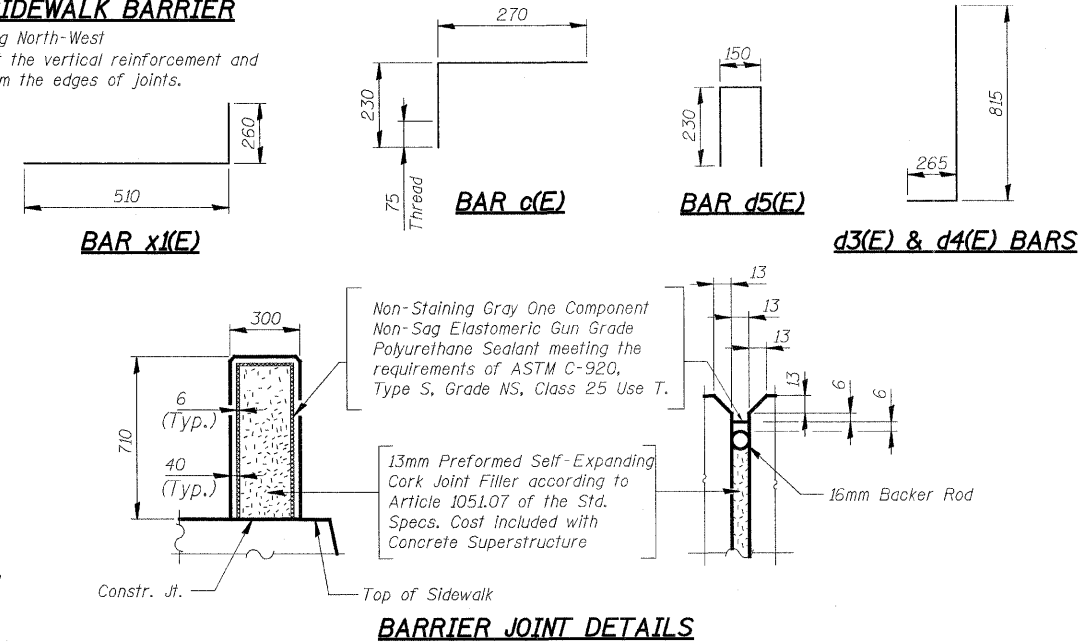


**ELEVATION OF SIDEWALK BARRIER**

Looking North-West  
\* Drain Slots shall omit the vertical reinforcement and shall be 50mm min. from the edges of joints.



**SECTION THRU SIDEWALK**  
Lighting Support omitted for clarity



**BARRIER JOINT DETAILS**

**NOTES**

- Reinforcement bars designated (E) shall be Epoxy Coated.
- Bars Indicated thus 20 x 3 - #15 etc. Indicates 20 lines of bars with 3 lengths per line.
- All dimensions are in millimeters (mm) except as noted.
- The cost of expansion anchors/inserts is included in the cost of Reinforcement Bars, Epoxy Coated.
- In lieu of providing the d3(E) & d4(E) dowels bars as shown, the contractor, at his option and expense, can submit to the engineer for his review and approval an alternate detail to drill and grout the bars. No additional compensation will be allowed if the contractor elects to use the alternate detail.

**SUPERSTRUCTURE - UNIT II**  
**BILL OF MATERIAL**

BAR NO.	SIZE	LENGTH (m)	SHAPE
a4(E)	4 # 20	1,200	—
a100(E)	1094 # 15	0.770	—
a101(E)	12 # 15	8,520	—
a102(E)	24 # 15	5,180	—
b100(E)	165 # 15	9,270	—
b101(E)	48 # 15	8,540	—
b102(E)	8 # 20	8,800	—
b103(E)	4 # 20	11,000	—
b104(E)	4 # 20	10,000	—
c(E)	324 # 15	0,500	—
c2(E)	6 # 15	1,170	—
c101(E)	324 # 15	2,300	—
d(E)	12 # 15	0,910	—
d1(E)	6 # 15	0,800	—
d2(E)	6 # 15	1,140	—
d3(E)	345 # 20	1,080	—
d4(E)	345 # 15	1,080	—
d5(E)	68 # 15	0,610	—
e(E)	18 # 15	4,710	—
e5(E)	12 # 15	2,850	—
e100(E)	18 # 15	4,810	—
e101(E)	24 # 15	2,350	—
e102(E)	18 # 15	3,980	—
e103(E)	18 # 15	5,270	—
e104(E)	18 # 15	5,580	—
e105(E)	12 # 15	2,650	—
x(E)	114 # 15	0,770	—
Concrete Superstructure			m <sup>3</sup> 92.5
Bridge Deck Grooving			m <sup>2</sup> 97
Protective Coat			m <sup>2</sup> 461
Reinforcement Bars, Epoxy Coated			kg 9,020
Bar Splicers			Each 12
Mechanical Splicers			Each 1,094

REVISIONS	NAME	DATE

**ILLINOIS DEPARTMENT OF TRANSPORTATION**  
**SUPERSTRUCTURE DETAILS - UNIT II**  
**SOUTHWEST HIGHWAY OVER**  
**B&O RAILROAD AND STONY CREEK**  
FAU 3578 SECTION 15 VB-1-F  
STRUCTURE NUMBER 016-2171  
COOK COUNTY STATION 4+716.497  
SCALE: NONE DRAWN BY: M. Tryon  
DATE: MAY 22, 2009 CHECKED BY: A. Yargiooglu

FOR INFORMATION ONLY

J:\vermillion(Rdwy\_Lise)\5/29/2009 5:29/2009 q:\idof\9556\_a0\drawings\struct\Fabrication\plans\23\_FAB\_Deck\_Details\_UNIT II.dgn  
 Patrick Engineering Inc. Lisle, Illinois

