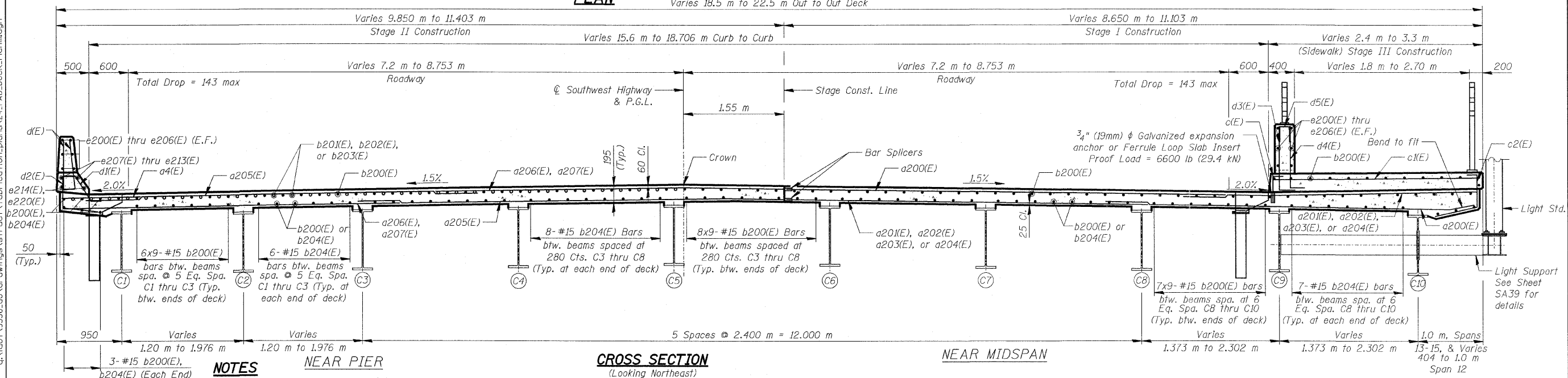
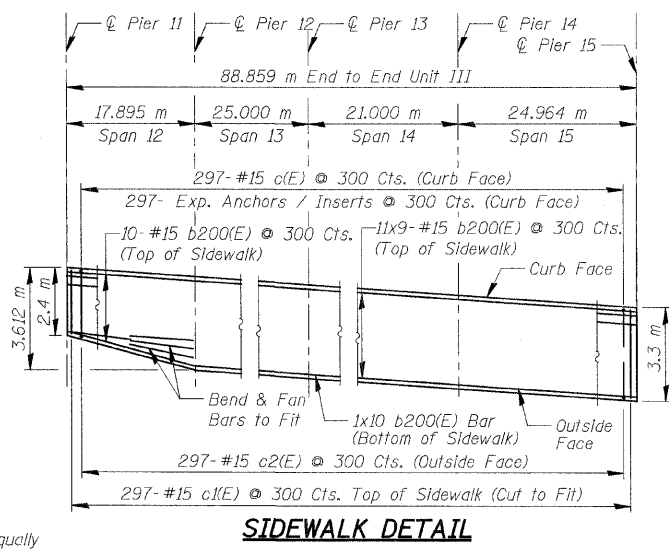
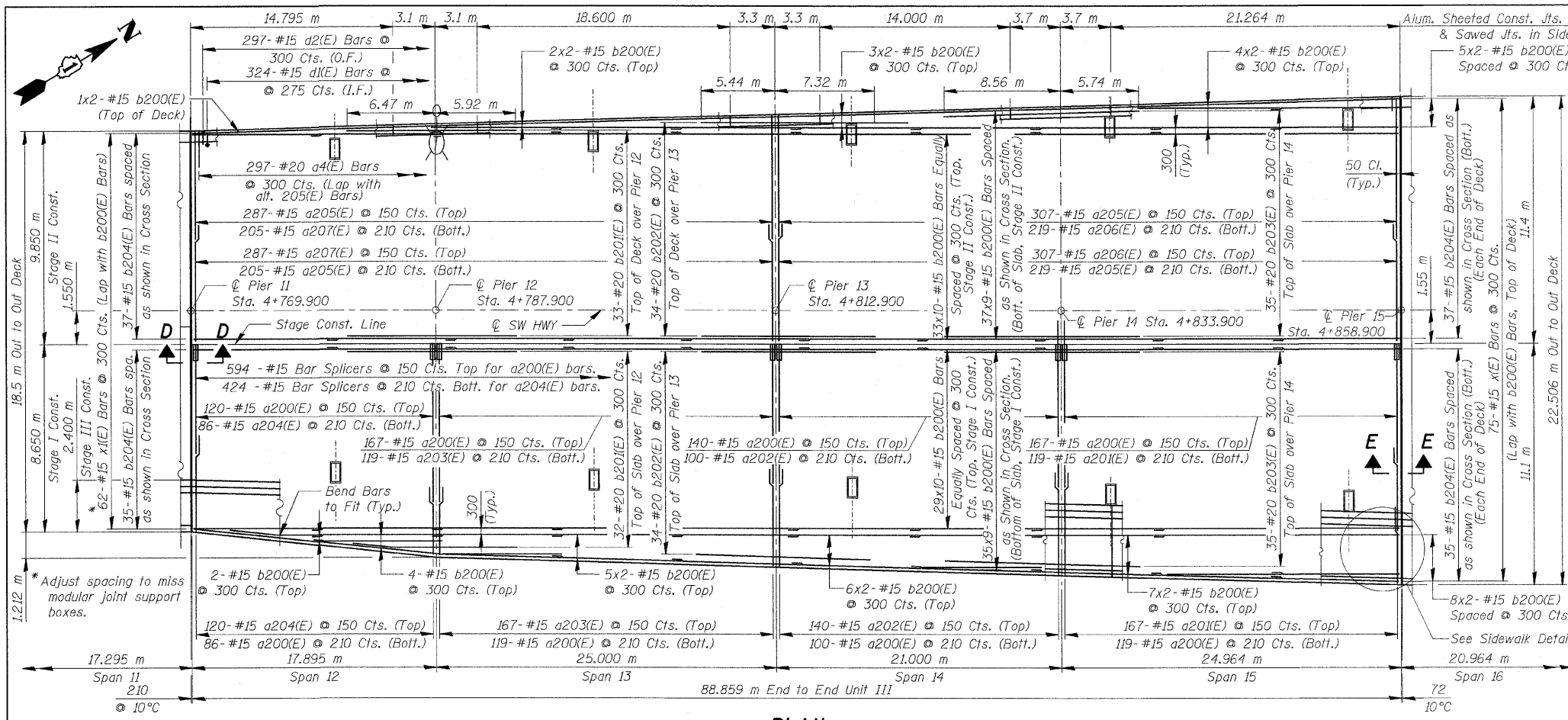


F.A.U. RTE.	SECTION	COUNTY	TOTAL SHEETS	SHEET NO.
3578	15 VB-1-F	COOK	62	23
STA.	TO STA.			
FED. ROAD DIST. NO.	ILLINOIS FED. AID PROJECT		CONTRACT NO. 60H54	



- NOTES**
1. Reinforcement Bars designated (E) shall be epoxy coated.
 2. Bars indicated 20 x 3 - #15 etc. indicates 20 lines of bars with 3 lengths per line.
 3. All edges shall have standard 19 mm chamfer except as noted.
 4. Work this Sheet with Sheet SA25 and SA26. See Sheet SA25 for Bicycle Railing Details and SA26 for Parapet Details.
 5. All Dimensions are in millimeters (mm) except as noted.
 6. Place bars d1(E) and d2(E) to miss the aluminum sheeted joint locations in parapets

TYP. LAP SPLICE	
BAR SIZE	MIN. LAP
#15	510
#25	1,06 m

REVISIONS	
NAME	DATE

ILLINOIS DEPARTMENT OF TRANSPORTATION
SUPERSTRUCTURE - UNIT III
SOUTHWEST HIGHWAY OVER
B&O RAILROAD AND STONY CREEK
 FAU 3578 SECTION 15 VB-1-F
 STRUCTURE NUMBER 016-2771
 COOK COUNTY STATION 4+716.497
 SCALE: NONE DRAWN BY: M. Tryon
 DATE: MAY 22, 2009 CHECKED BY: A. Yargolouglu

FOR INFORMATION ONLY

a:\idof\9556_a0\drawings\struc\1\Fabrication\plans\24_FAB_Deck_Plan1.dgn
 5/29/2009 10:17:22 PM
 jvermillion(rdwj.Lisie)

